

U.S. PUBLIC LAND SURVEY MONUMENT RECORD

Section 4, Town 3 North Range 3 West, Town of Potosi, Grant County, Wisconsin

CERTIFICATE

I, Larry L. Austin, do hereby certify that the corner location on this record was determined by me and/or under my direct supervision and that this U.S. public land survey monument record is correct and complete to the best of my knowledge and belief.

Larry L. Austin
Larry L. Austin, S-1903

2.18.11
date



● = CORNER LOCATION

HISTORY OF CORNER

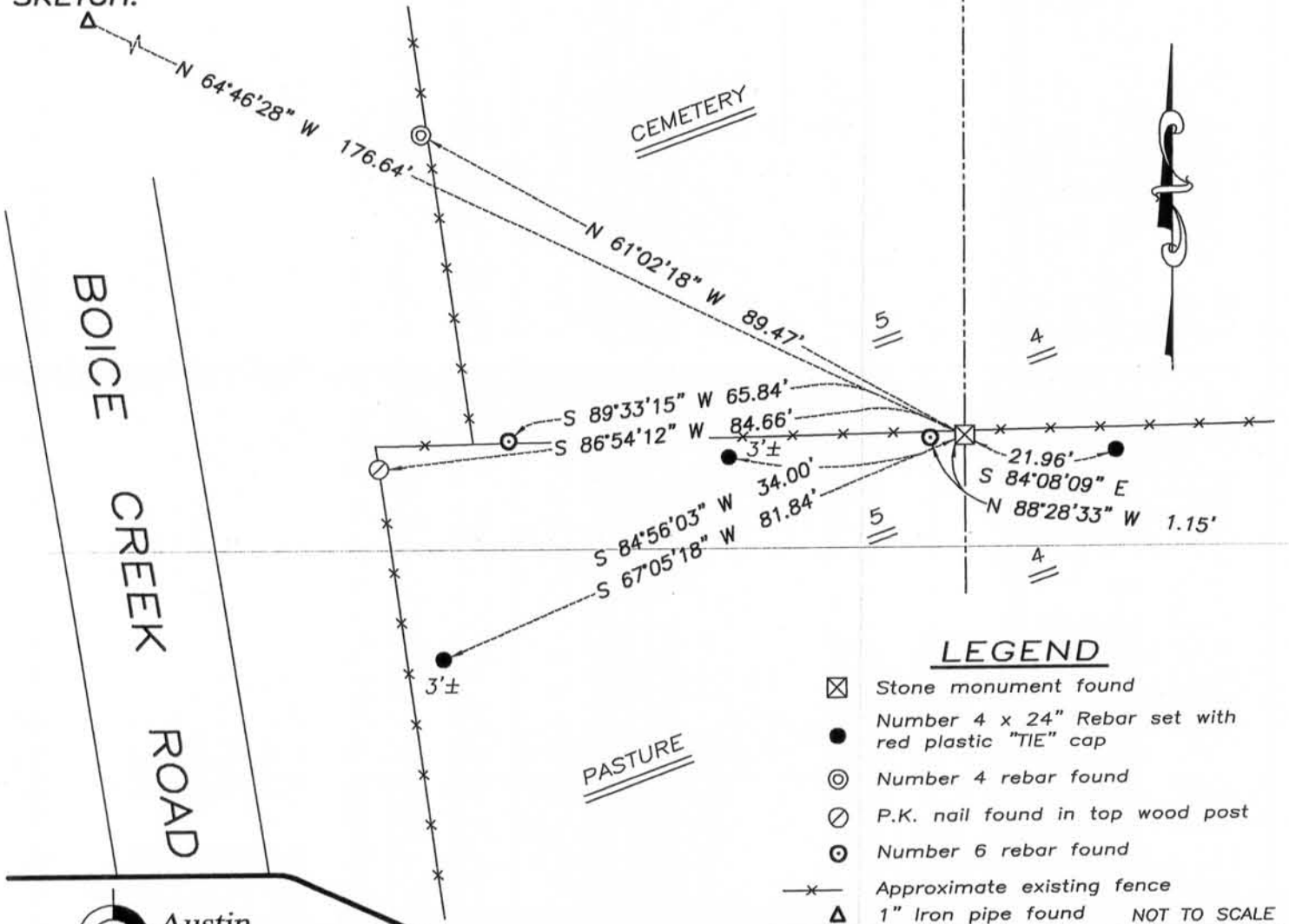
Corner was originally set in 1833 by Robert Clark. In February of 1998 I set the corner. In August of 1998, Thomas Buck set the corner. No other record of the corner was found.

CORNER EVIDENCE FOUND

I revisited the corner and checked the location of the monuments. I found a Stone monument near Buck's location and accepted it after an EDM & GPS traverse of the area.

DESCRIPTION OF CORNER AND WITNESS MONUMENTS, references and accessories used to perpetuate the original or re-established location of this corner. Witnesses to monument location Bobby Sedgwick & Brad Digman & Shelby Blindert

SKETCH:



Austin Engineering LLC
austinengineeringllc.com
4211 HWY 81 E, LANCASTER, WI 53813
PHONE: 608-723-6363 FAX: 608-723-6702

JOB NUMBER 10S036-PIERCE
FIELDBOOK: TDSR, 2911
G:\T3NR3W\T3NR3W
H:\TIE\T3NR3W\16

DRAWN BY: SW AUSTIN
APPROVED: LL AUSTIN

FEB 23 2011

REC'D SEP 4 1998

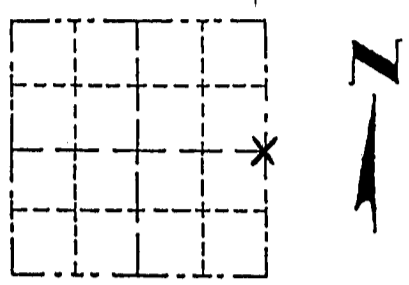
Survey Monument Record

TYPE OF MONUMENT 3/4" Iron Rod
 STATE PLANE COORDINATES: N _____
 E _____
 ELEVATION — M.S.L. DATUM: _____
 THETA ANGLE: _____
 FIELD BOOK: _____
 PAGE _____

CORNER NO. _____
 SECTION 5
 TOWN 3 NORTH
 RANGE 3 WEST

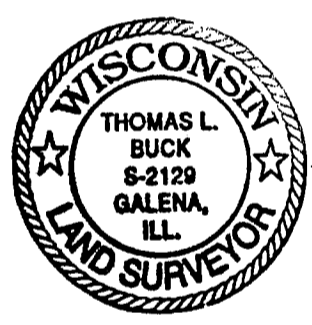
BASIS FOR MONUMENT LOCATION

(Use reverse side if necessary)
 Show info such as: History of corner, with reference to Vol. and pg., dates, surveyor; exact description of monument replaced; if location computed, by taped or EDM traverse; landowner, remarks, etc.



LOCATION
 (Indicated by "X")
 FOUND PERPETUATED LOCATION
 OBLITERATED EVIDENCE LOCATION
 LOST CORNER (RESTORED BY PROPORTIONATE METHODS)

I FOUND NO EVIDENCE OF THIS CORNER. THE CORNER WAS SET BY PROPORTIONATE MEASUREMENT ACROSS THE EAST-WEST ONE QUARTER LINE, LOCATING 40 CORNERS USING AN EDM. TRAVERSE AND G.P.S. OBSERVATION OF THE ENTIRE SECTION.

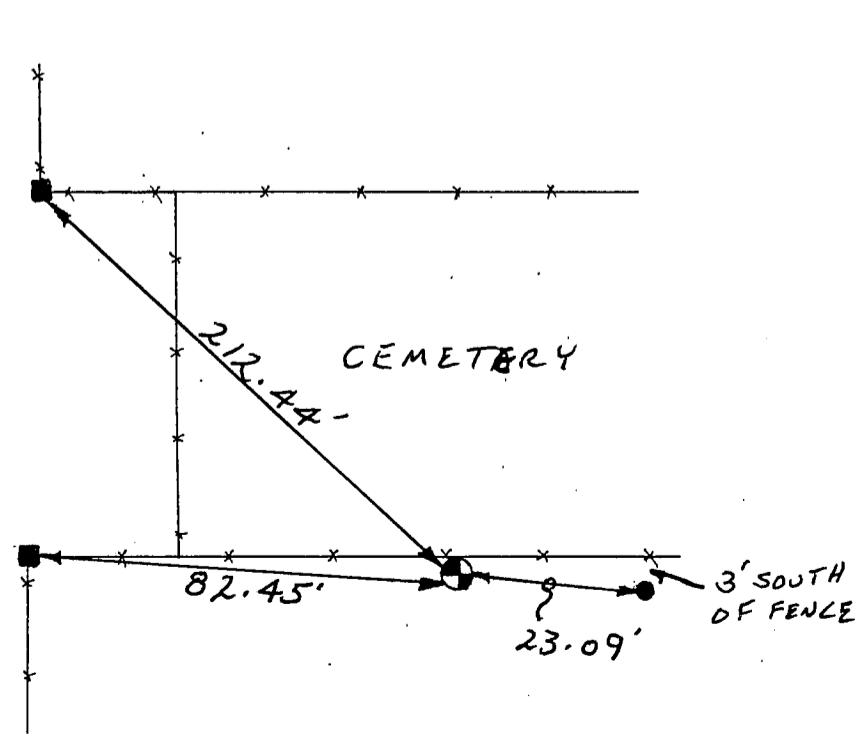


CERTIFIED CORRECT TO THE BEST OF MY KNOWLEDGE AND BELIEF

Thomas Buck
 Registered Land Surveyor
 DATE: 8/25/98

TIE SKETCH

Show at least three (3) ties and monument



LEGEND

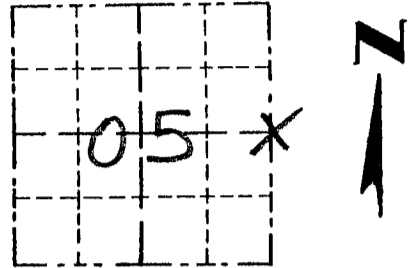
- = P.K. NAIL w/SHINER TOP OF POST
- = 3/4" x 24" IRON ROD
- = 1/2" IRON ROD
- *-* = EXISTING FENCE

Survey Monument Record

TYPE OF MONUMENT County Monument
SET (3/4" x 24" IRON BAR W/ CAP)

CORNER NO. 16
 SECTION 05
 TOWN 3N
 RANGE 3W

FIELD BOOK: 96-01
 PAGE _____



LOCATION
 (Indicated by "X")

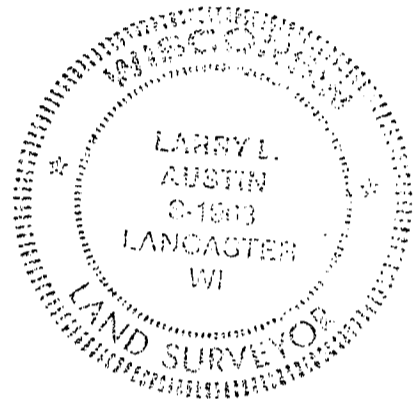
BASIS FOR MONUMENT LOCATION

(Use reverse side if necessary)

Show info such as: History of corner, with reference to Vol. and pg., dates, surveyor; exact description of monument replaced; if location computed, by taped or EDM traverse; landowner, remarks, etc.

SEAL:

ORIGINAL CORNER SET IN 1833 BY R. CLARK, IN 1892 C. SAMPSON FOUND REMAINS OF BOTH BEARING TREES, I ACCEPTED OCCUPATION FOR NORTH-SOUTH LOCATION EAST-WEST LOCATION ESTABLISHED BY BEING ONLINE BETWEEN THE NE CORNER AND SE CORNER; VERIFIED BY EDM TRAVERSE OF AREA.



CERTIFIED CORRECT

Larry L. Austin
 Registered Land Surveyor

DATE: 2/18/98

TIE SKETCH

Show at least three (3) ties and monument

LEGEND

- 3/4" x 24" IRON BAR SET W/ CAP.
- 1/2" x 15" IRON BAR SET
- 1" x 15" IRON PIPE SET
- EXISTING FENCE

