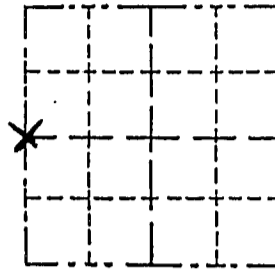


Survey Monument Record

TYPE OF MONUMENT 3/4" x 24" Iron Rod
 STATE PLANE COORDINATES: N _____
 E _____
 ELEVATION — M.S.L. DATUM: _____
 THETA ANGLE: _____
 FIELD BOOK: _____
 PAGE _____

CORNER NO. _____
 SECTION 5
 TOWN 3 NORTH
 RANGE 3 WEST



LOCATION
 (Indicated by "X")

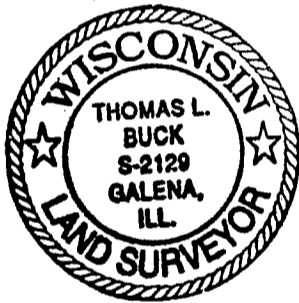
- FOUND PERPETUATED LOCATION
- OBLITERATED EVIDENCE LOCATION
- LOST CORNER (RESTORED BY PROPORTIONATE METHODS)

BASIS FOR MONUMENT LOCATION

(Use reverse side if necessary)

Show info such as: History of corner, with reference to Vol. and pg., dates, surveyor; exact description of monument replaced; if location computed, by taped or EDM traverse; landowner, remarks, etc.

I FOUND NO EVIDENCE OF THIS CORNER. THE CORNER WAS SET BY PROPORTIONATE MEASUREMENT ACROSS THE EAST-WEST ONE QUARTER LINE, LOCATING 40 CORNERS USING E.D.M. TRAVERSE AND G.P.S. OBSERVATION.



CERTIFIED CORRECT TO THE BEST OF MY KNOWLEDGE AND BELIEF

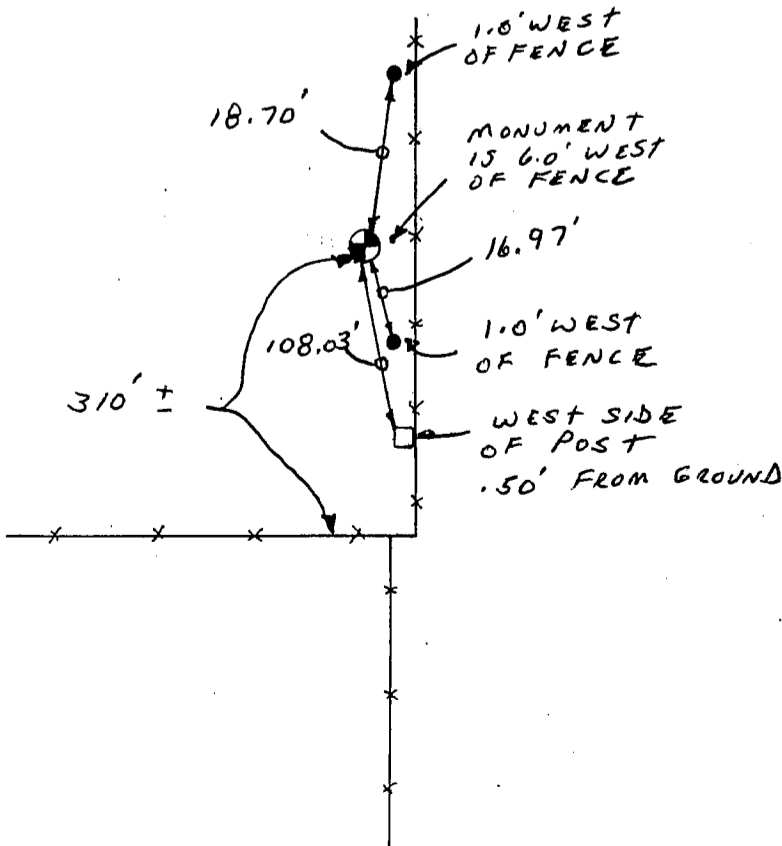
Thomas L. Buck

Registered Land Surveyor

DATE: 8/25/98

TIE SKETCH

Show at least three (3) ties and monument



NO SCALE

LEGEND

- ⊙ = 3/4" x 24" IRON ROD
- = 1/2" IRON ROD
- = P.K. NAIL w/SHINER

-- = EXISTING FENCE