

GRANT COUNTY U.S. PUBLIC LAND SURVEY MONUMENT RECORD

INSTRUCTIONS: THIS RECORD SHALL SHOW THE LOCATION OF THE CORNER AND SHALL INCLUDE ALL OF THE FOLLOWING ELEMENTS (A THROUGH I).

(A) IDENTIFY THE CORNER AS REFERENCED TO THE U.S. PUBLIC LAND SURVEY SYSTEM

■ = CORNER MONUMENT RESTORED

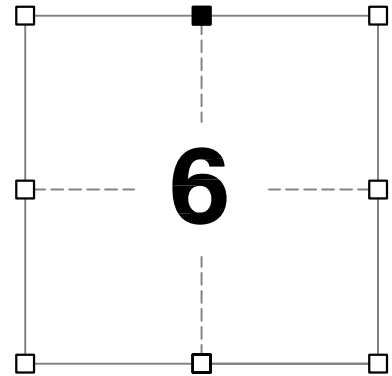
WITNESSES TO CORNER LOCATION:
JAY P. ADAMS

GEOGRAPHIC COORDINATES,
NAD 83 (2011) ADJUSTMENT:

LATITUDE: 42° 46' 13.00161"
LONGITUDE: 90° 46' 15.67383"

WISCONSIN COORDINATE REFERENCE SYSTEM (WISCRS),
GRANT COUNTY, NAD 83 (2011) ADJUSTMENT:

NORTHING: 495,324.63
EASTING: 802,781.75



SECTION 6
TOWNSHIP 3 NORTH, RANGE 3 WEST
TOWN OF POTOSI

(B) DESCRIBE ANY RECORD EVIDENCE, MONUMENT EVIDENCE, OCCUPATIONAL EVIDENCE, TESTIMONIAL EVIDENCE OR ANY OTHER MATERIAL EVIDENCE YOU CONSIDERED, AND WHETHER THE MONUMENT WAS FOUND OR PLACED.

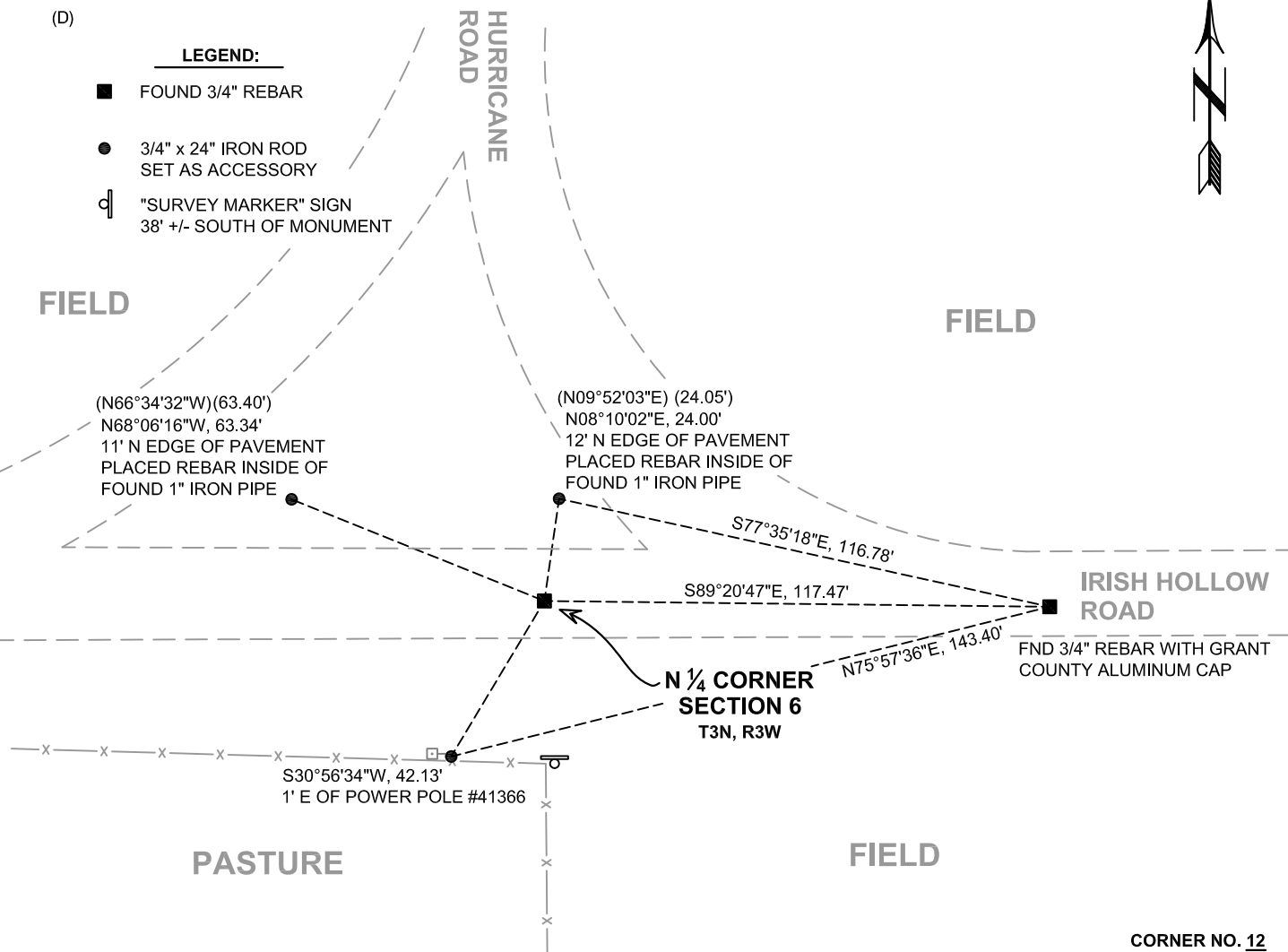
I COULD FIND NO MONUMENTS OR BEARING TREES FROM THE COUNTY SURVEYORS' RESURVEYS. I RECOVERED THE #6 REBAR WITH GRANT COUNTY ALUMINUM CAP REFERENCED BY AUSTIN. HOWEVER, AS THIS CORNER WAS NOT ESTABLISHED BY THE ORIGINAL GOVERNMENT SURVEY, THE FIRST SURVEYOR TO ESTABLISH THIS CORNER IS TO BE HELD "WITHOUT ERROR" DESPITE THE METHOD UTILIZED. FOR THIS REASON, I HAVE ACCEPTED THE LOCATION AS ESTABLISHED BY JOEL BARBER. SAID LOCATION BEING THE SAME AS THE SOUTH QUARTER CORNER OF SECTION 31, TOWNSHIP 4 NORTH, RANGE 3 WEST. THIS LOCATION IS SUPPORTED BY OCCUPATIONAL EVIDENCE THROUGHOUT SECTION 6. THE 3/4" REBAR AT THE SOUTH QUARTER CORNER OF SECTION 31 WAS LEFT IN PLACE BECAUSE OF EXCEPTIONAL STABILITY.

(C) IN THE PLAN VIEW DRAWING BELOW, PROVIDE REFERENCE TIES TO AT LEAST 4 WITNESS MONUMENTS. WITNESS MONUMENTS SHALL BE MADE OF CONCRETE, NATURAL STONE, IRON, BEARING TREES OR ANY OTHER EQUALLY DURABLE MATERIAL. DEPICT THE RELEVANT MONUMENTS AND REFERENCE TIES WITH SUFFICIENT DETAIL TO ENABLE ACCURATE RELOCATION OF THE CORNER IF THE CORNER MONUMENT IS DISTURBED.

(D)

LEGEND:

- FOUND 3/4" REBAR
- 3/4" x 24" IRON ROD SET AS ACCESSORY
- "SURVEY MARKER" SIGN 38' +/- SOUTH OF MONUMENT



**Remonumentation
33012**

- (E) DESCRIBE ANY MATERIAL DISCREPANCY BETWEEN THE LOCATION OF THE CORNER AS RESTORED OR REESTABLISHED AND THE LOCATION OF THAT CORNER AS PREVIOUSLY RESTORED OR REESTABLISHED BY DISTANCE AND DIRECTION. SHOW THE DISCREPANCY ON THE PLAN VIEW DRAWING UNDER (D), ABOVE. SHOW THE DISTANCES BETWEEN THE CORNER AS PREVIOUSLY RESTORED OR REESTABLISHED AND (1) THE CORNER AS RESTORED OR REESTABLISHED, AND (2) TO AT LEAST 2 OF THE WITNESS MONUMENTS SHOWN ON THE DRAWING IN (D) ABOVE.

THIS CORNER WAS REESTABLISHED IN A TIE SHEET BY LARRY AUSTIN DATED 16 MARCH 2005 AT A LOCATION REPORTED BY CHARLES SAMPSON IN 1899. SAMPSON REFUTED A LOCATION FOR THE CORNER DETERMINED BY JOEL BARBER IN 1880.

- (F) WAS THE CORNER RESTORED THROUGH ACCEPTANCE OF (1) AN OBLITERATED EVIDENCE LOCATION, OR (2) A FOUND PERPETUATED LOCATION?

(2) A FOUND PERPETUATED LOCATION.

- (G&H) WAS THE CORNER REESTABLISHED THROUGH LOST CORNER PROPORTIONATE METHODS? IF SO, SHOW THE METHOD, INCLUDING THE DIRECTIONS AND DISTANCES TO OTHER PUBLIC LAND SURVEY CORNERS USED AS EVIDENCE OR USED FOR PROPORTIONING IN DETERMINING THE CORNER LOCATION.

N/A

CORNER HISTORY

THIS CORNER WAS NOT ESTABLISHED BY THE ORIGINAL GOVERNMENT SURVEY.

IN A SURVEY DATED 26 JANUARY 1880, JOEL BARBER RECOVERS THE SOUTH QUARTER CORNER OF SECTION 31, TOWNSHIP 4 NORTH, RANGE 3 WEST AND BELIEVES IT IS A COMMON CORNER TO THE NORTH QUARTER CORNER OF SECTION 6, TOWNSHIP 3 NORTH, RANGE 3 WEST.

IN A SURVEY DATED 15 DECEMBER 1899, CHARLES SAMPSON REFUTED THE COMMON CORNER BY SAMPSON AND SET A POST 1.78 CHAINS EAST OF THE SOUTH CORNER OF SAID SECTION 31.

IN A TIE SHEET DATED 16 MARCH 2005, LARRY AUSTIN REPORTS SETTING A 3/4" x 24" IRON BAR WITH GRANT COUNTY ALUMINUM CAP AT THE "CORRECT" OFFSET DISTANCE FROM SOUTH QUARTER CORNER OF 31.

- (I) I, JAY P. ADAMS, P.L.S. - 2879, CERTIFY THAT THE CORNER LOCATION SHOWN ON THIS RECORD WAS DETERMINED BY ME OR UNDER MY DIRECTION AND CONTROL AND THAT THIS U.S. PUBLIC LAND SURVEY MONUMENT RECORD IS CORRECT AND COMPLETE TO THE BEST OF MY KNOWLEDGE AND BELIEF.

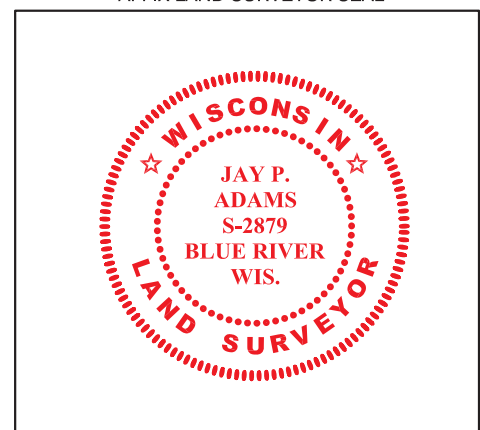


SIGNATURE

20 FEBRUARY 2018

DATE

AFFIX LAND SURVEYOR SEAL



U.S. PUBLIC LAND SURVEY MONUMENT RECORD – GRANT COUNTY, WI

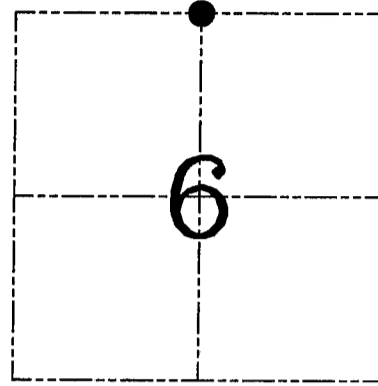
Section 6, Town 3 North Range 3 West, Town of Potosi

CERTIFICATE

I, Larry L. Austin, do hereby certify that the corner location on this record was determined by me and/or under my direct supervision and that this U.S. public land survey monument record is correct and complete to the best of my knowledge and belief.

Dated this 16th day of March, 2005

Larry L. Austin
Larry L. Austin S-1903



● = CORNER LOCATION

HISTORY OF CORNER ESTABLISHMENT

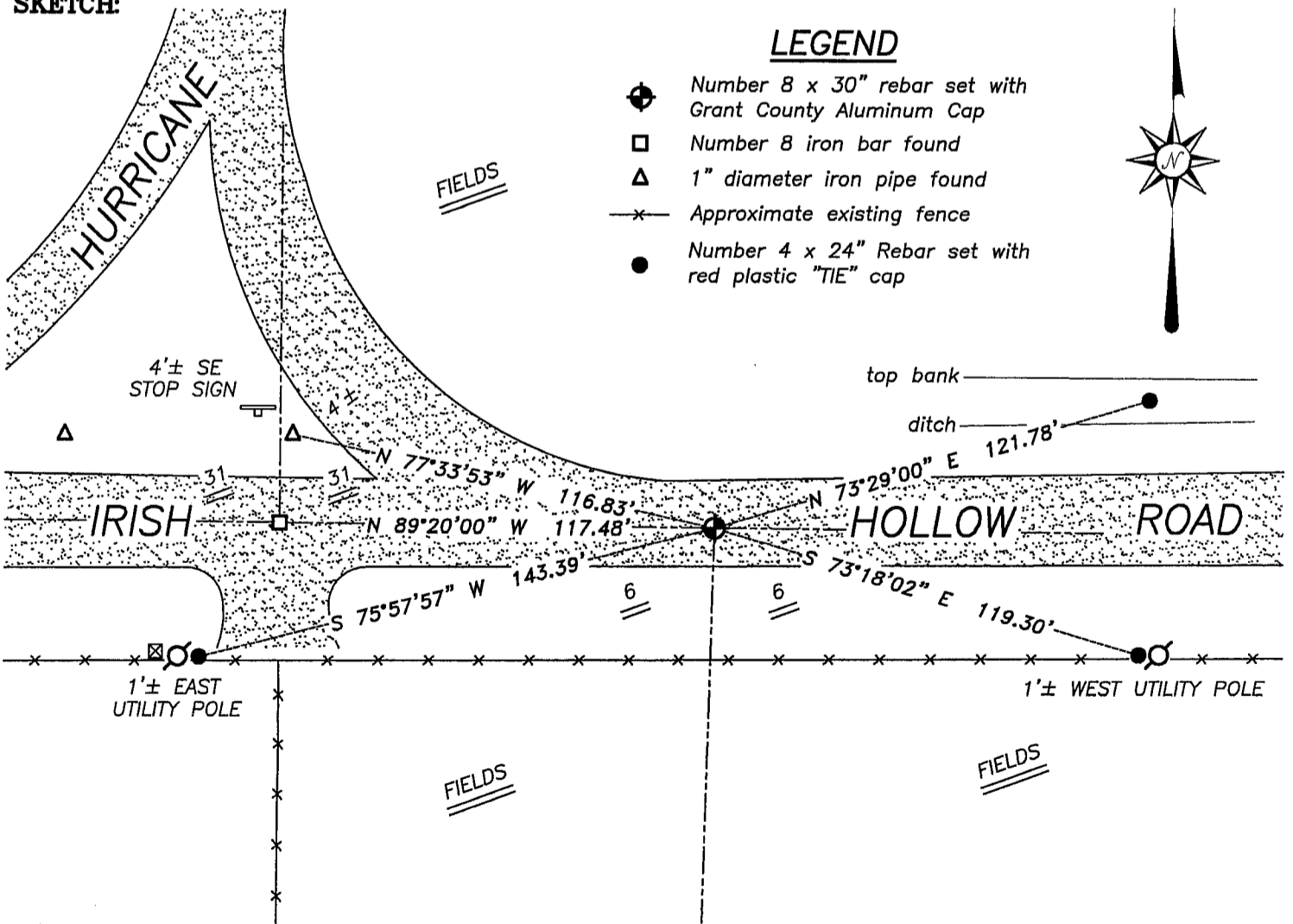
Corner was never originally set. In 1880 Barber showed the corner on a plat. In 1899 Sampson drove a stake at this corner. No other record of the corner was found.

DESCRIPTION OF CORNER EVIDENCE FOUND

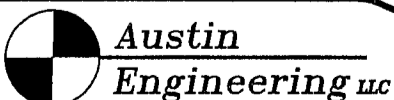
I set the monument at the correct offset from the existing South 1/4 of Section 31, T4N R3W. Verified this location using EDM & GPS methods.

DESCRIPTION OF CORNER AND WITNESS MONUMENTS, references and accessories used to perpetuate the original or re-established location of this corner. Witnesses to corner location Bobby Sedgwick & Shane Austin & Brad Digman

SKETCH:



SKETCH NOT TO SCALE



4211 HWY 81 E, LANCASTER, WI 53813
PHONE 608-723-6363 FAX 608-723-6702

JOB NUMBER 05S022
FIELDBOOK: TDSR, 2517
G:\T3NR3W\T3NR3W
H:\TIE\T3NR3W\12

DRAWN BY: SW AUSTIN
APPROVED: LL AUSTIN