

REMON
33010

GRANT COUNTY U.S. PUBLIC LAND SURVEY MONUMENT RECORD

INSTRUCTIONS: THIS RECORD SHALL SHOW THE LOCATION OF THE CORNER AND SHALL INCLUDE ALL OF THE FOLLOWING ELEMENTS (A THROUGH I).

- (A) IDENTIFY THE CORNER AS REFERENCED TO THE U.S. PUBLIC LAND SURVEY SYSTEM

■ = CORNER MONUMENT RESTORED

WITNESSES TO CORNER LOCATION:

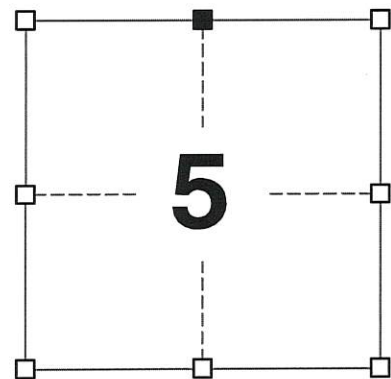
JAY P. ADAMS
STEVEN A. ALT

GEOGRAPHIC COORDINATES,
NAD 83 (2011) ADJUSTMENT:

LATITUDE: 42° 46' 12.44701"
LONGITUDE: 90° 45' 02.97009"

WISCONSIN COORDINATE REFERENCE SYSTEM (WISCRS),
GRANT COUNTY, NAD 83 (2011) ADJUSTMENT:

NORTHING: 495,270.99
EASTING: 808,204.80



SECTION 5
TOWNSHIP 3 NORTH, RANGE 3 WEST
TOWN OF POTOSI

- (B) DESCRIBE ANY RECORD EVIDENCE, MONUMENT EVIDENCE, OCCUPATIONAL EVIDENCE, TESTIMONIAL EVIDENCE OR ANY OTHER MATERIAL EVIDENCE YOU CONSIDERED, AND WHETHER THE MONUMENT WAS FOUND OR PLACED.

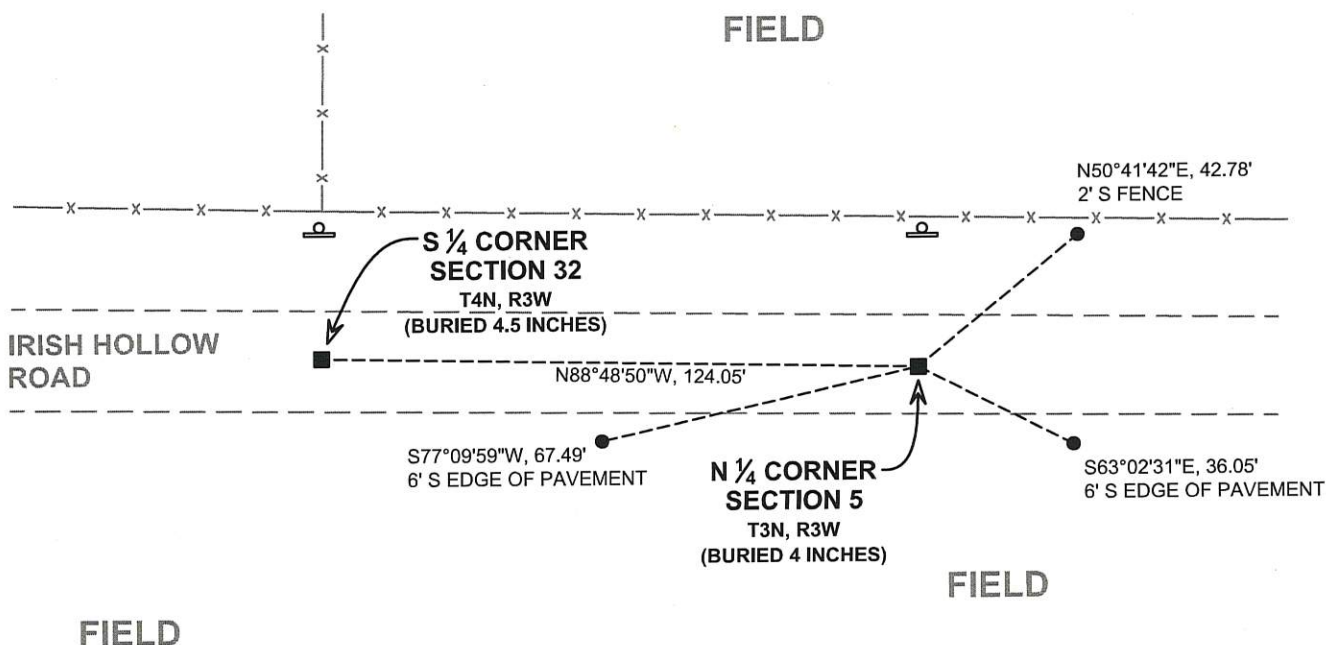
I COULD FIND NO MONUMENTS OR BEARING TREES FROM THE HISTORIC COUNTY SURVEYOR'S RESURVEYS. I RECOVERED THE 3/4" IRON ROD WITH ALUMINUM CAP REFERENCED IN THE TIE SHEET BY AUSTIN BURIED 4 INCHES UNDER THE ROADWAY SURFACE. THIS LOCATION WAS ACCEPTED AS THE BEST AVAILABLE EVIDENCE OF THE CORNER AND THE MONUMENT WAS LEFT IN PLACE BECAUSE OF EXCEPTIONAL STABILITY.

- (C) IN THE PLAN VIEW DRAWING BELOW, PROVIDE REFERENCE TIES TO AT LEAST 4 WITNESS MONUMENTS. WITNESS MONUMENTS SHALL BE MADE OF CONCRETE, NATURAL STONE, IRON, BEARING TREES OR ANY OTHER EQUALLY DURABLE MATERIAL. DEPICT THE RELEVANT MONUMENTS AND REFERENCE TIES WITH SUFFICIENT DETAIL TO ENABLE ACCURATE RELOCATION OF THE CORNER IF THE CORNER MONUMENT IS DISTURBED.

- (D)

LEGEND:

- FOUND 3/4" REBAR WITH GRANT COUNTY ALUMINUM CAP
- 3/4" x 24" IRON ROD SET AS ACCESSORY
- ⊓ "SURVEY MARKER" SIGN 29' +/- NORTH OF MONUMENT



(E) DESCRIBE ANY MATERIAL DISCREPANCY BETWEEN THE LOCATION OF THE CORNER AS RESTORED OR REESTABLISHED AND THE LOCATION OF THAT CORNER AS PREVIOUSLY RESTORED OR REESTABLISHED BY DISTANCE AND DIRECTION. SHOW THE DISCREPANCY ON THE PLAN VIEW DRAWING UNDER (D), ABOVE. SHOW THE DISTANCES BETWEEN THE CORNER AS PREVIOUSLY RESTORED OR REESTABLISHED AND (1) THE CORNER AS RESTORED OR REESTABLISHED, AND (2) TO AT LEAST 2 OF THE WITNESS MONUMENTS SHOWN ON THE DRAWING IN (D) ABOVE.

N/A

(F) WAS THE CORNER RESTORED THROUGH ACCEPTANCE OF (1) AN OBLITERATED EVIDENCE LOCATION, OR (2) A FOUND PERPETUATED LOCATION?

(2) A FOUND PERPETUATED LOCATION

(G&H) WAS THE CORNER REESTABLISHED THROUGH LOST CORNER PROPORTIONATE METHODS? IF SO, SHOW THE METHOD, INCLUDING THE DIRECTIONS AND DISTANCES TO OTHER PUBLIC LAND SURVEY CORNERS USED AS EVIDENCE OR USED FOR PROPORTIONING IN DETERMINING THE CORNER LOCATION.

N/A

CORNER HISTORY

THIS CORNER WAS NOT ESTABLISHED BY THE ORIGINAL GOVERNMENT SURVEY.

IN A SURVEY DATED 8 MARCH 1849, GEO. STUNTZ SETS CORNER BY "RUNNING FROM NW CORNER TO NE CORNER OF SECTION 80.52 CHAINS."

IN A SURVEY DATED 19 DECEMBER 1892, CHARLES SAMPSON FOUND A BEARING TREE AND SET A STONE AT THIS CORNER.

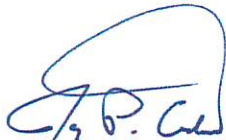
IN A TIE SHEET DATED 18 FEBRUARY 1998, LARRY AUSTIN REPORTS SETTING A 3/4" x 24" IRON BAR WITH GRANT COUNTY ALUMINUM CAP AT THE AVERAGE OF THE RECORDED OFFSETS OF THE NORTHEAST AND NORTHWEST CORNERS OF SECTION 5. THIS LOCATION IS SUPPORTED BY OCCUPATIONAL EVIDENCE EAST OF THE CORNER.

IN A CERTIFIED SURVEY MAP DATED 27 APRIL 1998, THOMAS BUCK REPORTS AN IRON ROD WITH ALUMINUM CAP AT THE CORNER.

IN A PLATS OF SURVEY DATED 15 APRIL 2010 AND 16 APRIL 2010, LARRY AUSTIN REPORTED FINDING A #6 REBAR WITH ALUMINUM CAP AT THE CORNER.

AFFIX LAND SURVEYOR SEAL

(I) I, JAY P. ADAMS, P.L.S. - 2879, CERTIFY THAT THE CORNER LOCATION SHOWN ON THIS RECORD WAS DETERMINED BY ME OR UNDER MY DIRECTION AND CONTROL AND THAT THIS U.S. PUBLIC LAND SURVEY MONUMENT RECORD IS CORRECT AND COMPLETE TO THE BEST OF MY KNOWLEDGE AND BELIEF.



SIGNATURE

5 DECEMBER 2017

DATE



GRANT COUNTY

Survey Monument Record

TYPE OF MONUMENT 3/4" X 24" IRON BAR SET

STATE PLANE COORDINATES: N W/CAP
E _____

ELEVATION — M.S.L. DATUM: _____

THETA ANGLE: _____

FIELD BOOK: 96-01

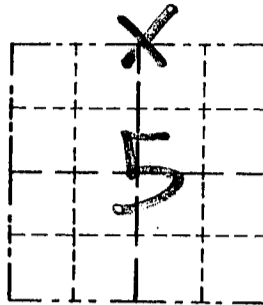
PAGE _____

CORNER NO. _____

SECTION 5

TOWN 37

RANGE 3W



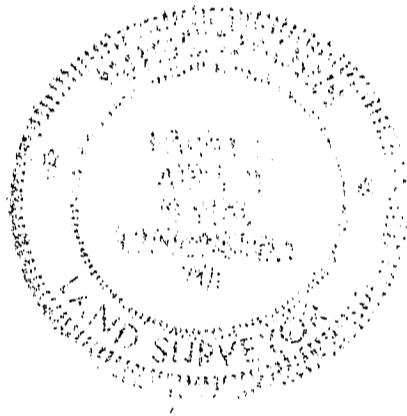
LOCATION
(Indicated by "X")

BASIS FOR MONUMENT LOCATION

(Use reverse side if necessary)

SAMPSON SET THE CORNER IN 1892; I RE-ESTABLISHED THE CORNER AT THE AVERAGE OF THE RECORDED OFFSETS AT THE NE COR & THE NW COR OF SEC. 5 AT RECORDED IN THE 0214. NOTES BY CLARK IN 1833; & ON THE SOUTH LINE OF SEC. 32, T4N, R3W; THIS LOCATION FITS WELL TO AN OCCUPIED "40" TO THE EAST. VERIFIED THIS LOCATION BY EDM TRAVERSE.

SEAL:



CERTIFIED CORRECT

Randy J. Aust
Registered Land Surveyor

DATE: 2/18/98

TIE SKETCH

Show at least three (3) ties and monument

