

RFEMON

33009

GRANT COUNTY U.S. PUBLIC LAND SURVEY MONUMENT RECORD

INSTRUCTIONS: THIS RECORD SHALL SHOW THE LOCATION OF THE CORNER AND SHALL INCLUDE ALL OF THE FOLLOWING ELEMENTS (A THROUGH I).

(A) IDENTIFY THE CORNER AS REFERENCED TO THE U.S. PUBLIC LAND SURVEY SYSTEM

■ = CORNER MONUMENT RESTORED

WITNESSES TO CORNER LOCATION:

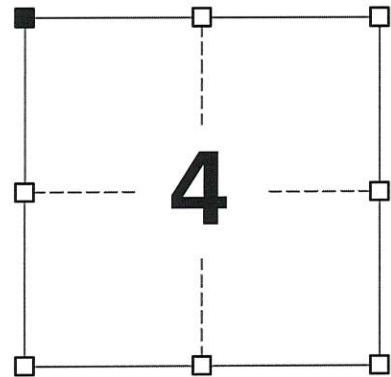
JAY P. ADAMS
BRADLEY R. BOMKAMP

GEOGRAPHIC COORDINATES,
NAD 83 (2011) ADJUSTMENT:

LATITUDE: 42° 46' 11.92083"
LONGITUDE: 90° 44' 27.74880"

WISCONSIN COORDINATE REFERENCE SYSTEM (WISCRS),
GRANT COUNTY, NAD 83 (2011) ADJUSTMENT:

NORTHING: 495,219.40
EASTING: 810,832.02



SECTION 4
TOWNSHIP 3 NORTH, RANGE 3 WEST
TOWN OF POTOSI

(B) DESCRIBE ANY RECORD EVIDENCE, MONUMENT EVIDENCE, OCCUPATIONAL EVIDENCE, TESTIMONIAL EVIDENCE OR ANY OTHER MATERIAL EVIDENCE YOU CONSIDERED, AND WHETHER THE MONUMENT WAS FOUND OR PLACED.

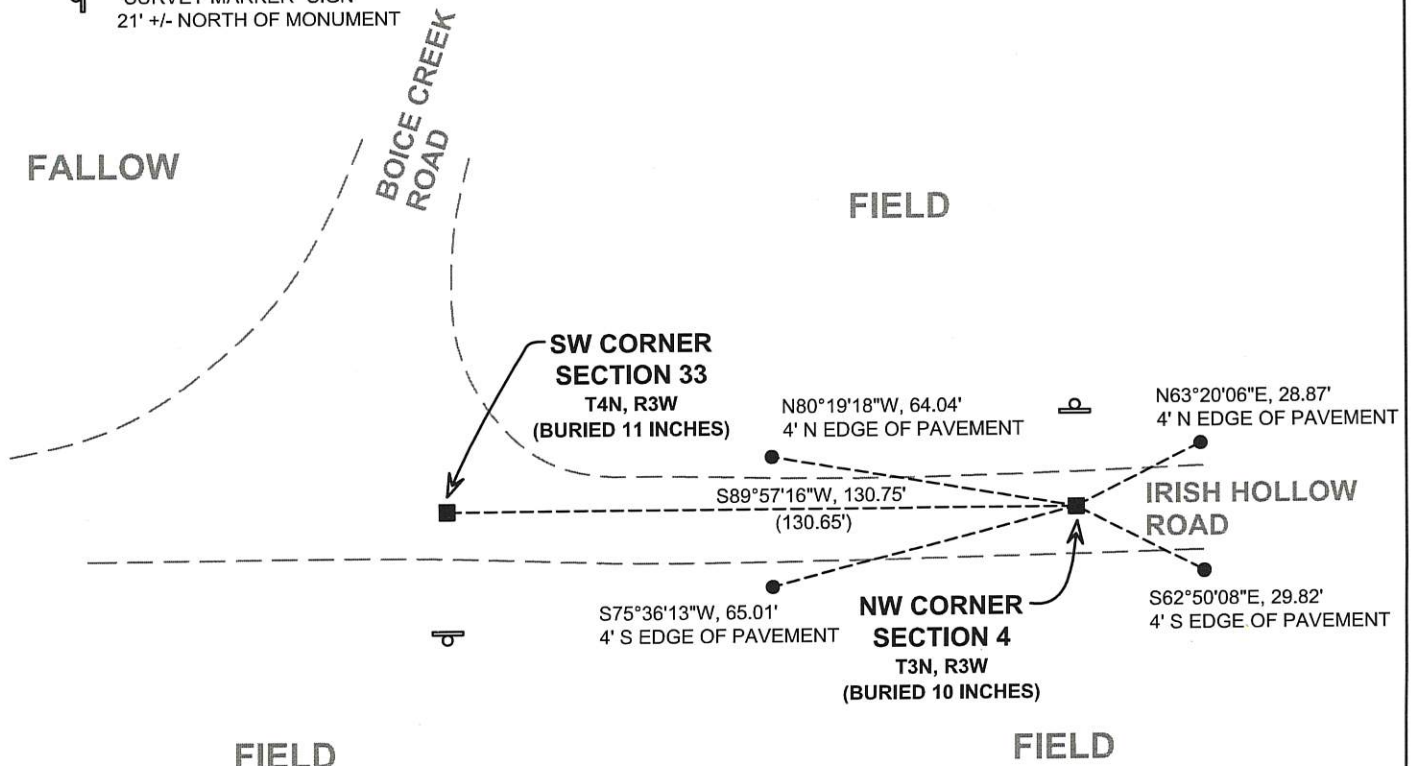
I COULD FIND NO MONUMENTS OR BEARING TREES FROM THE ORIGINAL GOVERNMENT SURVEY OR THE HISTORIC COUNTY SURVEYOR'S SUBSEQUENT RESURVEYS. I RECOVERED THE 3/4" IRON ROD WITH ALUMINUM CAP REFERENCED IN THE TIE SHEET BY AUSTIN. THIS LOCATION WAS ACCEPTED AS THE BEST AVAILABLE EVIDENCE OF THE ORIGINAL GOVERNMENT CORNER AND THE MONUMENT WAS LEFT IN PLACE BECAUSE OF EXCEPTIONAL STABILITY.

(C) IN THE PLAN VIEW DRAWING BELOW, PROVIDE REFERENCE TIES TO AT LEAST 4 WITNESS MONUMENTS. WITNESS MONUMENTS SHALL BE MADE OF CONCRETE, NATURAL STONE, IRON, BEARING TREES OR ANY OTHER EQUALLY DURABLE MATERIAL. DEPICT THE RELEVANT MONUMENTS AND REFERENCE TIES WITH SUFFICIENT DETAIL TO ENABLE ACCURATE RELOCATION OF THE CORNER IF THE CORNER MONUMENT IS DISTURBED.

(D)

LEGEND:

- FOUND 3/4" REBAR WITH GRANT COUNTY ALUMINUM CAP
- 3/4" x 24" IRON ROD SET AS ACCESSORY
- ⊕ "SURVEY MARKER" SIGN 21' +/- NORTH OF MONUMENT



(E) DESCRIBE ANY MATERIAL DISCREPANCY BETWEEN THE LOCATION OF THE CORNER AS RESTORED OR REESTABLISHED AND THE LOCATION OF THAT CORNER AS PREVIOUSLY RESTORED OR REESTABLISHED BY DISTANCE AND DIRECTION. SHOW THE DISCREPANCY ON THE PLAN VIEW DRAWING UNDER (D), ABOVE. SHOW THE DISTANCES BETWEEN THE CORNER AS PREVIOUSLY RESTORED OR REESTABLISHED AND (1) THE CORNER AS RESTORED OR REESTABLISHED, AND (2) TO AT LEAST 2 OF THE WITNESS MONUMENTS SHOWN ON THE DRAWING IN (D) ABOVE.

N/A

(F) WAS THE CORNER RESTORED THROUGH ACCEPTANCE OF (1) AN OBLITERATED EVIDENCE LOCATION, OR (2) A FOUND PERPETUATED LOCATION?

(2) A FOUND PERPETUATED LOCATION

(G&H) WAS THE CORNER REESTABLISHED THROUGH LOST CORNER PROPORTIONATE METHODS? IF SO, SHOW THE METHOD, INCLUDING THE DIRECTIONS AND DISTANCES TO OTHER PUBLIC LAND SURVEY CORNERS USED AS EVIDENCE OR USED FOR PROPORTIONING IN DETERMINING THE CORNER LOCATION.

N/A

CORNER HISTORY

THE ORIGINAL GOVERNMENT CORNER WAS SET BY ROBERT CLARK, JR IN THE FIRST QUARTER OF 1833.

IN A SURVEY DATED 2 MAY 1842, JOS. FREEMAN MEASURED TO THE CORNER.

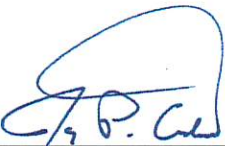
IN A SURVEY DATED 19 DECEMBER 1892, CHARLES SAMPSON SET A STONE AT THIS CORNER.

IN A TIE SHEET DATED 18 FEBRUARY 1998, LARRY AUSTIN REPORTS SETTING A 3/4" x 24" IRON BAR WITH GRANT COUNTY ALUMINUM CAP AT THE RECORDED GOVERNMENT OFFSET FROM THE SOUTHWEST CORNER OF SECTION 33, T4N, R3W. THIS LOCATION WAS SUPPORTED BY OCCUPATIONAL EVIDENCE EAST OF THE CORNER.

IN PLATS OF SURVEY DATED 15 APRIL 2010 AND 16 APRIL 2010, LARRY AUSTIN REPORTED FINDING A #6 REBAR WITH ALUMINUM CAP AT THE CORNER.

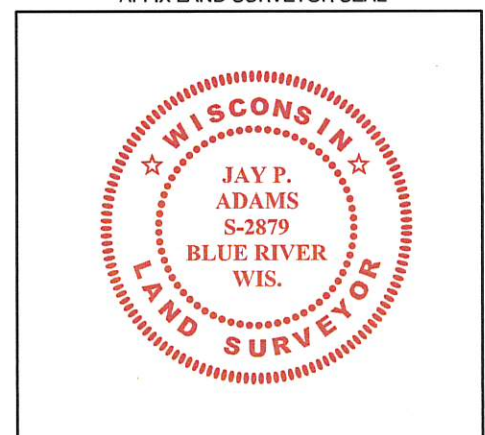
AFFIX LAND SURVEYOR SEAL

(I) I, JAY P. ADAMS, P.L.S. - 2879, CERTIFY THAT THE CORNER LOCATION SHOWN ON THIS RECORD WAS DETERMINED BY ME OR UNDER MY DIRECTION AND CONTROL AND THAT THIS U.S. PUBLIC LAND SURVEY MONUMENT RECORD IS CORRECT AND COMPLETE TO THE BEST OF MY KNOWLEDGE AND BELIEF.


SIGNATURE

5 DECEMBER 2017

DATE



GRANT COUNTY

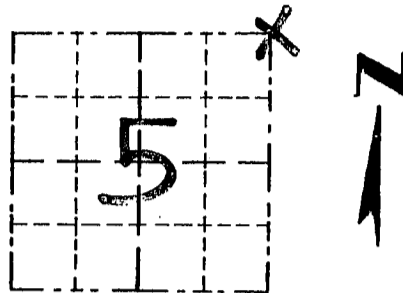
Survey Monument Record

TYPE OF MONUMENT 3/4" X 24" IRON BAR
 STATE PLANE COORDINATES: N SET W/CAP.
 E _____
 ELEVATION — M.S.L. DATUM: _____
 THETA ANGLE: _____
 FIELD BOOK: 96-01
 PAGE _____

CORNER NO. _____
 SECTION 5
 TOWN 3N
 RANGE 3W

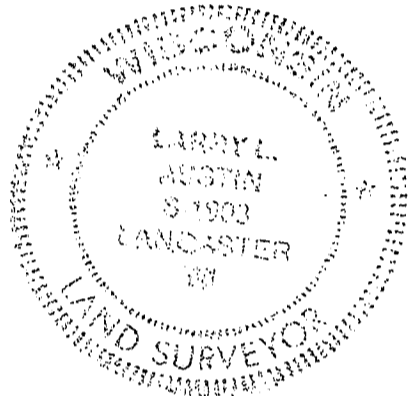
BASIS FOR MONUMENT LOCATION

(Use reverse side if necessary)



LOCATION
(Indicated by "X")

ORIGINAL CORNER SET IN 1833
 BY R. CLARK. IN 1892 C. SEAL:
 SAMPSON RE-ESTABLISHED THE
 CORNER AT THE RECORDED OFFSET
 OF 1.98 CHAINS EAST OF THE
 SW CORNER OF SEC. 33, T4N, R3W;
 I SET THE CORNER AT THE
 ABOVE OFFSET ON THE SOUTH
 LINE SECTION 33; THIS LOCATION
 FITS THE OCCUPIED "40" CORNER
 TO THE EAST; ACCEPTED THIS AS
 THE CORNER LOCATION AFTER
 VERIFICATION BY EDM TRAVERSE,



CERTIFIED CORRECT

Larry L. Justin
 Registered Land Surveyor

DATE: 2/18/98

TIE SKETCH

Show at least three (3) ties and monument

