

REMON
33008

GRANT COUNTY U.S. PUBLIC LAND SURVEY MONUMENT RECORD

INSTRUCTIONS: THIS RECORD SHALL SHOW THE LOCATION OF THE CORNER AND SHALL INCLUDE ALL OF THE FOLLOWING ELEMENTS (A THROUGH I).

(A) IDENTIFY THE CORNER AS REFERENCED TO THE U.S. PUBLIC LAND SURVEY SYSTEM

■ = CORNER MONUMENT RESTORED

WITNESSES TO CORNER LOCATION:

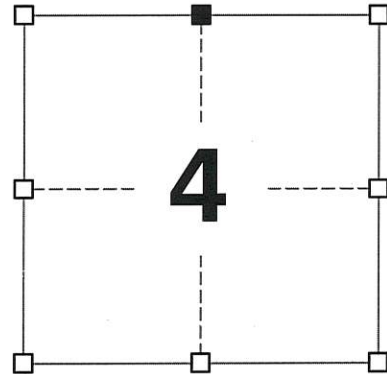
JAY P. ADAMS
MATTHEW S. SCHNEIDER

GEOGRAPHIC COORDINATES,
NAD 83 (2011) ADJUSTMENT:

LATITUDE: 42° 46' 11.91261"
LONGITUDE: 90° 43' 51.78950"

WISCONSIN COORDINATE REFERENCE SYSTEM (WISCRS),
GRANT COUNTY, NAD 83 (2011) ADJUSTMENT:

NORTHING: 495,220.60
EASTING: 813,514.26



SECTION 4
TOWNSHIP 3 NORTH, RANGE 3 WEST
TOWN OF POTOSI

(B) DESCRIBE ANY RECORD EVIDENCE, MONUMENT EVIDENCE, OCCUPATIONAL EVIDENCE, TESTIMONIAL EVIDENCE OR ANY OTHER MATERIAL EVIDENCE YOU CONSIDERED, AND WHETHER THE MONUMENT WAS FOUND OR PLACED.

I COULD FIND NO MONUMENTS OR BEARING TREES FROM THE HISTORIC COUNTY SURVEYOR'S SURVEY. I RECOVERED THE #8 REBAR WITH ALUMINUM CAP REFERENCED IN THE TIE SHEET BY AUSTIN. THIS LOCATION DOES NOT MATCH OCCUPATIONAL EVIDENCE SOUTH OF THE CORNER. AUSTIN REPORTS THAT A LOCAL LANDOWNER STATED THAT THE LAST TIME THE NEARBY FENCE WAS REPLACED THAT IT WAS MOVED TO THE WEST. HISTORICAL AERIAL IMAGERY SHOW THAT SOUTH OF THIS CORNER, A LONG-STANDING, NORTH-SOUTH FENCE TO SUPPORT A LOCATION WEST OF AUSTIN'S MONUMENT. I ACCEPTED FREEMAN'S RECORDED DISTANCE FROM THE NORTHWEST CORNER AS THE BEST AVAILABLE EVIDENCE OF THE CORNER AND REMONUMENTED IT WITH A 2" x 30" STAINLESS STEEL PIPE WITH A 4" GRANT COUNTY BRASS CAP AS DEPICTED BELOW. I REMOVED THE CAP FROM THE #8 REBAR SET BY AUSTIN AND LEFT THE REBAR IN PLACE.

(C) IN THE PLAN VIEW DRAWING BELOW, PROVIDE REFERENCE TIES TO AT LEAST 4 WITNESS MONUMENTS. WITNESS MONUMENTS SHALL BE MADE OF CONCRETE, NATURAL STONE, IRON, BEARING TREES OR ANY OTHER EQUALLY DURABLE MATERIAL. DEPICT THE RELEVANT MONUMENTS AND REFERENCE TIES WITH SUFFICIENT DETAIL TO ENABLE ACCURATE RELOCATION OF THE CORNER IF THE CORNER MONUMENT IS DISTURBED.

(D)

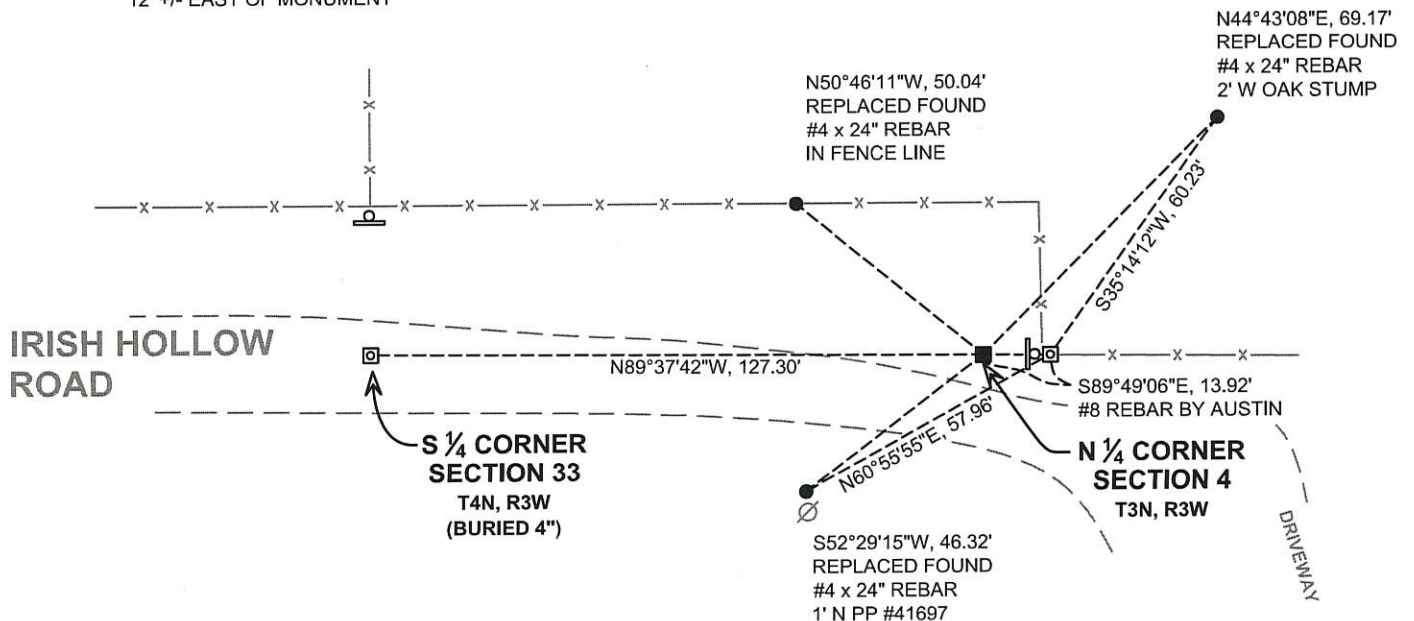
LEGEND:

- SET 2" x 30" STAINLESS STEEL PIPE w/ 4" BRASS CAP
- ⊠ FOUND #8 REBAR WITH GRANT COUNTY ALUMINUM CAP
- 3/4" x 24" IRON ROD SET AS ACCESSORY
- ⊞ "SURVEY MARKER" SIGN 12' +/- EAST OF MONUMENT



PASTURE

PASTURE



(E) DESCRIBE ANY MATERIAL DISCREPANCY BETWEEN THE LOCATION OF THE CORNER AS RESTORED OR REESTABLISHED AND THE LOCATION OF THAT CORNER AS PREVIOUSLY RESTORED OR REESTABLISHED BY DISTANCE AND DIRECTION. SHOW THE DISCREPANCY ON THE PLAN VIEW DRAWING UNDER (D), ABOVE. SHOW THE DISTANCES BETWEEN THE CORNER AS PREVIOUSLY RESTORED OR REESTABLISHED AND (1) THE CORNER AS RESTORED OR REESTABLISHED, AND (2) TO AT LEAST 2 OF THE WITNESS MONUMENTS SHOWN ON THE DRAWING IN (D) ABOVE.

THIS CORNER WAS PREVIOUSLY REESTABLISHED BY LARRY AUSTIN IN 2011 WITH A #8 x 30" REBAR WITH A GRANT COUNTY ALUMINUM CAP.

(F) WAS THE CORNER RESTORED THROUGH ACCEPTANCE OF (1) AN OBLITERATED EVIDENCE LOCATION, OR (2) A FOUND PERPETUATED LOCATION?

(1) AN OBLITERATED EVIDENCE LOCATION

(G&H) WAS THE CORNER REESTABLISHED THROUGH LOST CORNER PROPORTIONATE METHODS? IF SO, SHOW THE METHOD, INCLUDING THE DIRECTIONS AND DISTANCES TO OTHER PUBLIC LAND SURVEY CORNERS USED AS EVIDENCE OR USED FOR PROPORTIONING IN DETERMINING THE CORNER LOCATION.

N/A

CORNER HISTORY

THIS CORNER WAS NOT ESTABLISHED BY THE ORIGINAL GOVERNMENT SURVEY.

IN A SURVEY DATED 2 MAY 1842, JOS. FREEMAN MEASURED TO THE CORNER NOTING THAT IT WAS 40.64 CHAINS EAST OF THE NORTHWEST CORNER OF THE SECTION.

IN PLATS OF SURVEY DATED 15 APRIL 2010 AND 16 APRIL 2010, LARRY AUSTIN REPORTED FINDING A #8 REBAR WITH ALUMINUM CAP AT THE CORNER.

IN A TIE SHEET DATED 18 FEBRUARY 2011, LARRY AUSTIN REPORTS SETTING A #8 x 30" REBAR WITH GRANT COUNTY ALUMINUM CAP AT THE PROPORTIONED OFFSET FROM THE SOUTH QUARTER CORNER OF SECTION 33, T4N,R3W.

AFFIX LAND SURVEYOR SEAL

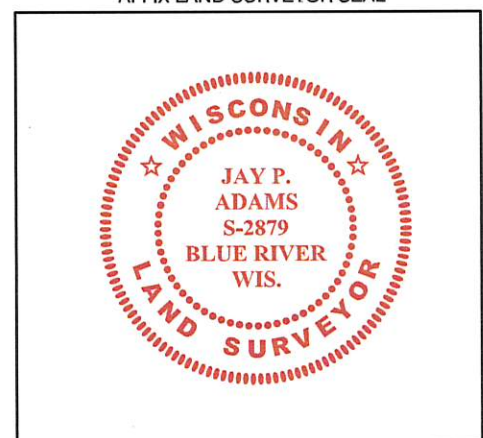
(I) I, JAY P. ADAMS, P.L.S. - 2879, CERTIFY THAT THE CORNER LOCATION SHOWN ON THIS RECORD WAS DETERMINED BY ME OR UNDER MY DIRECTION AND CONTROL AND THAT THIS U.S. PUBLIC LAND SURVEY MONUMENT RECORD IS CORRECT AND COMPLETE TO THE BEST OF MY KNOWLEDGE AND BELIEF.



SIGNATURE

5 DECEMBER 2017

DATE

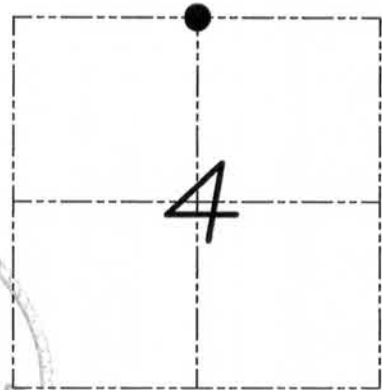


U.S. PUBLIC LAND SURVEY MONUMENT RECORD

Section 4, Town 3 North Range 3 West, Town of Potosi, Grant County, Wisconsin

CERTIFICATE

I, Larry L. Austin, do hereby certify that the corner location on this record was determined by me and/or under my direct supervision and that this U.S. public land survey monument record is correct and complete to the best of my knowledge and belief.



● = CORNER LOCATION

Larry L. Austin
Larry L. Austin, S-1903

2/18/11
date



HISTORY OF CORNER

Corner was never originally set.
No other record of the corner was found.

CORNER EVIDENCE FOUND

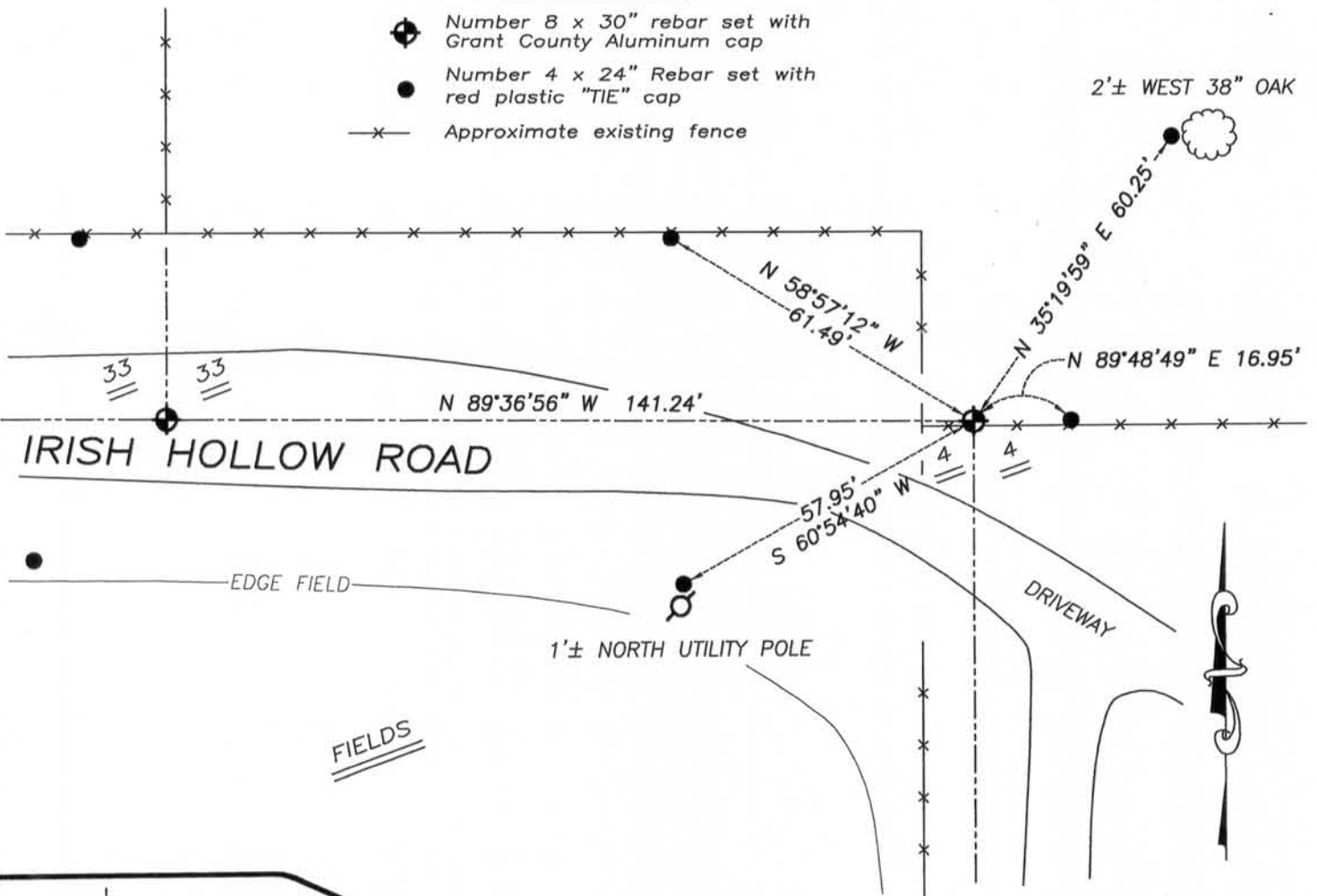
I set the corner at the proportioned offset from the South 1/4 of Section 33. This location was East of an existing fence. A local landowner stated that the fence was moved West the last time it was replaced. Verified this location using EDM & GPS methods.

DESCRIPTION OF CORNER AND WITNESS MONUMENTS, references and accessories used to perpetuate the original or re-established location of this corner. Witnesses to monument location Bobby Sedgwick & Brad Digman & Shelby Blindert

SKETCH:

LEGEND

- Number 8 x 30" rebar set with Grant County Aluminum cap
- Number 4 x 24" Rebar set with red plastic "TIE" cap
- x- Approximate existing fence



NOT TO SCALE



Austin Engineering LLC
austinengineeringllc.com

4211 HWY 81 E, LANCASTER, WI 53813
PHONE: 608-723-6363 FAX: 608-723-6702

JOB NUMBER 10S036-PIERCE
FIELDBOOK: TDSR, 2911
G:\T3NR3W\T3NR3W
H:\TIE\T3NR3W\08

DRAWN BY: SW AUSTIN
APPROVED: LL AUSTIN

08

FEB 23 2011