

REMON  
33004

## GRANT COUNTY U.S. PUBLIC LAND SURVEY MONUMENT RECORD

INSTRUCTIONS: THIS RECORD SHALL SHOW THE LOCATION OF THE CORNER AND SHALL INCLUDE ALL OF THE FOLLOWING ELEMENTS (A THROUGH I).

(A) IDENTIFY THE CORNER AS REFERENCED TO THE U.S. PUBLIC LAND SURVEY SYSTEM

■ = CORNER MONUMENT RESTORED

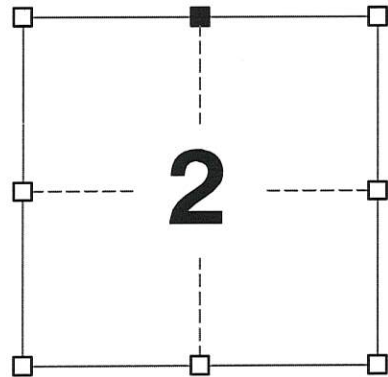
WITNESSES TO CORNER LOCATION:

JAY P. ADAMS  
STEVEN A. ALT  
MATTHEW S. SCHNEIDER  
GEOGRAPHIC COORDINATES,  
NAD 83 (2011) ADJUSTMENT:

LATITUDE: 42° 46' 11.27334"  
LONGITUDE: 90° 41' 29.68192"

WISCONSIN COORDINATE REFERENCE SYSTEM (WISCRS),  
GRANT COUNTY, NAD 83 (2011) ADJUSTMENT:

NORTHING: 495,167.02  
EASTING: 824,114.29



SECTION 2  
TOWNSHIP 3 NORTH, RANGE 3 WEST  
TOWN OF POTOSI

(B) DESCRIBE ANY RECORD EVIDENCE, MONUMENT EVIDENCE, OCCUPATIONAL EVIDENCE, TESTIMONIAL EVIDENCE OR ANY OTHER MATERIAL EVIDENCE YOU CONSIDERED, AND WHETHER THE MONUMENT WAS FOUND OR PLACED.

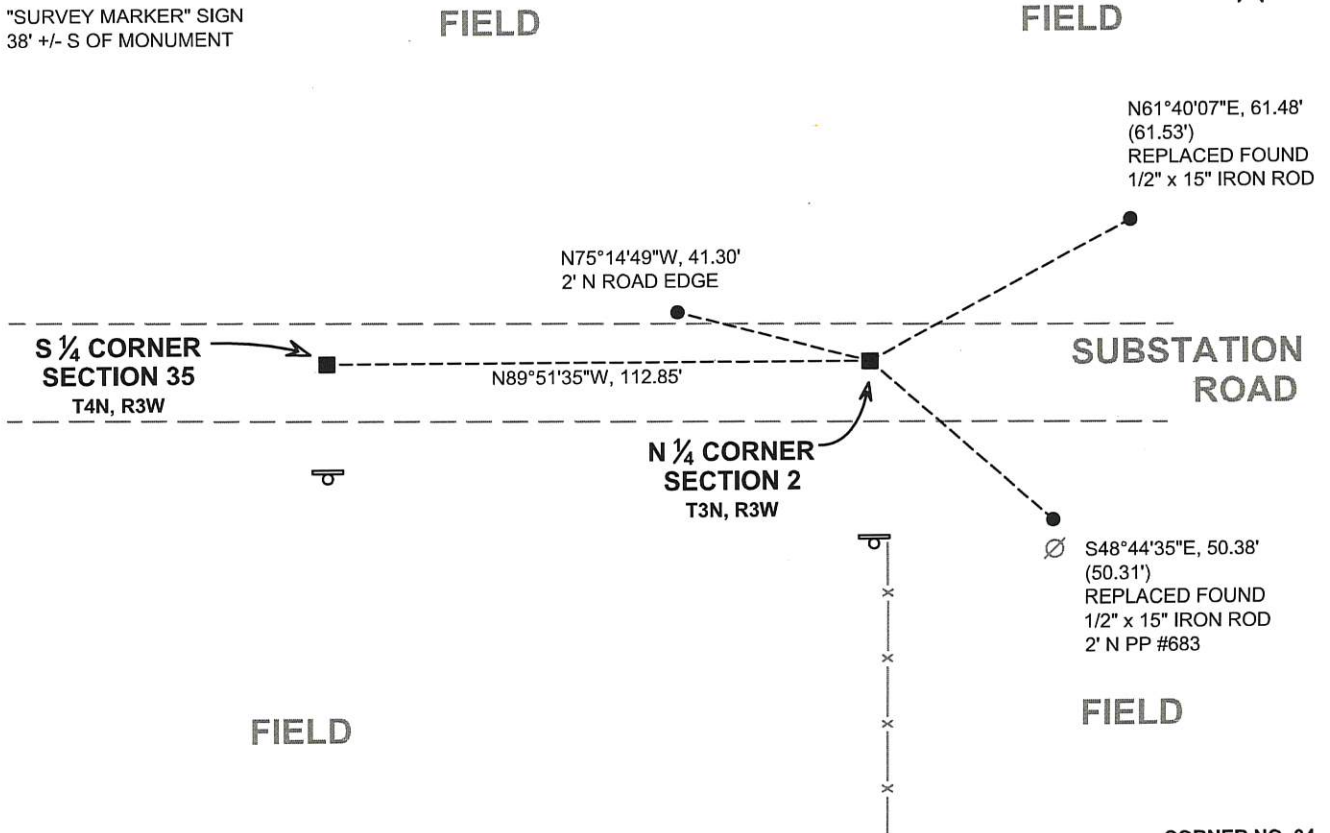
I RECOVERED THE 3/4" REBAR (CAP MISSING) SET BY AUSTIN. I ALSO LOCATED A SECOND 3/4" REBAR AND A MASONRY NAIL NEAR AUSTIN'S CORNER (SEE REVERSE FOR DETAIL). AUSTIN'S CORNER WAS VERIFIED THROUGH MEASUREMENTS TO TIES ON HIS TIE SHEET. I COULD FIND NO EVIDENCE OF HAYDEN'S CORNER. THIS LOCATION WAS ACCEPTED AS THE BEST AVAILABLE EVIDENCE OF THE CORNER AND THE MONUMENT WAS LEFT IN PLACE BECAUSE OF EXCEPTIONAL STABILITY.

(C) IN THE PLAN VIEW DRAWING BELOW, PROVIDE REFERENCE TIES TO AT LEAST 4 WITNESS MONUMENTS. WITNESS MONUMENTS SHALL BE MADE OF CONCRETE, NATURAL STONE, IRON, BEARING TREES OR ANY OTHER EQUALLY DURABLE MATERIAL. DEPICT THE RELEVANT MONUMENTS AND REFERENCE TIES WITH SUFFICIENT DETAIL TO ENABLE ACCURATE RELOCATION OF THE CORNER IF THE CORNER MONUMENT IS DISTURBED.

(D)

**LEGEND:**

- FOUND 3/4" IRON ROD
- 3/4" x 24" IRON ROD SET AS ACCESSORY
- ⊓ "SURVEY MARKER" SIGN 38' +/- S OF MONUMENT



(E) DESCRIBE ANY MATERIAL DISCREPANCY BETWEEN THE LOCATION OF THE CORNER AS RESTORED OR REESTABLISHED AND THE LOCATION OF THAT CORNER AS PREVIOUSLY RESTORED OR REESTABLISHED BY DISTANCE AND DIRECTION. SHOW THE DISCREPANCY ON THE PLAN VIEW DRAWING UNDER (D), ABOVE. SHOW THE DISTANCES BETWEEN THE CORNER AS PREVIOUSLY RESTORED OR REESTABLISHED AND (1) THE CORNER AS RESTORED OR REESTABLISHED, AND (2) TO AT LEAST 2 OF THE WITNESS MONUMENTS SHOWN ON THE DRAWING IN (D) ABOVE.

N/A

(F) WAS THE CORNER RESTORED THROUGH ACCEPTANCE OF (1) AN OBLITERATED EVIDENCE LOCATION, OR (2) A FOUND PERPETUATED LOCATION?

(2) A FOUND PERPETUATED LOCATION.

(G&H) WAS THE CORNER REESTABLISHED THROUGH LOST CORNER PROPORTIONATE METHODS? IF SO, SHOW THE METHOD, INCLUDING THE DIRECTIONS AND DISTANCES TO OTHER PUBLIC LAND SURVEY CORNERS USED AS EVIDENCE OR USED FOR PROPORTIONING IN DETERMINING THE CORNER LOCATION.

N/A

CORNER HISTORY

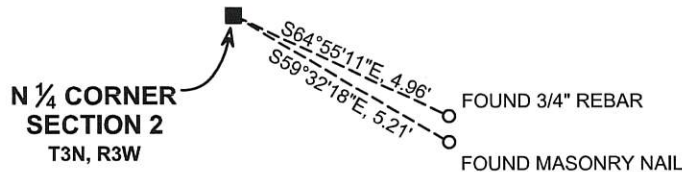
THIS CORNER WAS NOT ESTABLISHED BY THE ORIGINAL GOVERNMENT SURVEY.

IN A SURVEY DATED 29 DECEMBER 1857, RECORDED IN VOLUME C, PAGE 176 OF SURVEY RECORDS, C. WHITNEY HAYDEN UTILIZED THE CORNER.

IN A PLAT OF SURVEY DATED 3 MAY 1996, LARRY AUSTIN SET A 3/4" X 24" IRON ROD WITH ALUMINUM CAP AT THE CORNER. THIS CORNER IS REFERENCED ON A TIE SHEET BY LARRY AUSTIN DATED 20 DECEMBER 1997.

IN A PLAT OF SURVEY DATED 30 JUNE 2004, LARRY AUSTIN REPORTED FINDING A #6 REBAR WITH CAP AT THE CORNER.

CORNER DETAIL



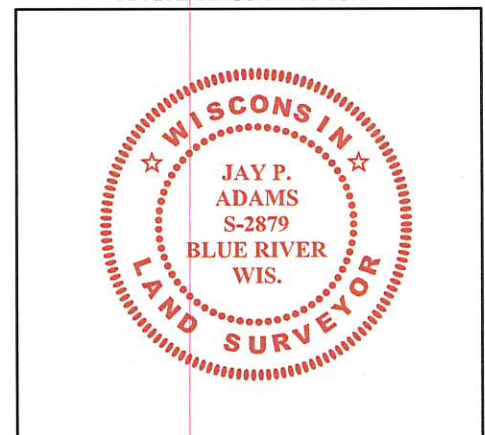
AFFIX LAND SURVEYOR SEAL

(I) I, JAY P. ADAMS, P.L.S. - 2879, CERTIFY THAT THE CORNER LOCATION SHOWN ON THIS RECORD WAS DETERMINED BY ME OR UNDER MY DIRECTION AND CONTROL AND THAT THIS U.S. PUBLIC LAND SURVEY MONUMENT RECORD IS CORRECT AND COMPLETE TO THE BEST OF MY KNOWLEDGE AND BELIEF.

SIGNATURE

5 DECEMBER 2017

DATE

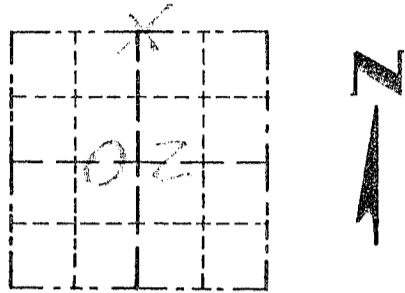


Survey Monument Record

TYPE OF MONUMENT 3/4" X 24" IRON BAR  
SET W/ CAP

CORNER NO. 4  
 SECTION 02  
 TOWN 3N  
 RANGE 3W

FIELD BOOK: 96-01  
 PAGE (20)



LOCATION  
 (Indicated by "X")

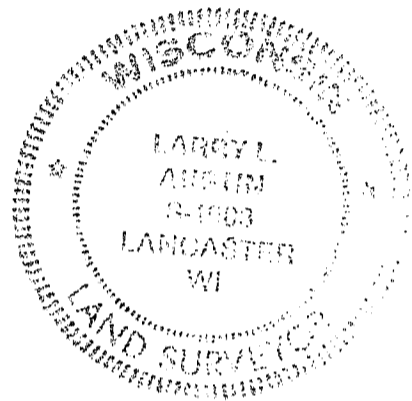
BASIS FOR MONUMENT LOCATION

(Use reverse side if necessary)

Show info such as: History of corner, with reference to Vol. and pg, dates, surveyor; exact description of monument replaced; if location computed, by taped or EDM traverse; landowner, remarks, etc.

SEAL:

NO RECORD OF THE CORNER FOUND. I SET THE CORNER ON THE SOUTH LINE OF SECTION 35 AT THE AVERAGE OF THE RECORDED OFFSETS AT THE SE COR. OF SECTION 35 & THE SW COR. OF SECTION 35. VERIFIED THIS LOCATION BY EDM TRAVERSE OF THE AREA.



CERTIFIED CORRECT

Larry L. Austin  
 Registered Land Surveyor

DATE: 12-20-97

TIE SKETCH

Show at least three (3) ties and monument

LEGEND

- ⊕ 3/4" X 24" IRON BAR SET W/ ALUM. CAP.
- 3/4" IRON BAR
- 1/2" X 15" IRON BAR SET

