

33003

GRANT COUNTY U.S. PUBLIC LAND SURVEY MONUMENT RECORD

DATUM: WISCONSIN COORDINATE REFERENCE SYSTEM (WISCRS), GRANT COUNTY, NAD 83 (2011) ADJ.

GRANT COUNTY COORDINATES

CONTROL: MULTIPLE GPS OBSERVATIONS

NORTH 495,160.53

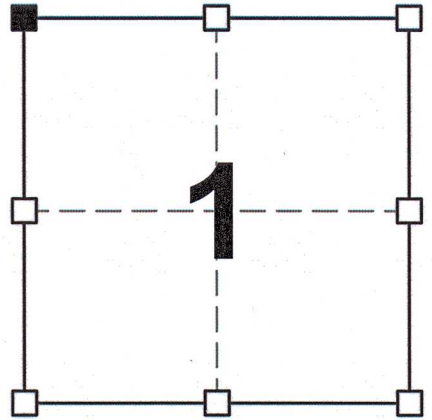
EAST 826,760.89

GEOGRAPHIC COORDINATES

LONG. 90°40'54.20064"

LAT. 42°46'11.17408"

*THE NORTHWEST CORNER OF SECTION 1,
TOWNSHIP 3 NORTH, RANGE 3 WEST, TOWN OF
POTOSI, GRANT COUNTY, WISCONSIN.*



SECTION 1
TOWNSHIP 3 NORTH, RANGE 3 WEST
TOWN OF POTOSI

(A) IDENTIFY THE CORNER BY REFERENCE TO THE U.S. PUBLIC LAND SURVEYSYSTEM

■ = CORNER MONUMENT RESTORED

WITNESS TO CORNER LOCATION:

**JEREMY F. KRACHEY
PAIGE O. JELINEK**

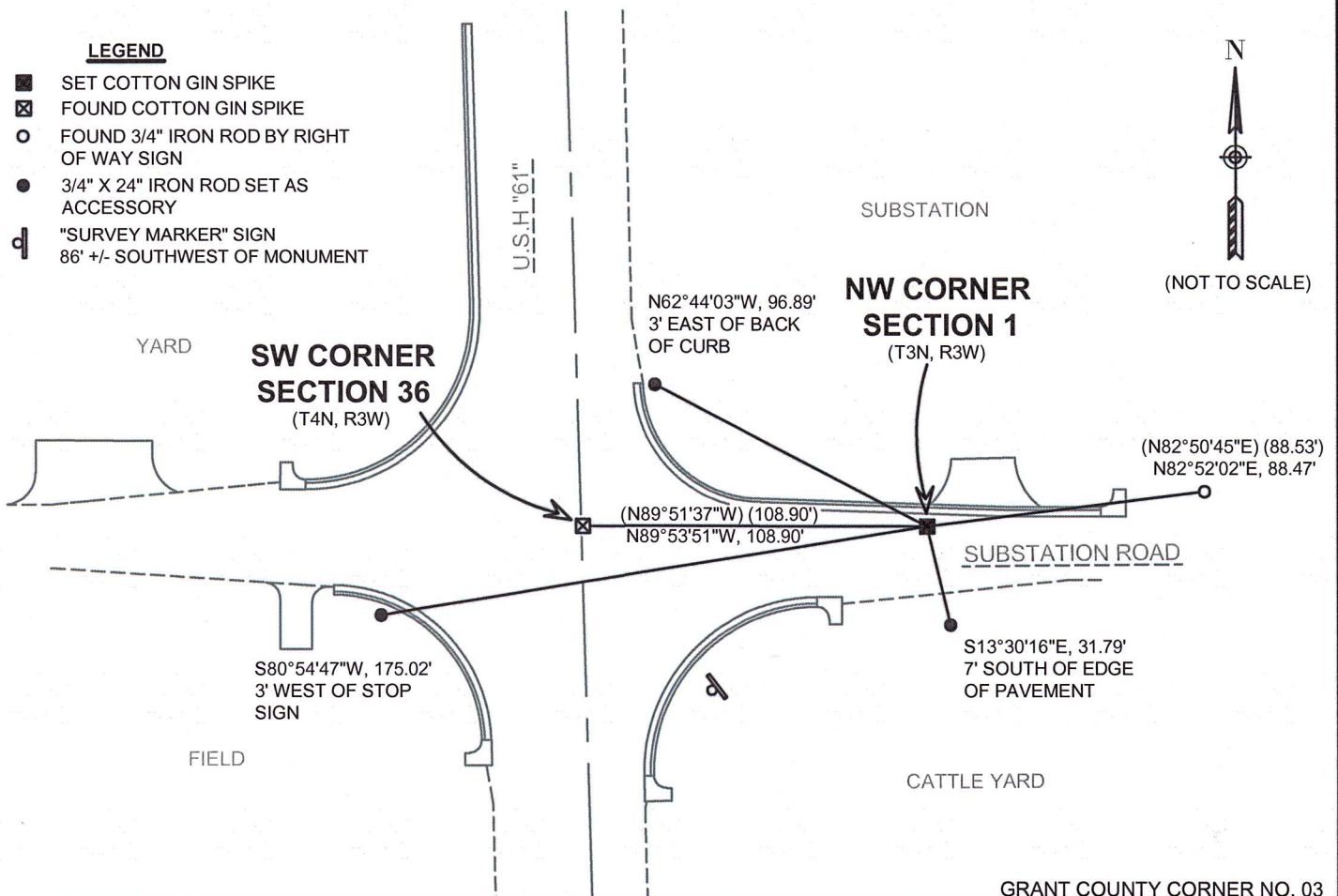
(B) DESCRIBE ANY RECORD EVIDENCE, MONUMENT EVIDENCE, OCCUPATIONAL EVIDENCE, TESTIMONIAL EVIDENCE OR ANY OTHER MATERIAL EVIDENCE YOU CONSIDERED, AND WHETHER THE MONUMENT WAS FOUND OR PLACED.

I COULD FIND NO MONUMENTS OR BEARING TREES FROM THE COUNTY SURVEYOR'S SUBSEQUENT RESURVEY. DURING THE CONSTRUCTION OF U.S.H. "61" THE 1-1/4" IRON ROD WAS RECOVERED AS DOCUMENTED ON A TIE SHEET BY JAY ADAMS. UPON FINDING THE 1-1/4" IRON ROD, WE SHOT THE MONUMENT AND SET A COTTON GIN SPIKE AT THE CORNER LOCATION ONCE CONSTRUCTION WAS COMPLETED ON 11-10-23. I ACCEPTED THIS LOCATION AS THE BEST AVAILABLE EVIDENCE OF THE ORIGINAL GOVERNMENT CORNER BASED ON PREVIOUSLY FOUND MONUMENT.

(C) IN THE PLAN VIEW DRAWING BELOW, PROVIDE REFERENCE TIES TO AT LEAST 4 WITNESS MONUMENTS OR, IF THE LOCATION IS WITHIN A MUNICIPALITY, TO AT LEAST 2 WITNESS MONUMENTS. (WITNESS MONUMENTS SHALL BE MADE ON CONCRETE, NATURAL STONE, IRON, OR OTHER EQUALLY DURABLE MATERIAL.) DESCRIBE WITNESS MONUMENTS.

LEGEND

- SET COTTON GIN SPIKE
- ⊠ FOUND COTTON GIN SPIKE
- FOUND 3/4" IRON ROD BY RIGHT OF WAY SIGN
- 3/4" X 24" IRON ROD SET AS ACCESSORY
- ⊣ "SURVEY MARKER" SIGN 86' +/- SOUTHWEST OF MONUMENT



(D) DESCRIBE ANY MATERIAL DISCREPANCY BETWEEN THE LOCATION OF THE CORNER AS RESTORED OR ESTABLISHED AND THE LOCATION OF THAT CORNER AS PREVIOUSLY RESTORED OR REESTABLISHED BY DISTANCE AND DIRECTION. SHOW THE DISCREPANCY ON THE PLAN VIEW DRAWING UNDER (C), ABOVE. SHOW THE DISTANCES BETWEEN THE CORNER AS PREVIOUSLY RESTORED OR REESTABLISHED AND (1) THE CORNER AS RESTORED OR REESTABLISHED, AND (2) TO AT LEAST 2 OF THE WITNESS MONUMENTS AS SHOWN ON THE DRAWING IN (C), ABOVE.

N/A

(E) WAS THE CORNER RESTORED THROUGH ACCEPTANCE OF (1) AN OBLITERATED EVIDENCE LOCATION, OR (2) A FOUND PERPETUATED LOCATION?

(2) A FOUND PERPETUATED LOCATION

(F & G) WAS THE CORNER REESTABLISHED THROUGH LOST CORNER PROPORTIONATE METHODS? IF SO SHOW THE METHOD, INCLUDING THE DIRECTION AND DISTANCED TO OTHER PUBLIC LAND SURVEY CORNERS USED AS EVIDENCE OR USED FOR PROPORTIONING IN DETERMINING THE CORNER LOCATION.

N/A

CORNER HISTORY:

THIS CORNER WAS NOT ESTABLISHED BY THE ORIGINAL GOVERNMENT SURVEY.

C. WHITNEY HAYDEN PERFORMED A SURVEY DATED DECEMBER 29, 1857 AND FOUND THE CORNER.

PLAT OF SURVEY DATED MAY 3, 1996, LARRY AUSTIN SET A 3/4" x 24" IRON ROD WITH ALUMINUM CAP AT THE CORNER.

TIE SHEET 2-21-2000, LARRY AUSTIN SET A RAILROAD SPIKE AT THE CORNER.

PLAT OF SURVEY DATED JUNE 30, 2004, LARRY AUSTIN REPORTED FINDING A NO. 6 REBAR WITH CAP AT THE CORNER.

TIE SHEET 12-9-2011, AARON AUSTIN SET A NO. 8 x 30" REBAR WITH A GRANT COUNTY ALUMINUM CAP AT THE CORNER.

PLAT OF SURVEY DATED MARCH 14, 2012, AARON AUSTIN FOUND A NO. 8 REBAR WITH GRANT COUNTY ALUMINUM CAP

TIE SHEET 12-5-2017, JAY ADAMS SET A 1-1/4" x 30" IRON ROD AT THE CORNER.

PLAT OF SURVEY DATED JANUARY 31, 2022, AARON AUSTIN FOUND A BRASS CAP AND TIES AT THE CORNER.

PRECONSTRUCTION ALTA/NSPS LAND TITLE SURVEY LAST REVISED JULY 19, 2023, BRANDON ELSBREE NOTED THE CORNER ON THE PLAN.

AFFIX LAND SURVEYOR SEAL

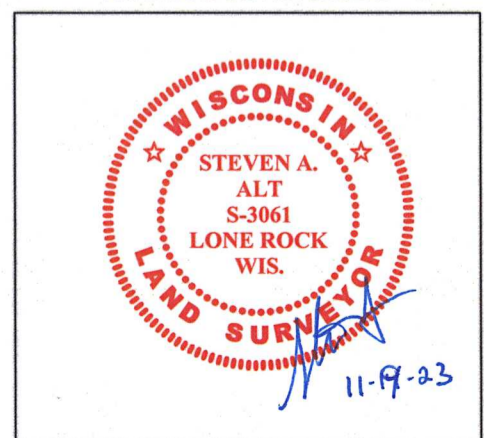
(H) I, STEVEN A. ALT, P.L.S 3061 CERTIFY THAT THE CORNER LOCATION SHOWN ON THIS RECORD WAS DETERMINED BY ME OR UNDER MY DIRECTION AND CONTROL AND THAT THIS U.S. PUBLIC LAND SURVEY MONUMENT RECORD IS CORRECT AND COMPLETE TO THE BEST OF MY KNOWLEDGE AND BELIEF.



SIGNATURE

11-9-2023

DATE



REMON

33003

GRANT COUNTY U.S. PUBLIC LAND SURVEY MONUMENT RECORD

INSTRUCTIONS: THIS RECORD SHALL SHOW THE LOCATION OF THE CORNER AND SHALL INCLUDE ALL OF THE FOLLOWING ELEMENTS (A THROUGH I).

(A) IDENTIFY THE CORNER AS REFERENCED TO THE U.S. PUBLIC LAND SURVEY SYSTEM

■ = CORNER MONUMENT RESTORED

WITNESSES TO CORNER LOCATION:

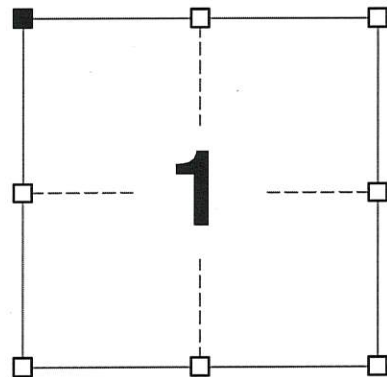
JAY P. ADAMS
STEVEN A. ALT

GEOGRAPHIC COORDINATES,
NAD 83 (2011) ADJUSTMENT:

LATITUDE: 42° 46' 11.17423"
LONGITUDE: 90° 40' 54.20158"

WISCONSIN COORDINATE REFERENCE SYSTEM (WISCRS),
GRANT COUNTY, NAD 83 (2011) ADJUSTMENT:

NORTHING: 495,160.55
EASTING: 826,760.82



SECTION 1
TOWNSHIP 3 NORTH, RANGE 3 WEST
TOWN OF POTOSI

(B) DESCRIBE ANY RECORD EVIDENCE, MONUMENT EVIDENCE, OCCUPATIONAL EVIDENCE, TESTIMONIAL EVIDENCE OR ANY OTHER MATERIAL EVIDENCE YOU CONSIDERED, AND WHETHER THE MONUMENT WAS FOUND OR PLACED.

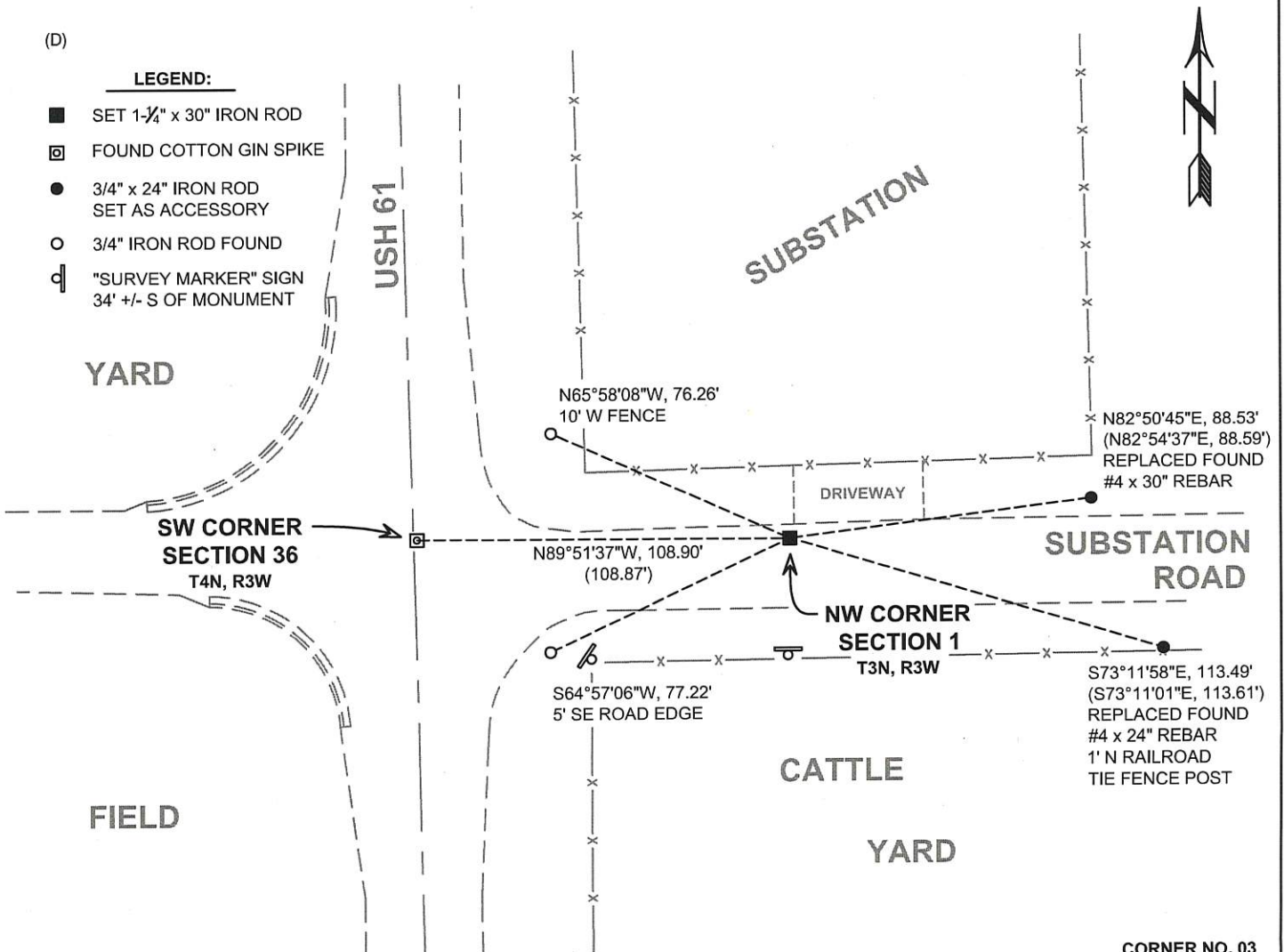
I RECOVERED THE #8 x 30" REBAR (CAP MISSING) SET BY AUSTIN. THE REBAR WAS FOUND TIPPED TO THE WEST. I ACCEPTED THIS LOCATION AS THE BEST AVAILABLE EVIDENCE OF THE ORIGINAL GOVERNMENT CORNER AND REMONUMENTED SAID LOCATION WITH A 1-1/4" x 30" IRON ROD AT THE RECORDED GOVERNMENT OFFSET FROM THE SOUTHWEST CORNER OF SECTION 36, T4N, R3W.

(C) IN THE PLAN VIEW DRAWING BELOW, PROVIDE REFERENCE TIES TO AT LEAST 4 WITNESS MONUMENTS. WITNESS MONUMENTS SHALL BE MADE OF CONCRETE, NATURAL STONE, IRON, BEARING TREES OR ANY OTHER EQUALLY DURABLE MATERIAL. DEPICT THE RELEVANT MONUMENTS AND REFERENCE TIES WITH SUFFICIENT DETAIL TO ENABLE ACCURATE RELOCATION OF THE CORNER IF THE CORNER MONUMENT IS DISTURBED.

(D)

LEGEND:

- SET 1-1/4" x 30" IRON ROD
- FOUND COTTON GIN SPIKE
- 3/4" x 24" IRON ROD SET AS ACCESSORY
- 3/4" IRON ROD FOUND
- ⊞ "SURVEY MARKER" SIGN 34' +/- S OF MONUMENT



(E) DESCRIBE ANY MATERIAL DISCREPANCY BETWEEN THE LOCATION OF THE CORNER AS RESTORED OR REESTABLISHED AND THE LOCATION OF THAT CORNER AS PREVIOUSLY RESTORED OR REESTABLISHED BY DISTANCE AND DIRECTION. SHOW THE DISCREPANCY ON THE PLAN VIEW DRAWING UNDER (D), ABOVE. SHOW THE DISTANCES BETWEEN THE CORNER AS PREVIOUSLY RESTORED OR REESTABLISHED AND (1) THE CORNER AS RESTORED OR REESTABLISHED, AND (2) TO AT LEAST 2 OF THE WITNESS MONUMENTS SHOWN ON THE DRAWING IN (D) ABOVE.

N/A

(F) WAS THE CORNER RESTORED THROUGH ACCEPTANCE OF (1) AN OBLITERATED EVIDENCE LOCATION, OR (2) A FOUND PERPETUATED LOCATION?

(2) A FOUND PERPETUATED LOCATION.

(G&H) WAS THE CORNER REESTABLISHED THROUGH LOST CORNER PROPORTIONATE METHODS? IF SO, SHOW THE METHOD, INCLUDING THE DIRECTIONS AND DISTANCES TO OTHER PUBLIC LAND SURVEY CORNERS USED AS EVIDENCE OR USED FOR PROPORTIONING IN DETERMINING THE CORNER LOCATION.

N/A

CORNER HISTORY

THIS CORNER WAS NOT ESTABLISHED BY THE ORIGINAL GOVERNMENT SURVEY.

IN A SURVEY DATED 29 DECEMBER 1857, RECORDED IN VOLUME C, PAGE 176 OF SURVEY RECORDS, C. WHITNEY HAYDEN UTILIZED THE CORNER.

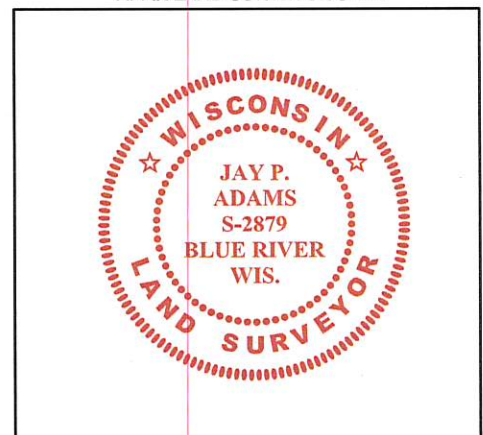
IN A PLAT OF SURVEY DATED 3 MAY 1996, LARRY AUSTIN SET A 3/4" X 24" IRON ROD WITH ALUMINUM CAP AT THE CORNER. THIS CORNER IS REFERENCED ON A TIE SHEET BY LARRY AUSTIN DATED 20 DECEMBER 1997.

IN A PLAT OF SURVEY DATED 30 JUNE 2004, LARRY AUSTIN REPORTED FINDING A #6 REBAR WITH CAP AT THE CORNER.

CORNER DETAIL



AFFIX LAND SURVEYOR SEAL



(I) I, JAY P. ADAMS, P.L.S. - 2879, CERTIFY THAT THE CORNER LOCATION SHOWN ON THIS RECORD WAS DETERMINED BY ME OR UNDER MY DIRECTION AND CONTROL AND THAT THIS U.S. PUBLIC LAND SURVEY MONUMENT RECORD IS CORRECT AND COMPLETE TO THE BEST OF MY KNOWLEDGE AND BELIEF.

SIGNATURE

5 DECEMBER 2017

DATE

U.S. PUBLIC LAND SURVEY MONUMENT RECORD - GRANT COUNTY, WI

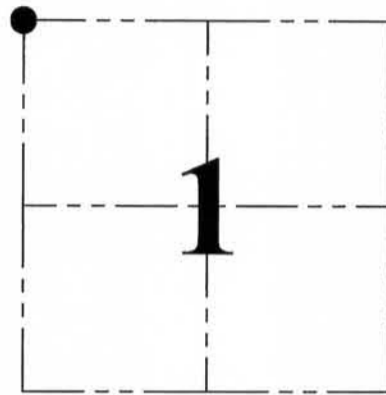
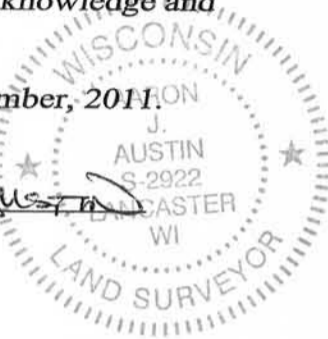
Section 1, Town 3 North Range 3 West, Town of Potosi

CERTIFICATE:

I, Aaron J. Austin, do hereby certify that the corner location on this record was determined by me and/or under my direct supervision and that this U.S. Public Land Survey Monument Record is correct and complete to the best of my knowledge and belief.

Dated this 9th day of December, 2011.

Aaron J. Austin
 Aaron J. Austin, S-2922



● = CORNER LOCATION

HISTORY OF CORNER ESTABLISHMENT:

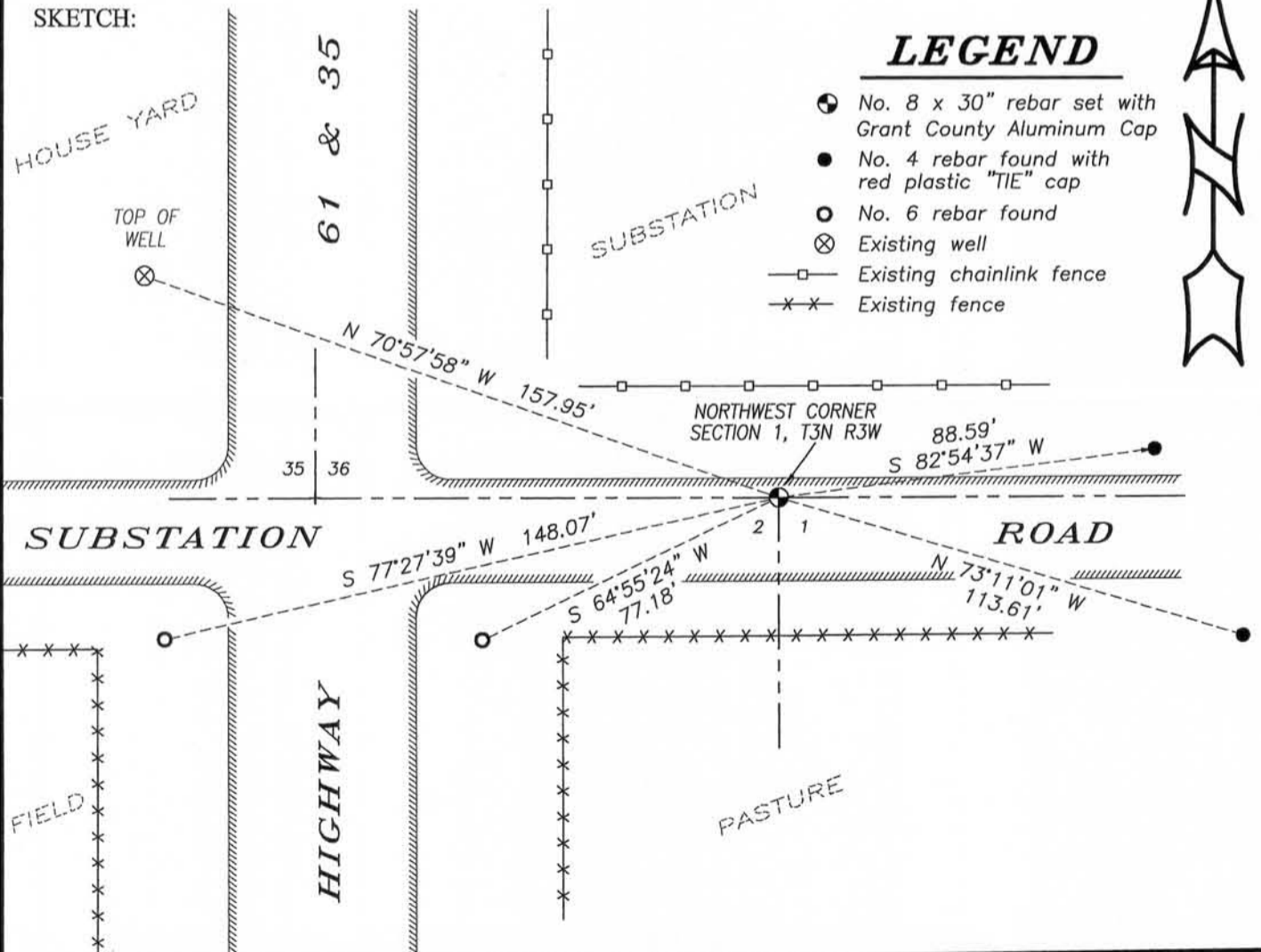
Corner was originally set in 1833 by Robert Clark.
 In 1852 John Everett tied to the corner and found the original.
 In 2000 Larry Austin reset the corner and filed a tie sheet.

DESCRIPTION OF CORNER EVIDENCE FOUND:

I reset the corner from found ties as established by Larry Austin.
 I verified this location by E.D.M. and G.P.S. methods.

DESCRIPTION OF CORNER AND WITNESS MONUMENTS, references and accessories used to perpetuate the original or re-established location of this corner. Witnesses to corner location Bobby Sedgwick & Shelby Blindert

SKETCH:



LEGEND

- No. 8 x 30" rebar set with Grant County Aluminum Cap
- No. 4 rebar found with red plastic "TIE" cap
- No. 6 rebar found
- ⊗ Existing well
- Existing chainlink fence
- x-x- Existing fence



SKETCH NOT TO SCALE



4211 HWY 81 E, LANCASTER, WI 53813
 PHONE: 608-723-6363 FAX: 608-723-6702

JOB NO: 11s246
 G:\T3NR2W\06
 H:\TIE\T3NR3W\03-B

FIELDBOOK: TDSR
 DRAWN BY: AJ AUSTIN
 CREW: BS-SB

DEC 14 2011

GRANT COUNTY CERTIFIED LAND CORNER

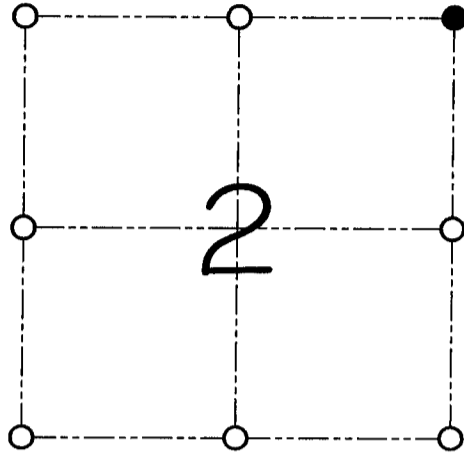
CORNER NUMBER 03

CERTIFICATE:

I, Larry L. Austin, do hereby certify that on the 7th day of February, 2000, I found no evidence of the Northeast corner of Section 2, Town 3 North, Range 3 West, of the 4th Principal Meridian, and I re-established said corner according to the Wisconsin statutes as shown and described hereon.

Dated this 21st day of February, 2000

Larry L. Austin
Larry L. Austin S-1903



● = CORNER LOCATION
**NORTHEAST CORNER OF
SECTION 2, T 3 N R 3 W
TOWN OF POTOSI**

HISTORY OF ORIGINAL CORNER ESTABLISHMENT:

Corner was originally set in 1833 by Robert Clark.
In 1852 John Everett tied to the corner and found the original.

DESCRIPTION OF CORNER EVIDENCE FOUND:

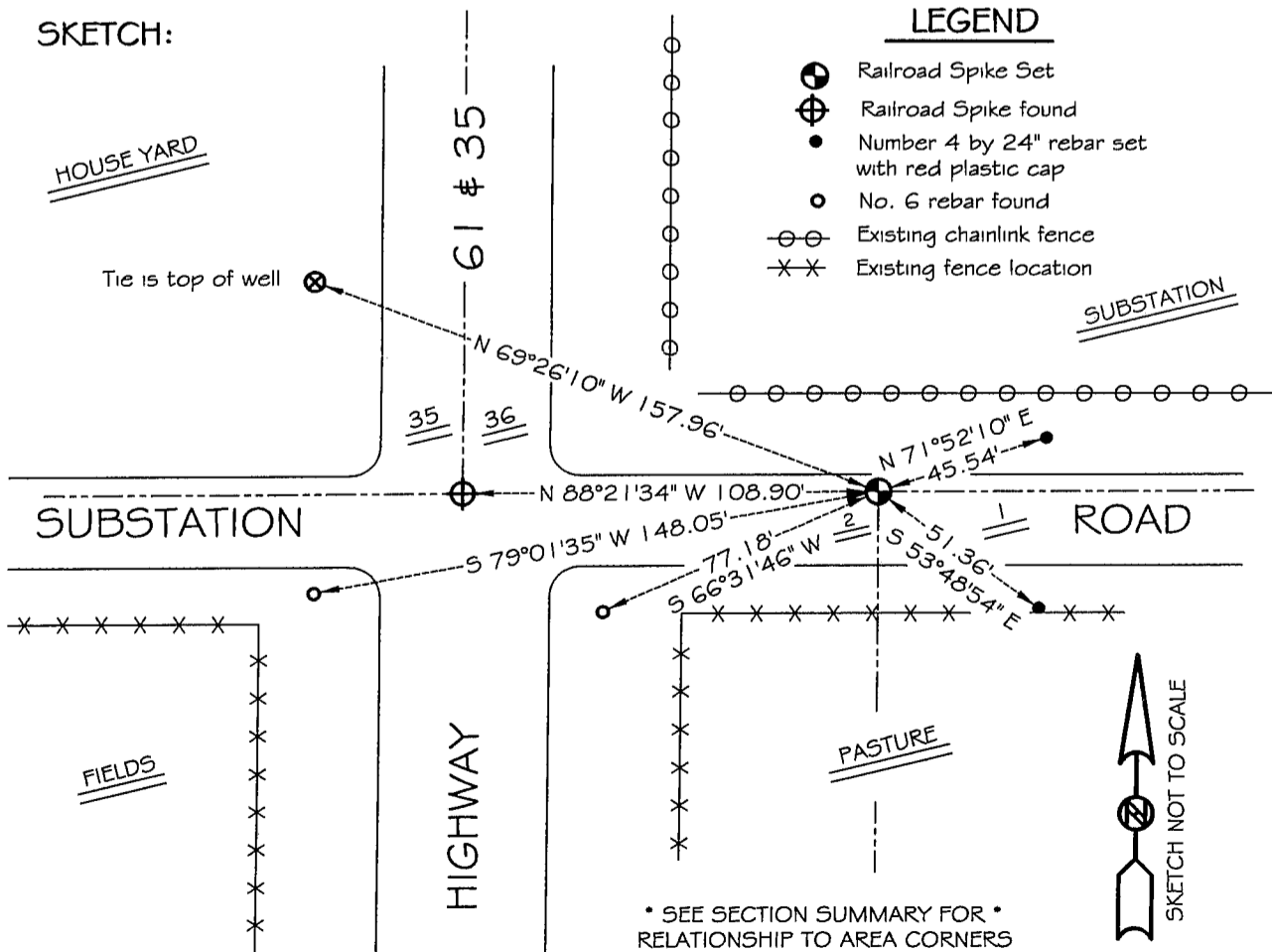
I found no evidence of the original corner. I reset the corner at the recorded offset from the Southwest corner of Section 36. Verified this location using E.D.M. and G.P.S. methods.

DESCRIPTION OF CORNER AND WITNESS MONUMENTS, references and accessories used to perpetuate the original or re-established location of this corner
WITNESS TO THE CORNER LOCATION: SHELBY BLINDERT & BOBBY SEDGWICK

SKETCH:

LEGEND

- (with cross) Railroad Spike Set
- ⊕ (with cross) Railroad Spike found
- (solid) Number 4 by 24" rebar set with red plastic cap
- (solid) No. 6 rebar found
- (with cross) Existing chainlink fence
- × × Existing fence location



* SEE SECTION SUMMARY FOR *
RELATIONSHIP TO AREA CORNERS