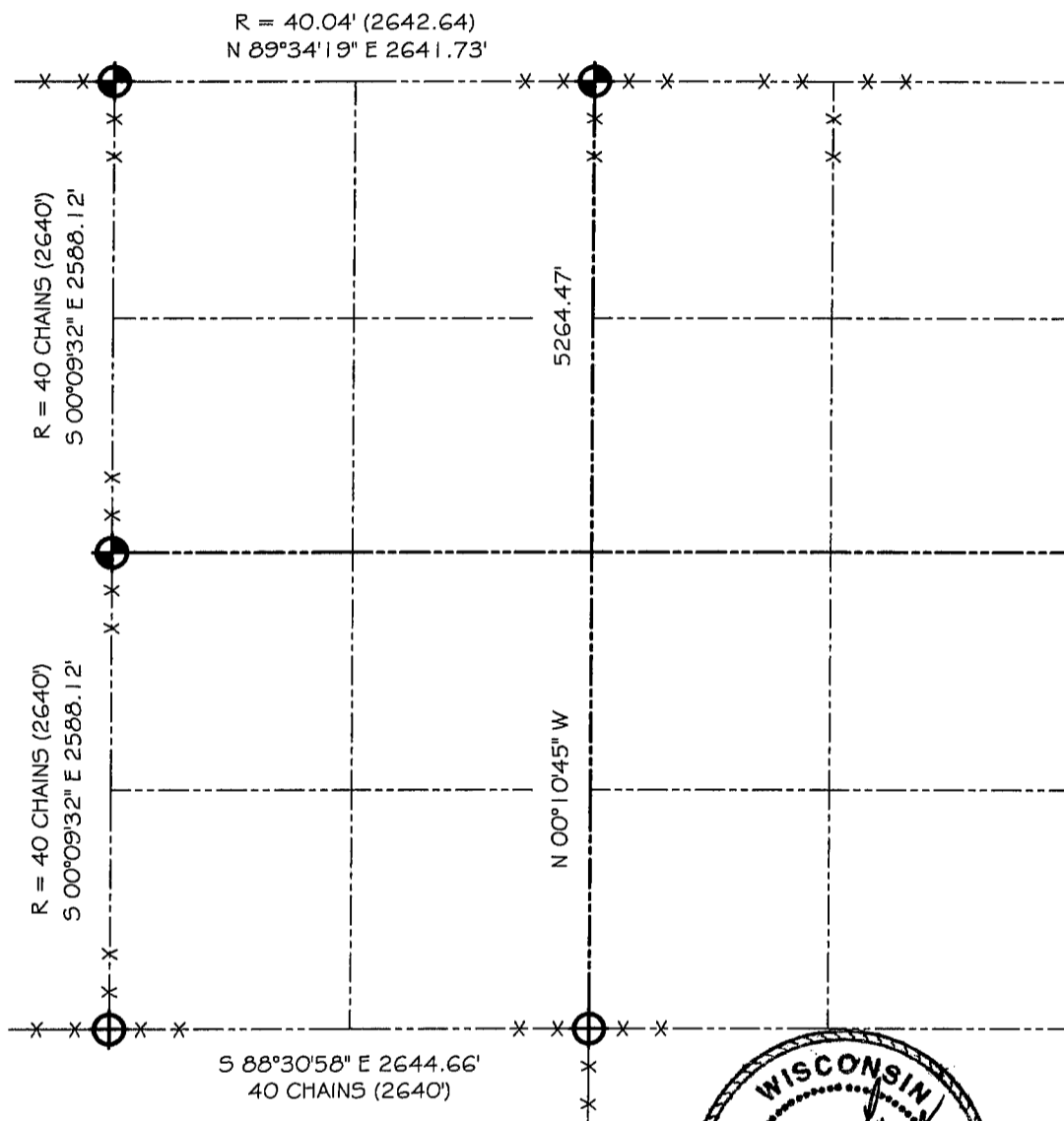


GRANT COUNTY

SECTION SUMMARY

$\frac{32}{SECTION} - \frac{3N}{TOWN} - \frac{2W}{RANGE}$



SEE TIE SHEET



LEGEND

- NO. 8 X 30" REBAR SET WITH GRANT COUNTY ALUMINUM CAP
- GRANT COUNTY ALUMINUM MONUMENT FOUND

NOTE:

Relationships of all section corners to other section corners shall be shown hereon by bearing and distance or grid coordinates
Show or describe bearing reference



BEARINGS REFERENCED TO THE NORTH LINE OF THE NORTHWEST QUARTER OF SECTION 32, WHICH IS ASSUMED TO BEAR N 89°34'19" E.