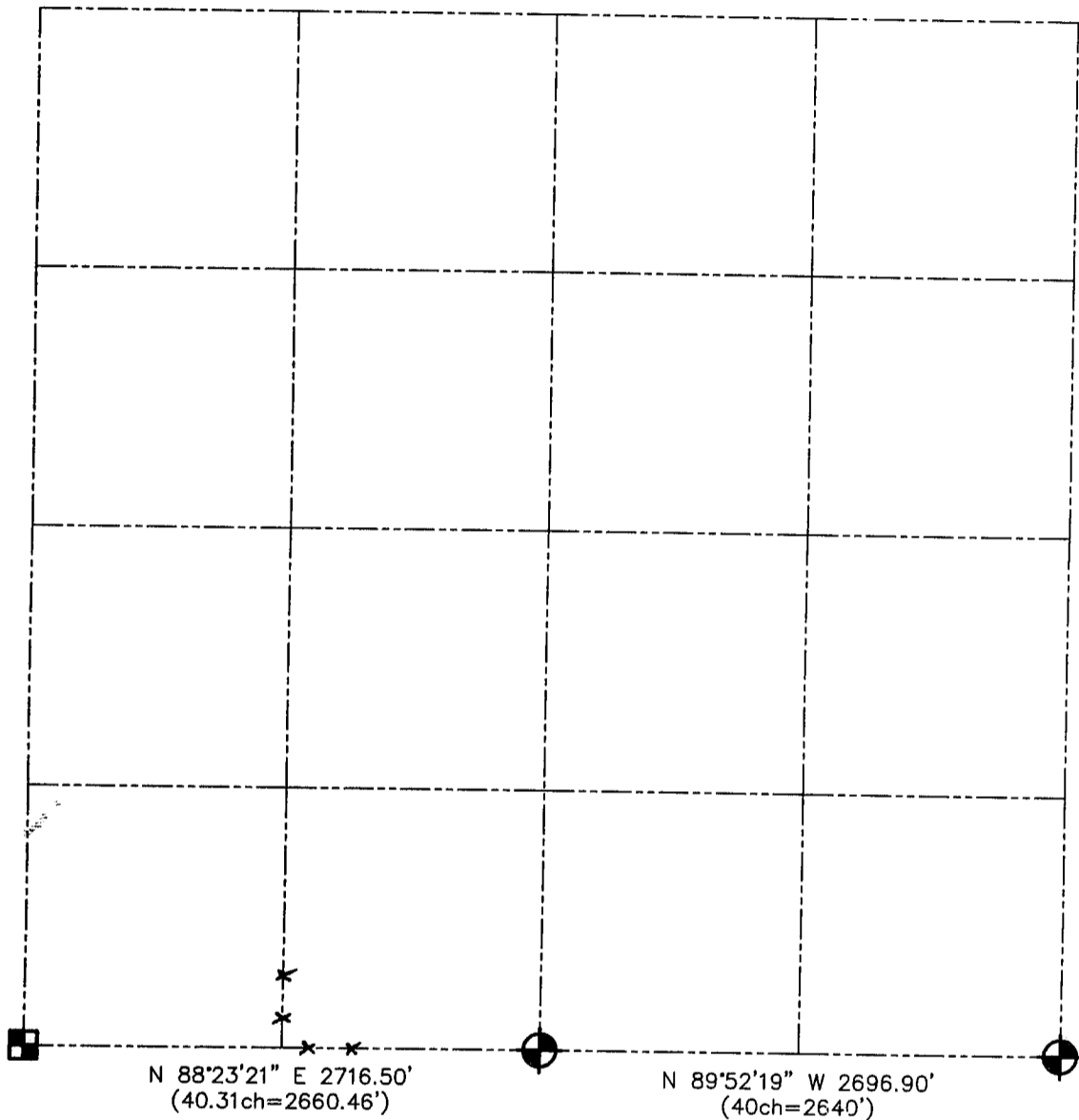




U.S. PUBLIC LAND SURVEY MONUMENT RECORD - GRANT COUNTY, WI
 Summary of Section 31, Town 3 North Range 2 West, Town of Harrison




LEGEND

-  NUMBER 8 x 30" REBAR SET WITH GRANT COUNTY ALUMINUM CAP
-  ALUMINUM MONUMENT FOUND WITH GRANT COUNTY ALUMINUM CAP

Relationship of all section corners to other section corners shall be shown hereon by bearing and distance or grid coordinates. Bearing reference shown below.



Dated this 7th day of November, 2001



Larry L. Austin, Surveyor

Bearings referenced to the South line of the Southeast Quarter of Section 31, which is assumed to bear N 89°52'19" W.

SKETCH NOT TO SCALE

AUSTIN ENGINEERING, LLC
 4211 HWY 81 EAST, LANCASTER, WI 53813
 PHONE 608-723-6363 FAX 608-723-6702

FIELDBOOK: SDR33, 2114
 G: \T3N2W\32
 C: \SWA\TIE\T3NR2W\31SUM

CREW: BS-SB-SA-BD
 DRAWN BY: SW AUSTIN
 APPROVED: LL AUSTIN