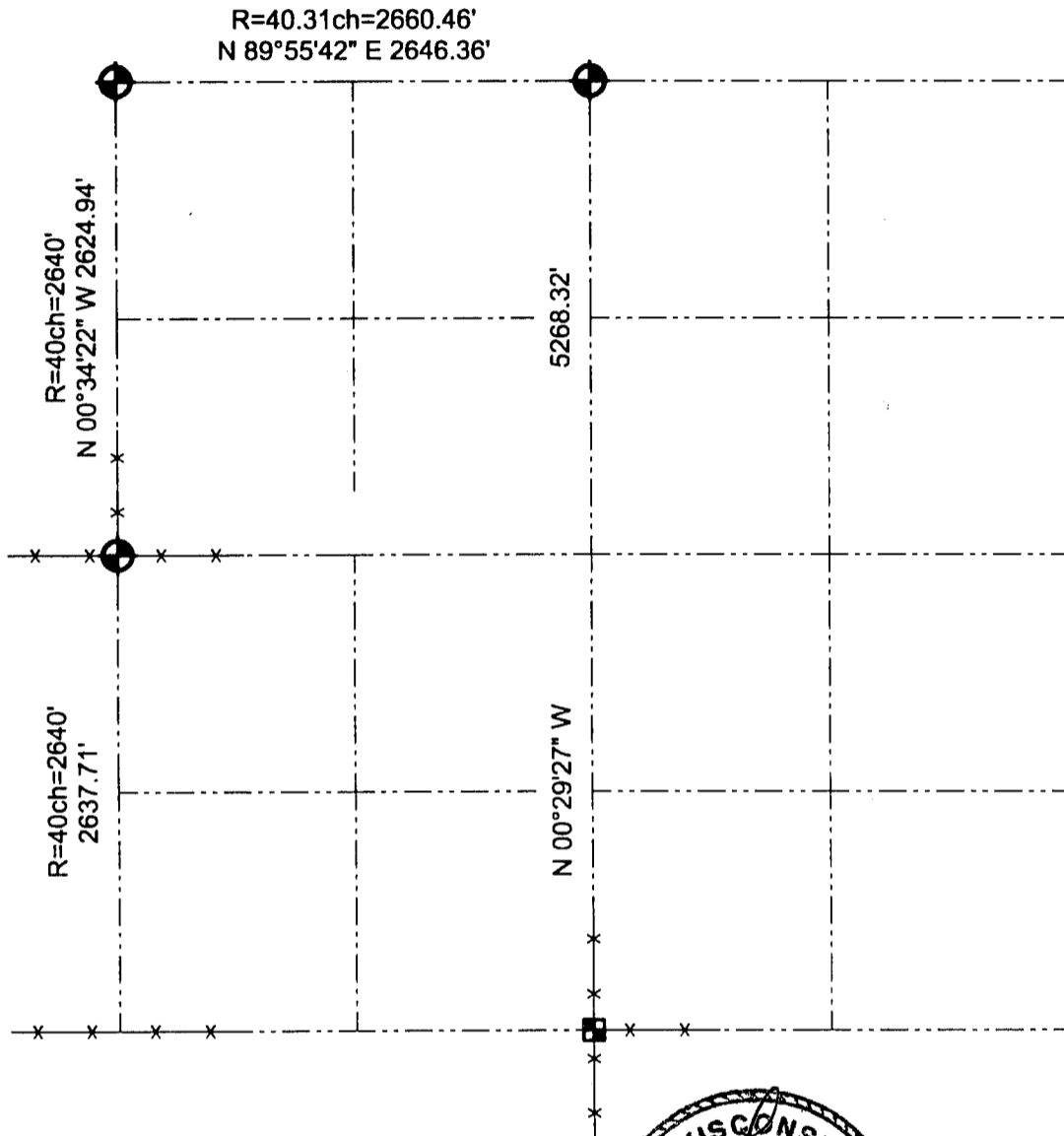





GRANT COUNTY SECTION SUMMARY

$\frac{21}{\text{SECTION}} - \frac{3N}{\text{TOWN}} - \frac{2W}{\text{RANGE}}$



LEGEND

-  Number 8 x 30" rebar set with Grant County Aluminum Cap
-  Number 8 rebar found with Grant County Aluminum Cap
-  Existing Stone found

NOTE:

Relationships of all section corners to other section corners shall be shown hereon by bearing and distance or grid coordinates.
~Bearing reference below~



Bearings referenced to the North line of the Northwest Quarter of Section 21, which is assumed to bear N 89°55'42" E.

AUSTIN ENGINEERING, LLC
4211 HWY 81 E, LANCASTER, WI 53813
PHONE 608-723-6383 FAX 608-723-6702

FIELDBOOK: SDR 8330, 2045
G:\T3NR2W\18
C:\SC14\SWA\TIE\T3NR2W\21SUM

DRAWN BY: SW AUSTIN
APPROVED: LL AUSTIN
CREW: BS - SB - SA - TF

JUN 14 2001