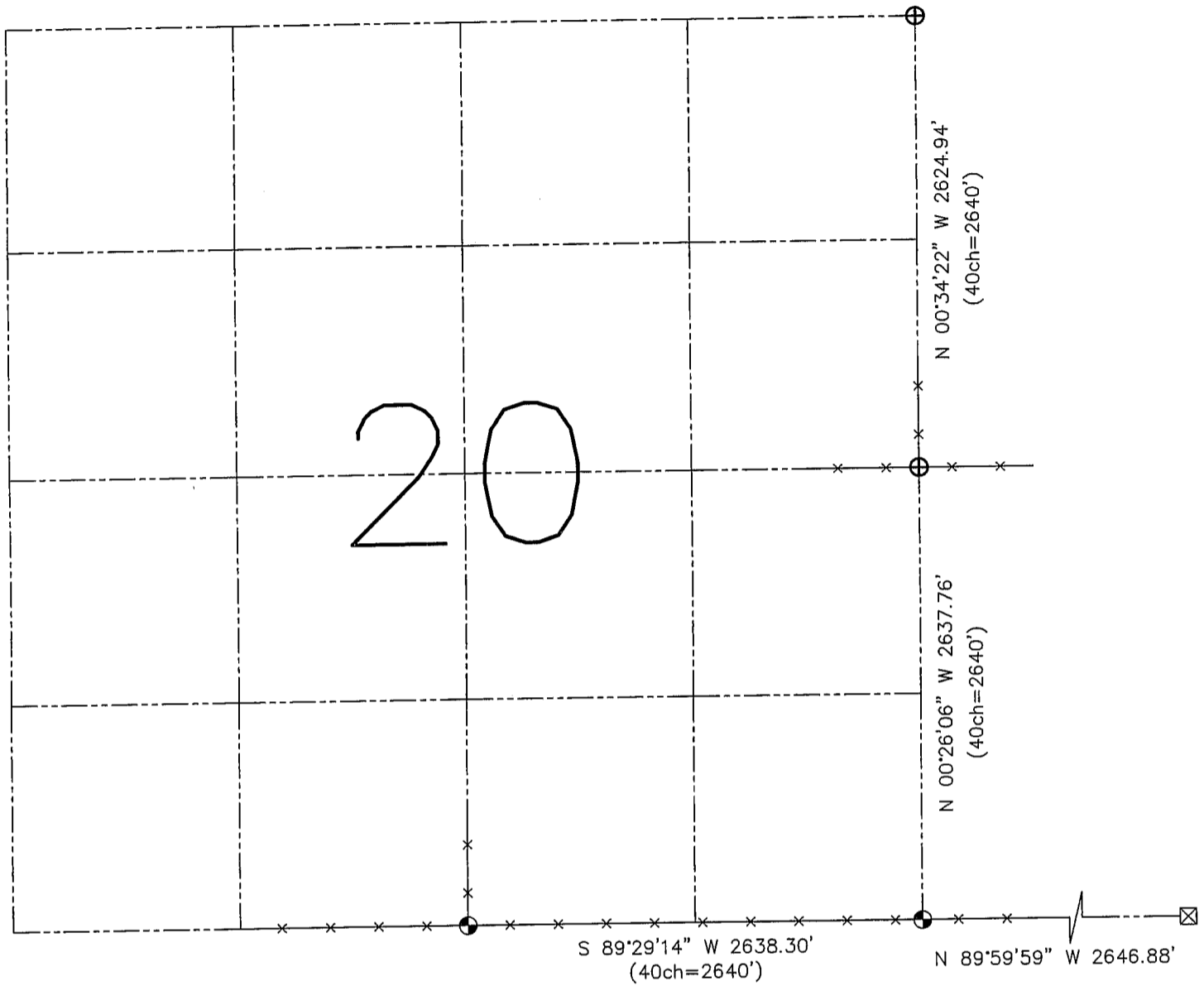


U.S. PUBLIC LAND SURVEY MONUMENT RECORD - GRANT COUNTY, WI

Summary of Section 20, Town 3 North, Range 2 West, Town of Harrison

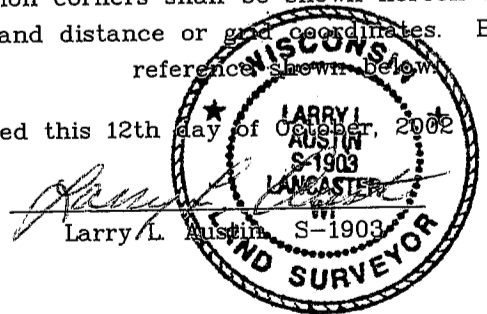


LEGEND

- ⊕ No. 8 rebar found with Grant County Aluminum Cap
- No. 8 x 30" rebar set with Grant County Aluminum Cap - wt=2.67#/l.f.
- () Recorded as
- x— Approximate location of existing fence
- ⊠ Stone monument found

Relationship of all section corners to other section corners shall be shown hereon by bearing and distance or grid coordinates. Bearing reference shown below.

Dated this 12th day of October, 2002



Larry L. Austin S-1903

Bearings referenced to the South line of the Southeast Quarter of this Section, which is assumed to bear S 89°29'14" W.

SKETCH NOT TO SCALE

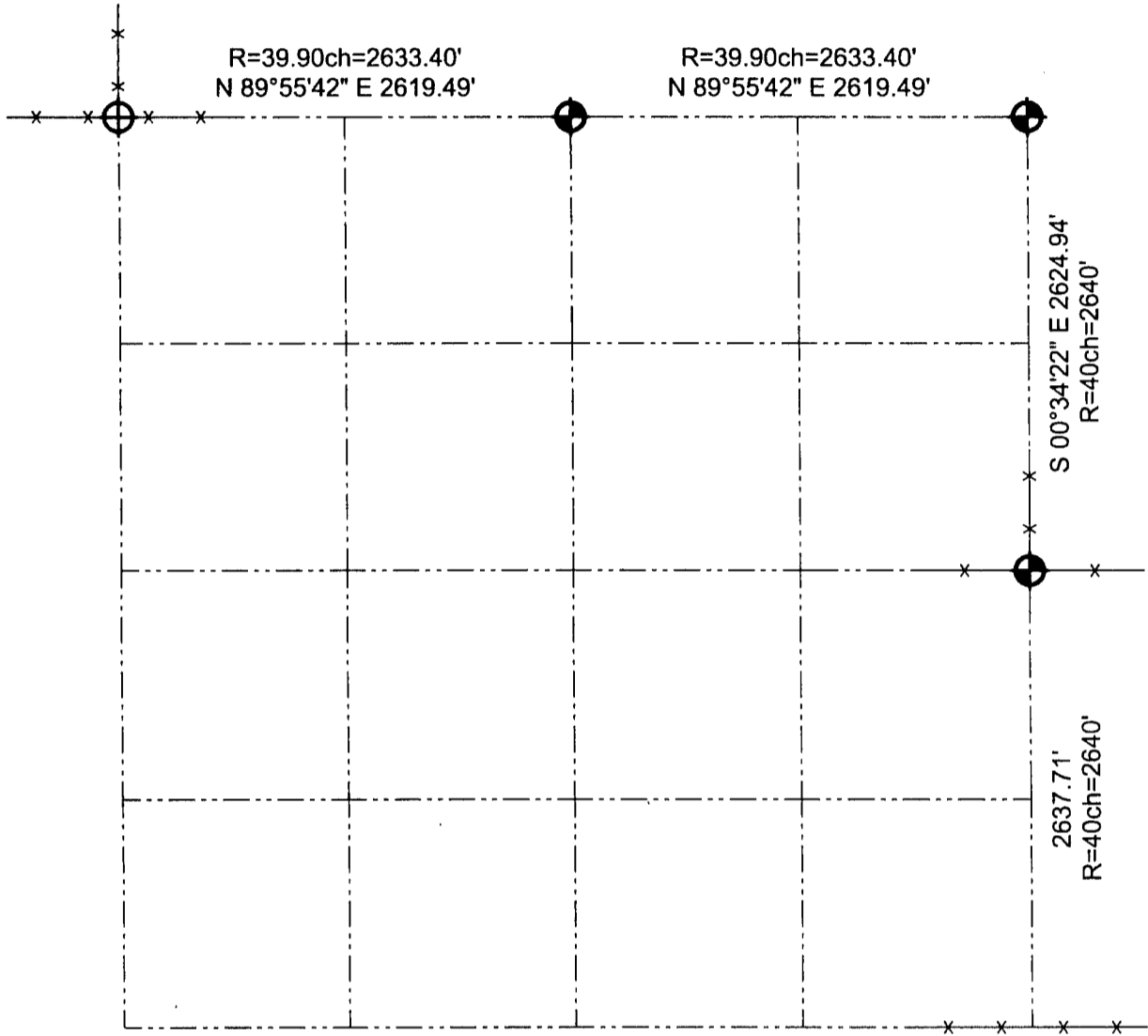
AUSTIN ENGINEERING, LLC
 4211 HWY 81 EAST, LANCASTER, WI 53813
 PHONE 608-723-6363 FAX 608-723-6702

FIELDBOOK: SDR33, 2232
 G:\T3NR2W\21
 C:\SWA\TIE\T3NR2W\20SUM



CREW: BS-SB-SA-BD
 DRAWN BY: SW AUSTIN
 APPROVED: LL AUSTIN

GRANT COUNTY SECTION SUMMARY

$\frac{20}{\text{SECTION}}$ - $\frac{3N}{\text{TOWN}}$ - $\frac{2W}{\text{RANGE}}$



LEGEND

-  Number 8 x 30" rebar set with Grant County Aluminum Cap
-  Number 8 rebar found with Grant County Aluminum Cap

NOTE:

Relationships of all section corners to other section corners shall be shown hereon by bearing and distance or grid coordinates.
 ~Bearing reference below~



Bearings referenced to the North line of the Northeast Quarter of Section 20, which is assumed to bear N 89°55'42" E.

AUSTIN ENGINEERING, LLC
 4211 HWY 81 E, LANCASTER, WI 53813
 PHONE 608-723-6363 FAX 608-723-6702

FIELDBOOK: SDR33, 2045
 G:\T3NR2W\18
 C:\SC14\SWA\TIE\T3NR2W\20SUM

DRAWN BY: SW AUSTIN
 APPROVED: LL AUSTIN
 CREW: BS - SB - SA - TF

JUN 14 2001