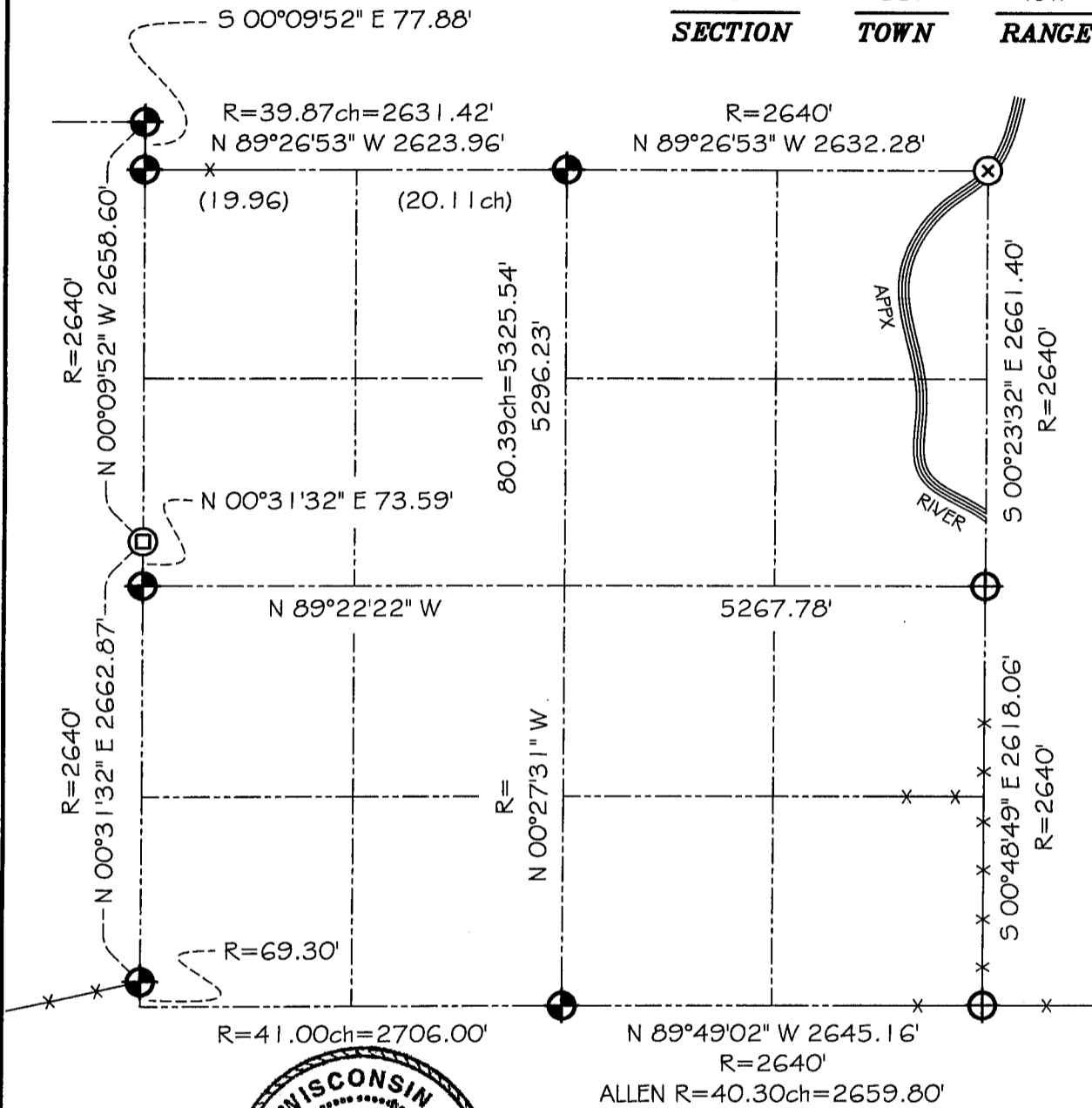






# GRANT COUNTY SECTION SUMMARY

18 - 3N - 2W  
**SECTION TOWN RANGE**



**LEGEND**

-  NO. 8 X 30" REBAR SET WITH GRANT COUNTY ALUMINUM CAP
-  NO. 8 X 30" REBAR FOUND WITH GRANT COUNTY ALUMINUM CAP
-  NO. 10 REBAR FOUND
-  NO MONUMENT SET (SEE TIE SHEET)

**NOTE:**

Relationships of all section corners to other section corners shall be shown hereon by bearing and distance or grid coordinates  
Show or describe bearing reference



BEARINGS REFERENCED TO THE EAST-WEST QUARTER LINE OF SECTION 18, WHICH IS ASSUMED TO BEAR N 89°22'22" W.