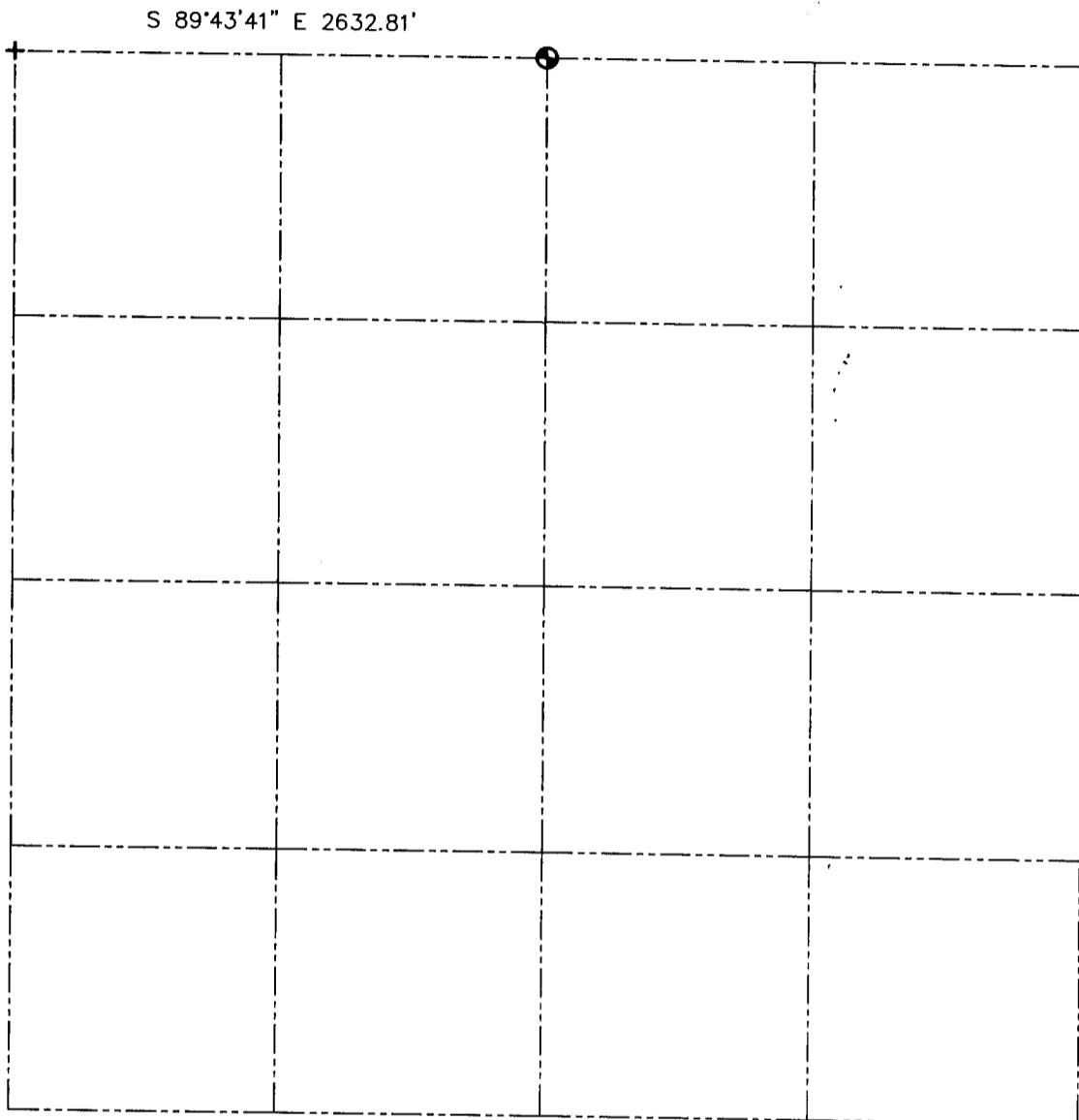


U.S. PUBLIC LAND SURVEY MONUMENT RECORD - GRANT COUNTY, WI
 Summary of Section 17, Town 3 North Range 2 West, Town of Harrison



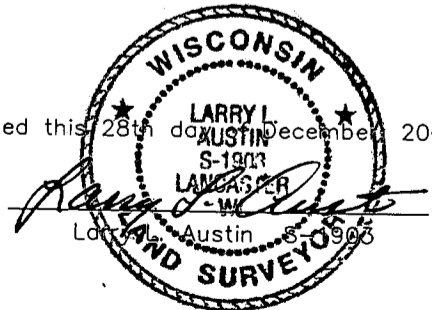
LEGEND

- ⊙ No. 8 x 30' rebar set with Grant County Aluminum Cap - wt=2.67#/l.f.
- + No monument set - (see tiesheet) corner falls in river



Relationship of all section corners to other section corners shall be shown hereon by bearing and distance or grid coordinates. Bearing reference shown below.

Dated this 28th day of December, 2001



ALL BEARINGS REFERENCED TO THE GRANT COUNTY COORDINATE SYSTEM.

SKETCH NOT TO SCALE

AUSTIN ENGINEERING, LLC

4211 HWY 81 EAST, LANCASTER, WI 53813
 PHONE 608-723-6363 FAX 608-723-6702

FIELDBOOK: SDR33, 9717, 2045
 G: \T3NR2W\18
 C: \SWA\TIE\T3NR2W\17SUM

CREW: BS-SB-SA-BD
 DRAWN BY: SW AUSTIN
 APPROVED: LL AUSTIN