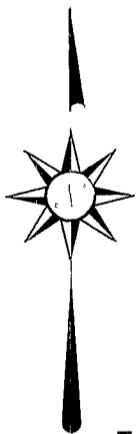
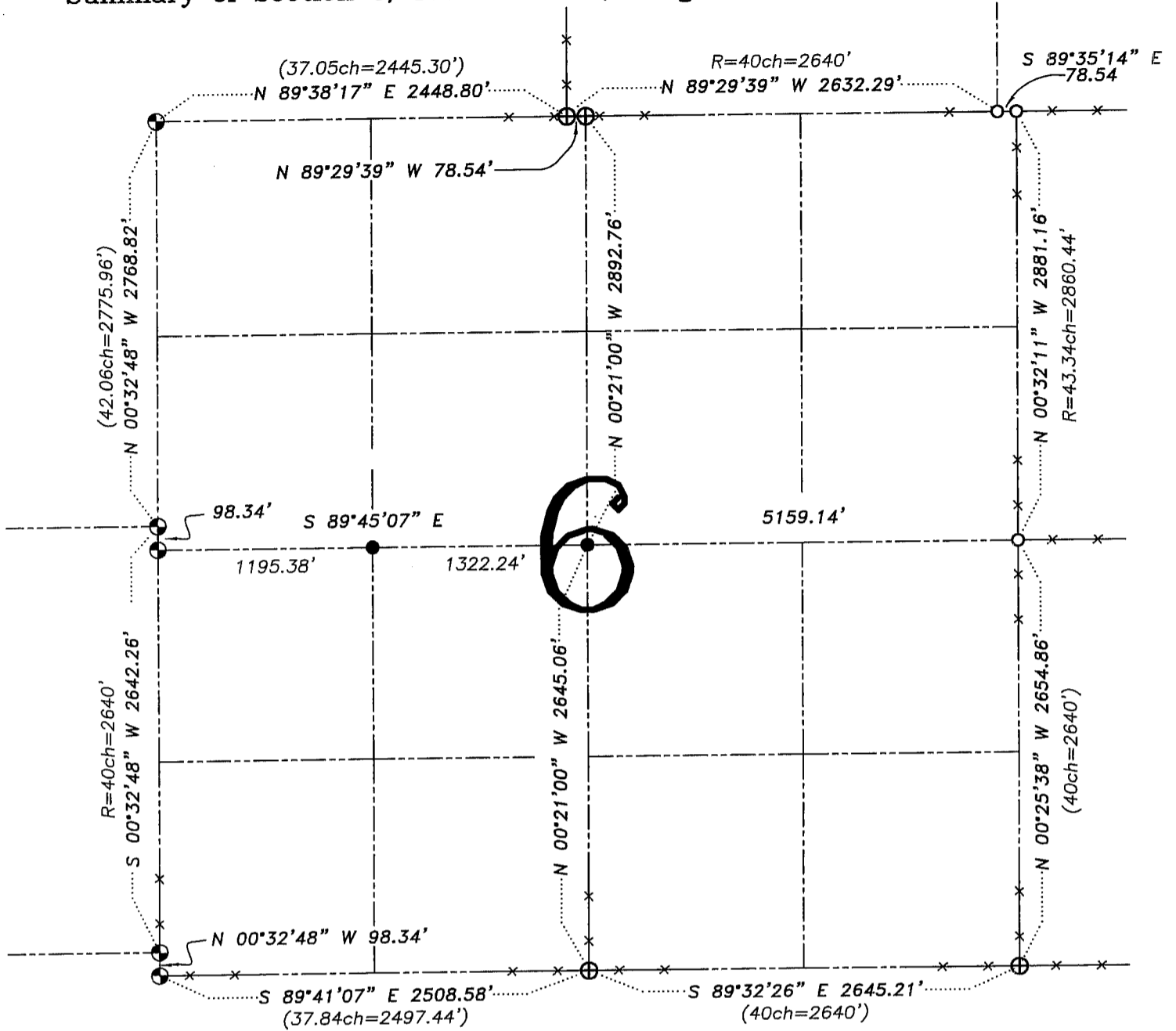


U.S. PUBLIC LAND SURVEY MONUMENT RECORD – GRANT COUNTY, WI

Summary of Section 6, Town 3 North, Range 2 West, Town of Harrison



LEGEND

- ⊕ No. 8 rebar found with Grant County Aluminum Cap
- ⊙ No. 8 x 30" rebar set with Grant County Aluminum Cap – wt=2.67#/l.f.
- No. 6 rebar found
- No. 6 x 24" rebar set with cap – wt=1.50 #/l.f.
- x— Approximate location of existing fence



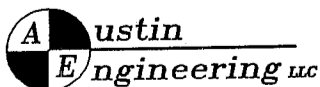
Relationship of all section corners to other section corners shall be shown hereon by bearing and distance or grid coordinates. Bearing reference shown below.

Dated this 21st day of February, 2005

Larry L. Austin
Larry L. Austin S-1903

Bearings referenced to the South line of the SW 1/4 of Section 6, which is assumed to bear S 89°41'07" E.

SKETCH NOT TO SCALE



4211 HWY 81 E, LANCASTER, WI 53813
PHONE 608-723-6363 FAX 608-723-6702

JOB NUMBER: 04S318
FIELDBOOK: TDSR,2417
G:\T3NR2W\06
H:\TIE\T3NR2W\6SUM

DRAWN BY: BJ HAZEN
APPROVED: LL AUSTIN