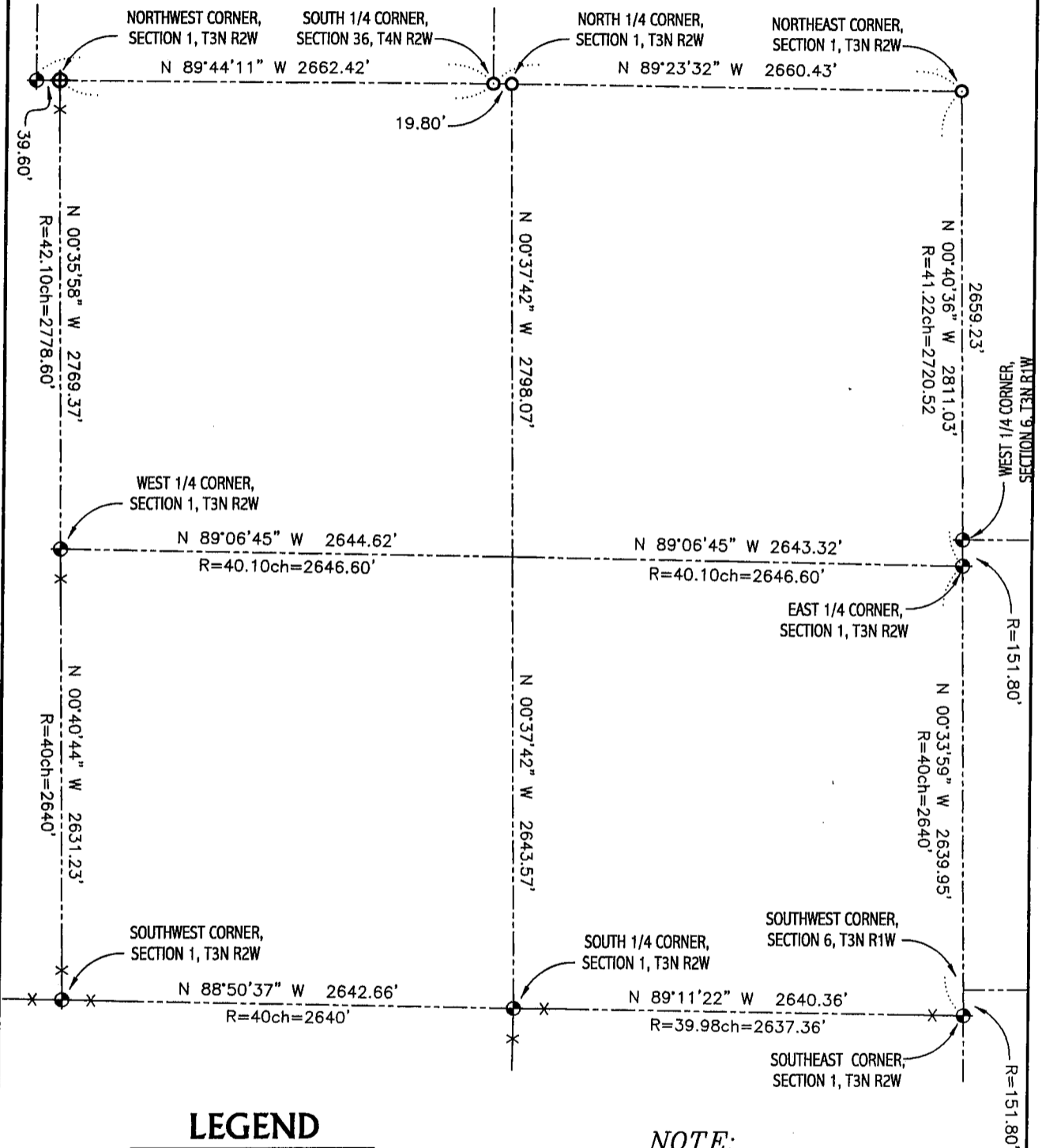


GRANT COUNTY SECTION SUMMARY

1 - 3N - 2W
SECTION TOWN RANGE

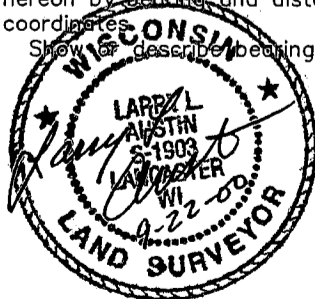


LEGEND

- ⊕ EXISTING ALUMINUM MONUMENT
- EXISTING NO. 6 REBAR
- ⊕ NO. 8 x 30" REBAR SET WITH GRANT COUNTY ALUMINUM CAP WT=2.67 #/L.F.
- NO. 6 x 24" REBAR SET WITH CAP WT=1.50 #/L.F.

NOTE:

Relationships of all section corners to other section corners shall be shown hereon by bearing and distance or grid coordinates.
Show or describe bearing reference



Bearings referenced to the East line of the NE 1/4 of Section 1
which is assumed to bear N 00° 40' 36" W.