

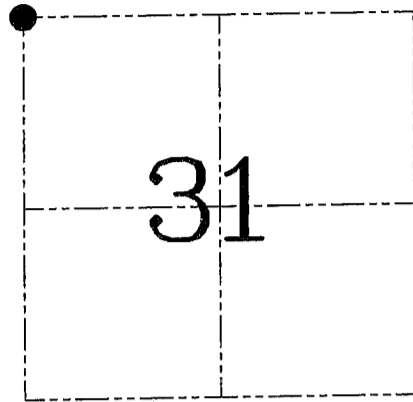
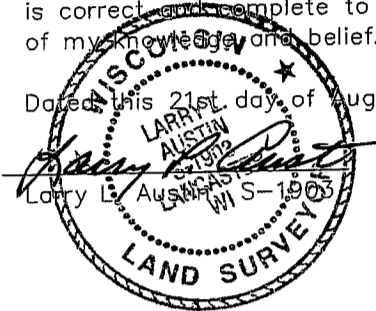
U.S. PUBLIC LAND SURVEY MONUMENT RECORD – GRANT COUNTY, WI

Section 31, Town 3 North Range 2 West, Town of Harrison

CERTIFICATE

I, Larry L. Austin, do hereby certify that the corner location on this record was determined by me and/or under my direct supervision and that this U.S. public land survey monument record is correct and complete to the best of my knowledge and belief.

Dated this 21st day of August, 2003



● = CORNER LOCATION

HISTORY OF CORNER ESTABLISHMENT

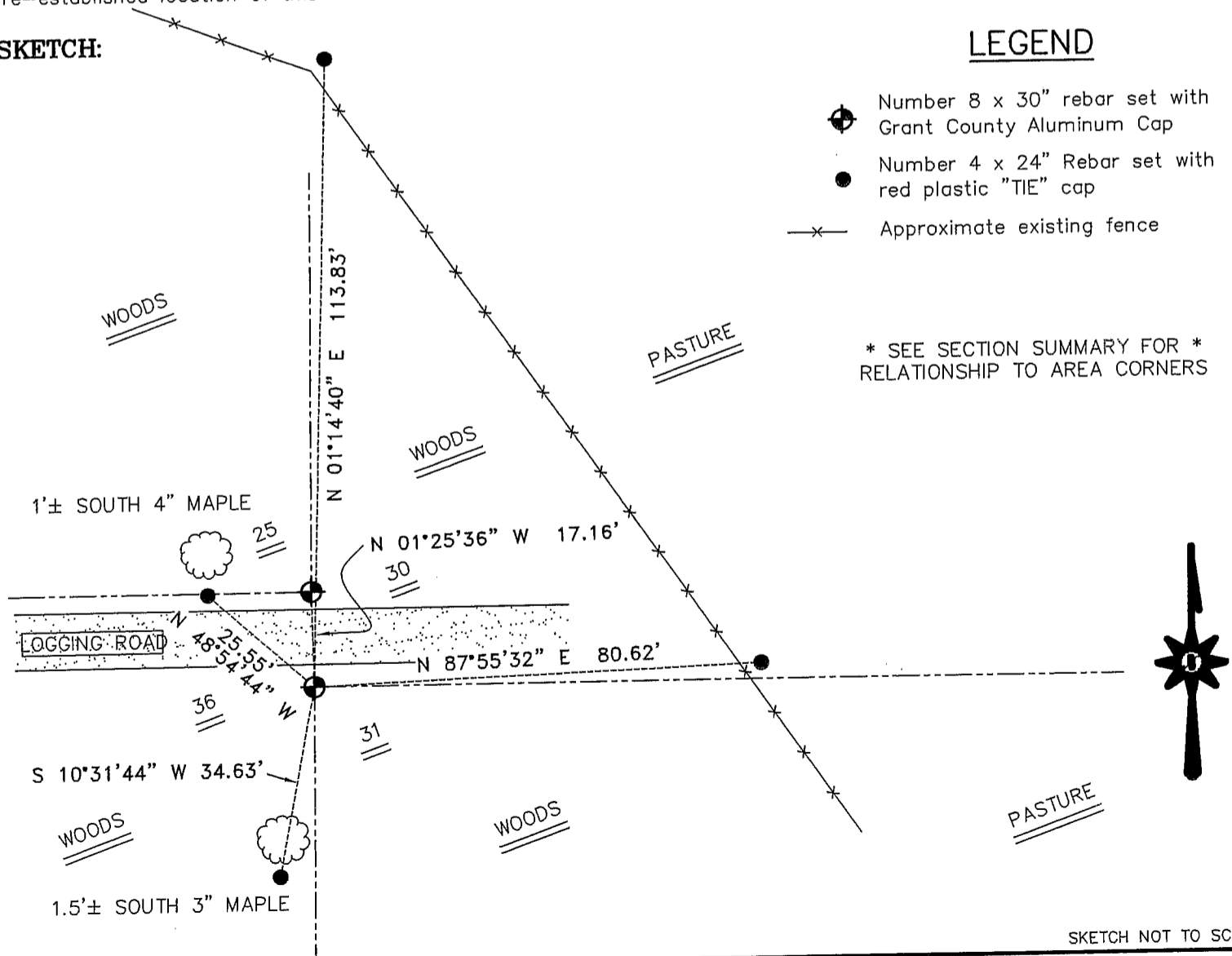
Corner was originally set in 1833 by Robert Clark. In 1875 Barber tied to the corner and tied new bearing trees.

DESCRIPTION OF CORNER EVIDENCE FOUND

I was unable to locate any evidence of either corner location. I reset the corner at the recorded offset from the Northeast corner of Section 36. Verified it's location using EDM & GPS methods.

DESCRIPTION OF CORNER AND WITNESS MONUMENTS, references and accessories used to perpetuate the original or re-established location of this corner. Witnesses to corner location Bobby Sedgwick & Shane Austin & Brad Digman

SKETCH:



LEGEND

- Number 8 x 30" rebar set with Grant County Aluminum Cap
- Number 4 x 24" Rebar set with red plastic "TIE" cap
- x— Approximate existing fence

* SEE SECTION SUMMARY FOR *
RELATIONSHIP TO AREA CORNERS



SKETCH NOT TO SCALE

AUSTIN ENGINEERING, LLC

4211 HWY 81 EAST, LANCASTER, WI 53813
PHONE 608-723-6363 FAX 608-723-6702

FIELDBOOK: TDS RNGR, 2230
G: \T3NR3W\36
H: \TIE\T3NR2W\113
JOB NUMBER 03S197

DRAWN BY: SW AUSTIN
APPROVED: LL AUSTIN

CORNER NUMBER 113