

U.S. PUBLIC LAND SURVEY MONUMENT RECORD - GRANT COUNTY, WI

Section 36, Town 3 North Range 2 West, Town of Harrison (a)

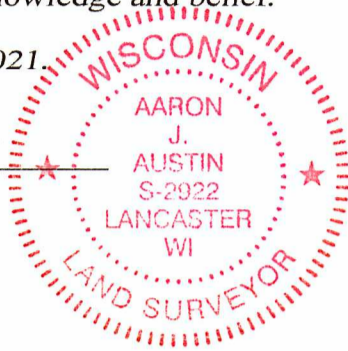
NOTE: This form is intended and designed to fulfill all requirements of the Wisconsin Administrative Code Chapter A-E 7.08, U.S. Public Land Survey Monument Record (3) (a) (b) (c) (d) (e) (f) (g) (h) (i).

CERTIFICATE: (i)

I, Aaron J. Austin, Wisconsin Professional Land Surveyor, do hereby certify that the corner location on this record was determined by me and/or under my direct supervision and that this U.S. Public Land Survey Monument Record is correct and complete to the best of my knowledge and belief.

Dated this 3rd day of May, 2021.

Aaron J. Austin, S-2922



⊕ = CORNER LOCATION

Grant County Coordinates: NAD 83 (2011) Northing: 468,472.34 Easting: 861,190.30

HISTORY OF CORNER ESTABLISHMENT:

Original corner was set in 1832 by Robert Clark. Overton found the Original corner on a Survey dated 7/2/1855 in Survey Book B, Page 406.

DESCRIPTION OF CORNER EVIDENCE FOUND: (b) (f) (g) (h)

I set the a 1 1/4" Rebar in an East-West fence at brace posts marking the change in fence. This location coincides with the recorded dimensions from the Overton Survey of 19.98 Chains to the Southwest corner Southeast 1/4 of the Southwest 1/4 of Section 25 (which falls in the Little Platte River). The dimensions were Recorded on a previous Survey by Overton filed in Book B, Page 406. The overall dimension of 39.96 chains fits well with the measured distance to the Northwest corner of Section 36. I set four witness corners after I verified the Monument's location with G.P.S. and E.D.M. methods.

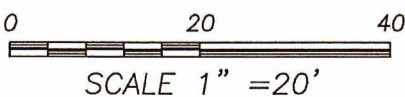
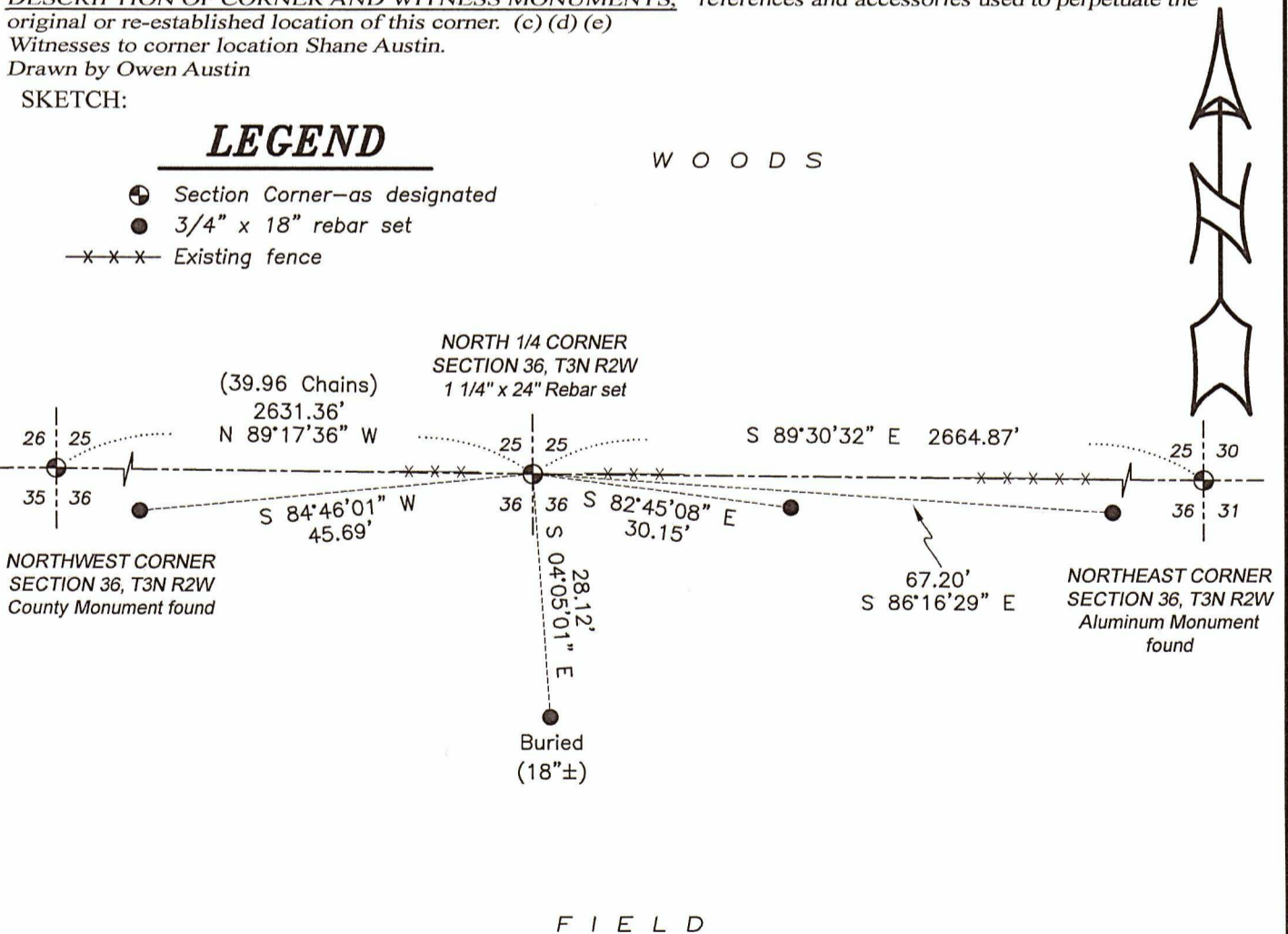
DESCRIPTION OF CORNER AND WITNESS MONUMENTS, references and accessories used to perpetuate the original or re-established location of this corner. (c) (d) (e)

Witnesses to corner location Shane Austin. Drawn by Owen Austin

SKETCH:

LEGEND

- ⊕ Section Corner—as designated
● 3/4" x 18" rebar set
-x-x-x Existing fence



SCALE 1" = 20'