

# GRANT COUNTY CERTIFIED LAND CORNER

CORNER NUMBER 101

**CERTIFICATE:**

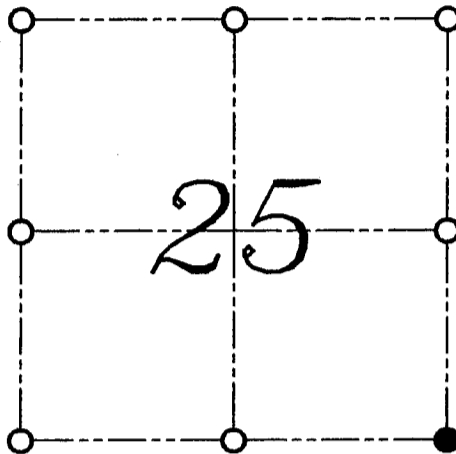
I, LARRY L. AUSTIN, DO HEREBY CERTIFY THAT ON THIRTIETH DAY OF APRIL, 1999, I FOUND MONUMENTED EVIDENCE OF THE SOUTHEAST CORNER SECTION 25, TOWN 3 NORTH, RANGE 2 WEST, OF THE FOURTH PRINCIPAL MERIDIAN, AND I RE-ESTABLISHED SAID CORNER ACCORDING TO THE WISCONSIN STATUTES AS SHOWN AND DESCRIBED HEREON.

DATED THIS TWENTY-SECOND DAY OF MAY, 1999

*Larry L. Austin*  
LARRY L. AUSTIN S-1903



SEAL



● = CORNER LOCATION

SOUTHEAST CORNER OF  
SECTION 25, T 3 N R 2 W  
TOWN OF HARRISON

**HISTORY OF ORIGINAL CORNER ESTABLISHMENT:**

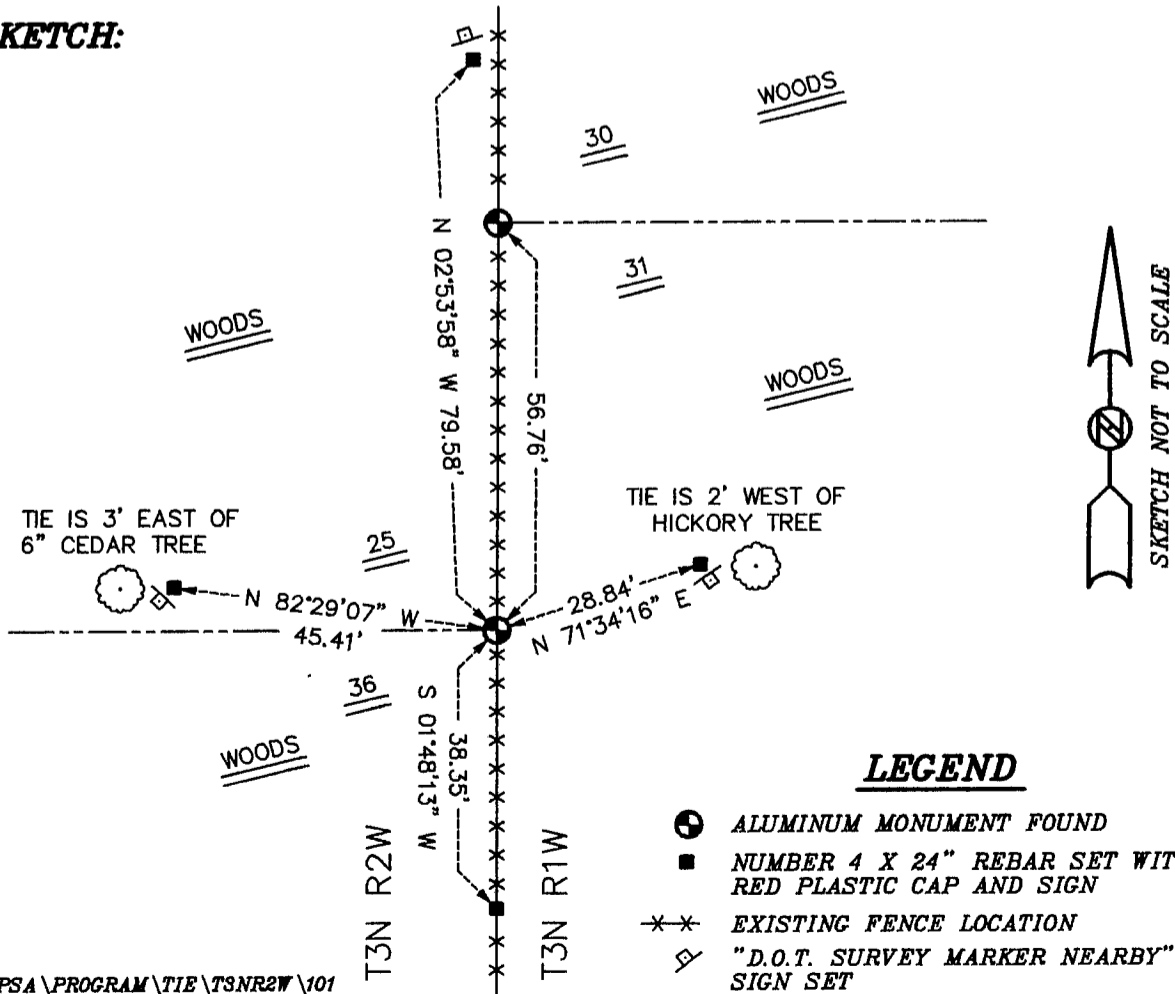
CORNER WAS SET IN 1832 BY LUCIUS LYON.  
I SET THE CORNER IN 1992.

**DESCRIPTION OF CORNER EVIDENCE FOUND:**

I ACCEPTED THIS LOCATION AFTER AN E.D.M. AND G.P.S. TRAVERSE OF THE AREA.

**DESCRIPTION OF CORNER AND WITNESS MONUMENTS, REFERENCES AND ACCESSORIES USED TO PERPETUATE THE ORIGINAL OR RE-ESTABLISHED LOCATION OF THIS CORNER:**  
WITNESS TO THE CORNER LOCATION: BOBBY SEDGWICK ; SHELBY BLINDERT

**SKETCH:**



**LEGEND**

- ALUMINUM MONUMENT FOUND
- NUMBER 4 X 24" REBAR SET WITH RED PLASTIC CAP AND SIGN
- \* \* \* EXISTING FENCE LOCATION
- ⊠ "D.O.T. SURVEY MARKER NEARBY" SIGN SET