

U.S. PUBLIC LAND SURVEY MONUMENT RECORD - GRANT COUNTY, WI

Section 27, Town 3 North Range 2 West, Town of Harrison (a)

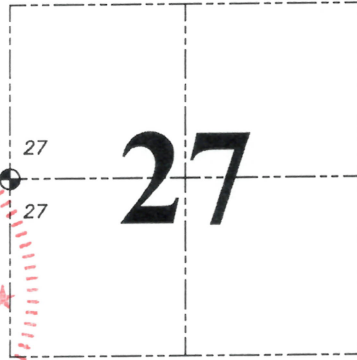
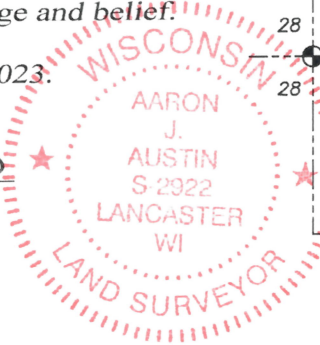
NOTE: This form is intended and designed to fulfill all requirements of the Wisconsin Administrative Code Chapter A-E 7.08, U.S. Public Land Survey Monument Record (3) (a) (b) (c) (d) (e) (f) (g) (h) (i).

CERTIFICATE: (i)

I, Aaron J. Austin, Wisconsin Professional Land Surveyor, do hereby certify that the corner location on this record was determined by me and/or under my direct supervision and that this U.S. Public Land Survey Monument Record is correct and complete to the best of my knowledge and belief.

Dated this 30th day of November, 2023.

Aaron J. Austin
Aaron J. Austin, S-2922



● = CORNER LOCATION

Grant County Coordinates:
NAD 83 (2011)
Northing: 471,118.34
Easting: 847,947.81

HISTORY OF CORNER ESTABLISHMENT:

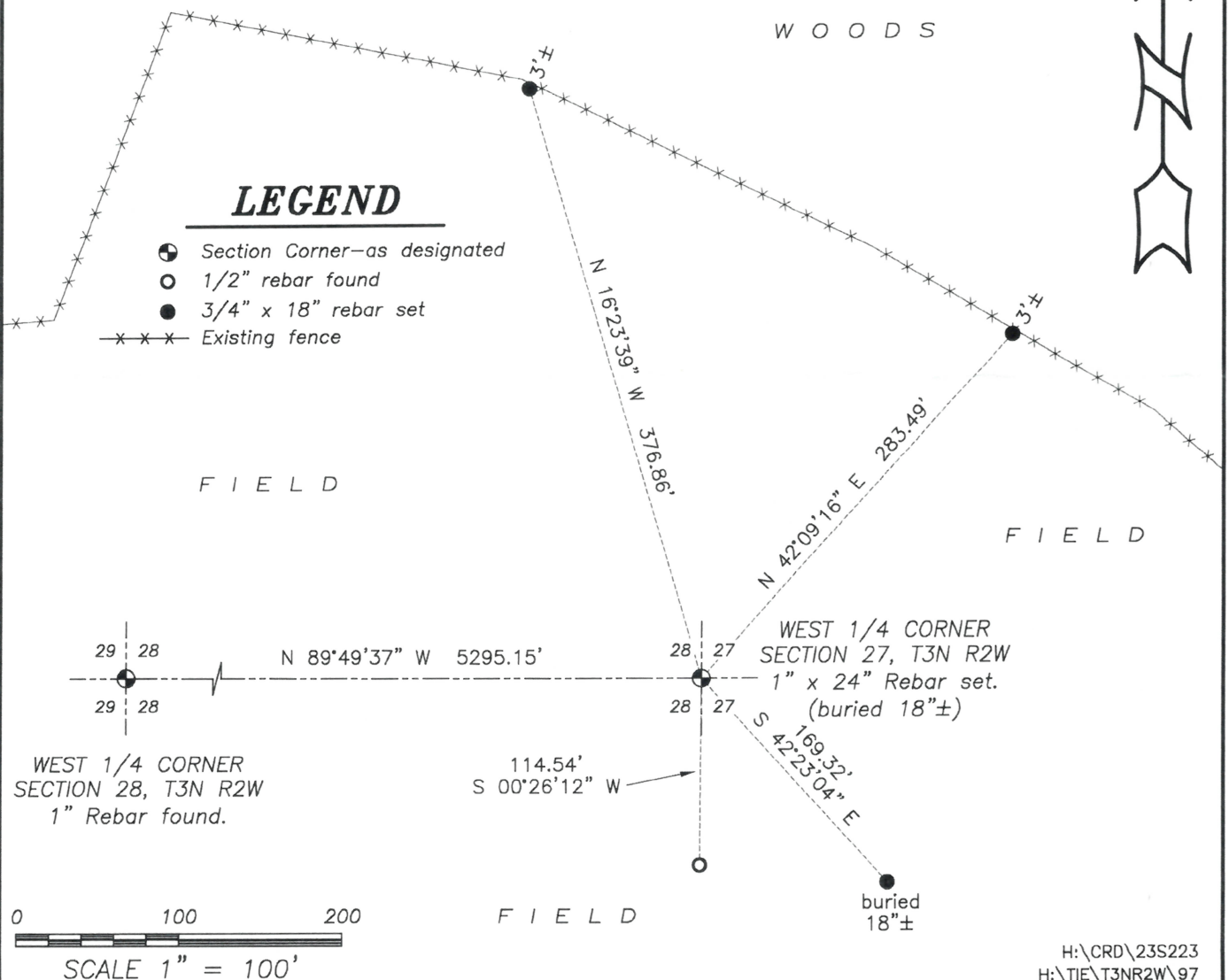
Original corner was set in 1833 by Robert Clark.
Larry Austin set a 3/4" Rebar and prepared a Survey Monument Record dated 12-31-1997.

DESCRIPTION OF CORNER EVIDENCE FOUND: (b) (f) (g) (h)

There was no evidence of the 3/4" Rebar Larry set. I set a 1" x 24" Rebar from the one witness corner and a recorded distance from the West 1/4 of Section 28 on a Survey filed in Book 20, Page 53. I set three additional witness corners after I verified the Monument's location with G.P.S. and E.D.M. methods.

DESCRIPTION OF CORNER AND WITNESS MONUMENTS, references and accessories used to perpetuate the original or re-established location of this corner. (c) (d) (e)
Witnesses to corner location Owen Austin, Tanner Austin.
Drawn by: Owen Austin.

SKETCH:

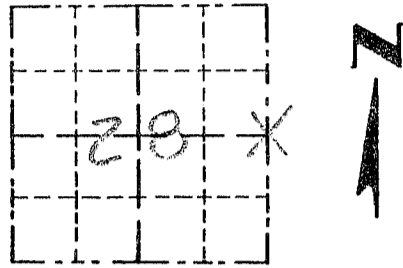


Survey Monument Record

TYPE OF MONUMENT 3/4" X 24" IRON BAR
SET

CORNER NO. 97
 SECTION 28
 TOWN 3N
 RANGE 2W

FIELD BOOK: 97-04(A)
 PAGE (3)



LOCATION
 (Indicated by "X")

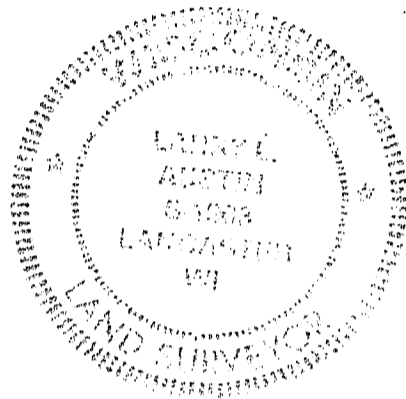
BASIS FOR MONUMENT LOCATION

(Use reverse side if necessary)

Show info such as: History of corner, with reference to Vol. and pg., dates, surveyor; exact description of monument replaced; if location computed, by taped or EDM traverse; landowner, remarks, etc.

CORNER SET IN 1833 BY ROBERT CLARK; OVERTON, Co. SURVEYOR WAS AT THE CORNER IN 1855. CORNER WAS SET AT AN OCCUPIED FENCE CORNER, VERIFIED THIS LOCATION USING EDM METHODS.

SEAL:



CERTIFIED CORRECT

Larry L. Adstun
 Registered Land Surveyor

DATE: 12/31/97

TIE SKETCH

Show at least three (3) ties and monument

