

**U.S. PUBLIC LAND SURVEY MONUMENT RECORD - GRANT COUNTY, WI**

Section 30, Town 3 North Range 2 West, Town of Harrison (a)

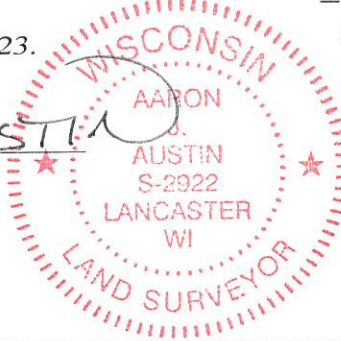
NOTE: This form is intended and designed to fulfill all requirements of the Wisconsin Administrative Code Chapter A-E 7.08, U.S. Public Land Survey Monument Record (3) (a) (b) (c) (d) (e) (f) (g) (h) (i).

**CERTIFICATE: (i)**

I, Aaron J. Austin, Wisconsin Professional Land Surveyor, do hereby certify that the corner location on this record was determined by me and/or under my direct supervision and that this U.S. Public Land Survey Monument Record is correct and complete to the best of my knowledge and belief.

Dated this 14th day of July, 2023.

*Aaron J. Austin*  
 Aaron J. Austin, S-2922



● = CORNER LOCATION

Grant County Coordinates:  
 NAD 83 (2011)  
 Northing: 471,151.44  
 Easting: 832,017.99

**HISTORY OF CORNER ESTABLISHMENT:**

Original corner was set in 1832 by Lucius Lyon.  
 Corner was tied into on a Survey filed in Book B, Page 156.  
 It is presumed that Rossman set a 3/4" Rebar in conjunction with C.S.M. #613.

**DESCRIPTION OF CORNER EVIDENCE FOUND: (b) (f) (g) (h)**

I found a 3/4" Rebar at the corners location. I set four witness corners after I verified the Monument's location with G.P.S. and E.D.M. methods.

**DESCRIPTION OF CORNER AND WITNESS MONUMENTS, references and accessories used to perpetuate the original or re-established location of this corner. (c) (d) (e)**

Witnesses to corner location Shane Austin, Owen Austin, Tanner Austin.  
 Drawn by: Owen Austin.

SKETCH:

**LEGEND**

- Section Corner—as designated
- 3/4" x 18" rebar set
- x-x-x- Existing fence
- ~~~~~ Change in field

