

# U.S. PUBLIC LAND SURVEY MONUMENT RECORD - GRANT COUNTY, WI

Section 19, Town 3 North Range 2 West, Town of Harrison (a)

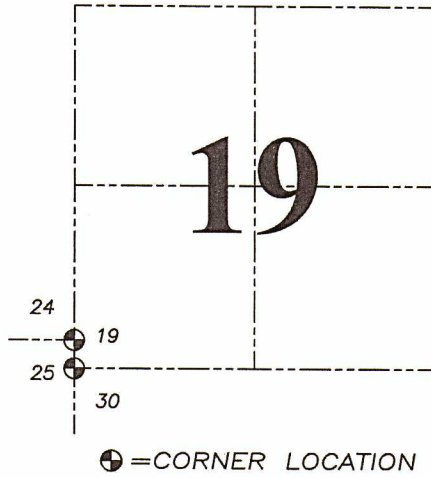
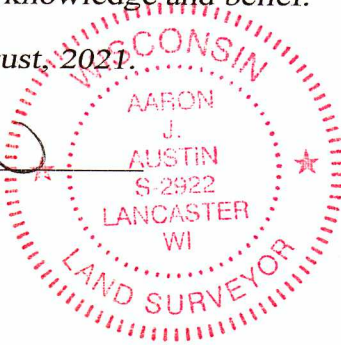
NOTE: This form is intended and designed to fulfill all requirements of the Wisconsin Administrative Code Chapter A-E 7.08, U.S. Public Land Survey Monument Record (3) (a) (b) (c) (d) (e) (f) (g) (h) (i).

**CERTIFICATE:** (i)

I, Aaron J. Austin, Wisconsin Professional Land Surveyor, do hereby certify that the corner location on this record was determined by me and/or under my direct supervision and that this U.S. Public Land Survey Monument Record is correct and complete to the best of my knowledge and belief.

Dated this 30th day of August, 2021

*Aaron J. Austin*  
Aaron J. Austin, S-2922



Grant County Coordinates:  
NAD 83 (2011)  
Northing: 473,790.32  
Easting: 832,031.44

**HISTORY OF CORNER ESTABLISHMENT:**

Original corner was set in 1833 by Robert Clark.  
I found a 3/4" Rebar and prepared a Survey Monument Record dated 10/7/2011.

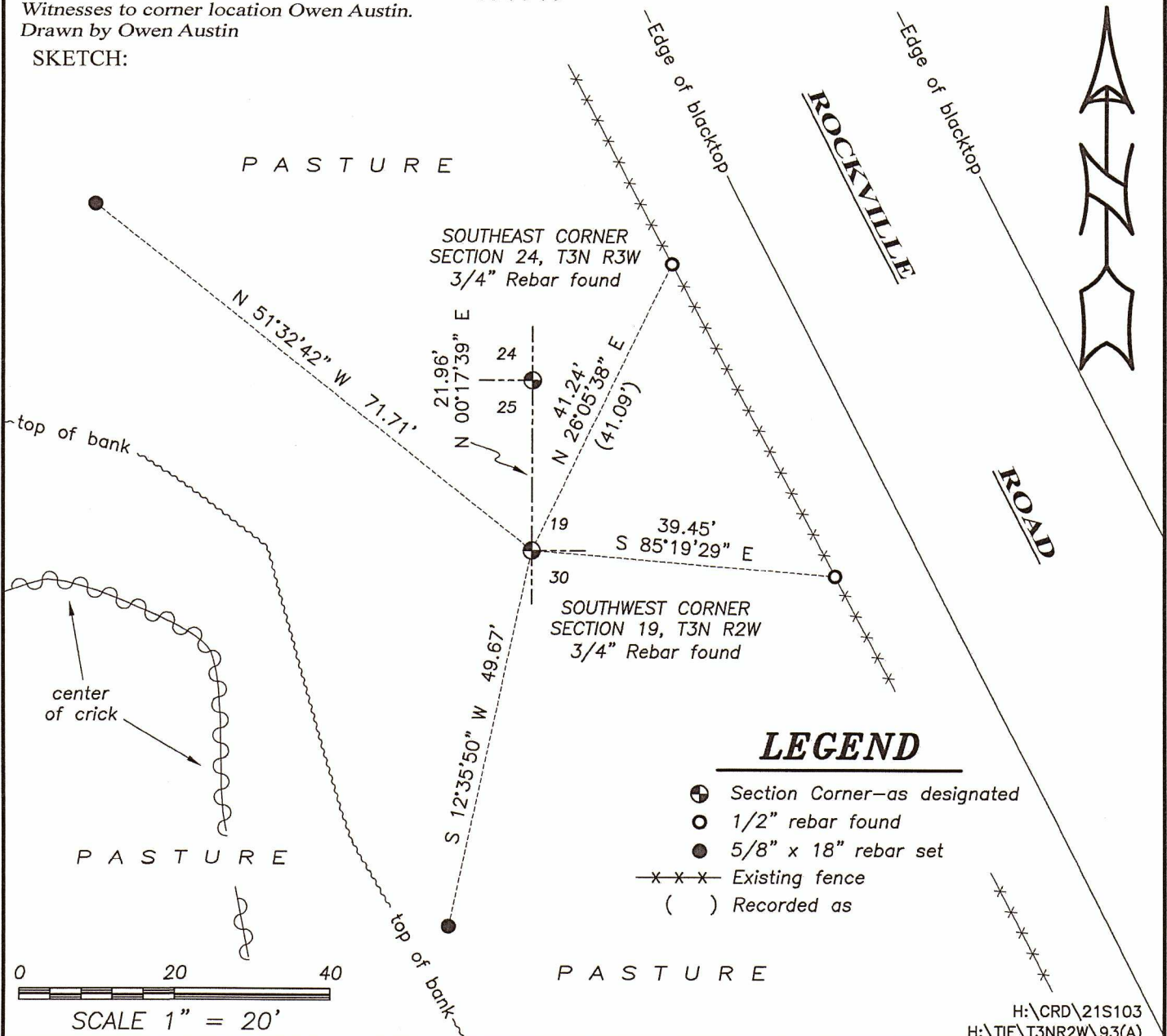
**DESCRIPTION OF CORNER EVIDENCE FOUND:** (b) (f) (g) (h)

I found the 3/4" Rebar and two witness corners from my previous Survey Monument Record. I set two additional witness corners after I verified the Monument's location G.P.S. and E.D.M. methods.

**DESCRIPTION OF CORNER AND WITNESS MONUMENTS,** references and accessories used to perpetuate the original or re-established location of this corner. (c) (d) (e)

Witnesses to corner location Owen Austin.  
Drawn by Owen Austin

**SKETCH:**



H:\CRD\21S103  
H:\TIE\T3NR2W\93(A)

# U.S. PUBLIC LAND SURVEY MONUMENT RECORD - GRANT COUNTY, WI

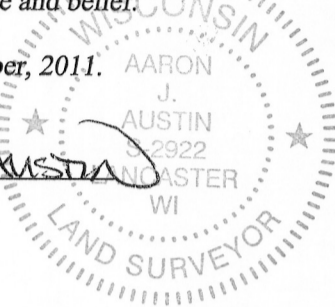
Section 19, Town 3 North Range 2 West, Town of Harrison

**CERTIFICATE:**

I, Aaron J. Austin, do hereby certify that the corner location on this record was determined by me and/or under my direct supervision and that this U.S. Public Land Survey Monument Record is correct and complete to the best of my knowledge and belief.

Dated this 7th day of October, 2011.

*Aaron J. Austin*  
 Aaron J. Austin, S-2922



● = CORNER LOCATION

HISTORY OF CORNER ESTABLISHMENT:

Corner was originally set by Robert Clark in 1833. Stuntz tied to the corner in 1849. McFall tied to the corner in 1871. Sampson tied to the corner in 1892. No other record was found for this corner.

DESCRIPTION OF CORNER EVIDENCE FOUND:

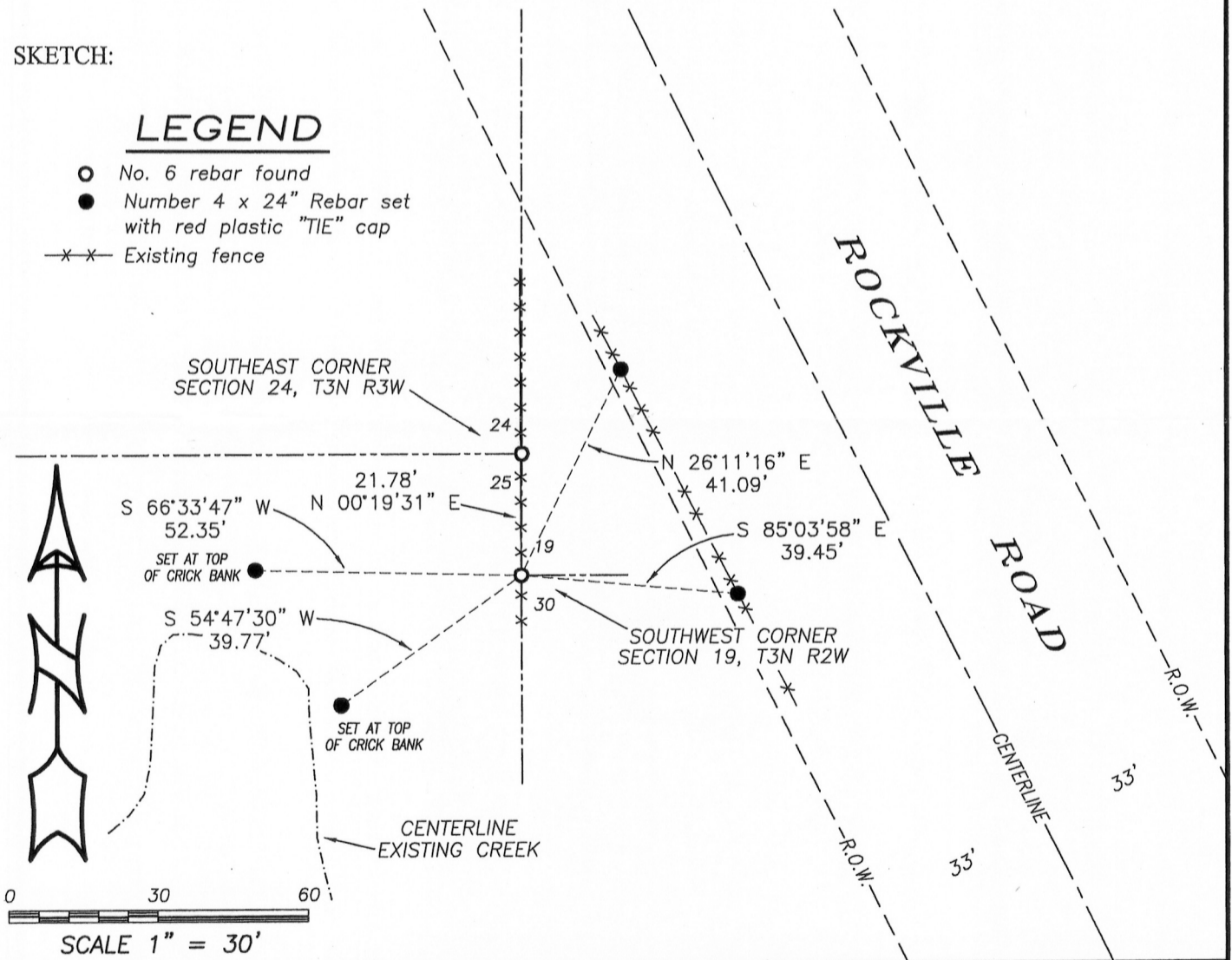
I was unable to locate any evidence of the original corner. I found and accepted a No. 6 rebar and verified this location by E.D.M. and G.P.S. methods. It should be noted that adjoining section corners to the West and South were set by Steven Rossman on C.S.M. No. 613. Those corners were also No. 6 rebars and no ties sheets were found for those corners.

DESCRIPTION OF CORNER AND WITNESS MONUMENTS, references and accessories used to perpetuate the original or re-established location of this corner. Witnesses to corner location Bobby Sedgwick & Shelby Blindert

SKETCH:

**LEGEND**

- No. 6 rebar found
- Number 4 x 24" Rebar set with red plastic "TIE" cap
- x-x- Existing fence



**Austin Engineering LLC**  
 austinengineeringllc.com  
 4211 HWY 81 E, LANCASTER, WI 53813  
 PHONE: 608-723-6363 FAX: 608-723-6702

JOB NO: 11s197  
 G:\T3NR3W\36  
 H:\TIE\T3NR2W\93

FIELDBOOK: TDSR  
 DRAWN BY: AJ AUSTIN  
 CREW: BS-SB