

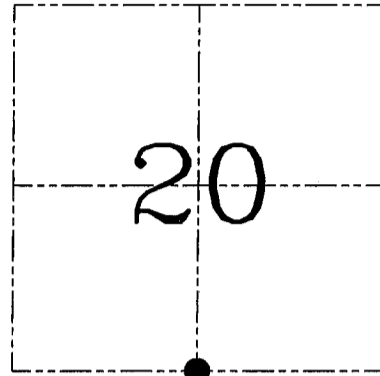
**U.S. PUBLIC LAND SURVEY MONUMENT RECORD – GRANT COUNTY, WI**  
**Section 20, Town 3 North Range 2 West, Town of Harrison**

**CERTIFICATE**

I, Larry L. Austin, do hereby certify that the corner location on this record was determined by me and/or under my direct supervision and that this U.S. public land survey monument record is correct and complete to the best of my knowledge and belief.

Dated this 12th day of October, 2002

*Larry L. Austin*  
 Larry L. Austin S-1903



● = CORNER LOCATION

**HISTORY OF CORNER ESTABLISHMENT**

Corner was originally set in 1833 by Robert Clark.  
 In 1997 I set the corner and ties.

**DESCRIPTION OF CORNER EVIDENCE FOUND**

I was unable to locate the corner and some ties were lost. I reset the corner and new ties. Verified this location using EDM & GPS methods.

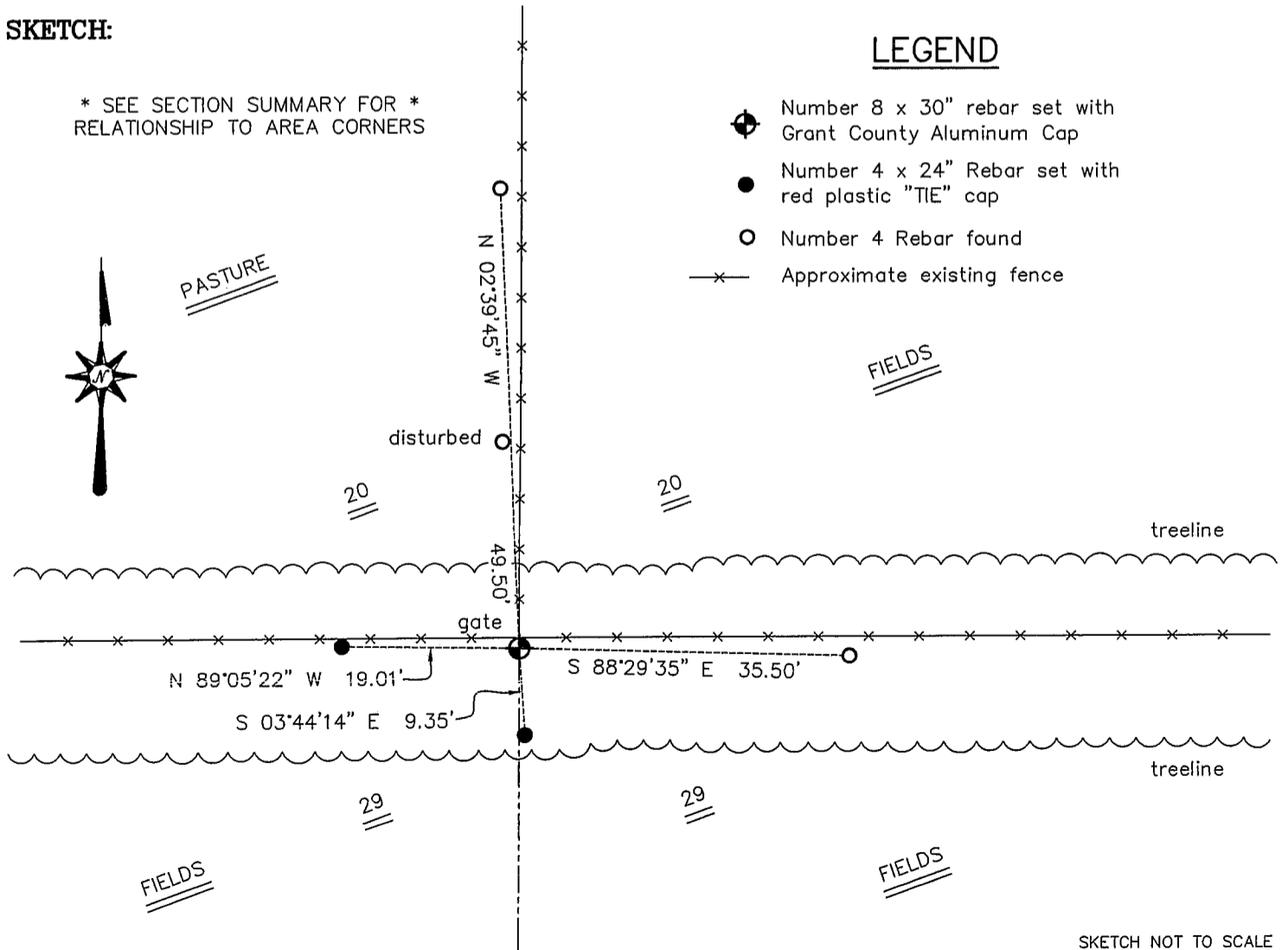
**DESCRIPTION OF CORNER AND WITNESS MONUMENTS**, references and accessories used to perpetuate the original or re-established location of this corner. Witnesses to corner location Bobby Sedgwick & Shelby Blindert & Brad Digman

**SKETCH:**

\* SEE SECTION SUMMARY FOR \*  
 RELATIONSHIP TO AREA CORNERS

**LEGEND**

- Number 8 x 30" rebar set with Grant County Aluminum Cap
- Number 4 x 24" Rebar set with red plastic "TIE" cap
- Number 4 Rebar found
- x— Approximate existing fence



SKETCH NOT TO SCALE

**AUSTIN ENGINEERING, LLC**

4211 HWY 81 EAST, LANCASTER, WI 53813  
 PHONE 608-723-6363 FAX 608-723-6702

FIELDBOOK: SDR33, 2232  
 G: \T3NR2W\21  
 C: \SWA\TIE\T3NR2W\90  
 CREW: BS-SB-SA-BD

DRAWN BY: SW AUSTIN  
 APPROVED: LL AUSTIN

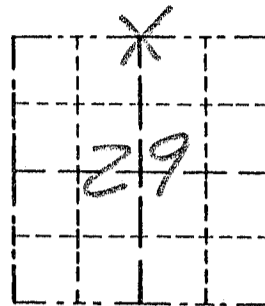
**CORNER NUMBER 90**

Survey Monument Record

TYPE OF MONUMENT 3/4" x 24" IRON BAR SET.

CORNER NO. 90  
SECTION 29  
TOWN 3N  
RANGE 2W

FIELD BOOK: 97-05  
PAGE (21)



LOCATION  
(Indicated by "X")

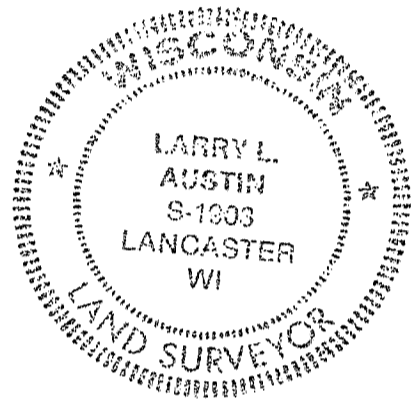
BASIS FOR MONUMENT LOCATION

(Use reverse side if necessary)

Show info such as: History of corner, with reference to Vol. and pg., dates, surveyor; exact description of monument replaced; if location computed, by taped or EDM traverse; landowner, remarks, etc.

SEAL:

CORNER SET IN 1833 BY ROBERT CLARK, NO RECORD OF CORNER FOUND SINCE ORIGINAL SURVEY; CORNER WAS SET AT AN OCCUPIED FENCE CORNER. VERIFIED ITS LOCATION USING EDM METHODS.



CERTIFIED CORRECT

*Larry L. Austin*  
Registered Land Surveyor

DATE: 12/5/97

TIE SKETCH

Show at least three (3) ties and monument

LEGEND

- ⊕ 3/4" x 24" IRON BAR SET
- 1/2" x 15" IRON BAR SET
- \*\* EXISTING FENCE

