

U.S. PUBLIC LAND SURVEY MONUMENT RECORD - GRANT COUNTY, WI

Section 27, Town 3 North Range 2 West, Town of Harrison (a)

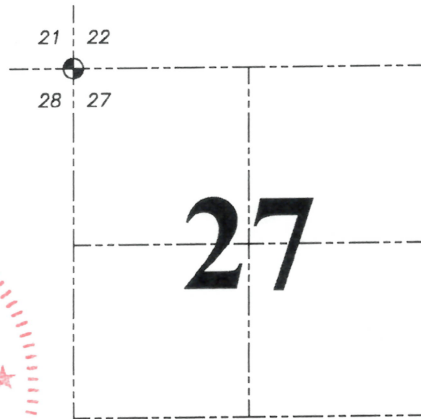
NOTE: This form is intended and designed to fulfill all requirements of the Wisconsin Administrative Code Chapter A-E 7.08, U.S. Public Land Survey Monument Record (3) (a) (b) (c) (d) (e) (f) (g) (h) (i).

CERTIFICATE: (i)

I, Aaron J. Austin, Wisconsin Professional Land Surveyor, do hereby certify that the corner location on this record was determined by me and/or under my direct supervision and that this U.S. Public Land Survey Monument Record is correct and complete to the best of my knowledge and belief.

Dated this 30th day of November, 2023

Aaron J. Austin
 Aaron J. Austin, S-2922



● = CORNER LOCATION

Grant County Coordinates:
 NAD 83 (2011)
 Northing: 473,757.60
 Easting: 847,946.51

HISTORY OF CORNER ESTABLISHMENT:

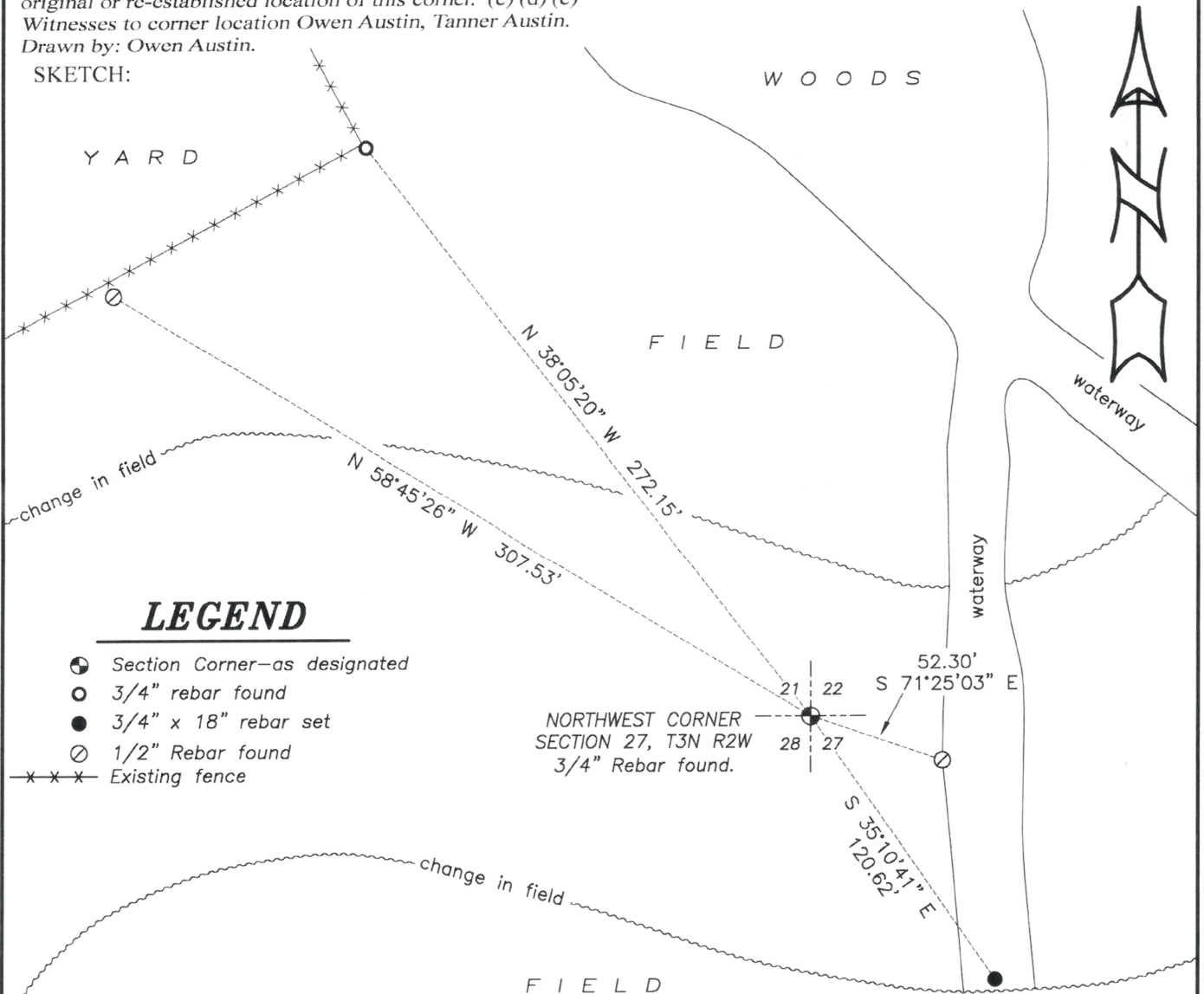
Original corner was set in 1833 by Robert Clark.
 Larry Austin set 3/4" Rebar and prepared a Survey Monument Record dated 8-21-1996.

DESCRIPTION OF CORNER EVIDENCE FOUND: (b) (f) (g) (h)

I found the 3/4" Rebar and three witness corners Larry set. I set one additional witness corner after I verified the Monument's location with G.P.S. and E.D.M. methods.

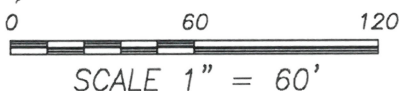
DESCRIPTION OF CORNER AND WITNESS MONUMENTS, references and accessories used to perpetuate the original or re-established location of this corner. (c) (d) (e)
 Witnesses to corner location Owen Austin, Tanner Austin.
 Drawn by: Owen Austin.

SKETCH:



LEGEND

- Section Corner—as designated
- 3/4" rebar found
- 3/4" x 18" rebar set
- 1/2" Rebar found
- x-x-x- Existing fence



GRANT COUNTY

Survey Monument Record

TYPE OF MONUMENT 3/4" X 24" IRON BAR SET

STATE PLANE COORDINATES: N _____
E _____

ELEVATION — M.S.L. DATUM: _____

THETA ANGLE: _____

FIELD BOOK: 96-05

PAGE 22

CORNER NO. 87

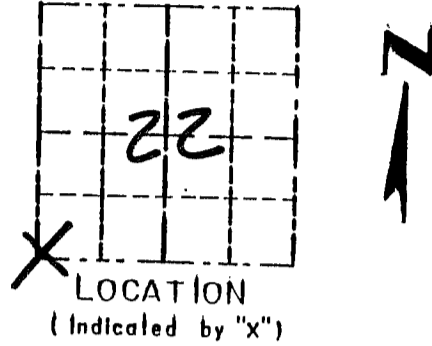
SECTION 22

TOWN 32

RANGE 2W

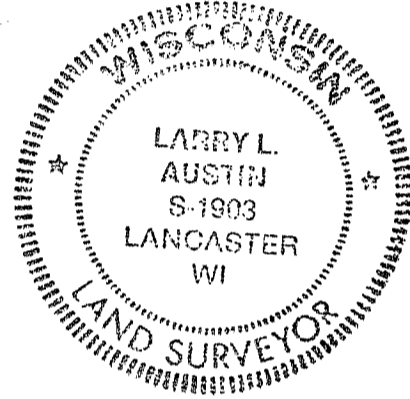
BASIS FOR MONUMENT LOCATION

(Use reverse side if necessary)



CORNER SET IN 1833 BY ROBERT CLARK. IN 1898 CHARLES SAMPSON SET A ROCK AT THIS LOCATION. I WAS UNABLE TO LOCATE THE ROCK. I USED THE DISTANCES OFF THE PLAT TO RESET THE CORNER. VERIFIED ITS LOCATION USING EDM METHODS.

SEAL:



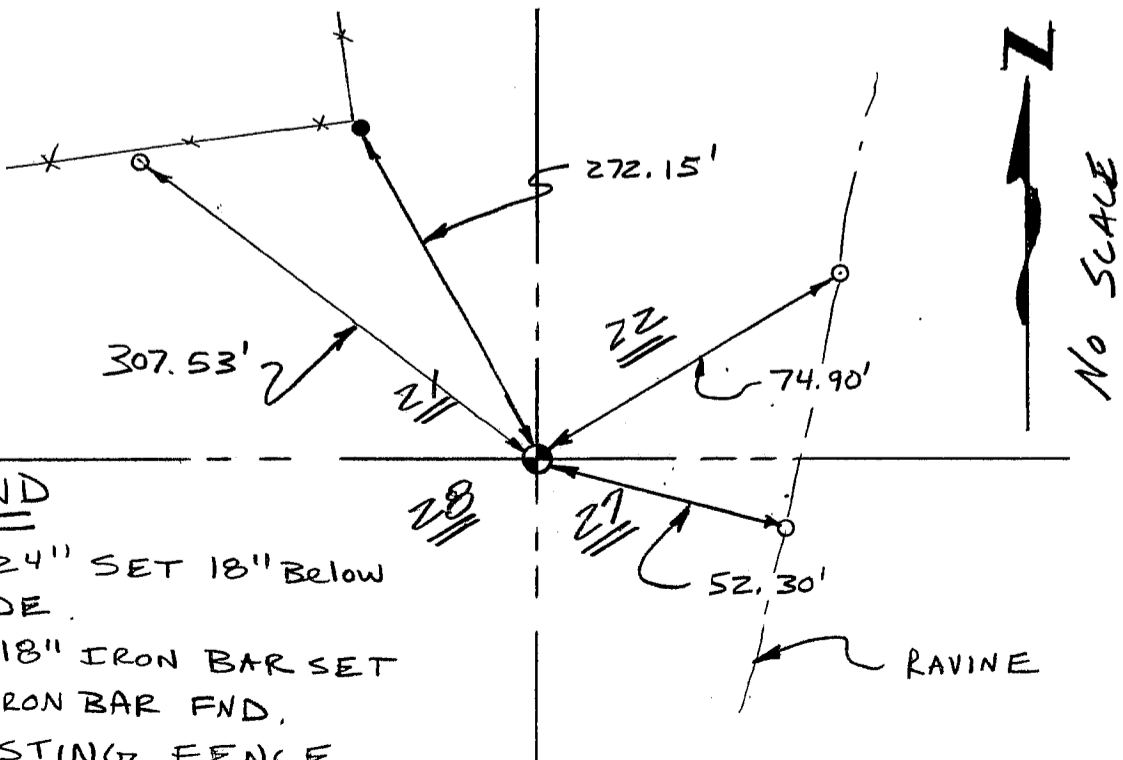
CERTIFIED CORRECT

Larry L. Austin
Registered Land Surveyor

DATE: 8/21/96

TIE SKETCH

Show at least three (3) ties and monument.



LEGEND

- ⊙ 3/4" X 24" SET 18" BELOW GRADE
- 1/2" X 18" IRON BAR SET
- 3/4" IRON BAR FND.
- XX EXISTING FENCE