

U.S. PUBLIC LAND SURVEY MONUMENT RECORD - GRANT COUNTY, WI

Section 22, Town 3 North Range 2 West, Town of Harrison (a)

NOTE: This form is intended and designed to fulfill all requirements of the Wisconsin Administrative Code Chapter A-E 7.08, U.S. Public Land Survey Monument Record (3) (a) (b) (c) (d) (e) (f) (g) (h) (i).

CERTIFICATE: (i)

I, Aaron J. Austin, Wisconsin Professional Land Surveyor, do hereby certify that the corner location on this record was determined by me and/or under my direct supervision and that this U.S. Public Land Survey Monument Record is correct and complete to the best of my knowledge and belief.

Dated this 18th day of July, 2022.

Aaron J. Austin

Aaron J. Austin, S-2922



☉ = CORNER LOCATION

Grant County Coordinates:
NAD 83 (2011)
Northing: 473,748.74
Easting: 850,558.42

HISTORY OF CORNER ESTABLISHMENT:

Original corner was set in 1833 by Robert Clark.
Larry Austin set a Railroad Spike and prepared a Survey Monument Record dated 9/24/1989.
Larry Austin found a Railroad Spike and prepared a Survey Monument Record dated 8/21/1996.

DESCRIPTION OF CORNER EVIDENCE FOUND: (b) (f) (g) (h)

I found Railroad Spike Larry set 1' below the surface of the road. I set a 1/2" x 4 3/4" Steel Cotton Gin Spike at the Surface. I found one witness corner and set three additional after I verified the Monument's location with G.P.S. and E.D.M. methods.

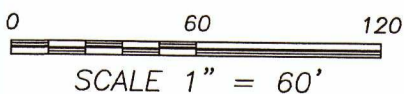
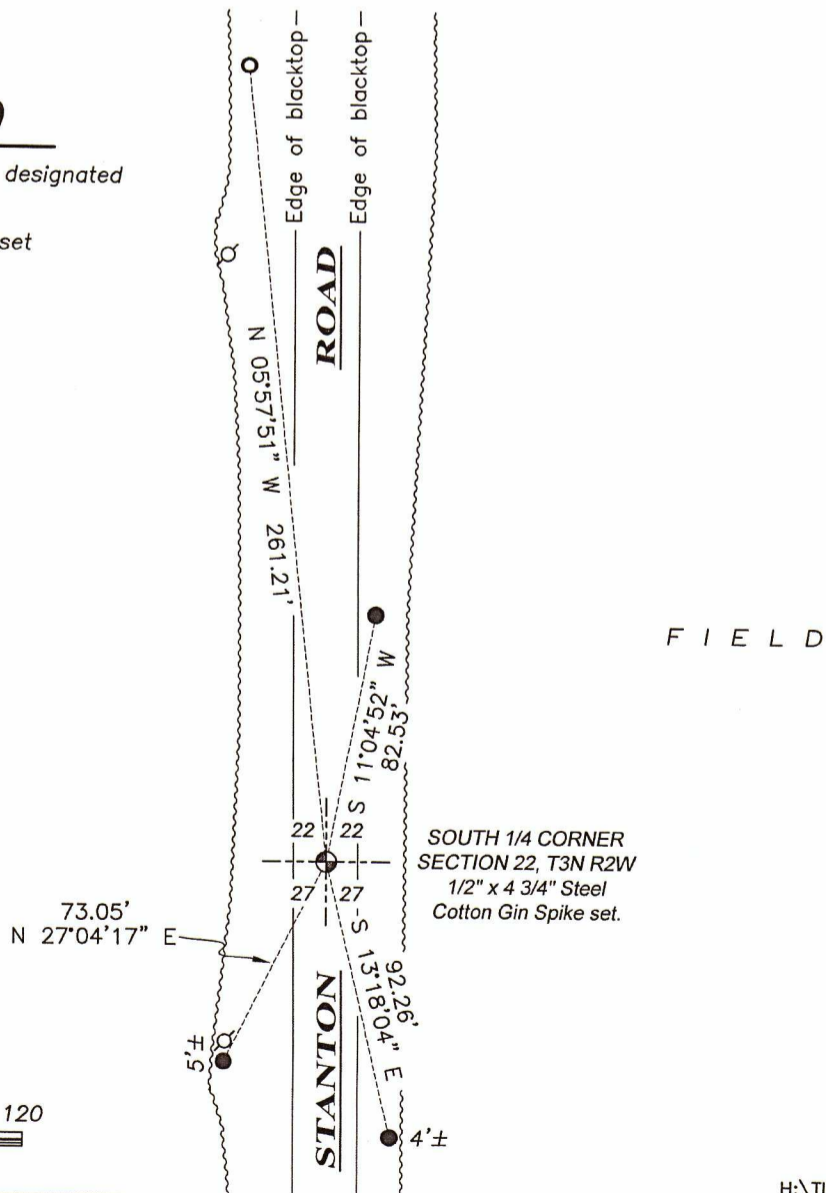
DESCRIPTION OF CORNER AND WITNESS MONUMENTS: references and accessories used to perpetuate the original or re-established location of this corner. (c) (d) (e)

Witnesses to corner location Owen Austin.
Drawn by: Owen Austin

SKETCH:

LEGEND

- ☉ Section Corner—as designated
- 1/2" rebar found
- 5/8" x 18" rebar set
- ⊗ Existing utility pole
- ~~~~~ Edge of field



GRANT COUNTY

Survey Monument Record

TYPE OF MONUMENT RAILROAD SPIKE FND.

STATE PLANE COORDINATES: N _____
E _____

ELEVATION - M.S.L. DATUM: _____

THETA ANGLE: _____

FIELD BOOK: 96-05

PAGE: 22

CORNER NO. 86

SECTION 22

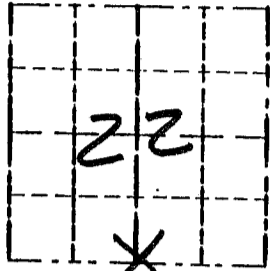
TOWN 3N

RANGE 2W

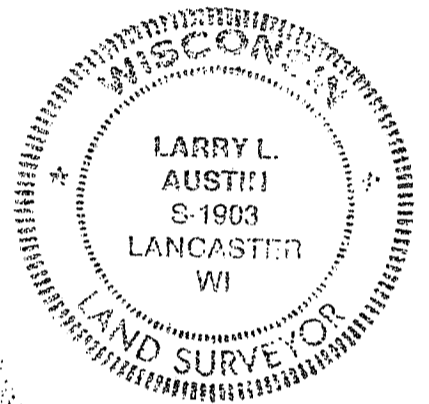
BASIS FOR MONUMENT LOCATION

(Use reverse side if necessary)

CORNER SET IN 1833 BY ROBERT CLARK... IN 1898 CHARLES SAMPSON LOCATED THE BEARING TREES NO MONUMENT PLACED. IN 1989 I SET A RAILROAD SPIKE BASED UPON OCCUPIED EVIDENCE; IN 1994 LARRY SCHMIT FOUND AN ACCEPTED THE RAILROAD SPIKE. I ACCEPTED THE RAILROAD SPIKE AFTER VERIFYING ITS LOCATION USING EDM METHODS.



LOCATION (Indicated by "X")



CERTIFIED CORRECT

Larry L. Austin
Registered Land Surveyor

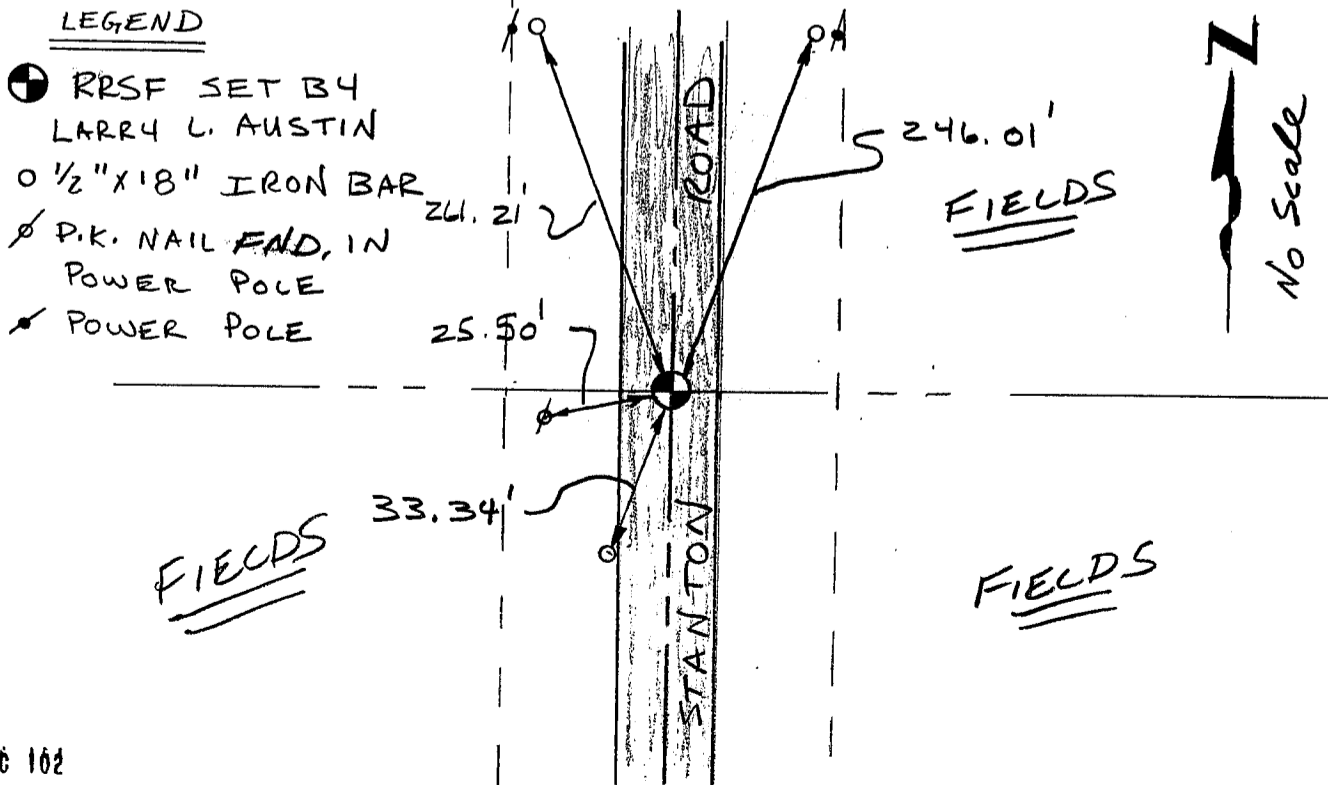
DATE: 2/21/96

TIE SKETCH

Show at least three (3) ties and monument

LEGEND

- ⊕ RRSF SET BY LARRY L. AUSTIN
- 1/2" x 18" IRON BAR
- ⊙ P.K. NAIL FND, IN POWER POLE
- ⊙ POWER POLE



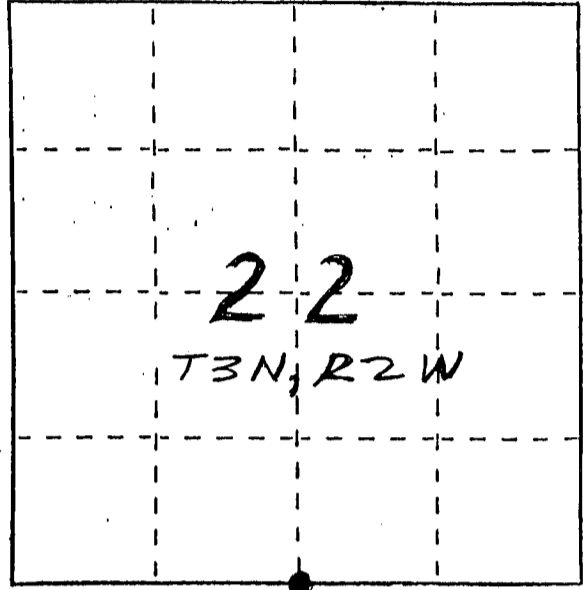
Harrison

U. S. PUBLIC LAND SURVEY MONUMENT RECORD

INSTRUCTIONS: This record shall show the location of the corner and shall include all of the following nine elements (a through i).

- (a) Identify the corner by reference to the U.S. public land survey system.
- = Corner monument restored.

SOUTH 1/4 CORNER OF
SECTION 22, T3N, R2W
HARRISON TWP., GRANT
CO., WISCONSIN



- (b) Describe any record evidence, monument evidence, occupational evidence, testimonial evidence or any other material evidence you considered, and whether the monument was found or placed.
MONUMENT WAS PLACED BASED UPON OCCUPIED EVIDENCE;
NO OTHER EVIDENCE SINCE ORIGINAL SURVEYS.

- (c) In the plan view drawing below, provide reference ties to at least 4 witness monuments, or, if the location is within a municipality, to at least 2 witness monuments. (Witness monuments shall be made of concrete, natural stone, iron or other equally durable material.)
Describe witness monuments.

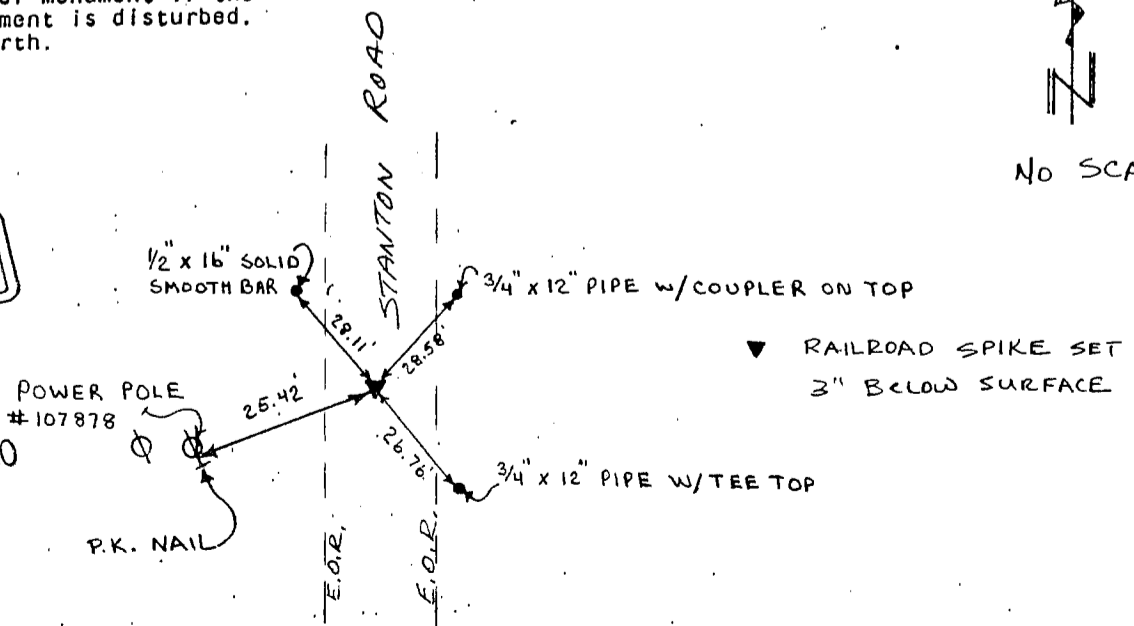
- (d) Show a plan-view drawing depicting the relevant monuments and reference ties which is sufficient in detail to enable accurate relocation of the corner monument if the corner monument is disturbed. Indicate north.



NO SCALE

GRANT COUNTY CLERK
RECEIVED

SEP 20 1990



(e) Describe any material discrepancy between the location of the corner as restored or reestablished and the location of that corner as previously restored or reestablished by distance and direction. Show the discrepancy on the plan view drawing under (d), above. Show the distances between the corner as previously restored or reestablished and (1) the corner as restored or reestablished, and (2) to at least 2 of the witness monuments shown on the drawing in (d), above.

NONE

(f) Was the corner restored through acceptance of (1) an obliterated evidence location, or, (2) a found perpetuated location?

(2) FOUND PERPETUATED LOCATION.

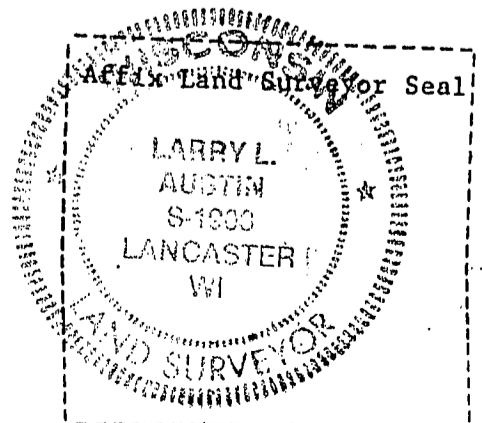
(g&h) Was the corner reestablished through lost corner proportionate methods? If so, show the method, including the directions and distances to other public land survey corners used as evidence or used for proportioning in determining the corner location?

N.A.

(i) I, LARRY L. AUSTIN
(type or print name) certify that the corner location shown on this record was determined by me or under my direction and control and that this U.S. Public Land Survey Monument Record is correct and complete to the best of my knowledge and belief.

Signature

Date



Larry L. Austin

9/24/89