

# GRANT COUNTY CERTIFIED LAND CORNER

CORNER NUMBER 80

**CERTIFICATE:**

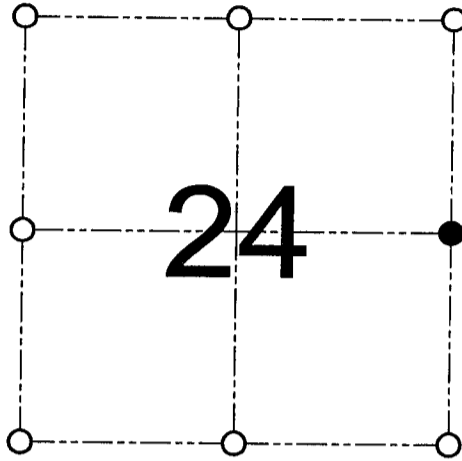
I, Larry L. Austin, do hereby certify that on the 12th day of September, 2000, I found evidence of the East 1/4 corner of Section 24, Town 3 North, Range 2 West, of the 4th Principal Meridian, and I re-established said corner according to the Wisconsin statutes as shown and described hereon.

Dated this 8th day of November, 2000

*Larry L. Austin*  
 Larry L. Austin S-1903  
 Grant County Cook

N 476369.5

E 863747.6



● = CORNER LOCATION

EAST 1/4 CORNER OF  
SECTION 24, T 3 N R 2 W  
TOWN OF HARRISON

**HISTORY OF ORIGINAL CORNER ESTABLISHMENT:**

Corner was originally set in 1832 by Lucius Lyon.  
 In 1897 Sampson tied to the corner.

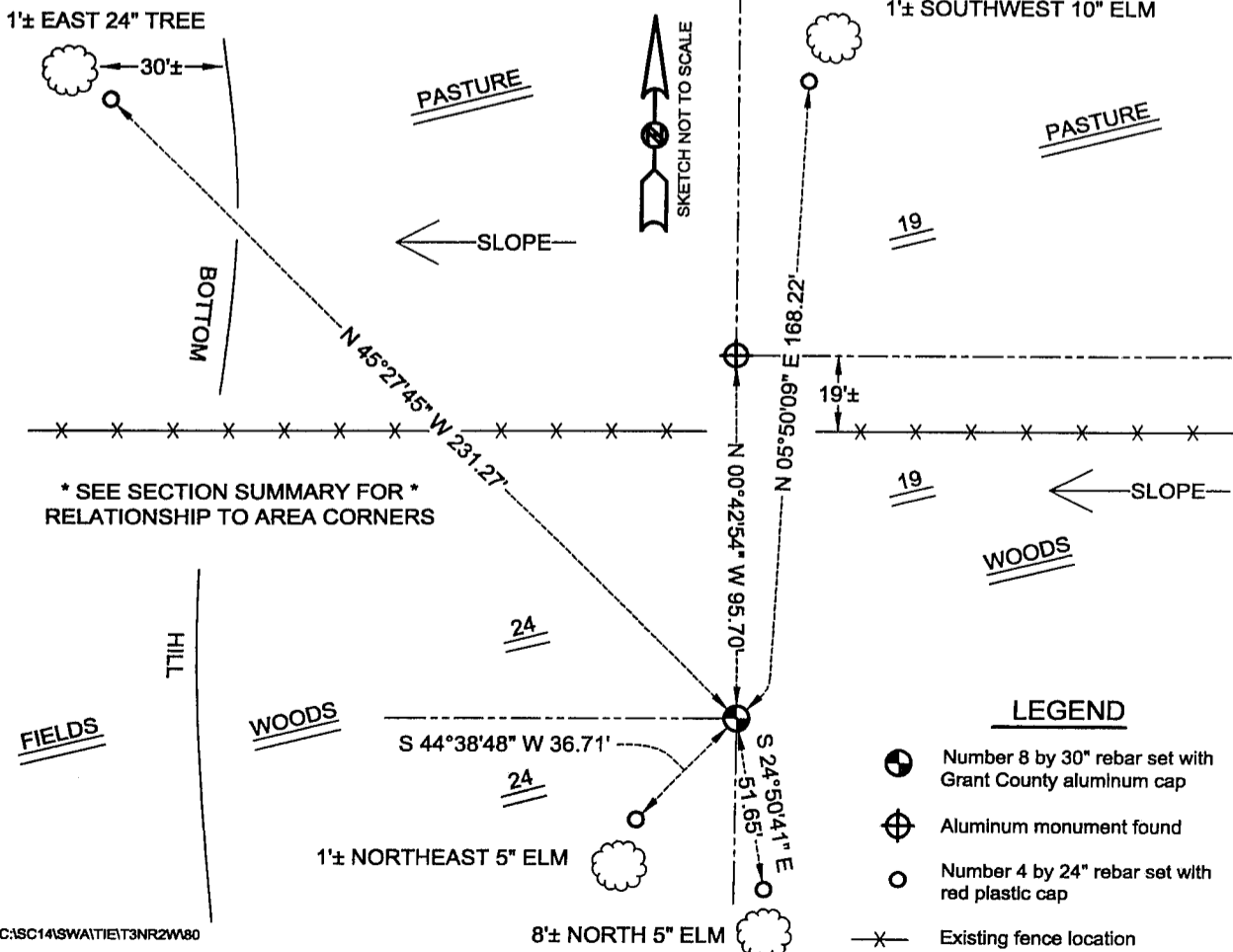
**DESCRIPTION OF CORNER EVIDENCE FOUND:**

I found the existing West Quarter corner of Section 19 and set the corner at the proportioned offset from that corner. Verified it's location using EDM & GPS methods.

**DESCRIPTION OF CORNER AND WITNESS MONUMENTS, references and accessories used to perpetuate the original or re-established location of this corner**

WITNESS TO THE CORNER LOCATION: SHANE AUSTIN & JASON MILES & BOBBY SEDGWICK

**SKETCH:**



\* SEE SECTION SUMMARY FOR \*  
RELATIONSHIP TO AREA CORNERS

**LEGEND**

- Number 8 by 30" rebar set with Grant County aluminum cap
- ⊕ Aluminum monument found
- Number 4 by 24" rebar set with red plastic cap
- X— Existing fence location