

U.S. PUBLIC LAND SURVEY MONUMENT RECORD - GRANT COUNTY, WI

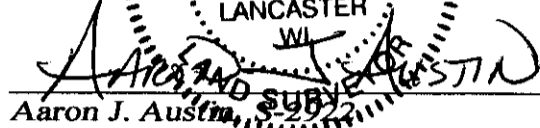
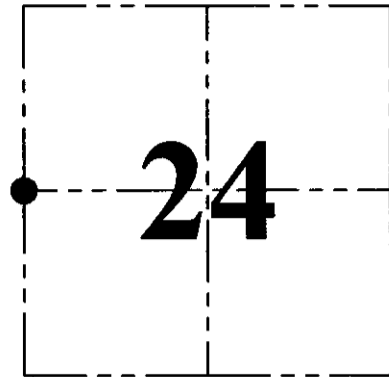
Section 24, Town 3 North Range 2 West, Town of Harrison

CERTIFICATE:

I, Aaron J. Austin, Wisconsin Professional Land Surveyor, do hereby certify that the corner location on this record was determined by me and/or under my direct supervision and that this U.S. Public Land Survey Monument Record is correct and complete to the best of my knowledge and belief.

Dated this 15th day of September, 2015.

AUSTIN
LANCASTER
WI
AARON J. AUSTIN
Professional Land Surveyor
No. 3-2932

● = CORNER LOCATION

HISTORY OF CORNER ESTABLISHMENT:

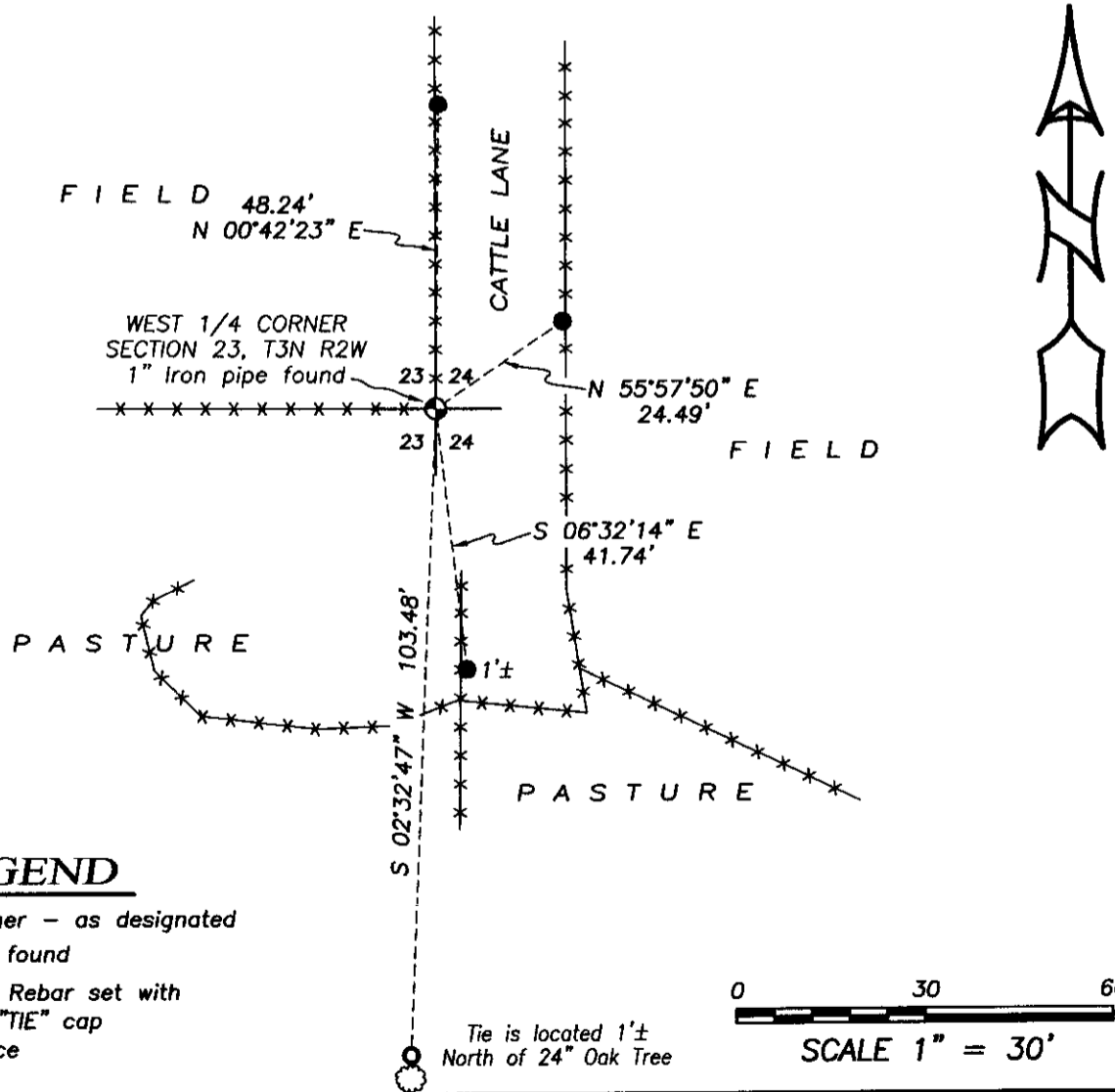
- 1833-Clark set original corner.
- 1846-Wiltse tied to the corner on a Survey in Book B, Page 36.
- 1873-McFall tied to the corner on a Survey in Book C, Page 255.
- 2000-Larry Austin tied to the corner on a Survey in Book 8, Page 16.
- 2000-Larry Austin prepared a Certified Land Corner record for this corner.
- 2005-Larry Austin tied to the corner on a Survey in Book 17, Page 99 and Book 18, Page 40.
- 2013-Aaron Austin tied to the corner on a Survey in Book 33, Page 69.

DESCRIPTION OF CORNER EVIDENCE FOUND:

I found the 1" iron pipe in place and one witness corner. I set 3 additional witness corners after verifying this location with E.D.M. and G.P.S. methods.

DESCRIPTION OF CORNER AND WITNESS MONUMENTS, references and accessories used to perpetuate the original or re-established location of this corner. Witnesses to corner location Shane Austin.

SKETCH:



LEGEND

- ⊕ Section Corner - as designated
- 1/2" Rebar found
- 1/2" x 12" Rebar set with red plastic "TIE" cap
- *- Existing fence



Austin Engineering LLC
austinengineeringllc.com

4211 HWY 81 E, LANCASTER, WI 53813
PHONE: 608-723-6363 FAX: 608-723-6702

JOB NO: 15s173
H:\CRD\15s173
H:\TIE\T3NR2W\79(2)

FIELDBOOK: TDSR
DRAWN BY: AJ AUSTIN
CREW: BS-SB

GRANT COUNTY CERTIFIED LAND CORNER

CORNER NUMBER 79

CERTIFICATE:

I, Larry L. Austin, do hereby certify that on the 6th day of August, 2000, I found evidence of the West 1/4 corner of Section 24, Town 3 North, Range 2 West, of the 4th Principal Meridian, and I re-established said corner according to the Wisconsin statutes as shown and described hereon.

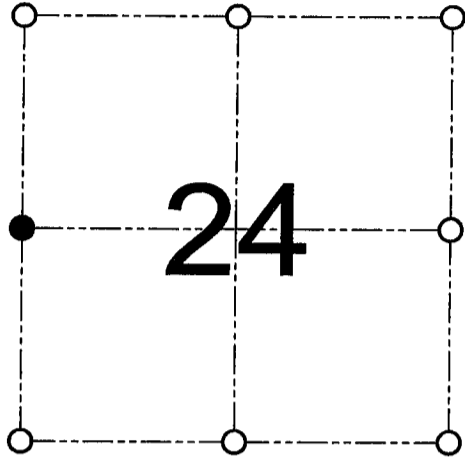
Dated this 8th day of November, 2000

Larry L. Austin
 Larry L. Austin S-1903
 Grant County Coop.



N. 476441.5
 E 858478.2

SEAL



● = CORNER LOCATION
 WEST 1/4 CORNER OF
 SECTION 24, T 3 N R 2 W
 TOWN OF HARRISON

HISTORY OF ORIGINAL CORNER ESTABLISHMENT:

Corner was originally set in 1833 by Clark.
 In 1873 McFall found the original corner.

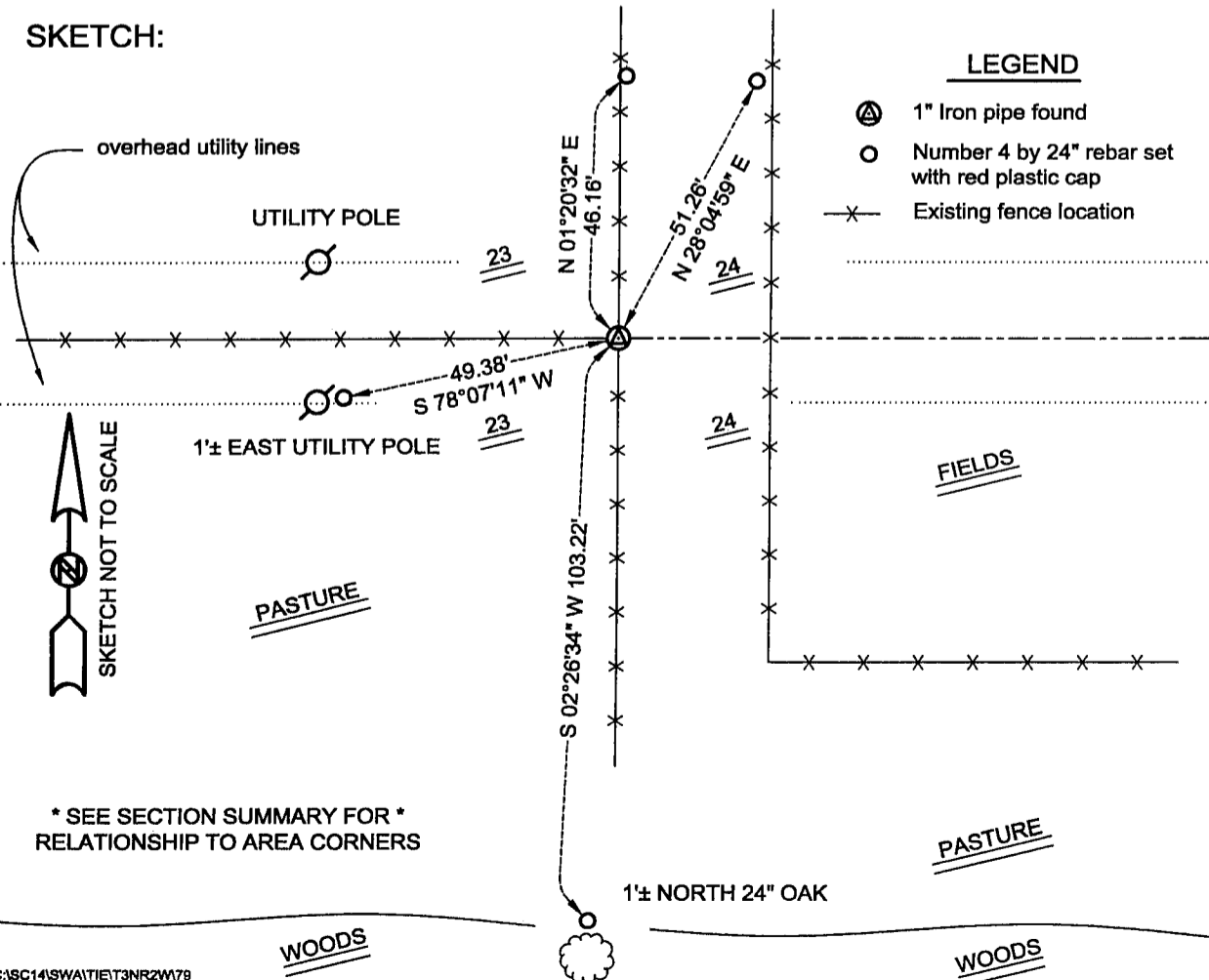
DESCRIPTION OF CORNER EVIDENCE FOUND:

I found an existing 1" iron pipe at this location. I accepted it's location after an EDM & GPS traverse of the area.

DESCRIPTION OF CORNER AND WITNESS MONUMENTS, references and accessories used to perpetuate the original or re-established location of this corner

WITNESS TO THE CORNER LOCATION: SHANE AUSTIN & SHELBY BLINDERT & BOBBY SEDGWICK

SKETCH:



LEGEND

- ⊙ 1" Iron pipe found
- Number 4 by 24" rebar set with red plastic cap
- × Existing fence location

* SEE SECTION SUMMARY FOR *
 RELATIONSHIP TO AREA CORNERS