

U.S. PUBLIC LAND SURVEY MONUMENT RECORD - GRANT COUNTY, WI

Section 22, Town 3 North Range 2 West, Town of Harrison (a)

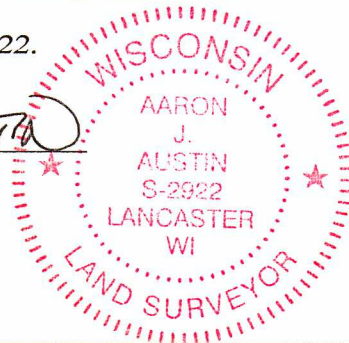
NOTE: This form is intended and designed to fulfill all requirements of the Wisconsin Administrative Code Chapter A-E 7.08, U.S. Public Land Survey Monument Record (3) (a) (b) (c) (d) (e) (f) (g) (h) (i).

CERTIFICATE: (i)

I, Aaron J. Austin, Wisconsin Professional Land Surveyor, do hereby certify that the corner location on this record was determined by me and/or under my direct supervision and that this U.S. Public Land Survey Monument Record is correct and complete to the best of my knowledge and belief.

Dated this 13th day of July, 2022.

Aaron J. Austin
Aaron J. Austin, S-2922



⊕ = CORNER LOCATION

Grant County Coordinates:
NAD 83 (2011)
Northing: 476,413.20
Easting: 853,222.95

HISTORY OF CORNER ESTABLISHMENT:

Original corner was set in 1832 by Lucius Lyon.
Larry Austin set a 3/4" Rebar and prepared a Survey Monument Record dated 8/21/1996.

DESCRIPTION OF CORNER EVIDENCE FOUND: (b) (f) (g) (h)

I set a 1/2" x 4 3/4" Steel Cotton Gin Spike by using two distances from two existing witness corners Larry set. I set two additional witness corners after I verified the Monument's location with G.P.S. and E.D.M. methods.

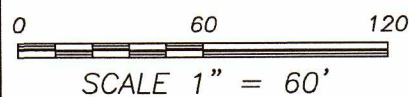
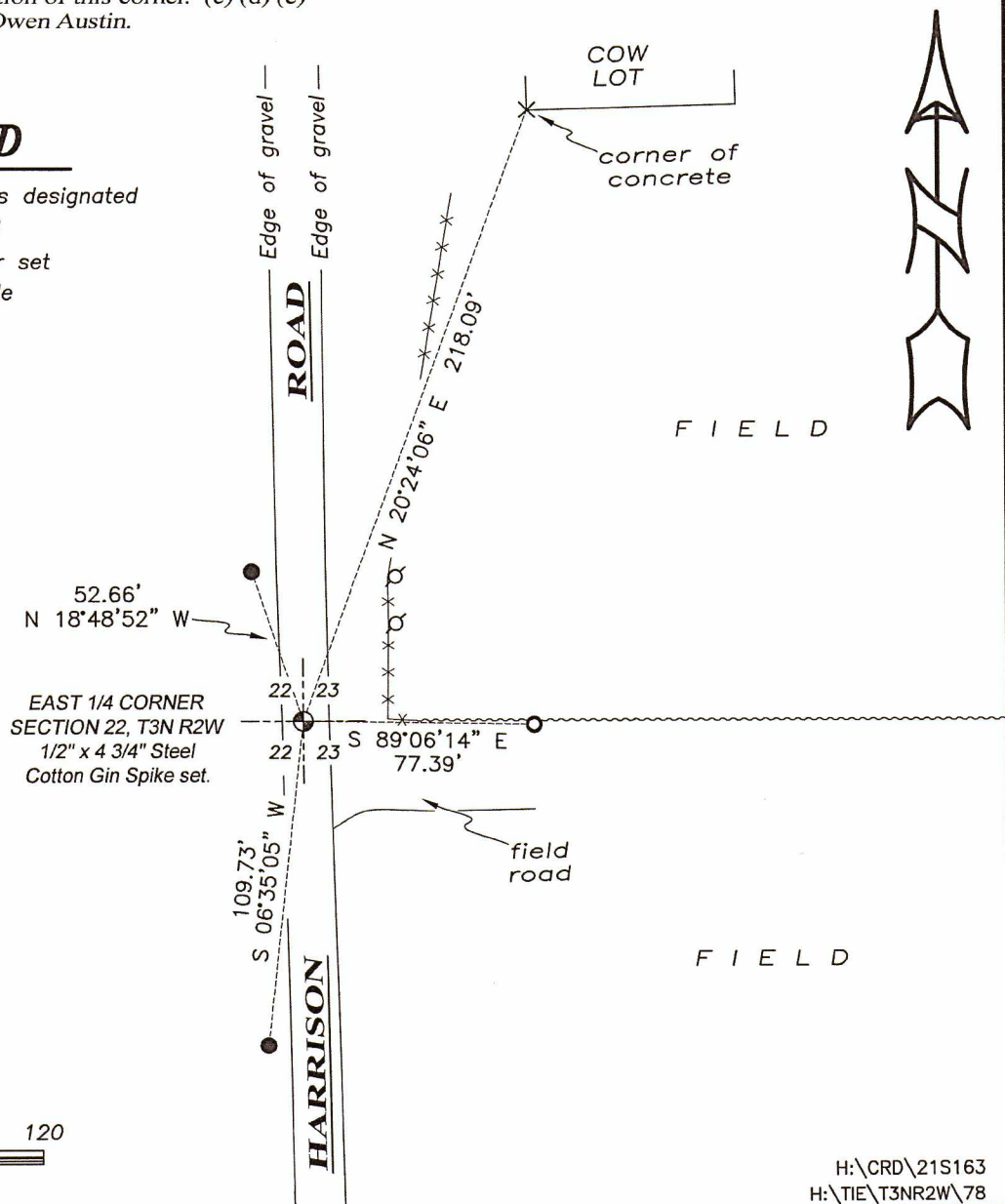
DESCRIPTION OF CORNER AND WITNESS MONUMENTS, references and accessories used to perpetuate the original or re-established location of this corner. (c) (d) (e)

Witnesses to corner location Owen Austin.
Drawn by: Owen Austin

SKETCH:

LEGEND

- ⊕ Section Corner—as designated
- 1/2" rebar found
- 5/8" x 18" rebar set
- ⊙ Existing utility pole
- x-x-x- Existing fence
- ~~~~~ Change in fields



GRANT COUNTY

Survey Monument Record

TYPE OF MONUMENT 3/4" X 24" IRON BAR SET

STATE PLANE COORDINATES: N _____
E _____

ELEVATION — M.S.L. DATUM: _____

THETA ANGLE: _____

FIELD BOOK: 96-05

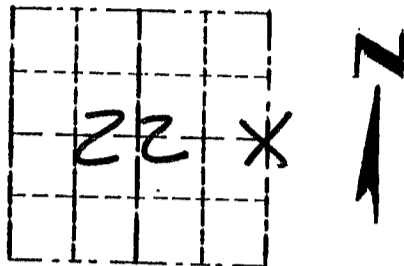
PAGE 22

CORNER NO. 78

SECTION 22

TOWN 3N

RANGE 2W

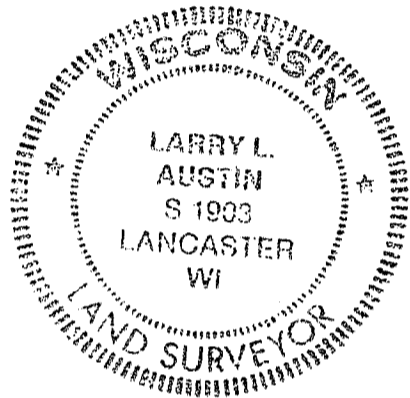


LOCATION
(Indicated by "X")

BASIS FOR MONUMENT LOCATION

(Use reverse side if necessary)

CORNER SET IN 1833 BY
ROBERT CLARK, IN 1898 SEAL:
CHARLES SAMPSON LOCATED
THE BEARING TREES NO
MONUMENT PLACED. I
ACCEPTED AN OCCUPIED CORNER,
I VERIFIED ITS LOCATION
USING EDM METHODS.



CERTIFIED CORRECT

Larry L. Austin
Registered Land Surveyor

DATE: 8/2/96

TIE SKETCH

Show at least three (3) ties and monument

LEGEND

⊕ 3/4" X 24" IRON BAR SET

○ 1/2" X 18" IRON BAR SET

XX EXISTING FENCE

