

U.S. PUBLIC LAND SURVEY MONUMENT RECORD - GRANT COUNTY, WI

Section 22, Town 3 North Range 2 West, Town of Harrison (a)

NOTE: This form is intended and designed to fulfill all requirements of the Wisconsin Administrative Code Chapter A-E 7.08, U.S. Public Land Survey Monument Record (3) (a) (b) (c) (d) (e) (f) (g) (h) (i).

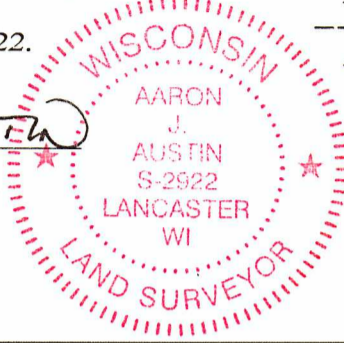
CERTIFICATE: (i)

I, Aaron J. Austin, Wisconsin Professional Land Surveyor, do hereby certify that the corner location on this record was determined by me and/or under my direct supervision and that this U.S. Public Land Survey Monument Record is correct and complete to the best of my knowledge and belief.

Dated this 13th day of July, 2022.

Aaron J. Austin (signature)

Aaron J. Austin, S-2922



⊕ = CORNER LOCATION

Grant County Coordinates: NAD 83 (2011) Northing: 476,390.24 Easting: 847,925.89

HISTORY OF CORNER ESTABLISHMENT:

Original corner was set in 1833 by Robert Clark. Charles Sampson set a Stone on a Survey filed in Book D, Page 273 dated 3/31/1898. Larry Austin found a Stone and prepared a Survey Monument Record dated 8/21/1996.

DESCRIPTION OF CORNER EVIDENCE FOUND: (b) (f) (g) (h)

No evidence was found of the Stone or witness corners Larry set. I set a 7/8" x 24" Rebar by using the recorded distances from the Southwest and East 1/4 corner of Section 22 as shown on a Survey Filed in Book 38, Page 7. I set four witness corners after I verified the Monument's location with G.P.S. and E.D.M. methods.

DESCRIPTION OF CORNER AND WITNESS MONUMENTS, references and accessories used to perpetuate the original or re-established location of this corner. (c) (d) (e)

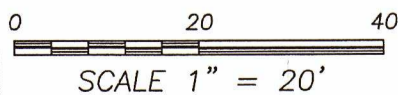
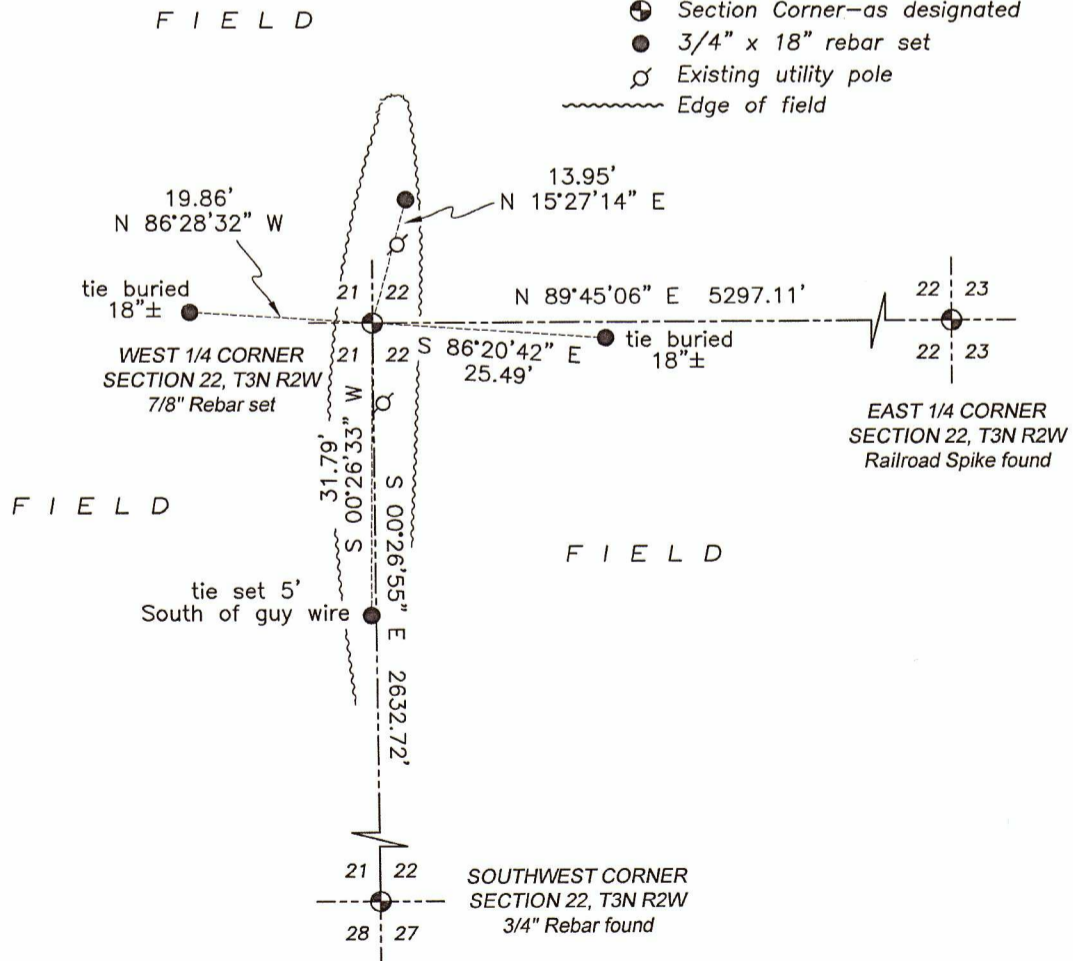
Witnesses to corner location Owen Austin.

Drawn by: Owen Austin

SKETCH:

LEGEND

- Section Corner—as designated
3/4" x 18" rebar set
Existing utility pole
Edge of field



SCALE 1" = 20'

GRANT COUNTY

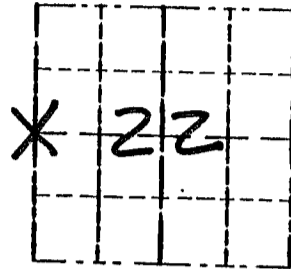
Survey Monument Record

TYPE OF MONUMENT STONE FOUND
 STATE PLANE COORDINATES: N _____
 E _____
 ELEVATION — M.S.L. DATUM: _____
 THETA ANGLE: _____
 FIELD BOOK: 96-05
 PAGE: (22)

CORNER NO. 77
 SECTION 22
 TOWN 3N
 RANGE 2W

BASIS FOR MONUMENT LOCATION

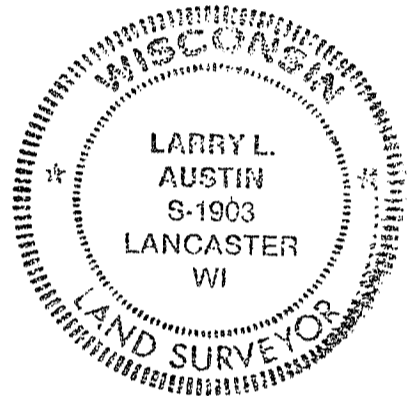
(Use reverse side if necessary)



LOCATION
(Indicated by "X")



CORNER SET IN 1833 BY
 ROBERT CLARK. IN 1898 SEAL:
 CHARLES SIMPSON SET
 A STONE AT THIS LOCATION.
 I FOUND AND ACCEPTED
 THE STONE AT A OCCUPIED
 FENCE CORNER. VERIFIED ITS
 LOCATION USING EDM METHODS.



CERTIFIED CORRECT

Larry L. Austin
 Registered Land Surveyor

DATE: 8/21/96

TIE SKETCH

Show at least three (3) ties and monument

