

U.S. PUBLIC LAND SURVEY MONUMENT RECORD - GRANT COUNTY, WI

Section 19, Town 3 North Range 2 West, Town of Harrison (a)

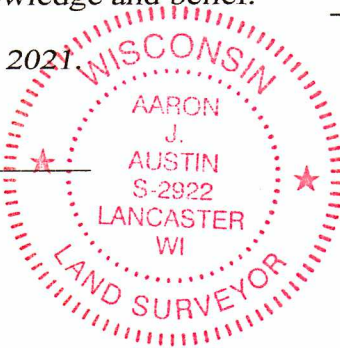
NOTE: This form is intended and designed to fulfill all requirements of the Wisconsin Administrative Code Chapter A-E 7.08, U.S. Public Land Survey Monument Record (3) (a) (b) (c) (d) (e) (f) (g) (h) (i).

CERTIFICATE: (i)

I, Aaron J. Austin, Wisconsin Professional Land Surveyor, do hereby certify that the corner location on this record was determined by me and/or under my direct supervision and that this U.S. Public Land Survey Monument Record is correct and complete to the best of my knowledge and belief.

Dated this 30th day of August, 2021.

Aaron J. Austin
Aaron J. Austin, S-2922



● = CORNER LOCATION

Grant County Coordinates:
NAD 83 (2011)
Northing: 476,380.36
Easting: 832,031.01

HISTORY OF CORNER ESTABLISHMENT:

Original corner was set in 1832 by Lucius Lyon. Ronald Turner found a 1 1/2" Iron Pipe and prepared a Survey Monument Record dated 1/3/1985. I found a Stone at the Corner as referenced on previous Surveys filed in Book: 28, Page: 65; Book: 29, Page: 96, Book: 30, Page: 34; Book: 30, Page: 65.

DESCRIPTION OF CORNER EVIDENCE FOUND: (b) (f) (g) (h)

I found a stone in the Corner's location. I established four witness corners after I verified the Monument's location with G.P.S. and E.D.M. methods.

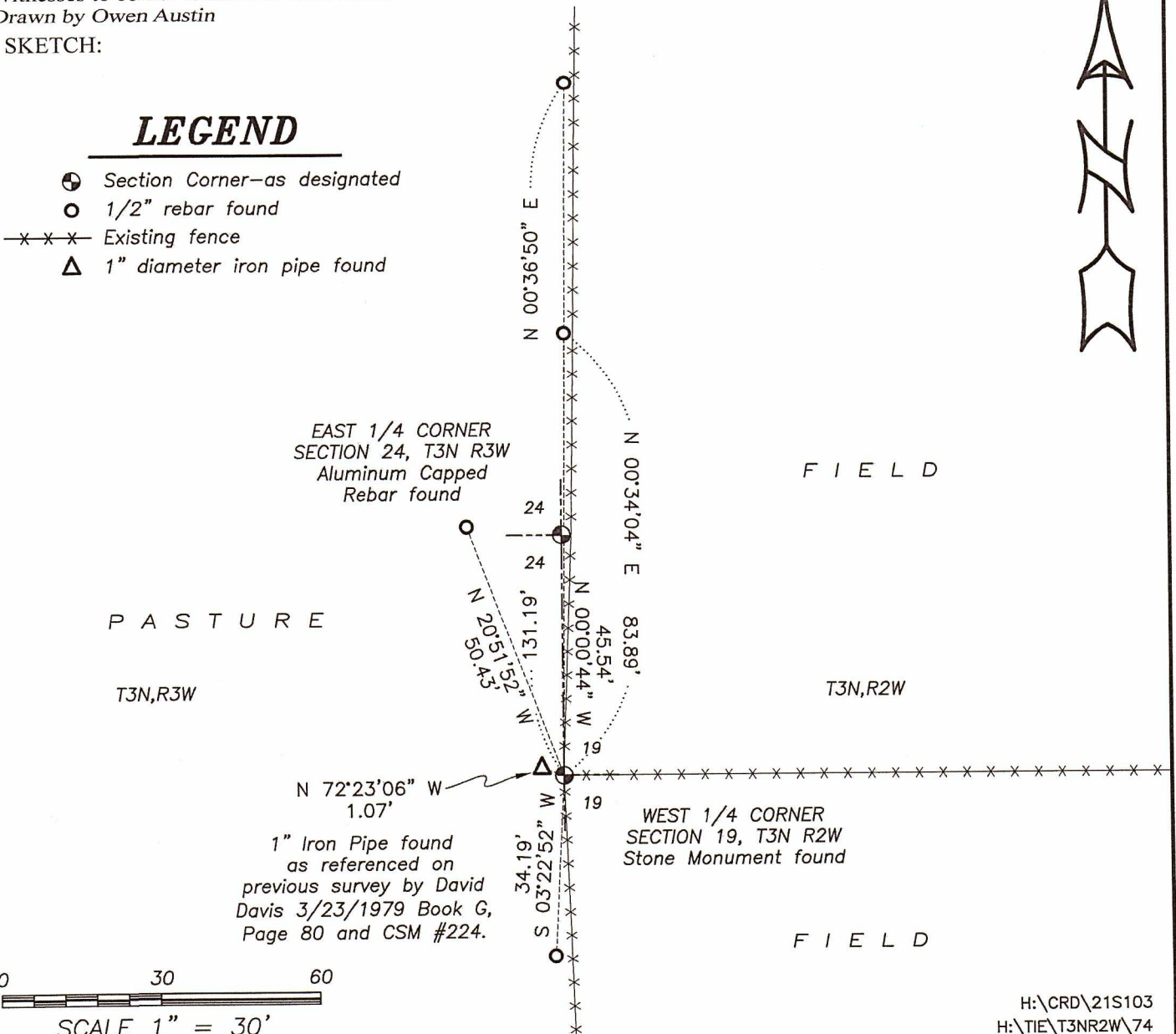
DESCRIPTION OF CORNER AND WITNESS MONUMENTS, references and accessories used to perpetuate the original or re-established location of this corner. (c) (d) (e)

Witnesses to corner location Owen Austin.
Drawn by Owen Austin

SKETCH:

LEGEND

- Section Corner—as designated
- 1/2" rebar found
- x-x-x- Existing fence
- △ 1" diameter iron pipe found



H:\CRD\21S103
H:\TIE\T3NR2W\74

Harrison Twp.

U.S. PUBLIC LAND SURVEY MONUMENT RECORD

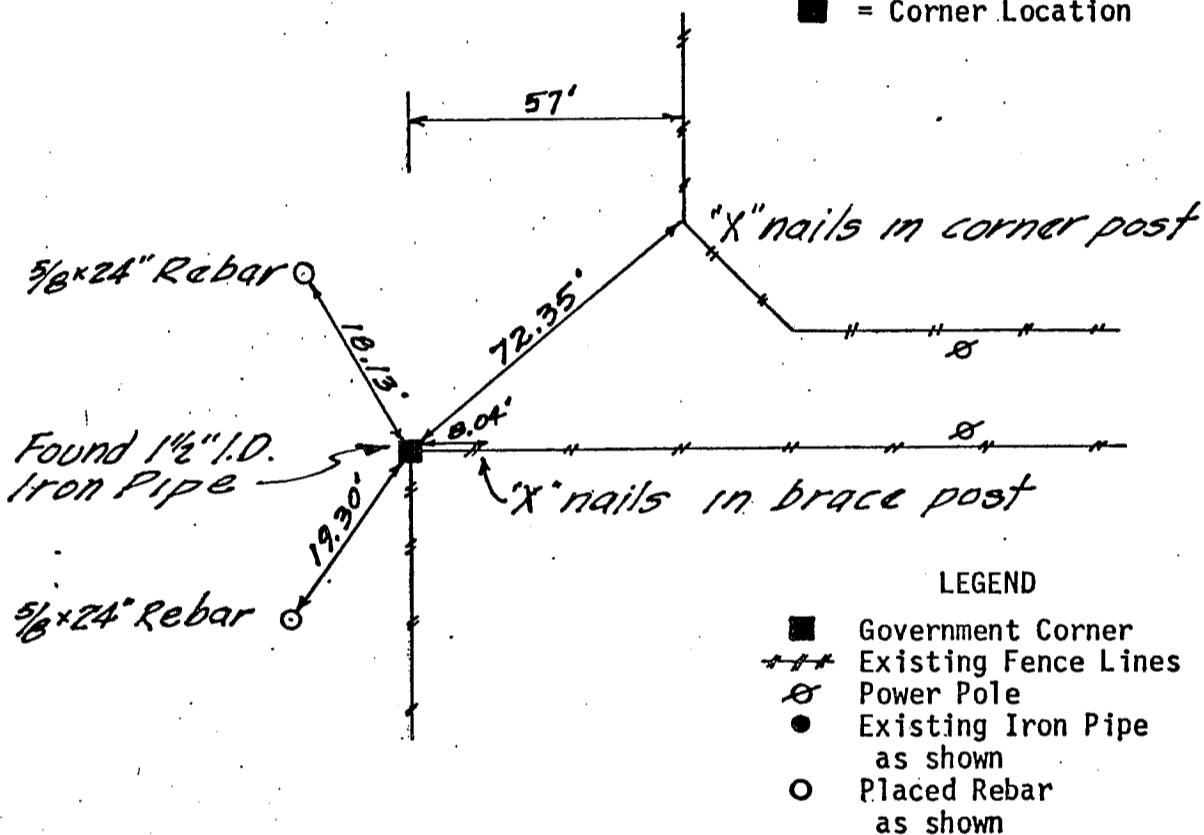
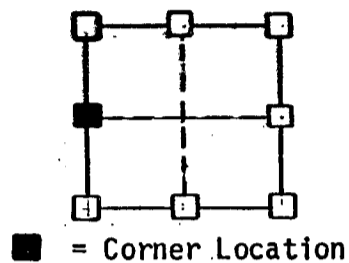
GRANT COUNTY, WISCONSIN

SECTION 19 TOWNSHIP 3N RANGE 2W CORNER W 1/4

EVIDENCE: Found 1 1/2" I.D. iron pipe at fence line intersection. 3" above ground.

MONUMENT: Found Placed

METHOD: Accepted Existing Location
Accepted Occupation
Lost Corner Porportionate Methods



LEGEND

- Government Corner
- +++ Existing Fence Lines
- ⊗ Power Pole
- Existing Iron Pipe as shown
- Placed Rebar as shown

HISTORY & OTHER INFORMATION: Previously called out as a 1" iron pipe.

I, Ronald J. Turner, hereby certify that the corner location shown hereon this record was determined by me or under my direction and control and that this U.S. Public Land Survey Monument Record is correct and complete to the best of my knowledge and belief.



Jan 3, 1985

Ronald J. Turner
Registered Land Surveyor
No. 5-1794

RECEIVED
GRANT COUNTY CLERK

SHIVE-HATTERY ENGINEERS

Cedar Rapids • Iowa City • Davenport
Des Moines • Dubuque • Rock Island



JAN 7 1985

74

Harrison Twp.

U.S. PUBLIC LAND SURVEY MONUMENT RECORD

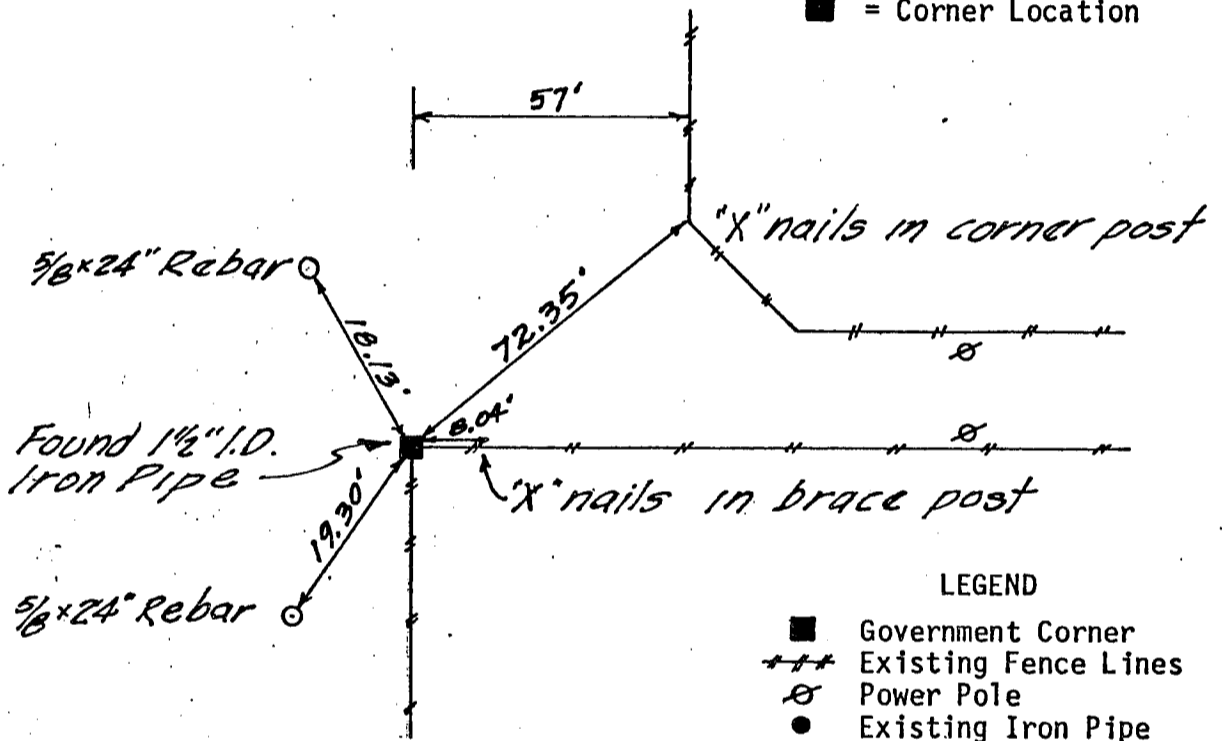
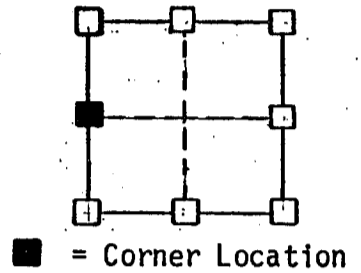
GRANT COUNTY, WISCONSIN

SECTION 19 TOWNSHIP 3N RANGE 2W CORNER W 1/4

EVIDENCE: Found 1 1/2" I.O. iron pipe at fence line intersection. 3" above ground.

MONUMENT: Found Placed

METHOD: Accepted Existing Location
Accepted Occupation
Lost Corner Porportionate Methods



LEGEND

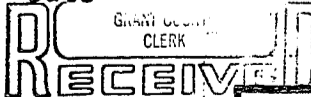
- Government Corner
- Existing Fence Lines
- ⊗ Power Pole
- Existing Iron Pipe as shown
- Placed Rebar as shown

HISTORY & OTHER INFORMATION: Previously called out as a 1" iron pipe.

I, Ronald J. Turner, hereby certify that the corner location shown hereon this record was determined by me or under my direction and control and that this U.S. Public Land Survey Monument Record is correct and complete to the best of my knowledge and belief.



Jan 3, 1985 Ronald J. Turner
Date Registered Land Surveyor
No. 5-1794



SHIVE-HATTERY ENGINEERS
Cedar Rapids • Iowa City • Davenport
Des Moines • Dubuque • Rock Island

JAN 7 1985

U.S. PUBLIC LAND SURVEY MONUMENT RECORD

Harrison Twp.

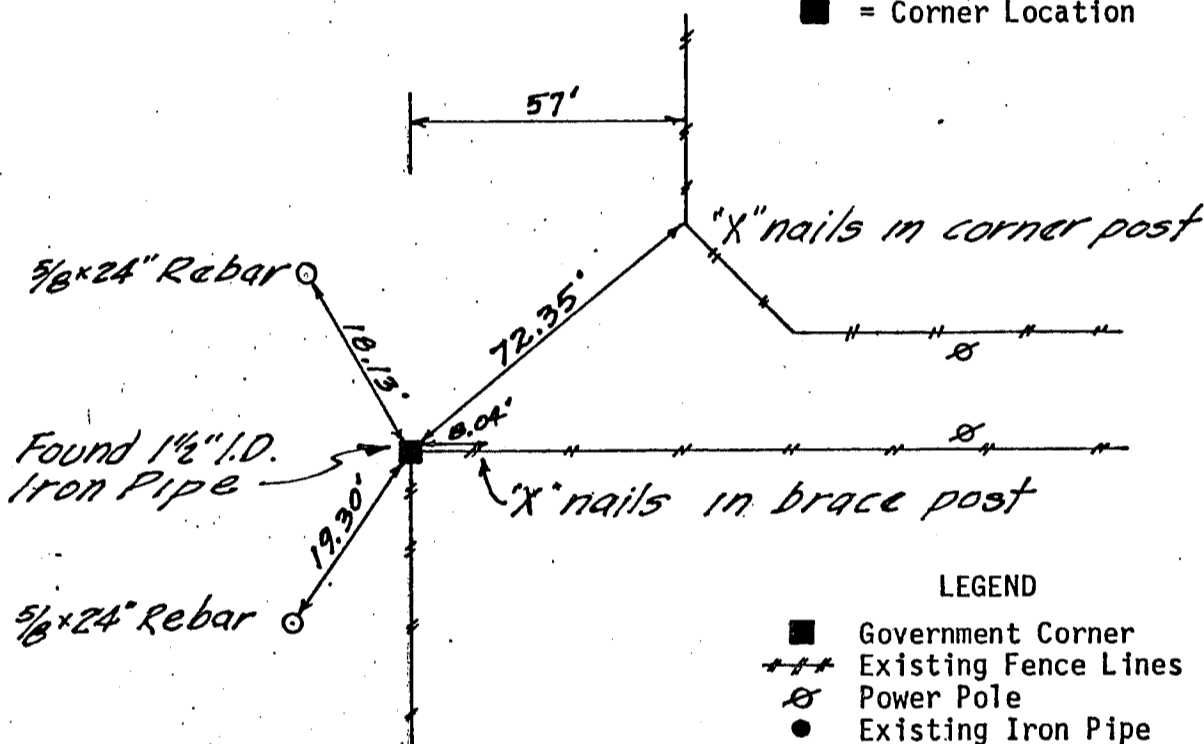
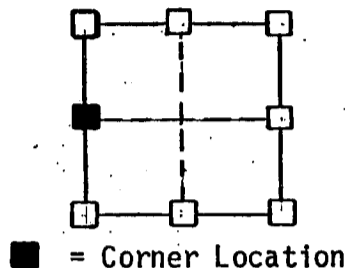
GRANT COUNTY, WISCONSIN

SECTION 19 TOWNSHIP 3N RANGE 2W CORNER W 1/4

EVIDENCE: Found 1 1/2" I.D. iron pipe at fence line intersection. 3" above ground.

MONUMENT: Found Placed

METHOD: Accepted Existing Location
Accepted Occupation
Lost Corner Porportionate Methods

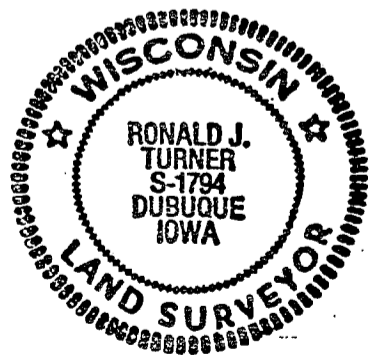


LEGEND

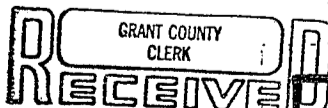
- Government Corner
- +++ Existing Fence Lines
- ⊗ Power Pole
- Existing Iron Pipe as shown
- Placed Rebar as shown

HISTORY & OTHER INFORMATION: Previously called out as a 1" iron pipe.

I, Ronald J. Turner, hereby certify that the corner location shown hereon this record was determined by me or under my direction and control and that this U.S. Public Land Survey Monument Record is correct and complete to the best of my knowledge and belief.



Jan 3, 1985 Ronald J. Turner
Date Registered Land Surveyor
No. S-1794



SHIVE-HATTERY ENGINEERS

Cedar Rapids • Iowa City • Davenport
Des Moines • Dubuque • Rock Island



JAN 7 1985