

# GRANT COUNTY CERTIFIED LAND CORNER

CORNER NUMBER 72

**CERTIFICATE:**

I, Larry L. Austin, do hereby certify that on the 14th day of June, 2000, I found no evidence of the South 1/4 corner of Section 18, Town 3 North, Range 2 West, of the 4th Principal Meridian, and I re-established said corner according to the Wisconsin statutes as shown and described hereon.

Dated this 13th day of October, 2000

*Larry L. Austin*  
Larry L. Austin S-1903

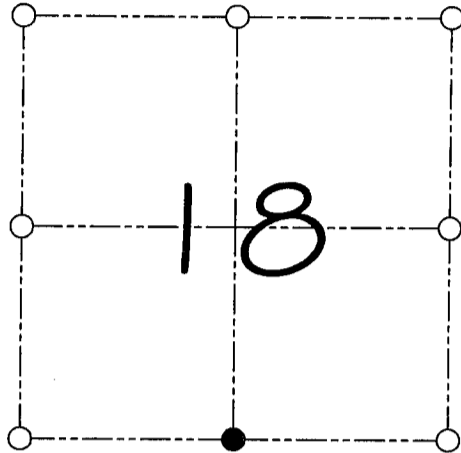


Grant County Cook

N 479026.2

E 834715.2

SEAL



● = CORNER LOCATION

SOUTH 1/4 CORNER OF  
SECTION 18, T 3 N R 2 W  
TOWN OF HARRISON

**HISTORY OF ORIGINAL CORNER ESTABLISHMENT:**

Corner was originally set in 1833 by Robert Clark.  
In 1882 J.C. Scott found both bearing trees.

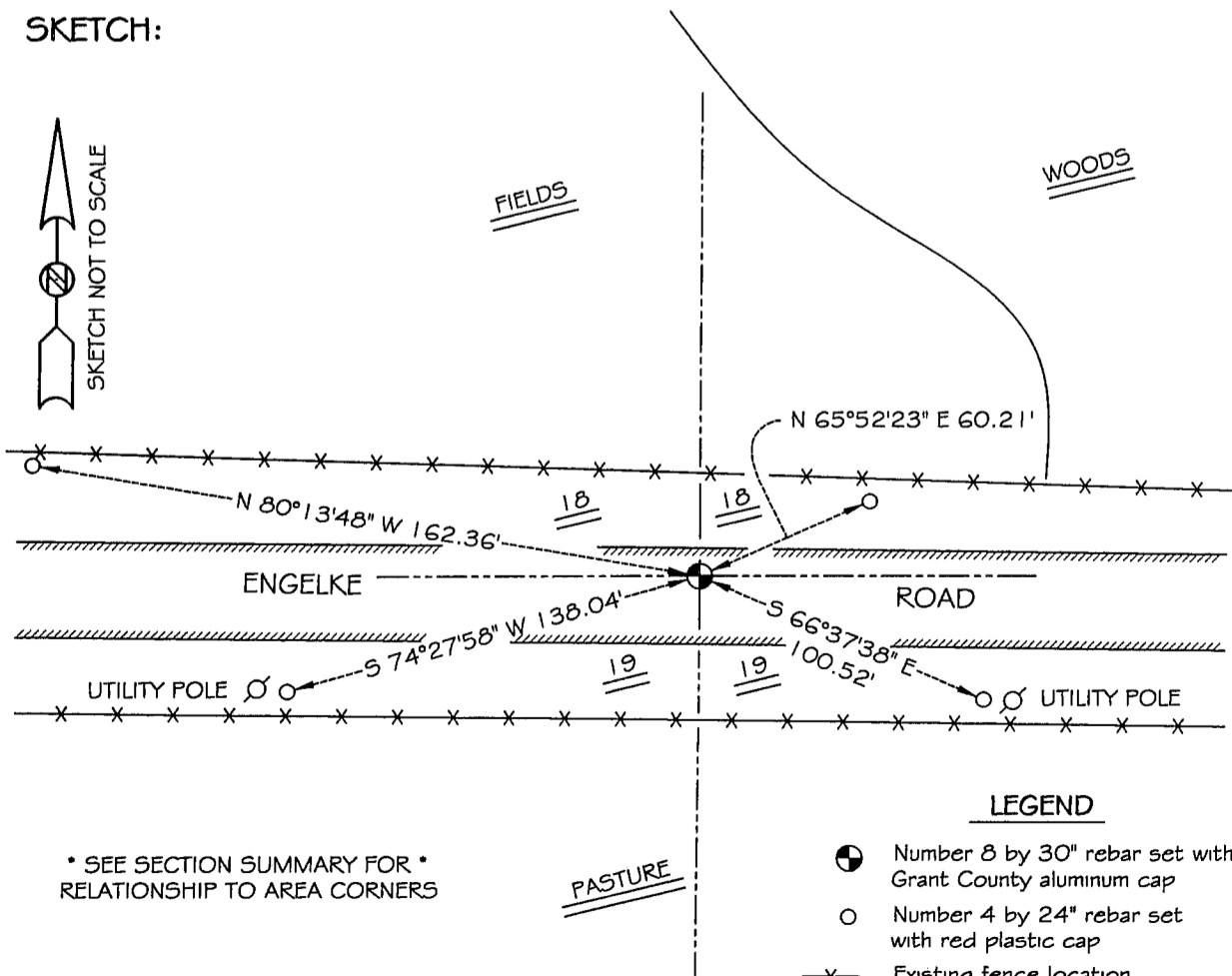
**DESCRIPTION OF CORNER EVIDENCE FOUND:**

I found no evidence to the location of the corner. I reset the corner proportionately along the South line of Section 18. Verified this location using E.D.M. & G.P.S. methods.

**DESCRIPTION OF CORNER AND WITNESS MONUMENTS, references and accessories used to perpetuate the original or re-established location of this corner**

WITNESS TO THE CORNER LOCATION: SHELBY BLINDERT & JERRY SPEILMAN

**SKETCH:**



\* SEE SECTION SUMMARY FOR \*  
RELATIONSHIP TO AREA CORNERS