

GRANT COUNTY CERTIFIED LAND CORNER

CORNER NUMBER 63

CERTIFICATE:

I, Larry L. Austin, do hereby certify that on the 12th day of September, 2000, I found evidence of the Northwest corner of Section 24, Town 3 North, Range 2 West, of the 4th Principal Meridian, and I re-established said corner according to the Wisconsin statutes as shown and described hereon.

Dated this 8th day of November, 2000

Larry L. Austin
Larry L. Austin S-1903

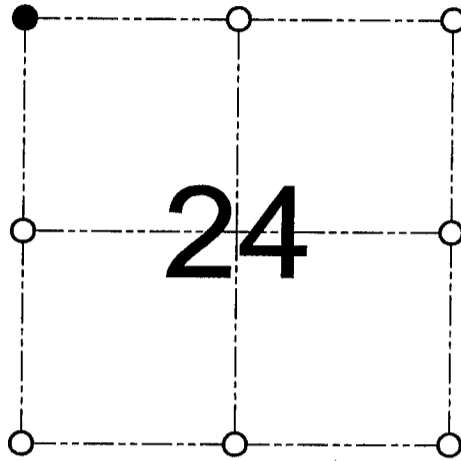
Grant County Cook.

N 479071.4

E 858458.5



SEAL



● = CORNER LOCATION

NORTHWEST CORNER OF
SECTION 24, T 3 N R 2 W
TOWN OF HARRISON

HISTORY OF ORIGINAL CORNER ESTABLISHMENT:

Corner was originally set in 1833 by Clark.
In 1873 McFall found the original corner.

DESCRIPTION OF CORNER EVIDENCE FOUND:

I found an existing East-West fence for Northing. Easting was established based on a projection of occupied lines from the South. Verified this location using EDM & GPS methods.

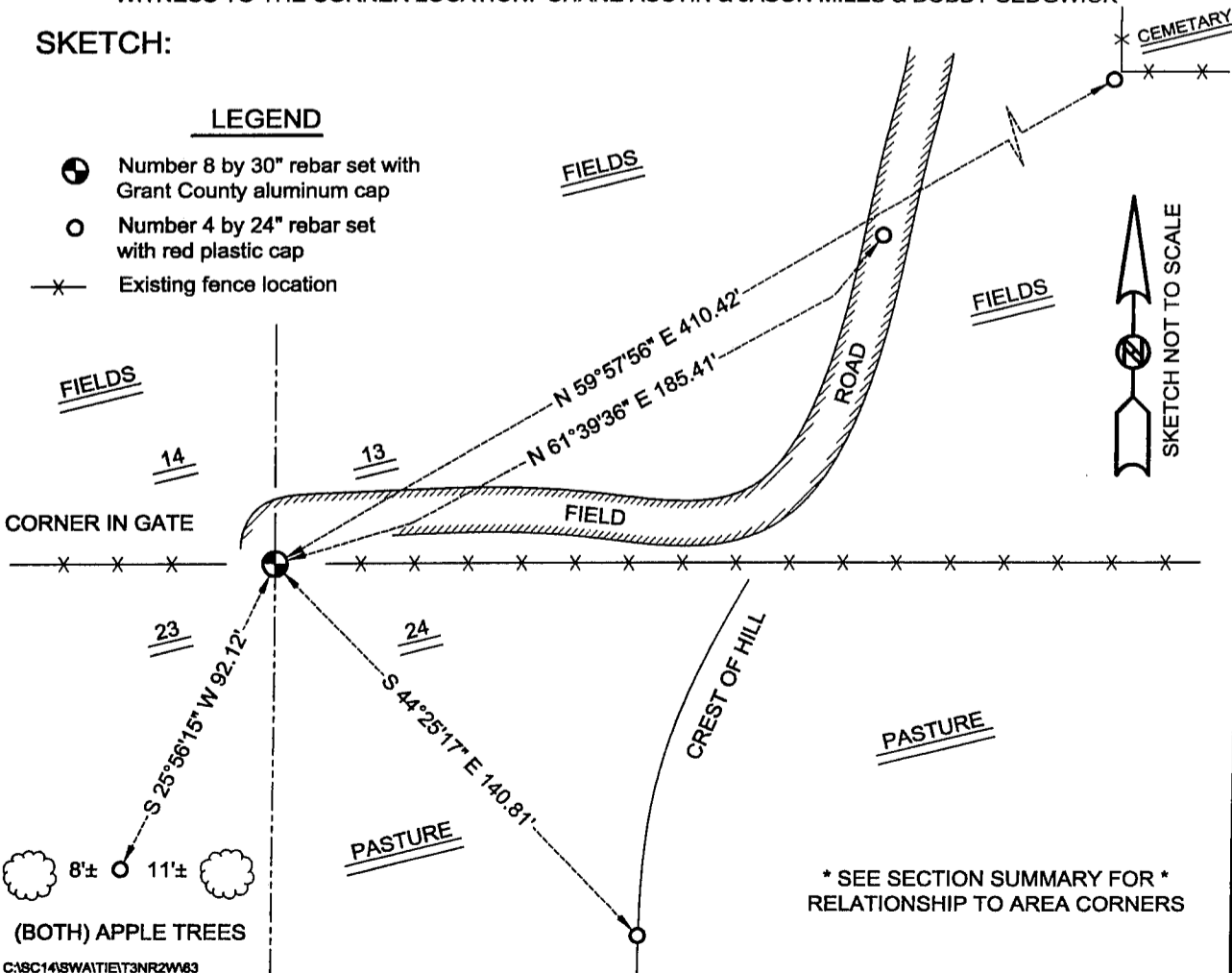
DESCRIPTION OF CORNER AND WITNESS MONUMENTS, references and accessories used to perpetuate the original or re-established location of this corner

WITNESS TO THE CORNER LOCATION: SHANE AUSTIN & JASON MILES & BOBBY SEDGWICK

SKETCH:

LEGEND

- ⊙ Number 8 by 30" rebar set with Grant County aluminum cap
- Number 4 by 24" rebar set with red plastic cap
- x— Existing fence location



* SEE SECTION SUMMARY FOR *
RELATIONSHIP TO AREA CORNERS