

GRANT COUNTY CERTIFIED LAND CORNER

CORNER NUMBER 54

CERTIFICATE:

I, Larry L. Austin, do hereby certify that on the 14th day of June, 2000, I found evidence of the West 1/4 corner of Section 18, Town 3 North, Range 2 West, of the 4th Principal Meridian, and I re-established said corner according to the Wisconsin statutes as shown and described hereon.

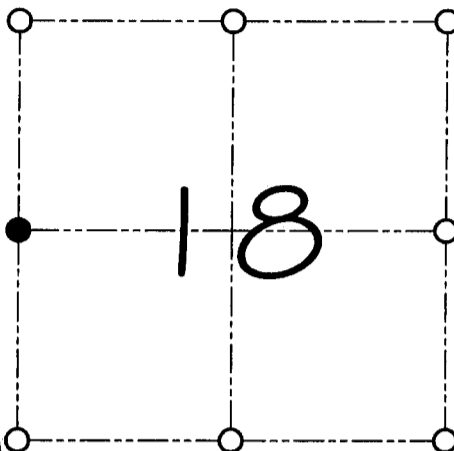
Dated this 13th day of October, 2000

Larry L. Austin
Larry L. Austin S-1903

Grant County Corr.

N 481693.2

E 832055.7



● = CORNER LOCATION

WEST 1/4 CORNER OF
SECTION 18, T 3 N R 2 W
TOWN OF HARRISON

HISTORY OF ORIGINAL CORNER ESTABLISHMENT:

Corner was never originally set. In 1882 J.C. Scott set the corner by measuring the whole line of Section 18.

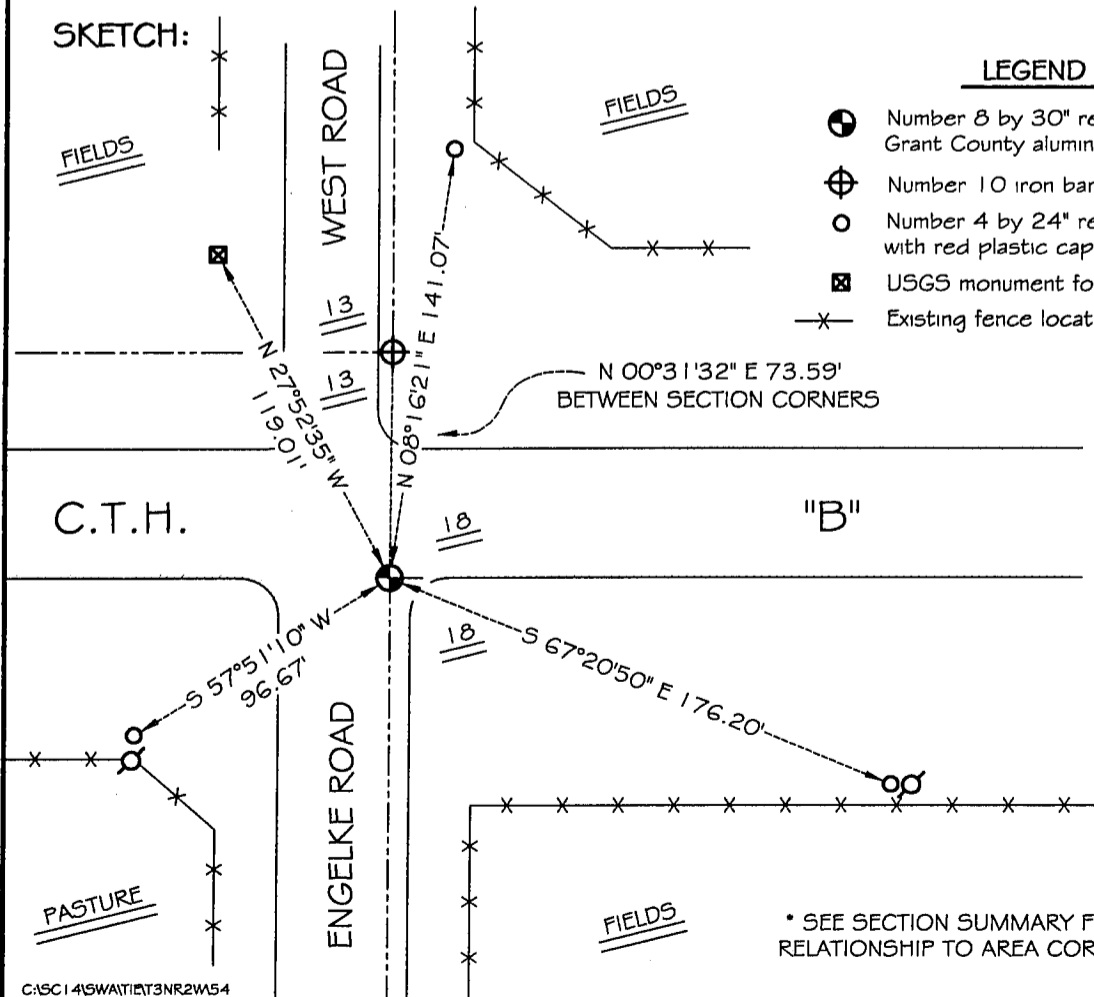
DESCRIPTION OF CORNER EVIDENCE FOUND:

I found the existing East 1/4 of Section 13 and set this corner at the proportional offset. Verified this location using E.D.M. & G.P.S. methods.

DESCRIPTION OF CORNER AND WITNESS MONUMENTS, references and accessories used to perpetuate the original or re-established location of this corner

WITNESS TO THE CORNER LOCATION: SHELBY BLINDERT & JERRY SPEILMAN

SKETCH:



LEGEND

- ⊕ Number 8 by 30" rebar set with Grant County aluminum cap
- ⊕ Number 10 iron bar found
- Number 4 by 24" rebar set with red plastic cap
- ⊠ USGS monument found
- x- Existing fence location



* SEE SECTION SUMMARY FOR *
RELATIONSHIP TO AREA CORNERS

C:\SC14\SWAT\T3NR2W54