

GRANT COUNTY CERTIFIED LAND CORNER

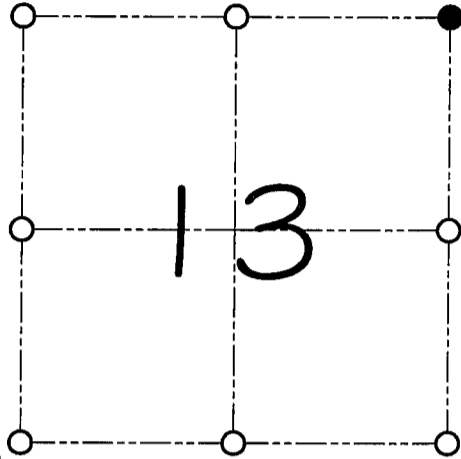
CORNER NUMBER 41

CERTIFICATE:

I, Larry L. Austin, do hereby certify that on the 16th day of March, 2000, I found evidence of the Northeast corner of Section 13, Town 3 North, Range 3 West, of the 4th Principal Meridian, and I re-established said corner according to the Wisconsin statutes as shown and described hereon.

Dated this 16th day of April, 2000

Larry L. Austin
Larry L. Austin S-1903



● = CORNER LOCATION

NORTHEAST CORNER OF SECTION 13, T 3 N R 3 W TOWN OF ~~ROSEMOUNT~~ HARRISON

HISTORY OF ORIGINAL CORNER ESTABLISHMENT:

Corner was originally set in 1832 by Lucius Lyon.
In 1898 Sampson found evidence of the corner.

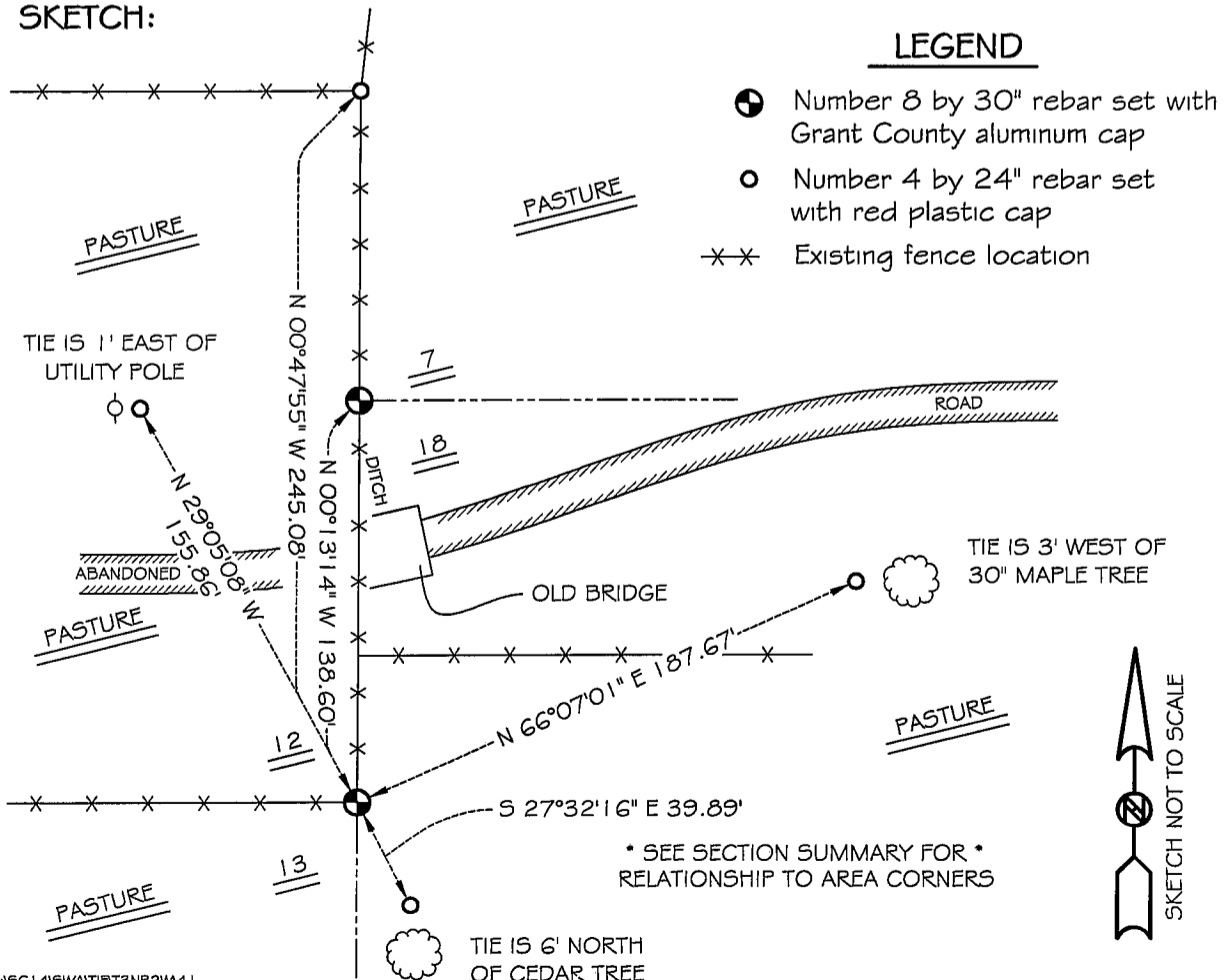
DESCRIPTION OF CORNER EVIDENCE FOUND:

I found an occupied fence corner and accepted its location after an E.D.M. & G.P.S. traverse of the area.

DESCRIPTION OF CORNER AND WITNESS MONUMENTS, references and accessories used to perpetuate the original or re-established location of this corner

WITNESS TO THE CORNER LOCATION: BOBBY SEDGWICK & SHELBY BLINDERT

SKETCH:



LEGEND

- Number 8 by 30" rebar set with Grant County aluminum cap
- Number 4 by 24" rebar set with red plastic cap
- ×× Existing fence location



* SEE SECTION SUMMARY FOR *
RELATIONSHIP TO AREA CORNERS