

U.S. PUBLIC LAND SURVEY MONUMENT RECORD - GRANT COUNTY, WI

Section 5, Town 3 North Range 2 West, Town of Harrison (a)

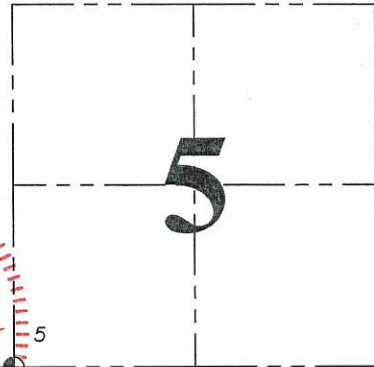
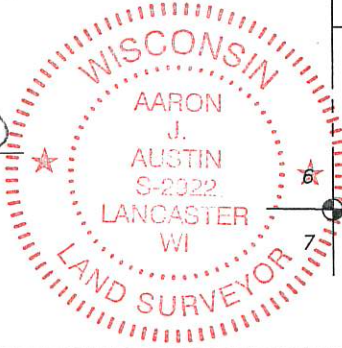
NOTE: This form is intended and designed to fulfill all requirements of the Wisconsin Administrative Code Chapter A-E 7.08, U.S. Public Land Survey Monument Record (3) (a) (b) (c) (d) (e) (f) (g) (h) (i).

CERTIFICATE: (i)

I, Aaron J. Austin, Wisconsin Professional Land Surveyor, do hereby certify that the corner location on this record was determined by me and/or under my direct supervision and that this U.S. Public Land Survey Monument Record is correct and complete to the best of my knowledge and belief.

Dated this 8th day of May, 2018.

Aaron J. Austin (signature)
Aaron J. Austin, S-2922



⊕ = CORNER LOCATION

HISTORY OF CORNER ESTABLISHMENT:

Robert Clark set the original corner in 1833.
Larry Austin set an Aluminum Monument at the corner and prepared a Survey Monument Record dated 10-15-1993.

DESCRIPTION OF CORNER EVIDENCE FOUND: (b) (f) (g) (h)

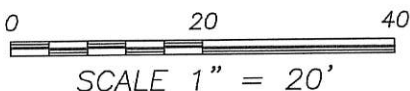
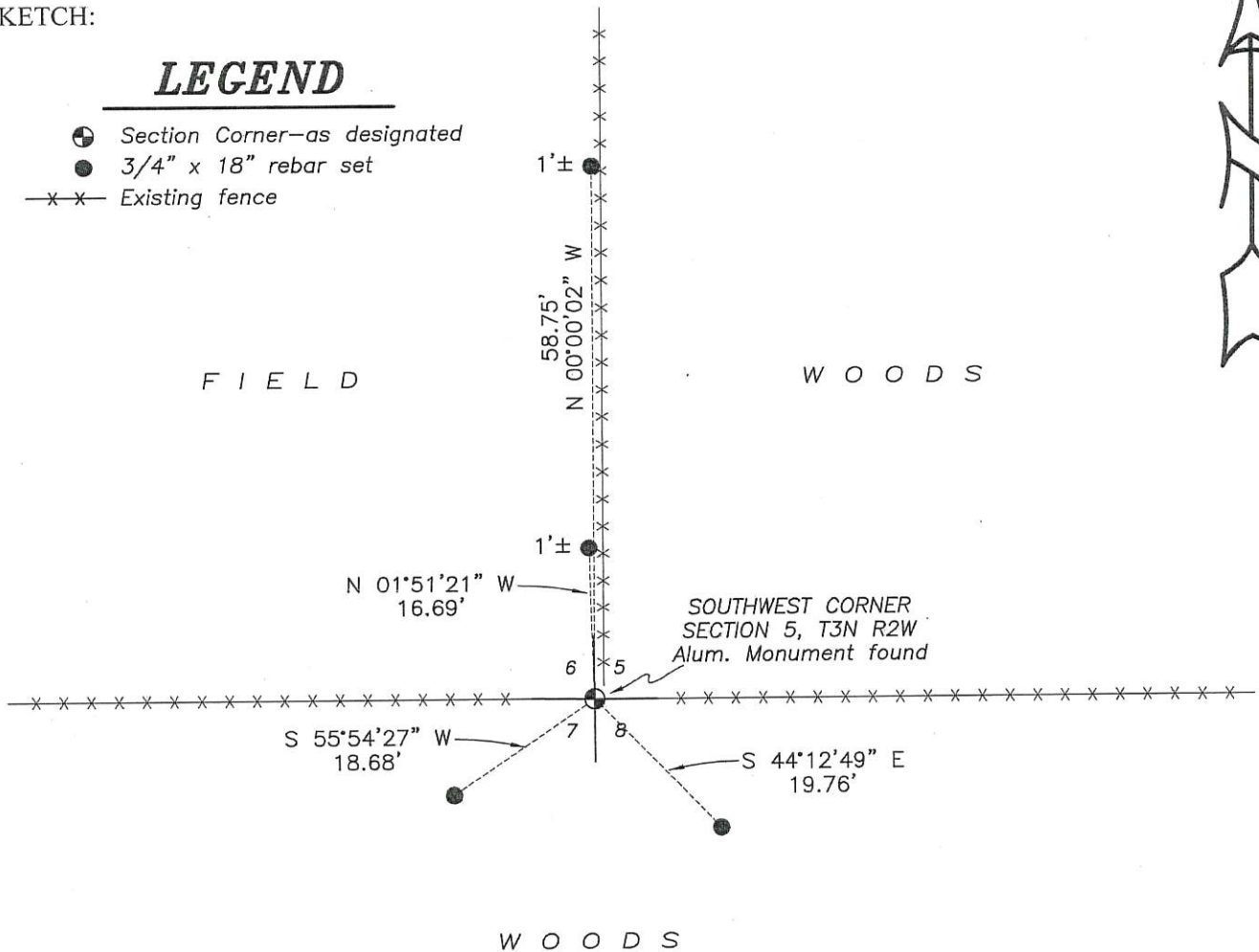
I found the Aluminum Monument as set by Larry Austin. I set 4 new witness corners after I verified the monument's location with G.P.S. and E.D.M. methods.

DESCRIPTION OF CORNER AND WITNESS MONUMENTS, references and accessories used to perpetuate the original or re-established location of this corner. (c) (d) (e)
Witnesses to corner location Shane Austin.

SKETCH:

LEGEND

- ⊕ Section Corner—as designated
● 3/4" x 18" rebar set
-x-x- Existing fence

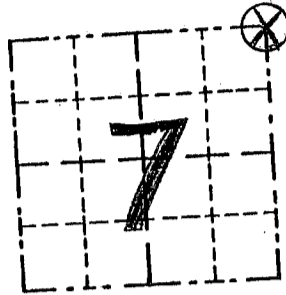


GRANT COUNTY

Survey Monument Record

TYPE OF MONUMENT ALUMINUM MONUMENT
STATE PLANE COORDINATES: N _____
E _____
ELEVATION — M.S.L. DATUM: _____
THETA ANGLE: _____
FIELD BOOK: 92-01
PAGE 38

CORNER NO. 31
SECTION 7
TOWN 3 N
RANGE 2 W



LOCATION
(Indicated by "X")

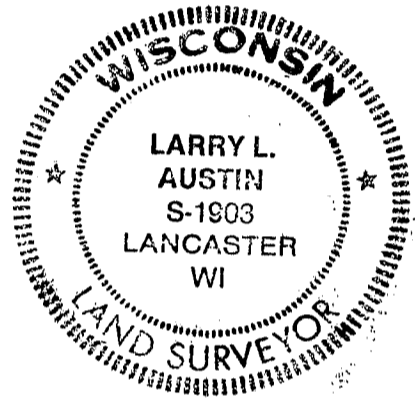
BASIS FOR MONUMENT LOCATION

(Use reverse side if necessary)

Show info such as: History of corner, with reference to Vol. and pg., dates, surveyor; exact description of monument replaced; if location computed, by taped or EDM traverse; landowner, remarks, etc.

MONUMENT WAS PLACED
BASED ON OCCUPATIONAL
EVIDENCE & VERIFIED BY
EDM TRAVERSE.

SEAL:



CERTIFIED CORRECT

Larry L. Austin
Registered Land Surveyor

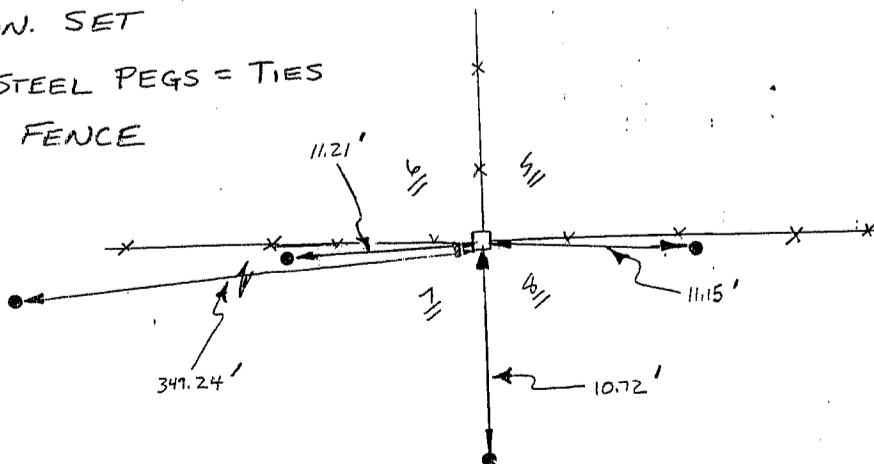
DATE: 10/15/93

TIE SKETCH

Show at least three (3) ties and monument

LEGEND

- ALUM. MON. SET
- 3/8" x 12" STEEL PEGS = TIES
- X — EXISTING FENCE



NO SCALE