

U.S. PUBLIC LAND SURVEY MONUMENT RECORD - GRANT COUNTY, WI

Section 5, Town 3 North Range 2 West, Town of Harrison (a)

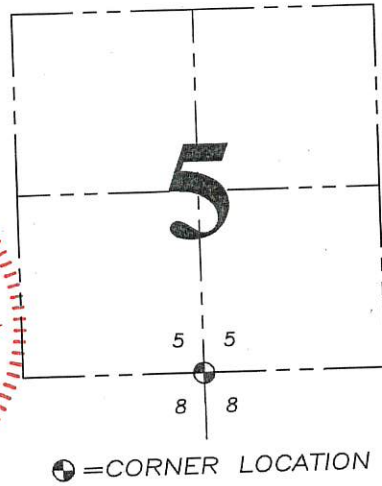
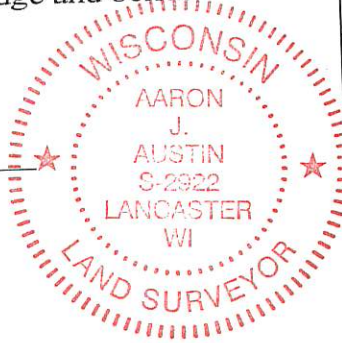
NOTE: This form is intended and designed to fulfill all requirements of the Wisconsin Administrative Code Chapter A-E 7.08, U.S. Public Land Survey Monument Record (3) (a) (b) (c) (d) (e) (f) (g) (h) (i).

CERTIFICATE: (i)

I, Aaron J. Austin, Wisconsin Professional Land Surveyor, do hereby certify that the corner location on this record was determined by me and/or under my direct supervision and that this U.S. Public Land Survey Monument Record is correct and complete to the best of my knowledge and belief.

Dated this 8th day of May, 2018.

Aaron J. Austin
Aaron J. Austin, S-2922



HISTORY OF CORNER ESTABLISHMENT:

Robert Clark set the original corner in 1833.
Larry Austin set the corner and prepared a Survey Monument Record dated 10-15-1993.

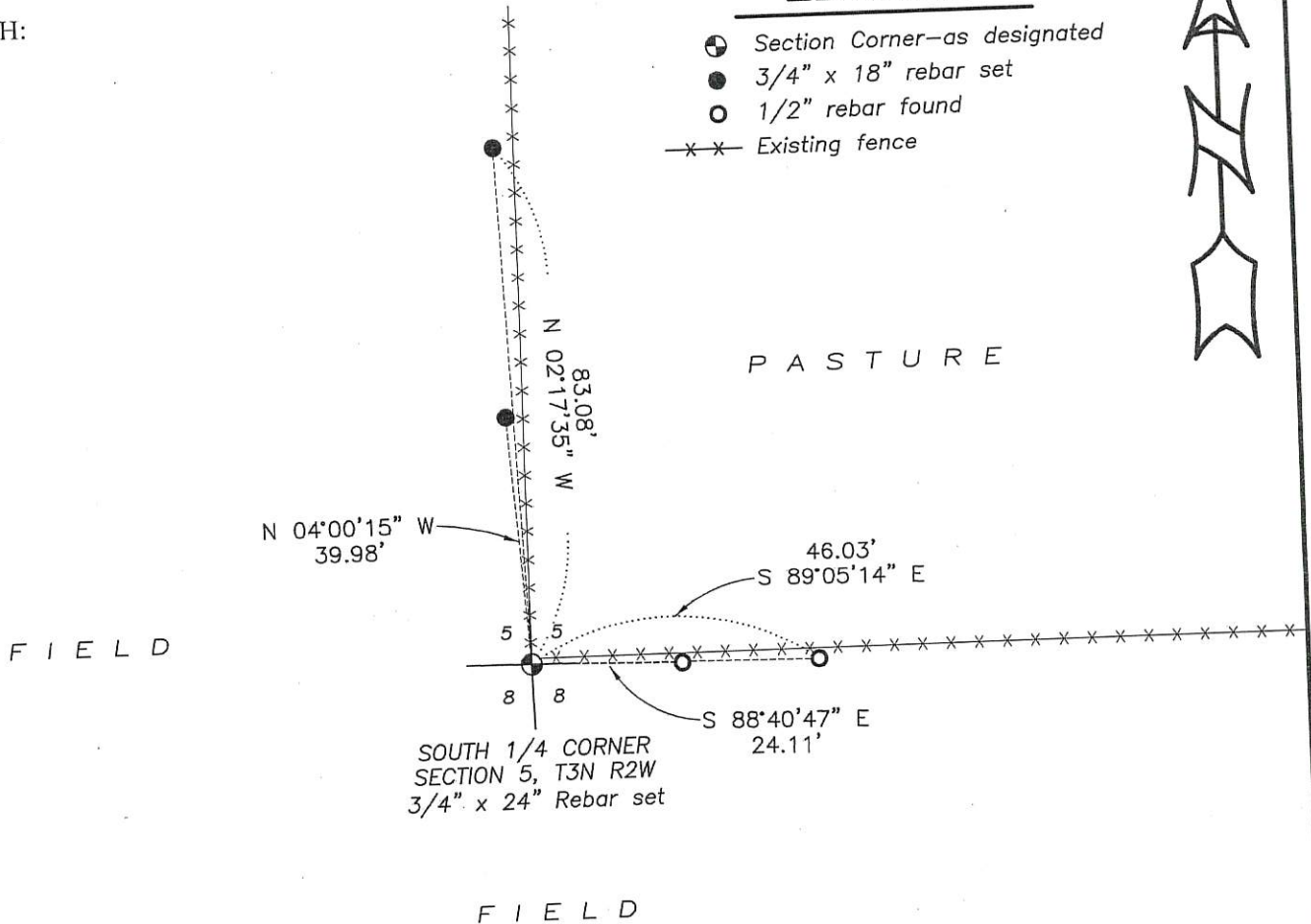
DESCRIPTION OF CORNER EVIDENCE FOUND: (b) (f) (g) (h)

I found the Aluminum Monument as set by Austin. I found 2 witness monuments and set 2 new witness corners after I verified the monument's location with G.P.S. and E.D.M. methods.

DESCRIPTION OF CORNER AND WITNESS MONUMENTS, references and accessories used to perpetuate the original or re-established location of this corner. (c) (d) (e)

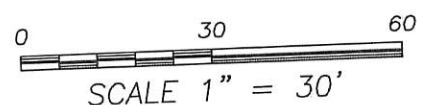
Witnesses to corner location Shane Austin.

SKETCH:



LEGEND

- ⊕ Section Corner—as designated
- 3/4" x 18" rebar set
- 1/2" rebar found
- x-x- Existing fence



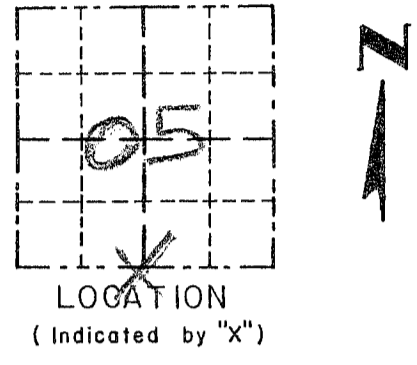
SCALE 1" = 30'

Survey Monument Record

CORNER NO. 30
 SECTION 05
 TOWN 3N
 RANGE 2W

TYPE OF MONUMENT 3/4" X 24" IRON BAR
SET

FIELD BOOK: 97-13
 PAGE (13)

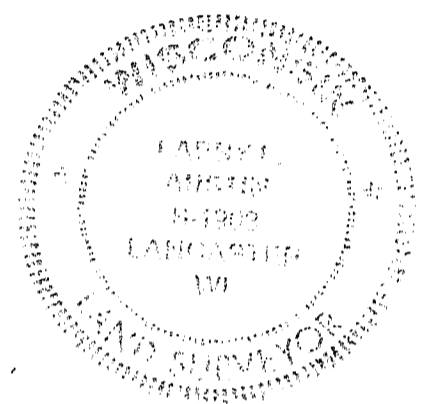


BASIS FOR MONUMENT LOCATION

(Use reverse side if necessary)
 Show info such as: History of corner, with reference to Vol. and pg., dates, surveyor; exact description of monument replaced; if location computed, by taped or EDM traverse; landowner, remarks, etc.

SEAL:

CORNER WAS SET IN 1833 BY ROBERT CLARK. IN 1855 OVERTON FOUND ORIGINAL CORNER. IN 1881 J. SCOTT FOUND ORIGINAL CORNER AND TIED TO NEW BEARING TREE. I FOUND A OCCUPIED FENCE CORNER. ACCEPTED ITS LOCATION AFTER EDM TRAVERSE OF AREA.



CERTIFIED CORRECT
Larry A. Aust
 Registered Land Surveyor
 DATE: 9-12-97

TIE SKETCH

Show at least three (3) ties and monument

LEGEND

- ⊕ 3/4" X 24" IRON BAR SET
- 1/2" X 15" IRON BAR SET
- EXISTING FIELDS FENCE

