

U.S. PUBLIC LAND SURVEY MONUMENT RECORD - GRANT COUNTY, WI

Section 8, Town 3 North Range 2 West, Town of Harrison (a)

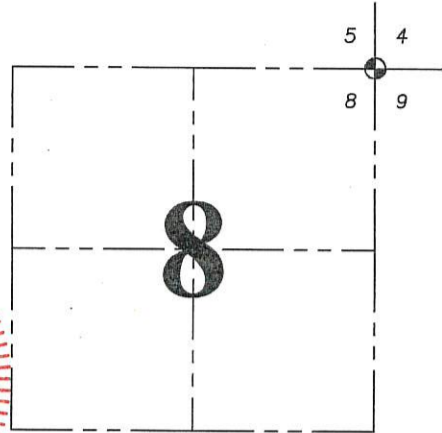
NOTE: This form is intended and designed to fulfill all requirements of the Wisconsin Administrative Code Chapter A-E 7.08, U.S. Public Land Survey Monument Record (3) (a) (b) (c) (d) (e) (f) (g) (h) (i).

CERTIFICATE: (i)

I, Aaron J. Austin, Wisconsin Professional Land Surveyor, do hereby certify that the corner location on this record was determined by me and/or under my direct supervision and that this U.S. Public Land Survey Monument Record is correct and complete to the best of my knowledge and belief.

Dated this 8th day of May, 2018.

Aaron J. Austin
Aaron J. Austin, S-2922



⊕ = CORNER LOCATION

HISTORY OF CORNER ESTABLISHMENT:

Robert Clark set the original corner in 1833.

David Davis set a 3/4" rebar at the corner's location and prepared a Survey Monument Record dated 6-10-1981.

DESCRIPTION OF CORNER EVIDENCE FOUND: (b) (f) (g) (h)

I found the 3/4" rebar as set by Davis. I found a witness corner and set 3 new witness corners after I verified the monument's location with E.D.M. and G.P.S. methods.

DESCRIPTION OF CORNER AND WITNESS MONUMENTS, references and accessories used to perpetuate the original or re-established location of this corner. (c) (d) (e)

Witnesses to corner location Shane Austin.

SKETCH:

LEGEND

- ⊕ Section Corner—as designated
- 3/4" x 18" rebar set
- 3/4" rebar found
- Existing wood post
- x-x- Approximate location of fence

W O O D S

P A S T U R E

22.71'
S 68°26'29" W

6"

32.69'
N 00°18'30" E

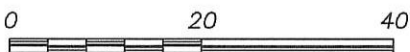
43.30'
N 55°17'06" E

32.90'
S 75°27'13" E

NORTHEAST CORNER
SECTION 8, T3N R2W
3/4" Rebar found

W O O D S

P A S T U R E



SCALE 1" = 20'



CERTIFIED LAND CORNER

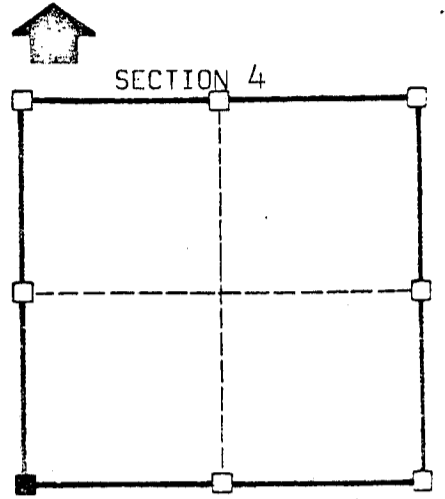
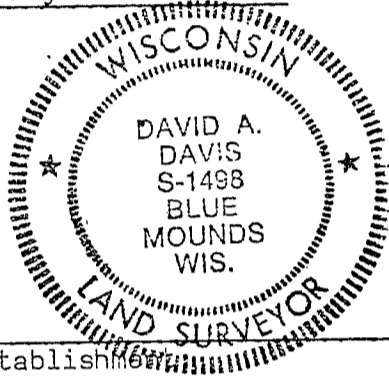
Sec. 4, Town 3 N, Range 2 W

STATE OF WISCONSIN)
 COUNTY OF GRANT) S.S.

CERTIFICATE

I, David A. Davis, do hereby certify that on the 10th day of June 1981, I found ~~(evidence)~~ (no evidence) of the Southwest corner of Section 4, T 3 N, R 2 W, Fourth Principal Meridian, and I re-established said corner according to the Wisconsin Statutes as shown and described hereon.

Dated this 11 day of June 1981
David A. Davis
 registered land surveyor.
 Title



SECTION 4
 ■ = corner location
 T 3 N R 2 W
 Town of: Harrison

Seal

History of original corner establishment:
 None since original government survey.

Description of corner evidence found:
 Fence north-south on line with fence to west.

Description of corner and witness monuments, references and accessories used to perpetuate the original or re-established location of this corner:

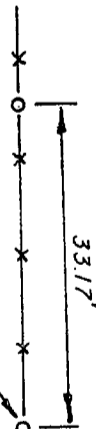
Witnesses to corner location:
Jim Olson
Garth Althaus

Sketch:

26" WHITE OAK



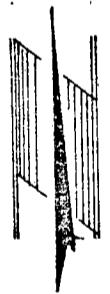
40.11'



33.17'

20.90'

32" BURR OAK



Legend

- x-x- Fenceline
- o No. 6 (3/4" Ø) Rebar
- Railroad Spike

SURVEY CONTROL ORDER

Horizontal		WISCONSIN COORDINATE SYSTEM		
Vertical	East (X)	North (Y)	Elevation (Z)	Zone
Corner				
Control Sta. Name				