

JAN 31 2018

32021

# GRANT COUNTY CERTIFIED LAND CORNER

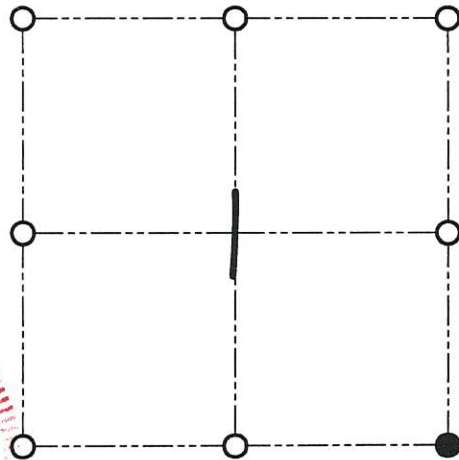
CORNER NUMBER 21

### CERTIFICATE:

I, Larry L. Austin, do hereby certify that on the 3rd day of August, 2000, I found no evidence of the Southeast corner of Section 1, Town 3 North, Range 2 West, of the 4th Principal Meridian, and I re-established said corner according to the Wisconsin statutes as shown and described hereon.

Dated this 22nd day of September, 2000

*Larry L. Austin*  
Larry L. Austin S-1903



● = CORNER LOCATION

SOUTHEAST CORNER OF  
SECTION 1, T 3 N R 2 W  
TOWN OF HARRISON

### HISTORY OF ORIGINAL CORNER ESTABLISHMENT:

Corner was originally set in 1833 by Robert Clark.

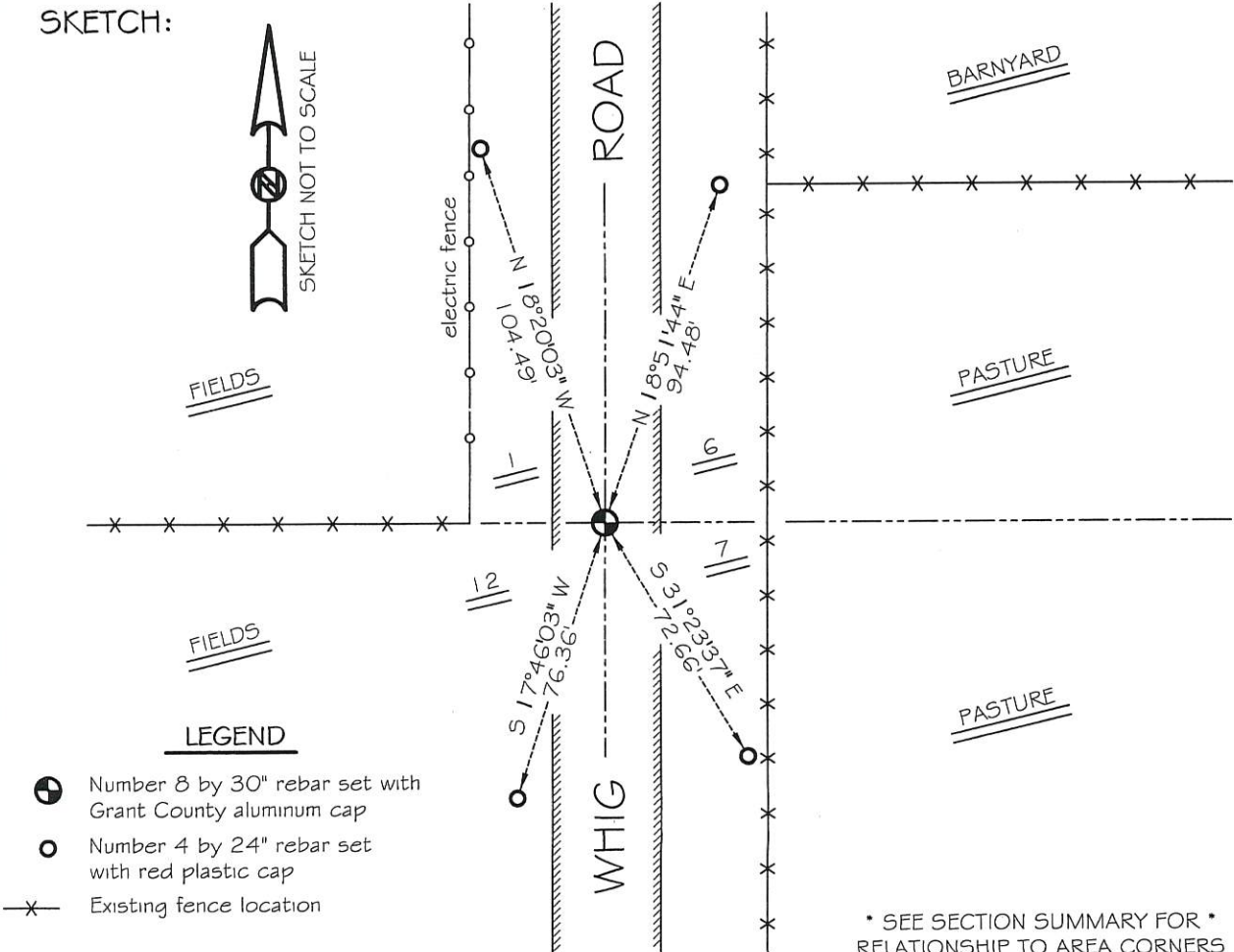
### DESCRIPTION OF CORNER EVIDENCE FOUND:

I found and accepted an occupied location after an E.D.M. & G.P.S. traverse of the area.

### DESCRIPTION OF CORNER AND WITNESS MONUMENTS, references and accessories used to perpetuate the original or re-established location of this corner

WITNESS TO THE CORNER LOCATION: SHANE AUSTIN & JERRY SPEILMAN

### SKETCH:



- LEGEND**
- Number 8 by 30" rebar set with Grant County aluminum cap
  - Number 4 by 24" rebar set with red plastic cap
  - x- Existing fence location

\* SEE SECTION SUMMARY FOR \*  
RELATIONSHIP TO AREA CORNERS