

U.S. PUBLIC LAND SURVEY MONUMENT RECORD - GRANT COUNTY, WI

Section 1, Town 3 North Range 2 West, Town of Harrison (a)

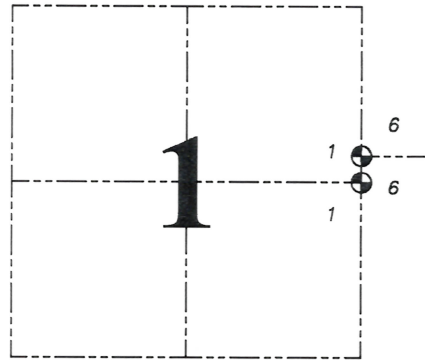
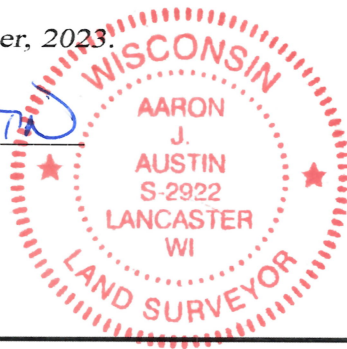
NOTE: This form is intended and designed to fulfill all requirements of the Wisconsin Administrative Code Chapter A-E 7.08, U.S. Public Land Survey Monument Record (3) (a) (b) (c) (d) (e) (f) (g) (h) (i).

CERTIFICATE: (i)

I, Aaron J. Austin, Wisconsin Professional Land Surveyor, do hereby certify that the corner location on this record was determined by me and/or under my direct supervision and that this U.S. Public Land Survey Monument Record is correct and complete to the best of my knowledge and belief.

Dated this 21st day of December, 2023.

Aaron J. Austin
Aaron J. Austin, S-2922



● = CORNER LOCATION

Grant County Coordinates:
NAD 83 (2011)
Northing: 492,200.42
Easting: 863,508.42

HISTORY OF CORNER ESTABLISHMENT:

Original corner was set in 1832 by Lucius Lyon.
Larry Austin set a 1" Rebar with a Grant County Aluminum Cap and prepared a Survey Monument Record dated 5-30-1997.

DESCRIPTION OF CORNER EVIDENCE FOUND: (b) (f) (g) (h)

I did not find the Aluminum Capped Rebar Larry set. I set a 1" Rebar from the existing four witness corners after I verified the Monument's location with G.P.S. and E.D.M. methods.

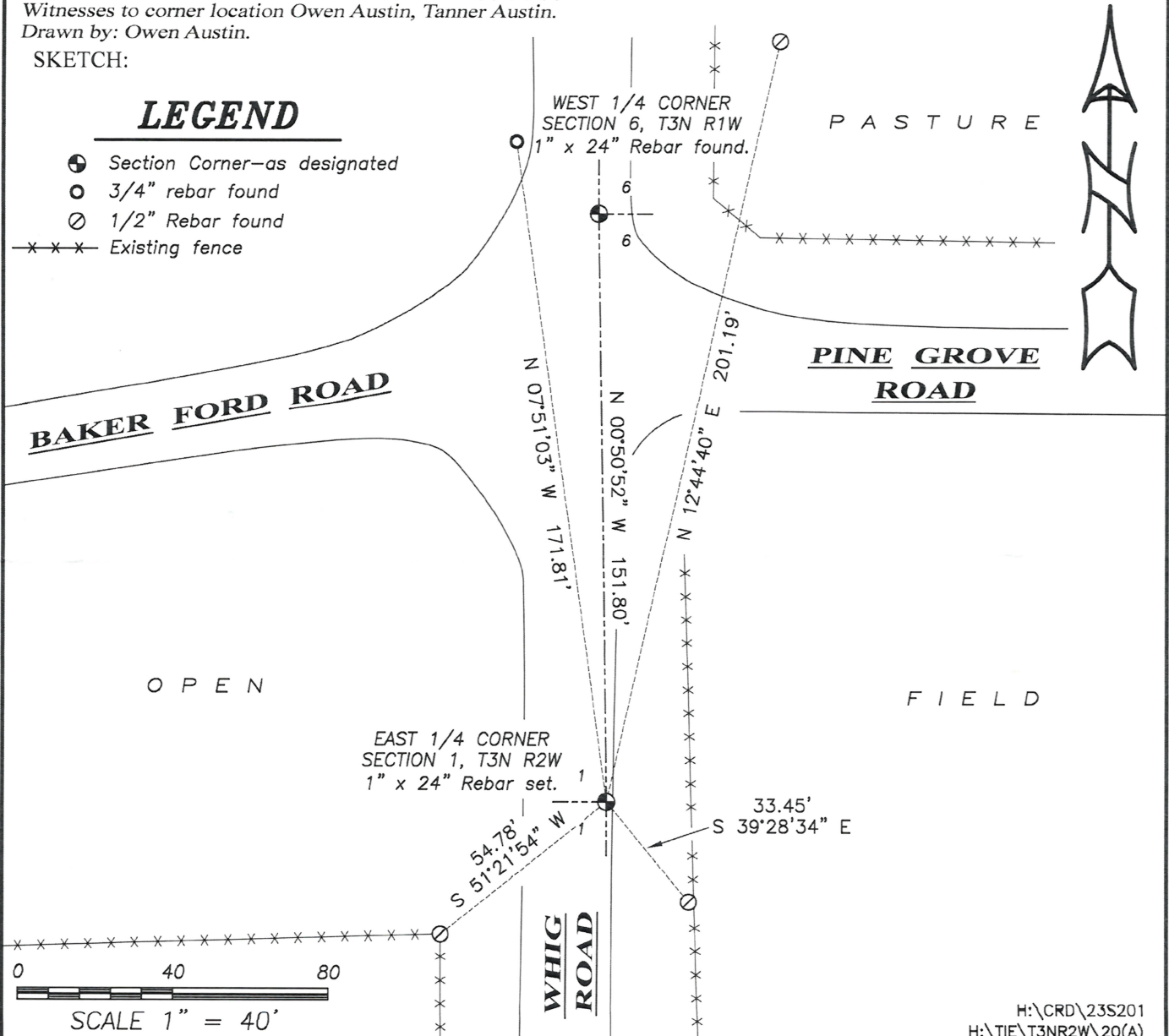
DESCRIPTION OF CORNER AND WITNESS MONUMENTS, references and accessories used to perpetuate the original or re-established location of this corner. (c) (d) (e)

Witnesses to corner location Owen Austin, Tanner Austin.
Drawn by: Owen Austin.

SKETCH:

LEGEND

- Section Corner—as designated
- 3/4" rebar found
- 1/2" Rebar found
- x—x— Existing fence



GRANT COUNTY CERTIFIED LAND CORNER

CORNER NUMBER 20

CERTIFICATE:

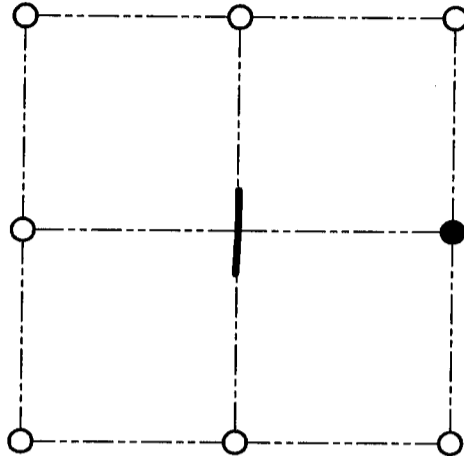
I, Larry L. Austin, do hereby certify that on the 3rd day of August, 2000, I found evidence of the East 1/4 corner of Section 1, Town 3 North, Range 2 West, of the 4th Principal Meridian, and I re-established said corner according to the Wisconsin statutes as shown and described hereon.

Dated this 22nd day of September, 2000

Larry L. Austin
Larry L. Austin S-1903



SEAL



● = CORNER LOCATION

EAST 1/4 CORNER OF
SECTION 1, T 3 N R 2 W
TOWN OF HARRISON

HISTORY OF ORIGINAL CORNER ESTABLISHMENT:

Corner was originally set in 1832 by Lucius Lyon.
Geo Stunts tied to the corner and found the original.
In 1988 I set a 1" iron bar at this location.

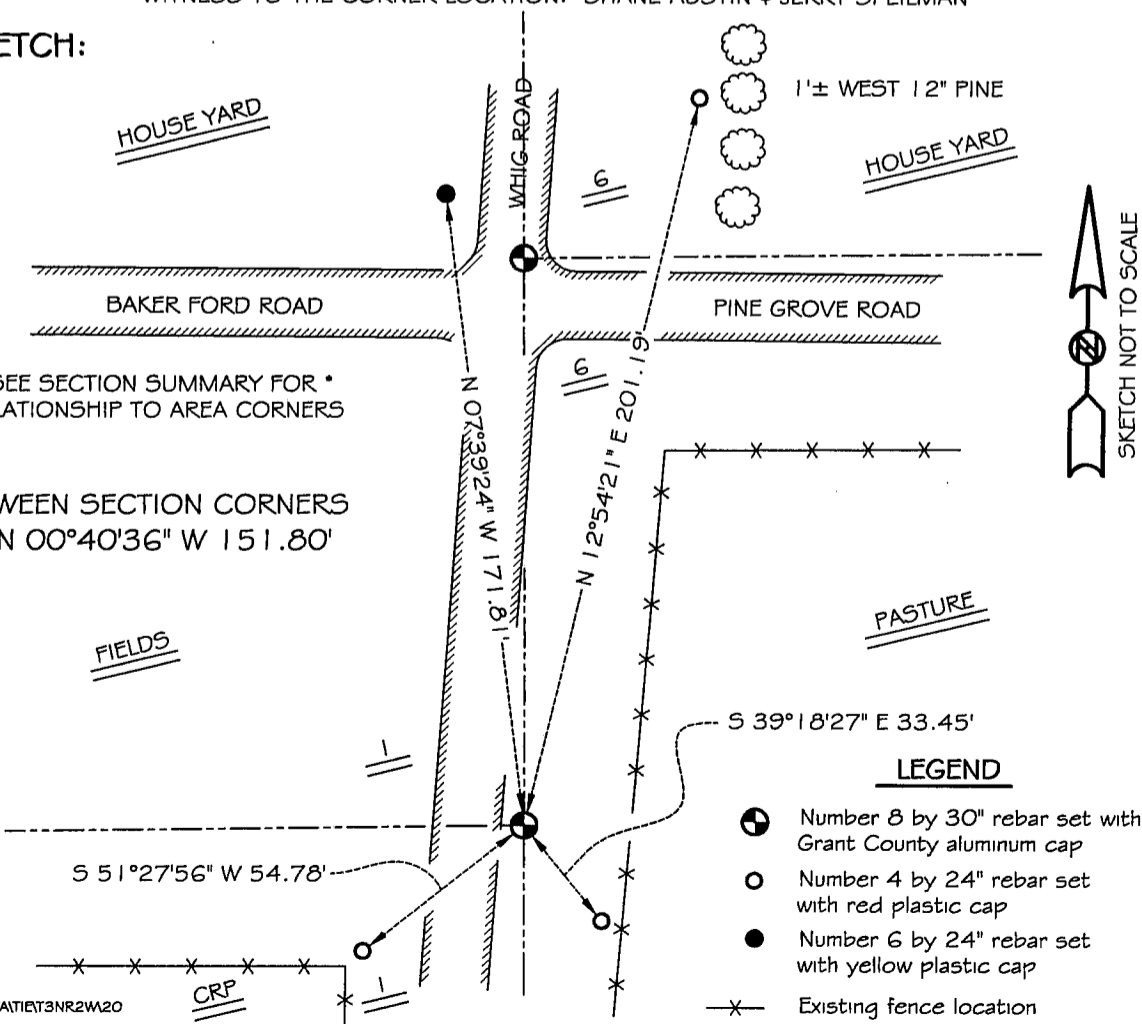
DESCRIPTION OF CORNER EVIDENCE FOUND:

I was unable to locate the iron bar. I reset
it based on evidence of the survey. Verified this location using E.D.M. & G.P.S. methods.

DESCRIPTION OF CORNER AND WITNESS MONUMENTS, references and accessories used to perpetuate the original or re-established location of this corner

WITNESS TO THE CORNER LOCATION: SHANE AUSTIN & JERRY SPEILMAN

SKETCH:



LEGEND

- Number 8 by 30" rebar set with Grant County aluminum cap
- Number 4 by 24" rebar set with red plastic cap
- Number 6 by 24" rebar set with yellow plastic cap
- x— Existing fence location