

# GRANT COUNTY CERTIFIED LAND CORNER

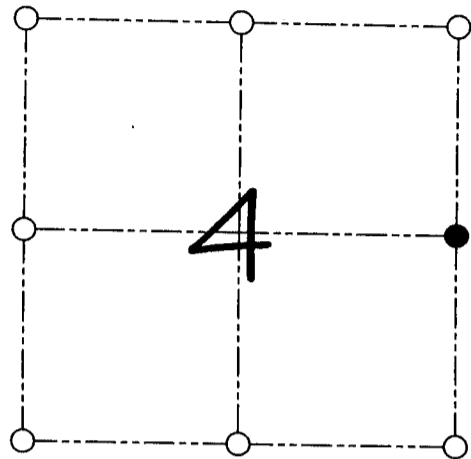
CORNER NUMBER 17

**CERTIFICATE:**

I, Larry L. Austin, do hereby certify that on the 11th day of November, 1995, I found evidence of the East 1/4 corner of Section 4, Town 3 North, Range 2 West, of the 4th Principal Meridian, and I re-established said corner according to the Wisconsin statutes as shown and described hereon.

Dated this 9th day of June, 2000

*Larry L. Austin*  
Larry L. Austin S-1903



● = CORNER LOCATION

EAST 1/4 CORNER OF  
SECTION 4, T 3 N R 2 W  
TOWN OF HARRISON

**HISTORY OF ORIGINAL CORNER ESTABLISHMENT:**

Corner was originally set in 1833 by Robert Clark.  
In 1855 Overton tied to the corner.

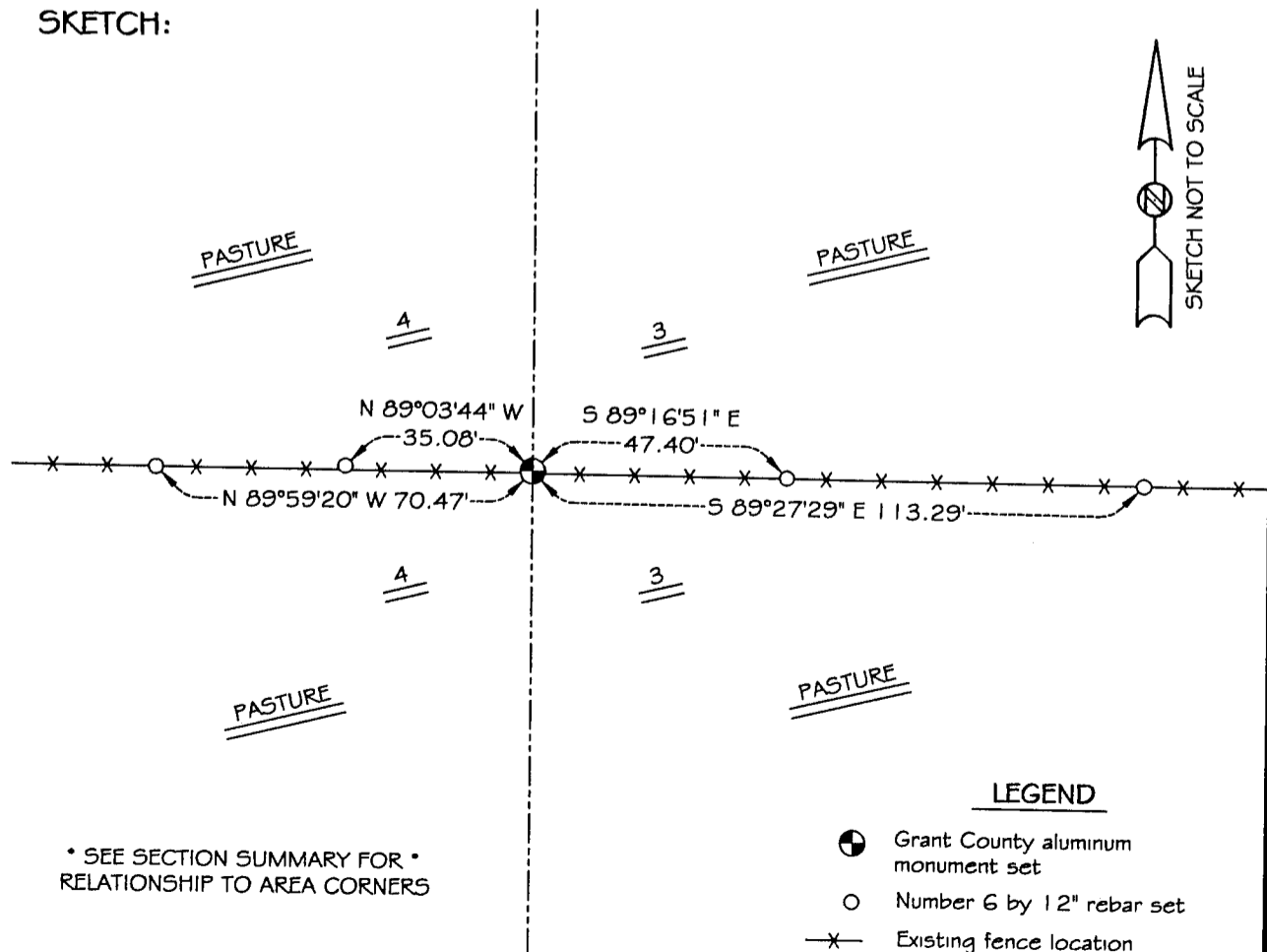
**DESCRIPTION OF CORNER EVIDENCE FOUND:**

I found an existing East-West fence for Northing.  
Easting was established by a straight line between the  
Northeast and Southeast corners. Verified this location using E.D.M. & G.P.S. methods.

**DESCRIPTION OF CORNER AND WITNESS MONUMENTS, references and accessories used to perpetuate the original or re-established location of this corner**

WITNESS TO THE CORNER LOCATION: BOBBY SEDGWICK

**SKETCH:**



\* SEE SECTION SUMMARY FOR \*  
RELATIONSHIP TO AREA CORNERS

**LEGEND**

- Grant County aluminum monument set
- Number 6 by 1/2" rebar set
- x— Existing fence location