

U.S. PUBLIC LAND SURVEY MONUMENT RECORD - GRANT COUNTY, WI

Section 5, Town 3 North Range 2 West, Town of Harrison (a)

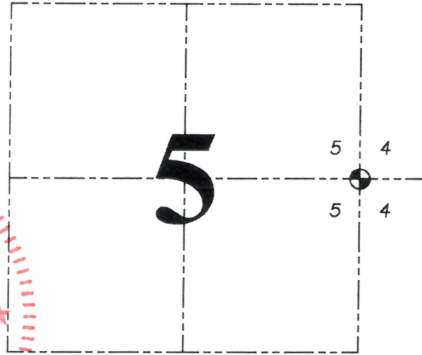
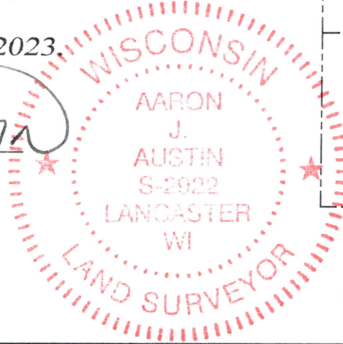
NOTE: This form is intended and designed to fulfill all requirements of the Wisconsin Administrative Code Chapter A-E 7.08, U.S. Public Land Survey Monument Record (3) (a) (b) (c) (d) (e) (f) (g) (h) (i).

CERTIFICATE: (i)

I, Aaron J. Austin, Wisconsin Professional Land Surveyor, do hereby certify that the corner location on this record was determined by me and/or under my direct supervision and that this U.S. Public Land Survey Monument Record is correct and complete to the best of my knowledge and belief.

Dated this 14th day of September, 2023.

*Aaron J. Austin*  
Aaron J. Austin, S-2922



⊙ = CORNER LOCATION

Grant County Coordinates:  
NAD 83 (2011)  
Northing: 492,182.80  
Easting: 842,459.81

HISTORY OF CORNER ESTABLISHMENT:

Original corner was set in 1832 by Robert Clark.  
David Davis set a 1" Iron Pipe in a 2 1/2" Iron Pipe and prepared a Survey Monument Record dated 6-11-1981.

DESCRIPTION OF CORNER EVIDENCE FOUND: (b) (f) (g) (h)

I found the 1" Iron Pipe in a 2 1/2" Iron Pipe and one witness corner Davis set. I set three additional witness corners after I verified the Monument's location with G.P.S. and E.D.M. methods.

DESCRIPTION OF CORNER AND WITNESS MONUMENTS, references and accessories used to perpetuate the original or re-established location of this corner. (c) (d) (e)

Witnesses to corner location Owen Austin, Tanner Austin.  
Drawn by: Owen Austin.

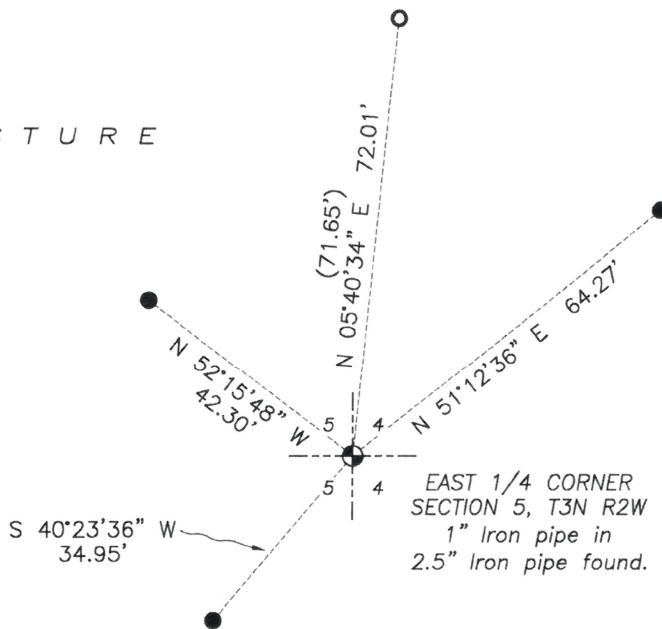
SKETCH:

LEGEND

- ⊙ Section Corner—as designated
- 3/4" rebar found
- 3/4" x 18" rebar set
- ( ) Recorded as



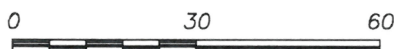
P A S T U R E



EAST 1/4 CORNER  
SECTION 5, T3N R2W  
1" Iron pipe in  
2.5" Iron pipe found.

P A S T U R E

P A S T U R E



SCALE 1" = 30'

CERTIFIED LAND CORNER

Section 4, T3N, R2W

STATE OF WISCONSIN )  
COUNTY OF GRANT ) S.S.

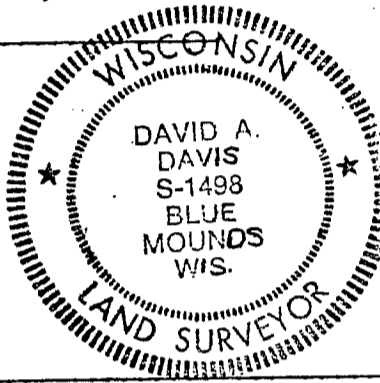
CERTIFICATE

I, David A. Davis, do hereby certify that on the 10th day of June 1981, I found (~~evidence~~) (~~no~~ evidence) of the West 1/4 corner of Section 4, T 3 N, R 2 W, Fourth Principal Meridian, and I re-established said corner according to the Wisconsin Statutes as shown and described hereon.

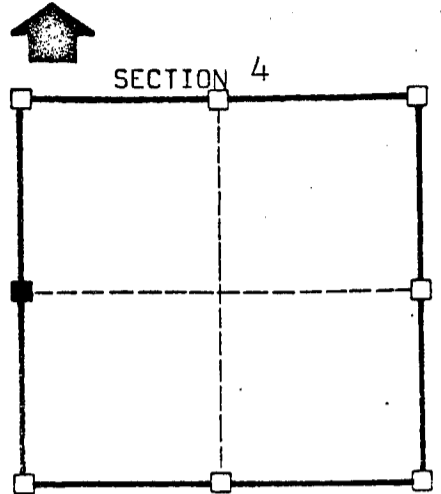
Dated this 11 day of June 1981

David A. Davis  
registered land surveyor.

Title



Seal



■ = corner location

T 3 N R 2 W

Town of: Harrison

History of original corner establishment:

None since original government survey.

Description of corner evidence found:

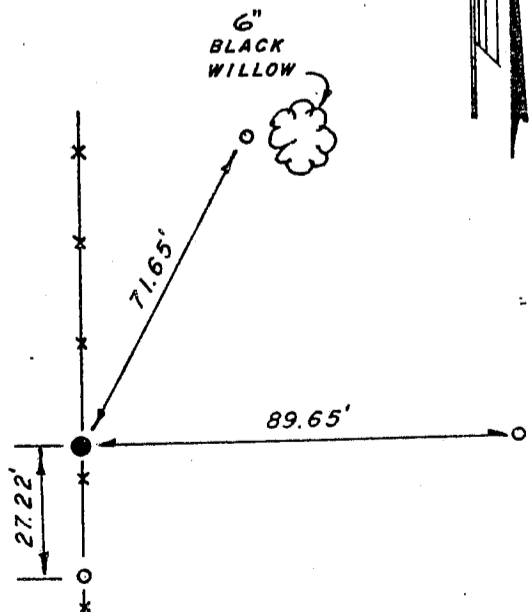
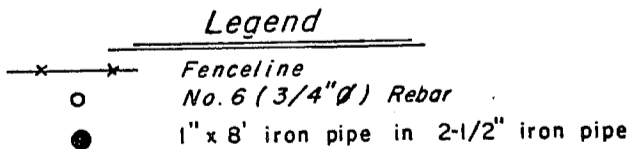
Fence north-south and old fence east. Set at fence corner.

Description of corner and witness monuments, references and accessories used to perpetuate the original or re-established location of this corner:

Witnesses to corner location:

Jim Olson  
Garth Althaus

Sketch:



SURVEY CONTROL ORDER

Horizontal
Vertical

WISCONSIN COORDINATE SYSTEM

Corner	East (X)	North (Y)	Elevation (Z)	Zone
Control Sta. Name				