

GRANT COUNTY CERTIFIED LAND CORNER

CORNER NUMBER 09

CERTIFICATE:

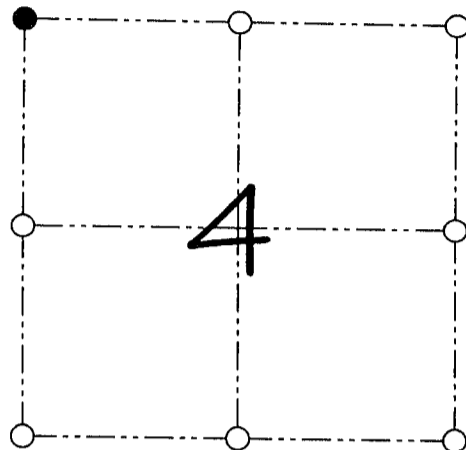
I, Larry L. Austin, do hereby certify that on the 11th day of November, 1995, I found evidence of the Northwest corner of Section 4, Town 3 North, Range 2 West, of the 4th Principal Meridian, and I re-established said corner according to the Wisconsin statutes as shown and described hereon.

Dated this 9th day of June, 2000

Larry L. Austin
Larry L. Austin S-1903



SEAL



● = CORNER LOCATION
NORTHWEST CORNER OF SECTION 4, T 3 N R 2 W TOWN OF HARRISON

HISTORY OF ORIGINAL CORNER ESTABLISHMENT:

Corner was originally set in 1833 by Robert Clark.
In 1855 Overton found the original corner.
No other record of the corner was found.

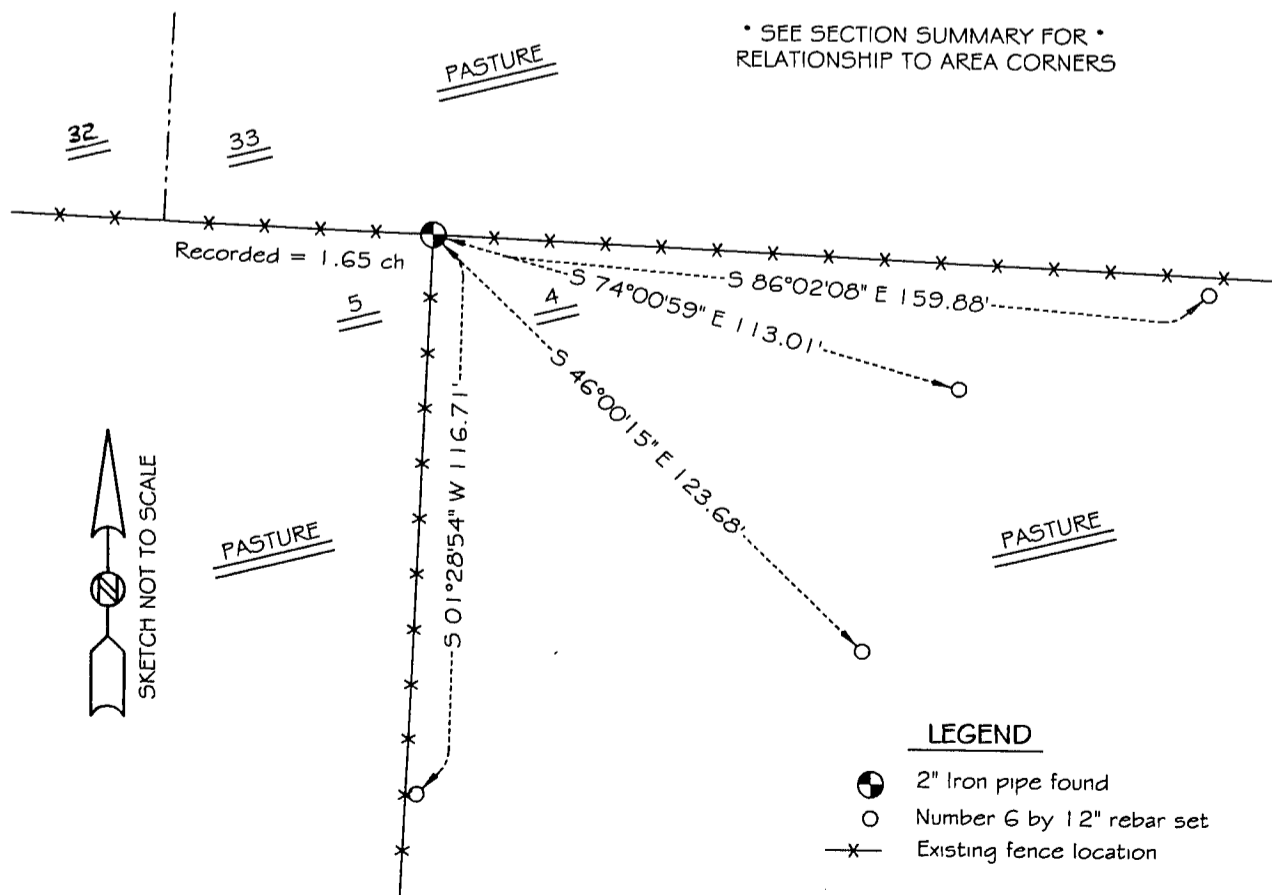
DESCRIPTION OF CORNER EVIDENCE FOUND:

I found an existing 2" iron pipe at this location. I accepted it's location as an occupied location. Verified it's location using E.D.M. methods.

DESCRIPTION OF CORNER AND WITNESS MONUMENTS, references and accessories used to perpetuate the original or re-established location of this corner

WITNESS TO THE CORNER LOCATION: BOBBY SEDGWICK

SKETCH:



LEGEND

- 2" Iron pipe found
- Number 6 by 12" rebar set
- x— Existing fence location