

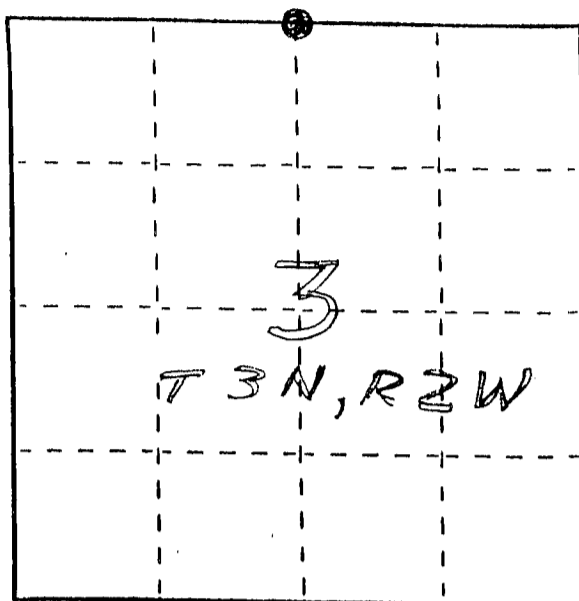
U. S. PUBLIC LAND SURVEY MONUMENT RECORD

INSTRUCTIONS: This record shall show the location of the corner and shall include all of the following nine elements (a through i).

(a) Identify the corner by reference to the U.S. public land survey system.

● = Corner monument restored.

N 1/4 COR., SEC. 3,
T3N, R2W, HARRISON
TWP., GRANT CO., WI

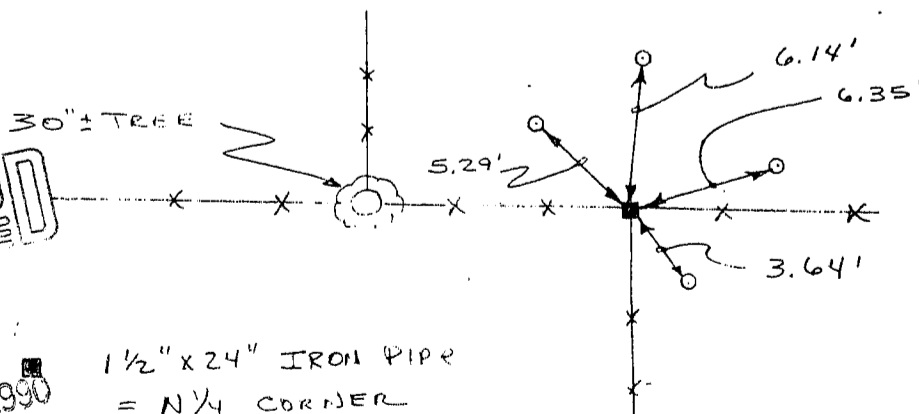


(b) Describe any record evidence, monument evidence, occupational evidence, testimonial evidence or any other material evidence you considered, and whether the monument was found or placed.

PLACED MONUMENT AT OCCUPIED CORNER
BASED ON ORAL TESTIMONY & VERIFIED BY EDM
TRAVERSE.

(c) In the plan view drawing below, provide reference ties to at least 4 witness monuments, or, if the location is within a municipality, to at least 2 witness monuments. (Witness monuments shall be made of concrete, natural stone, iron or other equally durable material, ~~except~~ wood.) Describe witness monuments.

(d) Show a plan view drawing depicting the relevant monuments and reference ties which is sufficient in detail to enable accurate relocation of the corner monument if the corner monument is disturbed. Indicate north.



No SCALE

GRANT COUNTY CLERK
RECEIVED

SEP 20 1990

1 1/2" x 24" IRON PIPE
= N 1/4 CORNER
SEC. 3

○ = 3/8" x 10" STEEL PEG
= TIE

—X—X— EXISTING FENCE

