

# GRANT COUNTY U.S. PUBLIC LAND SURVEY MONUMENT RECORD

INSTRUCTIONS: THIS RECORD SHALL SHOW THE LOCATION OF THE CORNER AND SHALL INCLUDE ALL OF THE FOLLOWING ELEMENTS (A THROUGH I).

(A) IDENTIFY THE CORNER AS REFERENCED TO THE U.S. PUBLIC LAND SURVEY SYSTEM

■ = CORNER MONUMENT RESTORED

WITNESSES TO CORNER LOCATION:

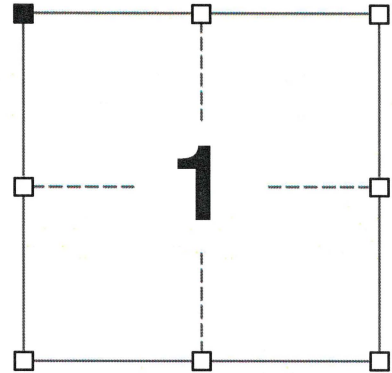
JAY P. ADAMS  
TYLER D. ATKINSON

GEOGRAPHIC COORDINATES,  
NAD 83 (2011) ADJUSTMENT:

LATITUDE: 42° 46' 09.28804"  
LONGITUDE: 90° 33' 52.93954"

WISCONSIN COORDINATE REFERENCE SYSTEM (WISCRS),  
GRANT COUNTY, NAD 83 (2011) ADJUSTMENT:

NORTHING: 495,035.419  
EASTING: 858,183.811



SECTION 1  
TOWNSHIP 3 NORTH, RANGE 2 WEST  
TOWN OF HARRISON

(B) DESCRIBE ANY RECORD EVIDENCE, MONUMENT EVIDENCE, OCCUPATIONAL EVIDENCE, TESTIMONIAL EVIDENCE OR ANY OTHER MATERIAL EVIDENCE YOU CONSIDERED, AND WHETHER THE MONUMENT WAS FOUND OR PLACED.

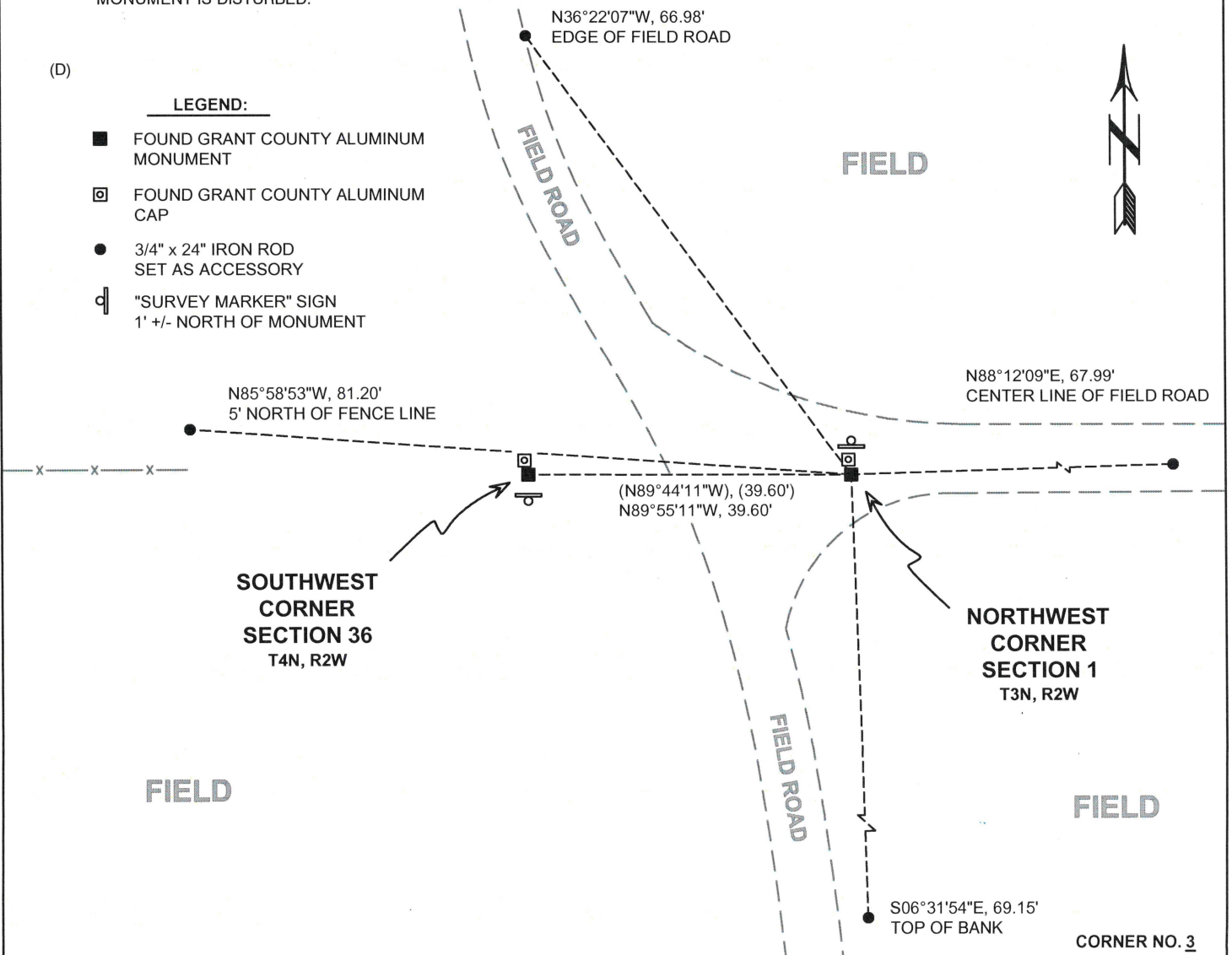
I COULD FIND NO MONUMENTS OR BEARING TREES FROM THE ORIGINAL GOVERNMENT SURVEY. I RECOVERED A 1.25" REBAR WITH A GRANT COUNTY ALUMINUM CAP AS WELL AS A GRANT COUNTY ALUMINUM MONUMENT IN CLOSE PROXIMITY TO EACH OTHER AT THIS CORNER. I ACCEPTED THE ALUMINUM MONUMENT AS IT WAS LIKELY TO BE THE FIRST MONUMENT UTILIZED TO REMONUMENT THE ORIGINAL GOVERNMENT CORNER AS IT IS BURIED DEEPER THAN THE 1.25" REBAR WITH ALUMINUM CAP. I ACCEPTED THIS LOCATION AS THE BEST AVAILABLE EVIDENCE OF THE ORIGINAL GOVERNMENT CORNER AND LEFT THE MONUMENT IN PLACE.

(C) IN THE PLAN VIEW DRAWING BELOW, PROVIDE REFERENCE TIES TO AT LEAST 4 WITNESS MONUMENTS. WITNESS MONUMENTS SHALL BE MADE OF CONCRETE, NATURAL STONE, IRON, BEARING TREES OR ANY OTHER EQUALLY DURABLE MATERIAL. DEPICT THE RELEVANT MONUMENTS AND REFERENCE TIES WITH SUFFICIENT DETAIL TO ENABLE ACCURATE RELOCATION OF THE CORNER IF THE CORNER MONUMENT IS DISTURBED.

(D)

**LEGEND:**

- FOUND GRANT COUNTY ALUMINUM MONUMENT
- FOUND GRANT COUNTY ALUMINUM CAP
- 3/4" x 24" IRON ROD SET AS ACCESSORY
- ⊕ "SURVEY MARKER" SIGN 1' +/- NORTH OF MONUMENT



32003

(E) DESCRIBE ANY MATERIAL DISCREPANCY BETWEEN THE LOCATION OF THE CORNER AS RESTORED OR REESTABLISHED AND THE LOCATION OF THAT CORNER AS PREVIOUSLY RESTORED OR REESTABLISHED BY DISTANCE AND DIRECTION. SHOW THE DISCREPANCY ON THE PLAN VIEW DRAWING UNDER (D), ABOVE. SHOW THE DISTANCES BETWEEN THE CORNER AS PREVIOUSLY RESTORED OR REESTABLISHED AND (1) THE CORNER AS RESTORED OR REESTABLISHED, AND (2) TO AT LEAST 2 OF THE WITNESS MONUMENTS SHOWN ON THE DRAWING IN (D) ABOVE.

I FOUND BOTH A 1.25" REBAR WITH GRANT COUNTY ALUMINUM CAP AS WELL AS A GRANT COUNTY ALUMINUM MONUMENT AT THIS CORNER. THIS PIN CUSHING SITUATION AND THE RELATIONSHIP OF THE DIFFERENT MONUMENTS ARE DEPICTED IN (D).

(F) WAS THE CORNER RESTORED THROUGH ACCEPTANCE OF (1) AN OBLITERATED EVIDENCE LOCATION, OR (2) A FOUND PERPETUATED LOCATION?

(2) A FOUND PERPETUATED LOCATION.

(G&H) WAS THE CORNER REESTABLISHED THROUGH LOST CORNER PROPORTIONATE METHODS? IF SO, SHOW THE METHOD, INCLUDING THE DIRECTIONS AND DISTANCES TO OTHER PUBLIC LAND SURVEY CORNERS USED AS EVIDENCE OR USED FOR PROPORTIONING IN DETERMINING THE CORNER LOCATION.

N/A

CORNER HISTORY

THE ORIGINAL GOVERNMENT CORNER WAS ESTABLISHED BY ROBERT CLARK JR. IN THE FIRST QUARTER OF 1833; CLARK SET A POST 60 LINKS EAST OF THE SOUTHWEST CORNER OF SECTION 36, T4N, R2W.

IN A CERTIFIED SURVEY MAP DATED 31 JULY 2000, LARRY AUSTIN REPORTED FINDING A GRANT COUNTY ALUMINUM MONUMENT AT THE CORNER.

IN A TIE SHEET DATED 22 SEPTEMBER 2000, LARRY AUSTIN REPORTED FINDING A COUNTY MONUMENT AT THE CORNER.



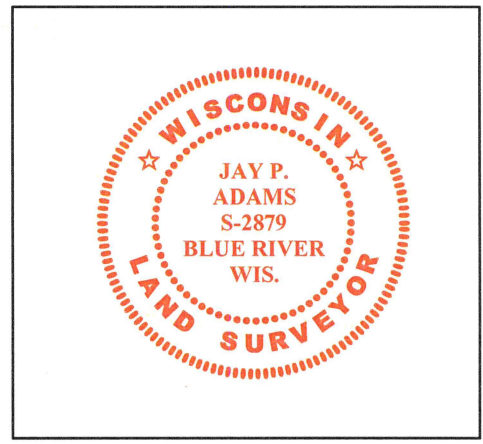
AFFIX LAND SURVEYOR SEAL

(I) I, JAY P. ADAMS, P.L.S. - 2879, CERTIFY THAT THE CORNER LOCATION SHOWN ON THIS RECORD WAS DETERMINED BY ME OR UNDER MY DIRECTION AND CONTROL AND THAT THIS U.S. PUBLIC LAND SURVEY MONUMENT RECORD IS CORRECT AND COMPLETE TO THE BEST OF MY KNOWLEDGE AND BELIEF.

SIGNATURE

17 FEBRUARY 2020

DATE



# GRANT COUNTY CERTIFIED LAND CORNER

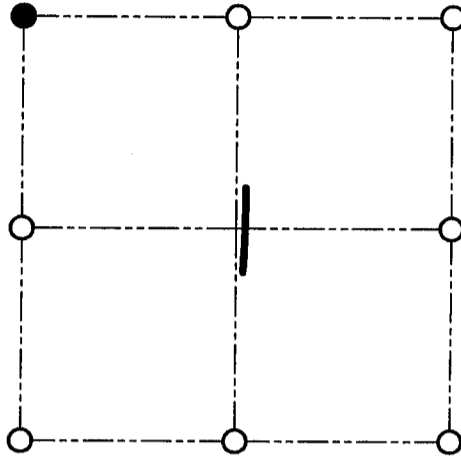
CORNER NUMBER 03

**CERTIFICATE:**

I, Larry L. Austin, do hereby certify that on the 3rd day of August, 2000, I found evidence of the Northwest corner of Section 1, Town 3 North, Range 2 West, of the 4th Principal Meridian, and I re-established said corner according to the Wisconsin statutes as shown and described hereon.

Dated this 22nd day of September, 2000

Larry L. Austin S-1903



● = CORNER LOCATION

NORTHWEST CORNER OF SECTION 1, T 3 N R 2 W TOWN OF HARRISON

**HISTORY OF ORIGINAL CORNER ESTABLISHMENT:**

Corner was originally set in 1832 by Robert Clark.  
No other record of the corner was found.

**DESCRIPTION OF CORNER EVIDENCE FOUND:**

I found an existing Aluminum monument at this location.  
I accepted it's location after an E.D.M. & G.P.S. traverse of the area.

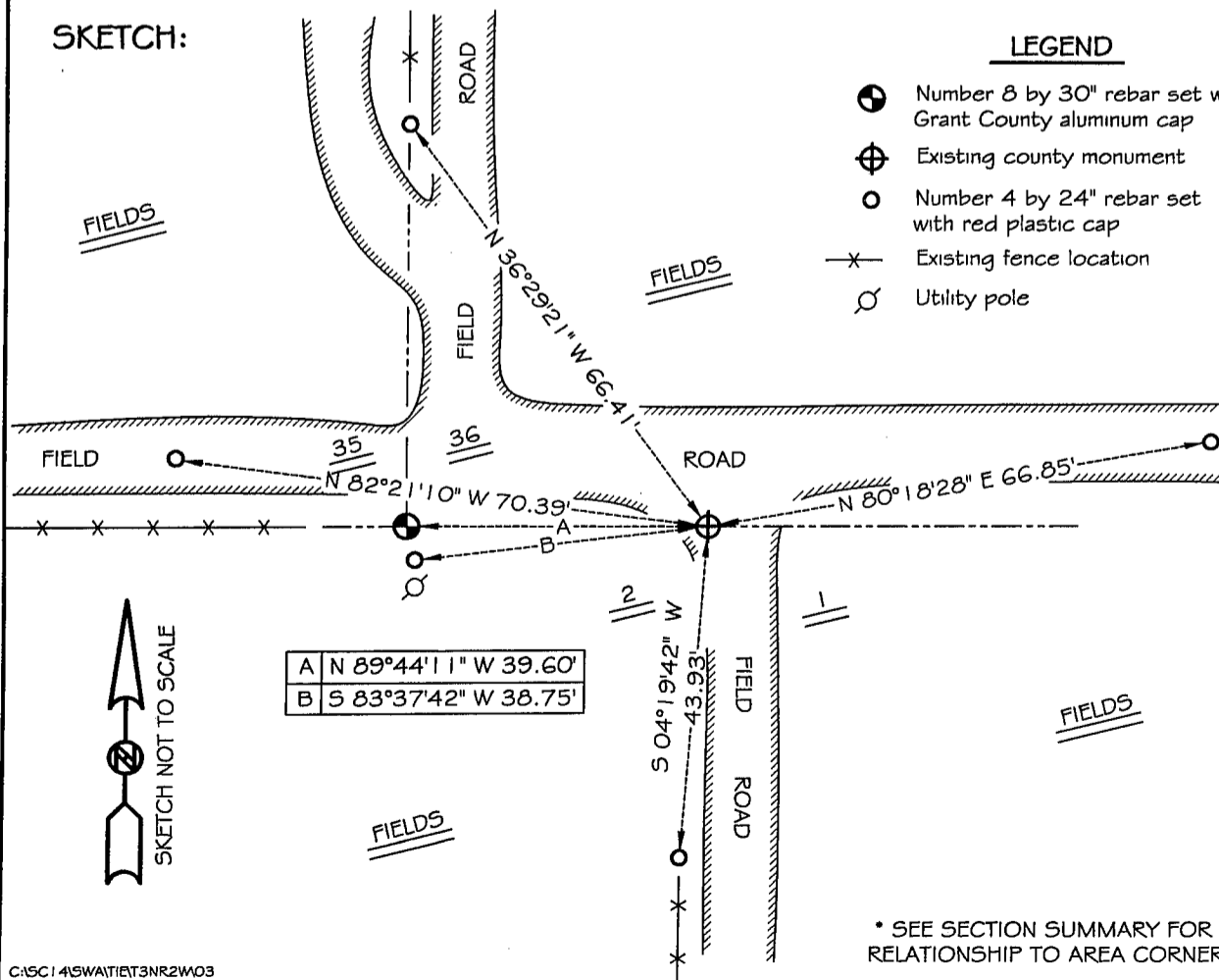
**DESCRIPTION OF CORNER AND WITNESS MONUMENTS, references and accessories used to perpetuate the original or re-established location of this corner**

WITNESS TO THE CORNER LOCATION: SHANE AUSTIN & JERRY SPEILMAN

**SKETCH:**

LEGEND

- ⊕ Number 8 by 30" rebar set with Grant County aluminum cap
- ⊕ Existing county monument
- Number 4 by 24" rebar set with red plastic cap
- x- Existing fence location
- ⊙ Utility pole



\* SEE SECTION SUMMARY FOR \*  
RELATIONSHIP TO AREA CORNERS