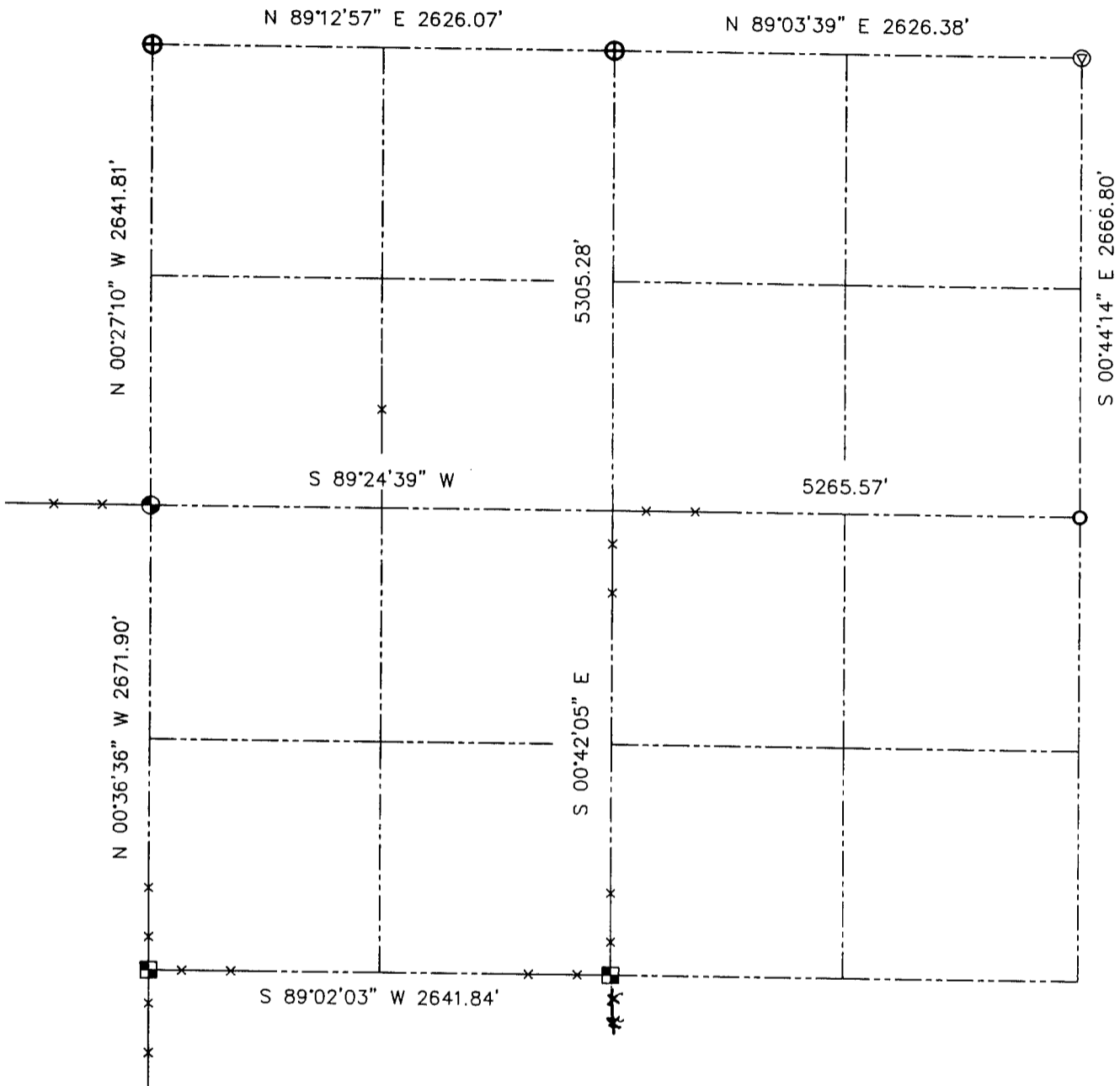


U.S. PUBLIC LAND SURVEY MONUMENT RECORD - GRANT COUNTY, WI
 Summary of Section 26, Town 3 North Range 1 West, Town of Platteville



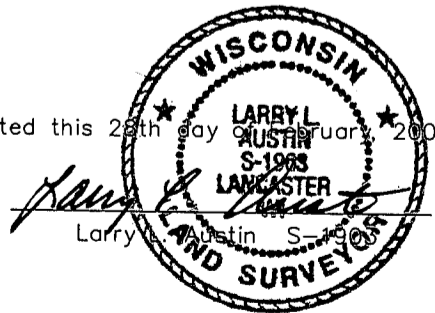
LEGEND

- ⊕ No. 6 rebar found with Grant County Aluminum Cap
- ⊗ No. 8 x 30" rebar set with Grant County Aluminum Cap - wt=2.67#/l.f.
- No. 7 rebar found
- Aluminum Monument found with Grant County Aluminum Cap
- ⊙ Railroad spike found
- x— Approximate location of existing fence



Relationship of all section corners to other section corners shall be shown hereon by bearing and distance or grid coordinates. Bearing reference shown below.

Dated this 28th day of February, 2002



Bearings referenced to the East-West Quarter of Section 26, which is assumed to bear S 89°24'39" W.

SKETCH NOT TO SCALE

AUSTIN ENGINEERING, LLC
 4211 HWY 81 EAST, LANCASTER, WI 53813
 PHONE 608-723-6363 FAX 608-723-6702

FIELDBOOK: SDR33, 2114
 G: \T3NR1W\23
 C: \SWA\TIE\T3NR1W\26SUM

CREW: BS-SB-SA-BD
 DRAWN BY: SW AUSTIN
 APPROVED: LL AUSTIN