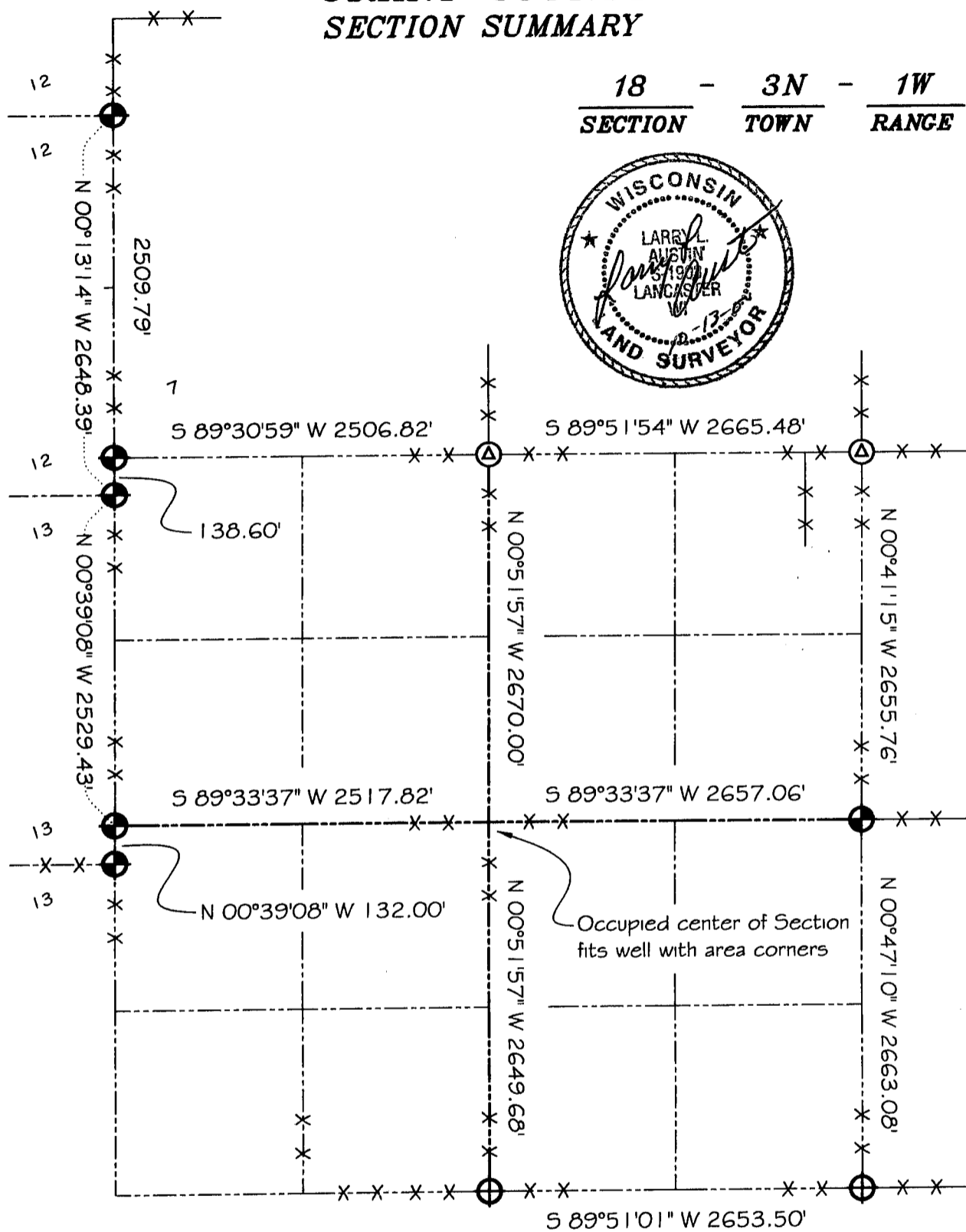


GRANT COUNTY SECTION SUMMARY

18 - 3N - 1W
 SECTION TOWN RANGE



LEGEND

- NO. 8 X 30" REBAR SET WITH GRANT COUNTY ALUMINUM CAP
- EXISTING ALUMINUM MONUMENT
- EXISTING 1" IRON PIPE

NOTE:

Relationships of all section corners to other section corners shall be shown hereon by bearing and distance or grid coordinates
 Show or describe bearing reference



BEARINGS REFERENCED TO THE EAST-WEST QUARTER LINE OF SECTION 18, WHICH IS ASSUMED TO BEAR S 89°33'37" W.