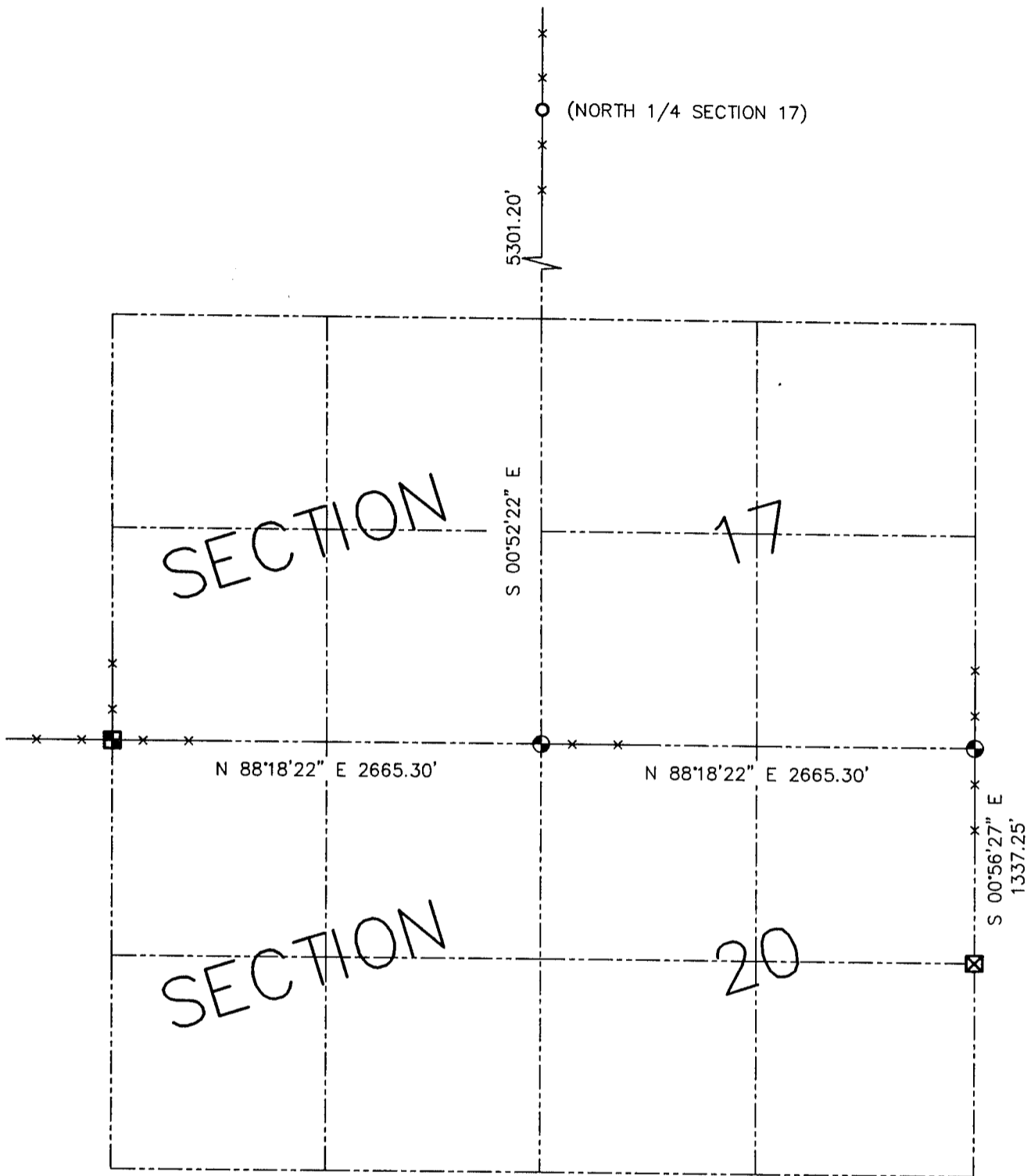


U.S. PUBLIC LAND SURVEY MONUMENT RECORD - GRANT COUNTY, WI
 Summary of Section 17, Town 3 North Range 1 West, Town of Platteville



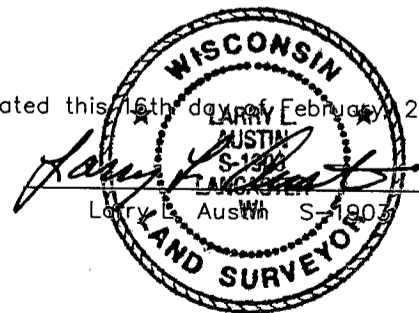
LEGEND

- ⊙ No. 8 x 30" rebar set with Grant County Aluminum Cap - wt=2.67#/l.f.
- No. 6 rebar found
- ⊠ Grant county aluminum monument found
- ⊕ No. 8 rebar found with Grant County Aluminum Cap
- ⊠ Stone monument found



Relationship of all section corners to other section corners shall be shown hereon by bearing and distance or grid coordinates. Bearing reference shown below.

Dated this 16th day of February, 2002



Bearings referenced to the North-South Quarter line Section 17, which is assumed to bear S 00°52'22" E.

SKETCH NOT TO SCALE

AUSTIN ENGINEERING, LLC

4211 HWY 81 EAST, LANCASTER, WI 53813
 PHONE 608-723-6363 FAX 608-723-6702

FIELDBOOK: SDR33, 2114
 G: \T3NR1W\21DOT
 C: \SWA\TIE\T3NR1W\17&20SUM

CREW: BS-SB-BD
 DRAWN BY: SW AUSTIN
 APPROVED: LL AUSTIN