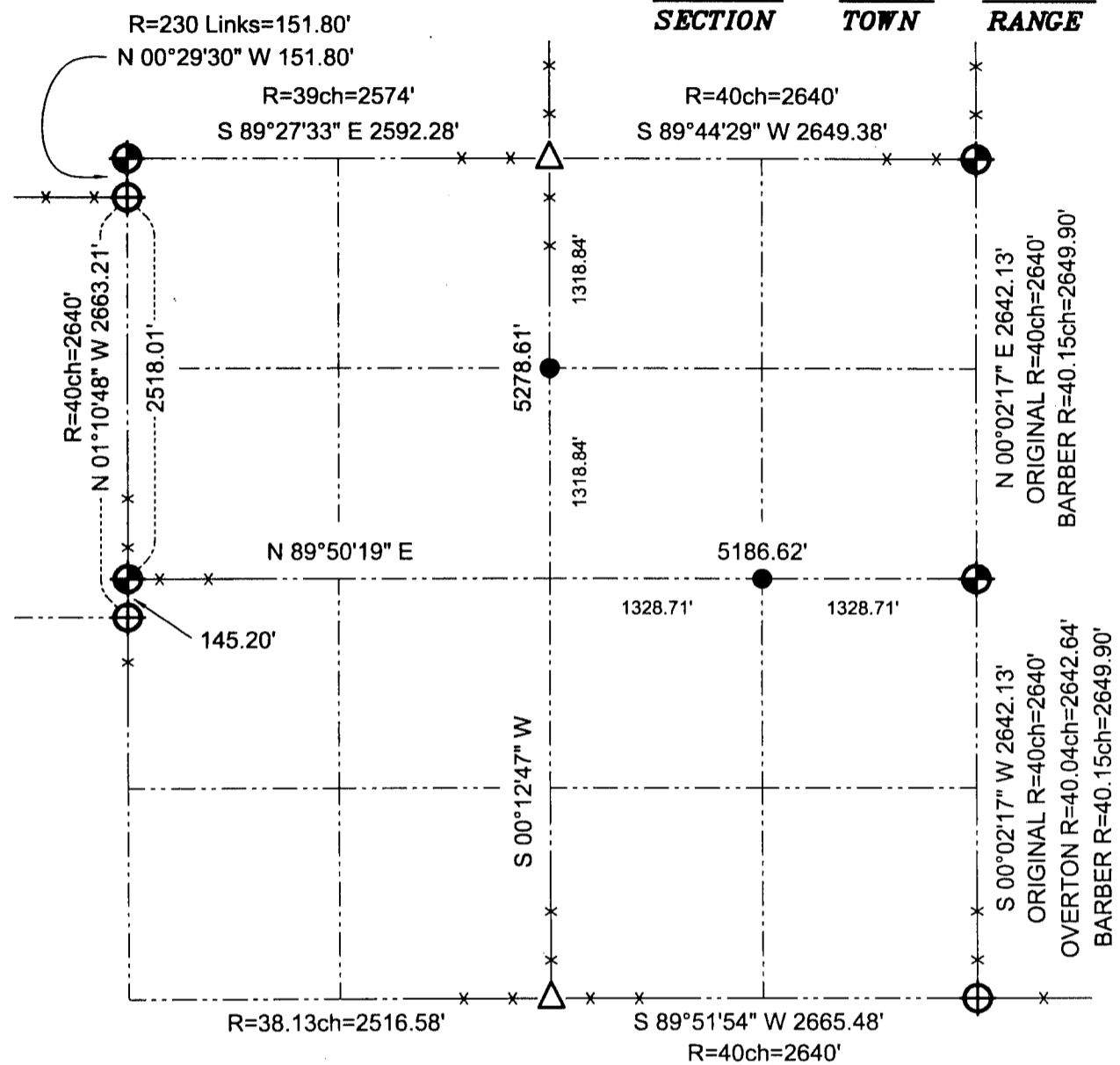


#STAN

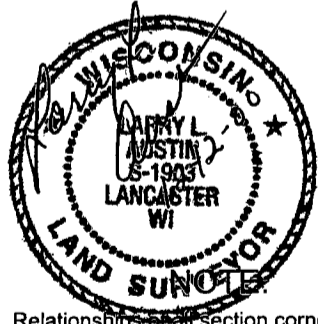
GRANT COUNTY SECTION SUMMARY

7 - 3N - 1W
SECTION TOWN RANGE



LEGEND

- Number 8 x 30" rebar set with Grant County Aluminum Cap
- Number 8 rebar found with Grant County Aluminum Cap
- 1" Iron pipe found
- Number 6 x 24" rebar set with yellow plastic survey cap
- Appx existing fence
- R=** Recorded as



Relationships of all section corners to other section corners shall be shown hereon by bearing and distance or grid coordinates.
~Bearing reference below~



Bearings referenced to the North-South Quarter line of Section 7, which is assumed to bear S 00°12'47" W.

AUSTIN ENGINEERING, LLC
4211 HWY 81 E, LANCASTER, WI 53813
PHONE 608-723-6363 FAX 608-723-6702

FIELDBOOK: SDR33, 2001
G:\T3NR1W\18
C:\SC14\SWA\TIE\T3NR1W\07SUM

DRAWN BY: SW AUSTIN
APPROVED: LL AUSTIN
CREW: BS - SB - SA - TF

JUN 14 2001