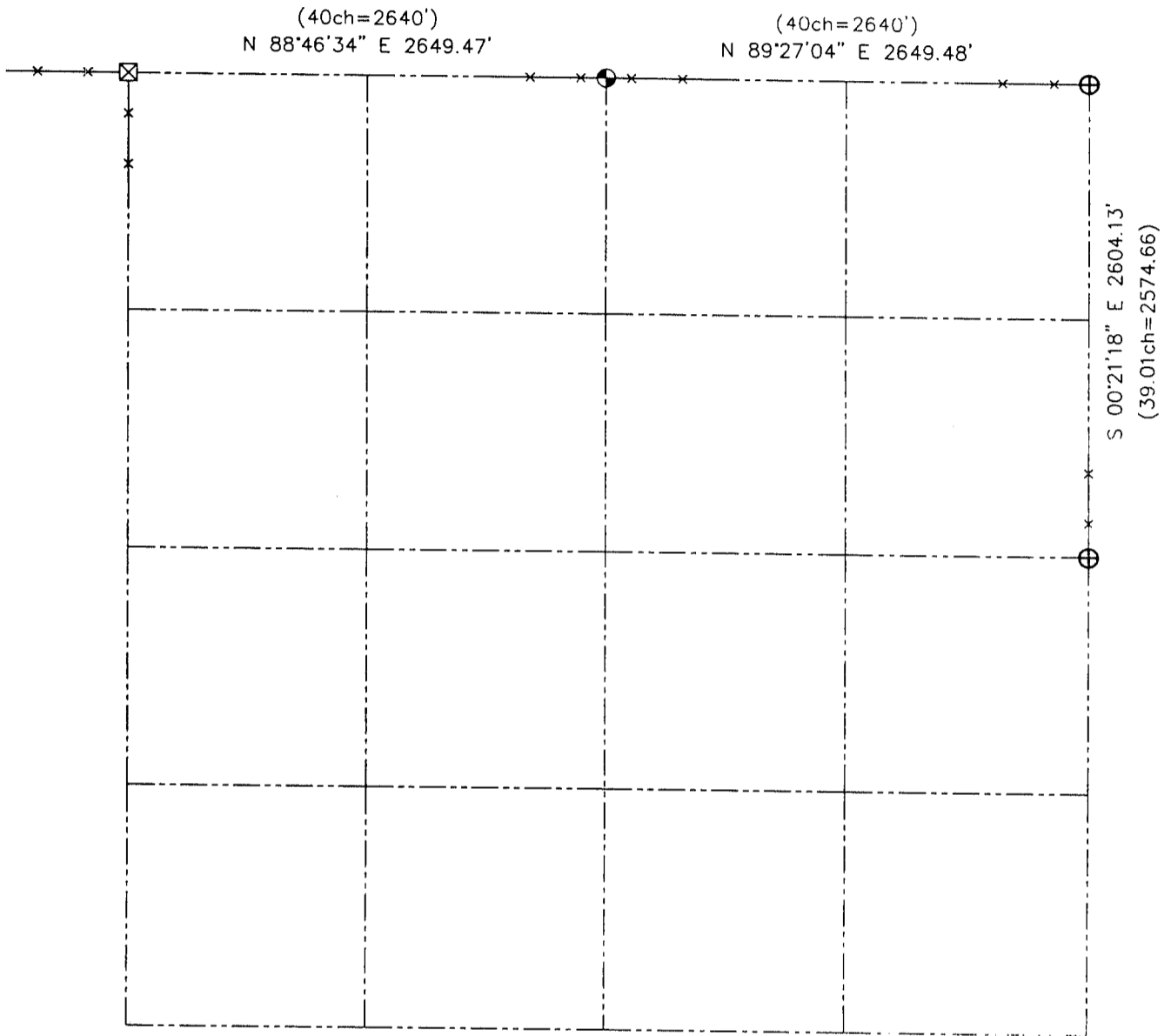


**U.S. PUBLIC LAND SURVEY MONUMENT RECORD – GRANT COUNTY, WI**  
**Summary of Section 02, Town 3 North, Range 1 West, Town of Platteville**



**LEGEND**

- ⊕ No. 8 rebar found with Grant County Aluminum Cap
- ⊙ No. 8 x 30" rebar set with Grant County Aluminum Cap - wt=2.67#/l.f.
- < > Recorded as
- x— Approximate location of existing fence
- ⊠ Stone monument found



Relationship of all section corners to other section corners shall be shown hereon by bearing and distance or grid coordinates. Bearing reference shown below.



Dated this 16th day of April, 2002

Larry L. Austin, S-1903

Bearings referenced to the North line of the Northwest Quarter of Section 02, which is assumed to bear N 89°27'04" E.

SKETCH NOT TO SCALE

Austin Engineering, LLC  
 4211 HWY 81 EAST, LANCASTER, WI 53813  
 PHONE 608-723-6363 FAX 608-723-6702

FIELDBOOK: SDR33, 2112  
 G: \T3NR1W\01  
 C: \SWA\TIE\T3NR1W\02SUM

CREW: BS-SB-SA-BD  
 DRAWN BY: SW AUSTIN  
 APPROVED: LL AUSTIN