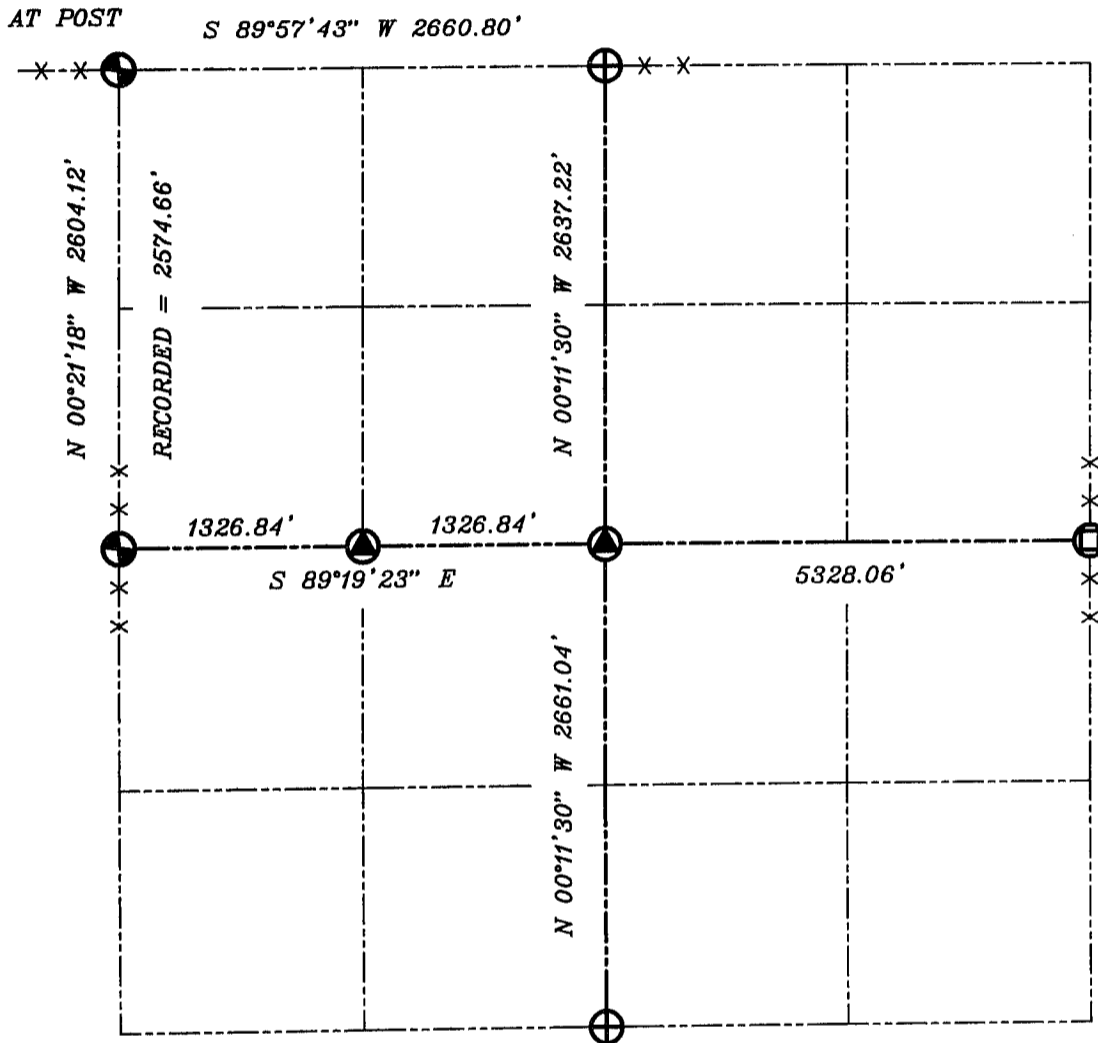






GRANT COUNTY SECTION SUMMARY

1 - 3N - 1W
SECTION TOWN RANGE



LEGEND

-  NO. 8 X 30" REBAR SET WITH GRANT COUNTY ALUMINUM CAP
-  EXISTING NO. 6 REBAR
-  NO. 6 X 24" REBAR SET WITH WITH YELLOW PLASTIC CAP
-  LAFAYETTE COUNTY MONUMENT FOUND

NOTE:

Relationships of all section corners to other section corners shall be shown hereon by bearing and distance or grid coordinates
Show or describe bearing reference



BEARINGS REFERENCED TO THE EAST-WEST 1/4 LINE OF SECTION 1, WHICH IS ASSUMED TO BEAR S 89°19'23" E.